

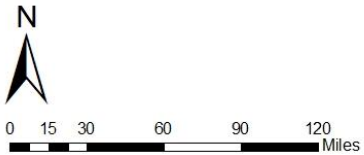
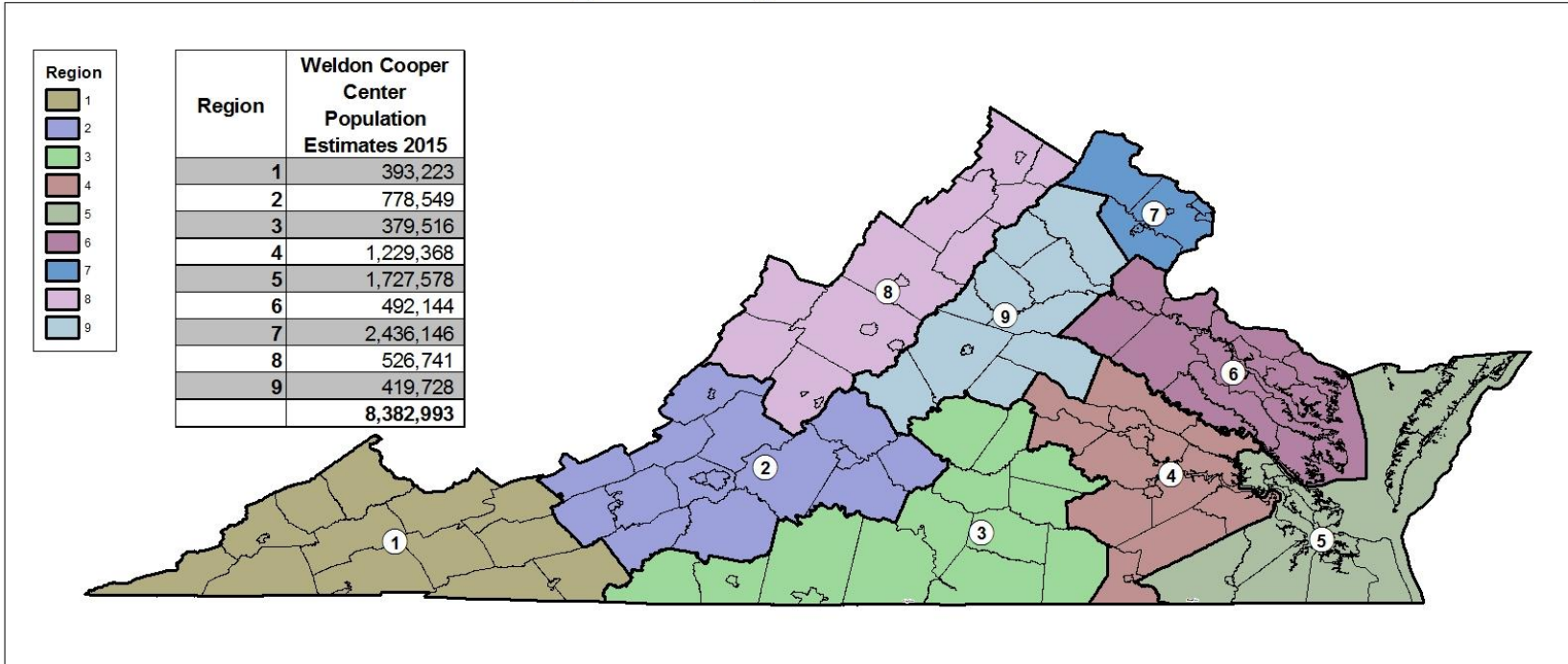


VIRGINIA INITIATIVE FOR  
**GROWTH &  
OPPORTUNITY**  
IN EACH REGION

**REGIONAL BASELINE MEASURES**  
*REGION 1*



# GO Virginia Regional Boundaries



Source: US Census, VA PDC



12/5/2016



VIRGINIA INITIATIVE FOR  
**GROWTH &  
OPPORTUNITY**  
IN EACH REGION

# Region 1

Counties of:

- Bland, Buchanan, Carroll, Dickenson, Grayson, Lee, Russell, Scott, Smyth, Tazewell, Washington, Wise, Wythe

Cities of:

- Bristol, Galax, Norton



VIRGINIA INITIATIVE FOR  
**GROWTH &  
OPPORTUNITY**  
IN EACH REGION

# Data Included

- **Population**
  - Population Trends
- **Income and Wealth**
  - Per Capita Income
  - Percent of Population in Poverty
- **Employment**
  - Total Employment
  - Unemployment Rate
- **Industry**
  - Employment Trends by Industry Sector
  - Relative Concentration (Location Quotients) by Sector
  - Wages by Industry Sector



VIRGINIA INITIATIVE FOR  
**GROWTH &  
OPPORTUNITY**  
IN EACH REGION

# Data Included

- **Labor Force**
  - Labor Force Participation Rate
  - Commuting inflow/outflow
  - Educational Attainment
- **Firm Growth**
  - Jobs Created by Young Companies (5 years old or less)
  - Jobs Created by Small Companies (less than 20 employees)
  - Sole Proprietorships



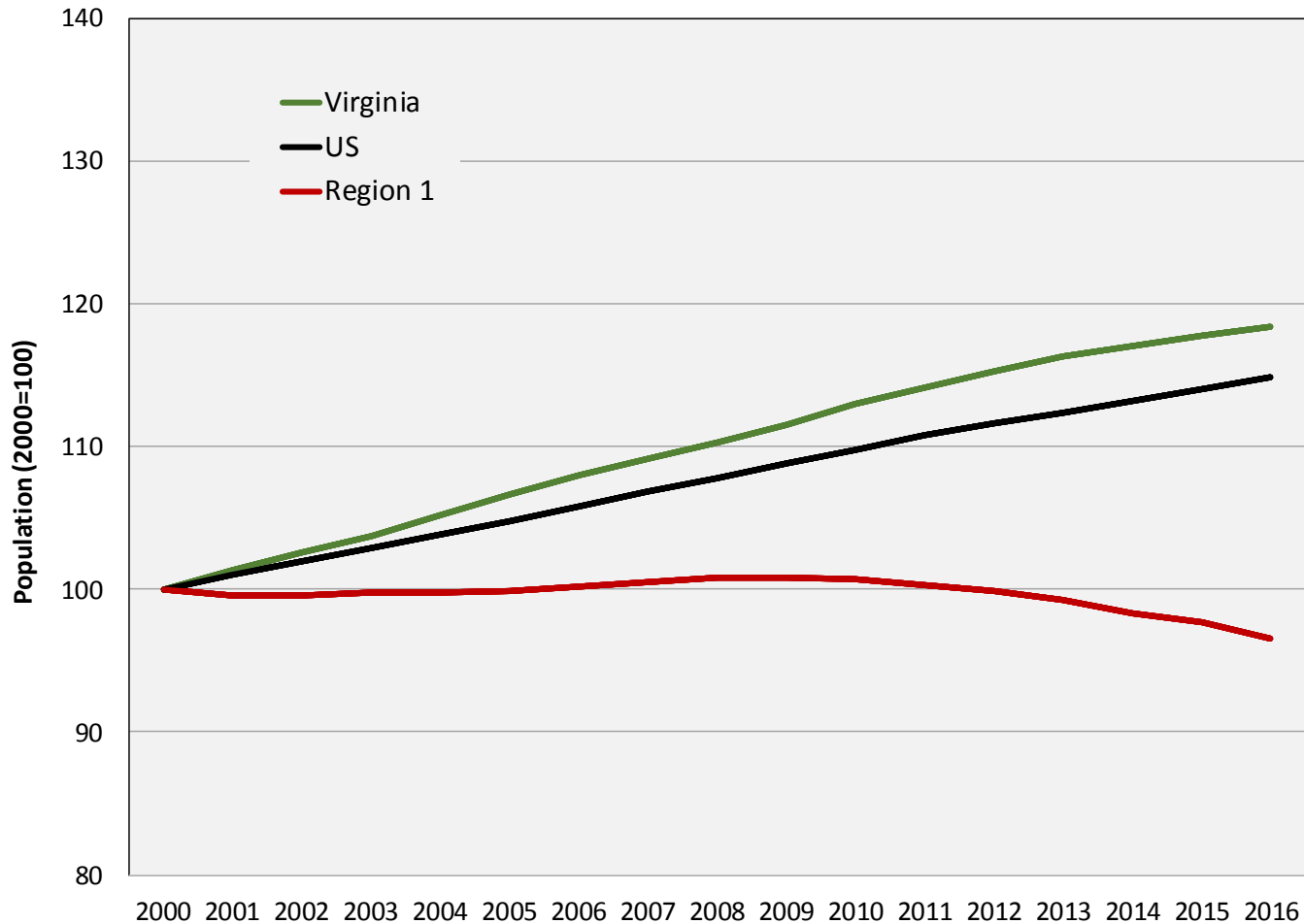
VIRGINIA INITIATIVE FOR  
**GROWTH &  
OPPORTUNITY**  
IN EACH REGION

# Population



VIRGINIA INITIATIVE FOR  
**GROWTH &  
OPPORTUNITY**  
IN EACH REGION

# Population Trends



Source: US Census Bureau, Population Estimates Programs



# Population Trends

## Population Trends: Region 1

	2000	2010	2016	Annual Growth (00-10)	Annual Growth (10-16)
<b>United States</b>	<b>281,424,600</b>	<b>308,745,538</b>	<b>323,127,513</b>	<b>0.9%</b>	<b>0.8%</b>
<b>Virginia</b>	<b>7,105,817</b>	<b>8,025,773</b>	<b>8,411,808</b>	<b>1.2%</b>	<b>0.8%</b>
<b>Region 1</b>	<b>398,740</b>	<b>401,712</b>	<b>385,045</b>	<b>0.1%</b>	<b>-0.7%</b>
Bland	6,833	6,811	6,513	0.0%	-0.7%
Buchanan	26,838	24,041	22,178	-1.1%	-1.3%
Carroll	29,264	30,066	29,531	0.3%	-0.3%
Dickenson	16,322	15,870	14,968	-0.3%	-1.0%
Grayson	16,782	15,499	15,107	-0.8%	-0.4%
Lee	23,548	25,530	24,179	0.8%	-0.9%
Russell	29,251	28,856	27,370	-0.1%	-0.9%
Scott	23,351	23,131	21,930	-0.1%	-0.9%
Smyth	33,079	32,187	31,062	-0.3%	-0.6%
Tazewell	44,418	45,147	42,150	0.2%	-1.1%
Washington	51,230	54,891	54,214	0.7%	-0.2%
Wise	42,077	41,617	39,228	-0.1%	-1.0%
Wythe	27,621	29,226	29,016	0.6%	-0.1%
Bristol city	17,289	17,852	16,960	0.3%	-0.9%
Galax city	6,921	7,020	6,775	0.1%	-0.6%
Norton city	3,916	3,968	3,864	0.1%	-0.4%

Source: US Census Bureau, Population Estimates Programs





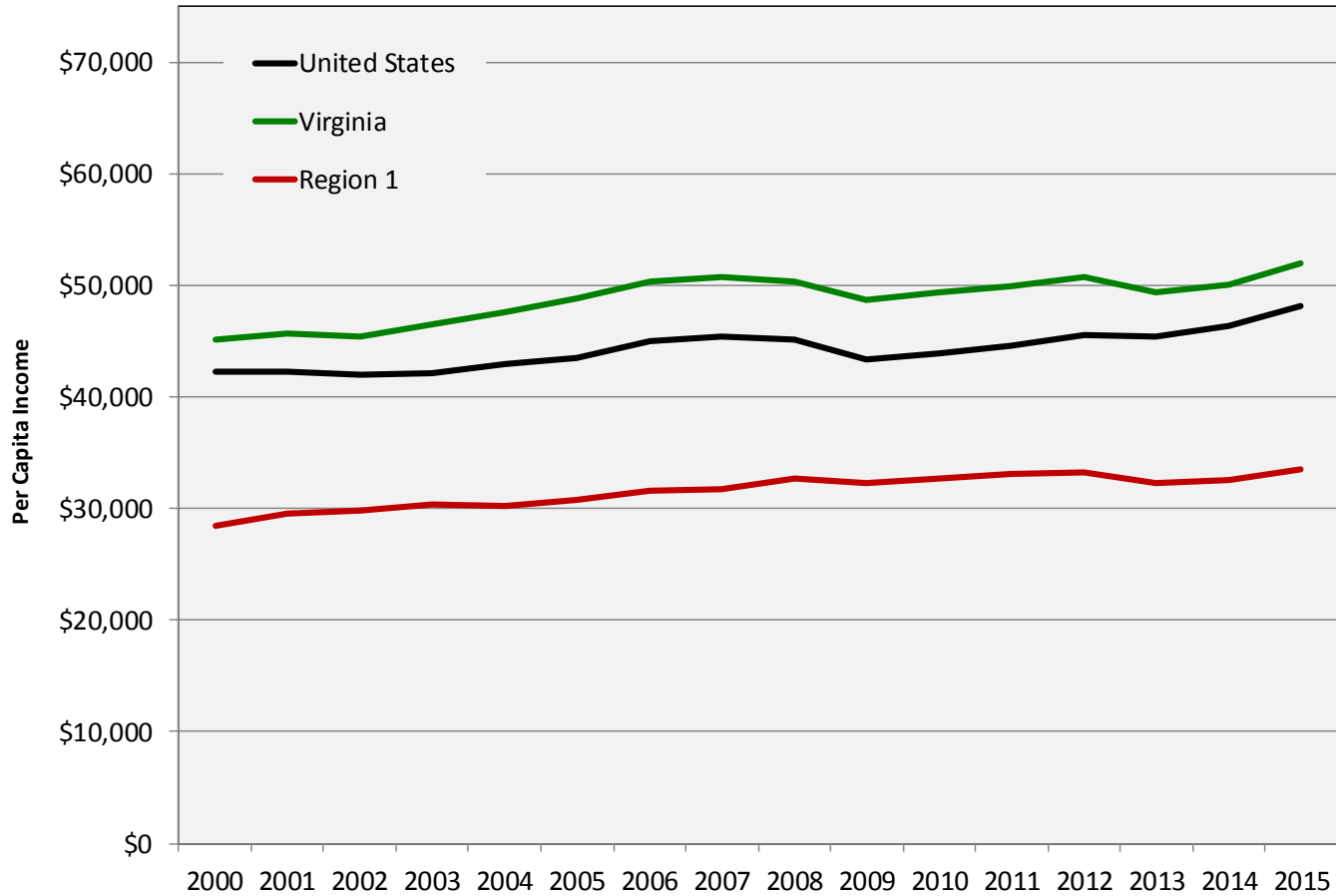
VIRGINIA INITIATIVE FOR  
**GROWTH &  
OPPORTUNITY**  
IN EACH REGION

# Income and Wealth



VIRGINIA INITIATIVE FOR  
**GROWTH &  
OPPORTUNITY**  
IN EACH REGION

# Per Capita Income



Source: US Bureau of Economic Analysis, PCI adjusted for 2015 dollars



# Per Capita Income

## Per Capita Income: Region 1

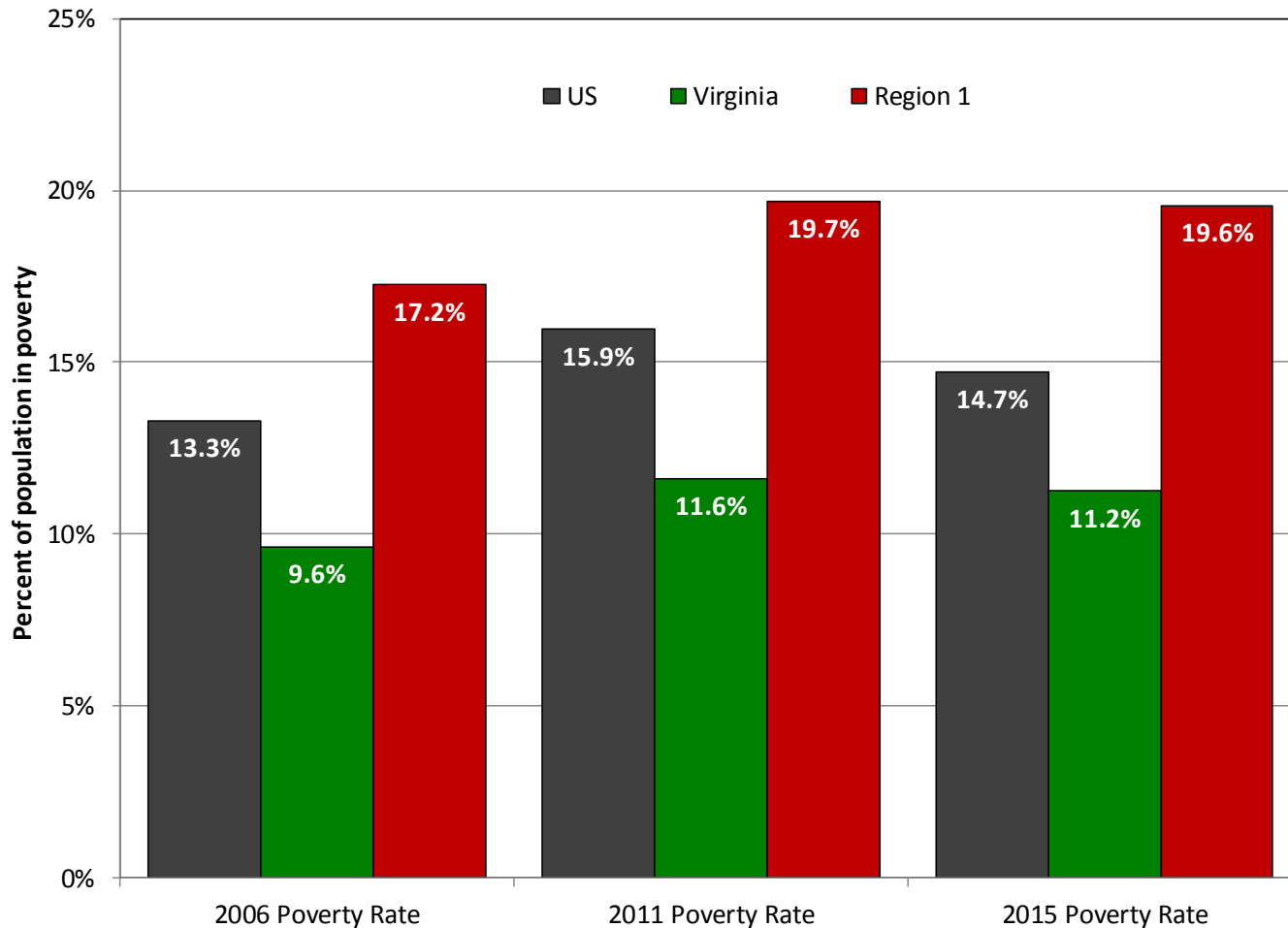
	2000	2010	2015	Annual Growth (00-10)	Annual Growth (10-15)
<b>United States</b>	<b>\$42,231</b>	<b>\$43,902</b>	<b>\$48,112</b>	<b>0.4%</b>	<b>1.5%</b>
<b>Virginia</b>	<b>\$45,144</b>	<b>\$49,421</b>	<b>\$52,052</b>	<b>0.9%</b>	<b>0.9%</b>
<b>Region 1</b>	<b>\$28,453</b>	<b>\$32,637</b>	<b>\$33,475</b>	<b>1.4%</b>	<b>0.4%</b>
Bland	\$25,405	\$30,344	\$32,752	1.8%	1.3%
Buchanan	\$28,196	\$32,699	\$32,032	1.5%	-0.3%
Carroll + Galax, VA*	\$28,816	\$30,885	\$32,642	0.7%	0.9%
Dickenson	\$24,261	\$31,048	\$28,443	2.5%	-1.4%
Grayson	\$26,492	\$29,609	\$29,627	1.1%	0.0%
Lee	\$25,271	\$28,311	\$27,219	1.1%	-0.7%
Russell	\$26,513	\$31,840	\$32,047	1.8%	0.1%
Scott	\$25,605	\$29,338	\$30,767	1.4%	0.8%
Smyth	\$28,490	\$30,603	\$34,090	0.7%	1.8%
Tazewell	\$28,905	\$34,150	\$34,121	1.7%	0.0%
Washington + Bristol, VA*	\$33,702	\$37,603	\$40,787	1.1%	1.4%
Wise + Norton, VA*	\$26,622	\$32,697	\$29,829	2.1%	-1.5%
Wythe	\$29,082	\$32,434	\$35,120	1.1%	1.3%

Source: US Bureau of Economic Analysis, PCI adjusted for 2015 dollars



VIRGINIA INITIATIVE FOR  
**GROWTH &  
OPPORTUNITY**  
IN EACH REGION

# Percent of Population in Poverty



Source: US Census Bureau, Small Area Income and Poverty Estimates



# Percent of Population in Poverty

## Poverty Trends: Region 1

	2006 Poverty Rate	2011 Poverty Rate	2015 Poverty Rate
<b>United States</b>	<b>13.3%</b>	<b>15.9%</b>	<b>14.7%</b>
<b>Virginia</b>	<b>9.6%</b>	<b>11.6%</b>	<b>11.2%</b>
<b>Region 1</b>	<b>17.2%</b>	<b>19.7%</b>	<b>19.6%</b>
Bland	13.0%	14.4%	13.6%
Buchanan	22.9%	24.3%	28.8%
Carroll	13.9%	19.9%	15.0%
Dickenson	19.2%	21.8%	25.0%
Grayson	15.9%	18.6%	20.1%
Lee	22.4%	27.6%	25.9%
Russell	17.4%	23.5%	21.2%
Scott	17.7%	18.7%	19.2%
Smyth	15.5%	19.4%	18.1%
Tazewell	16.5%	17.6%	17.2%
Washington	12.9%	12.8%	16.3%
Wise	20.1%	22.8%	22.7%
Wythe	14.6%	14.3%	14.4%
Bristol city	21.4%	25.8%	19.3%
Galax city	23.0%	22.9%	24.2%
Norton city	20.3%	20.5%	23.7%

Source: US Census Bureau, Small Area Income and Poverty Estimates



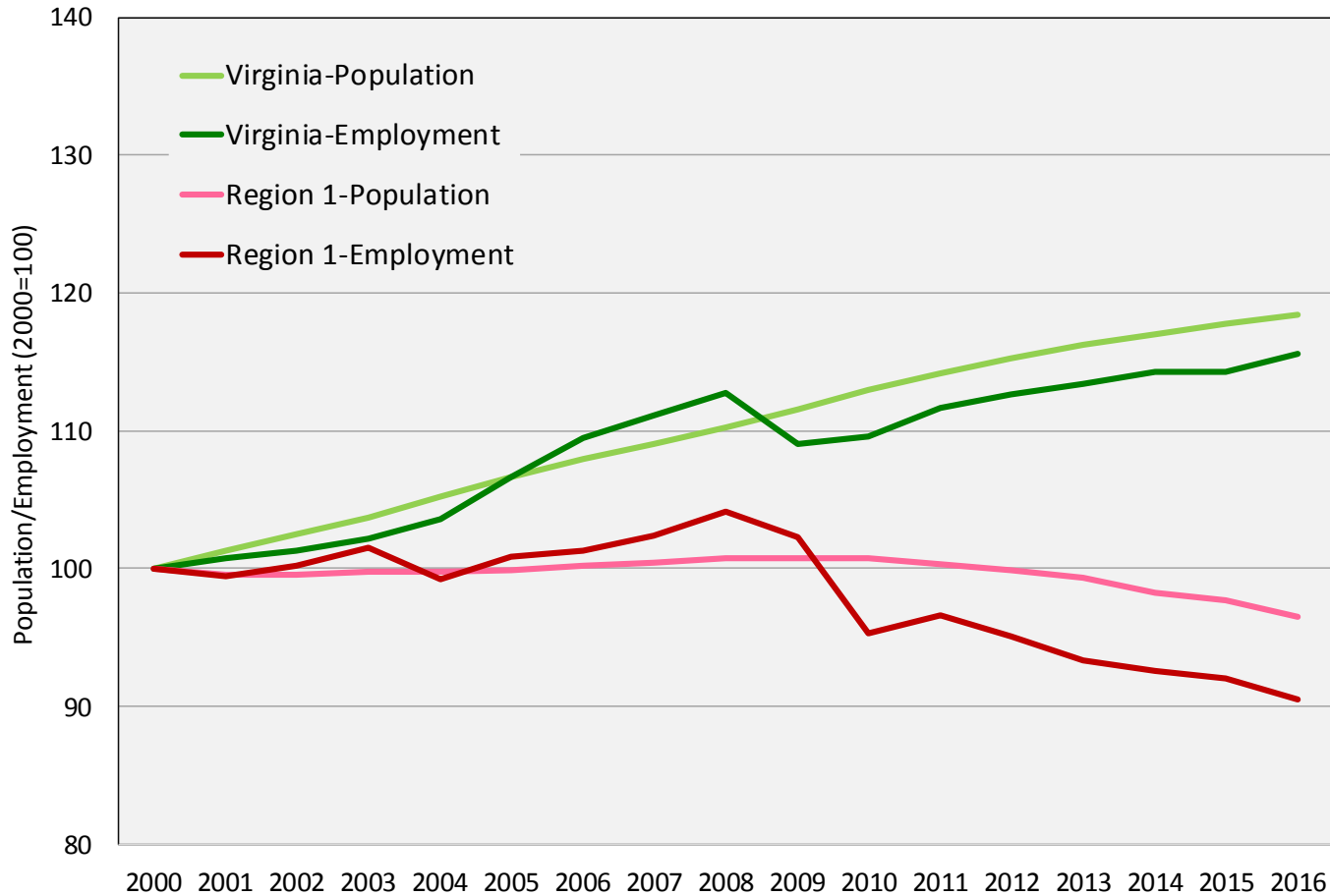
VIRGINIA INITIATIVE FOR  
**GROWTH &  
OPPORTUNITY**  
IN EACH REGION

# Employment



VIRGINIA INITIATIVE FOR  
**GROWTH &  
OPPORTUNITY**  
IN EACH REGION

# Total Employment



Source: US Census Bureau Population Estimates, US Bureau of Labor Statistics Local Area Unemployment Statistics (2016 preliminary)



# Total Employment

## Employment Trends: Region 1

	2000	2010	2016	Annual Growth (00-10)	Annual Growth (10-16)
<b>United States</b>	<b>136,891,000</b>	<b>139,064,000</b>	<b>151,436,000</b>	<b>0.2%</b>	<b>1.4%</b>
<b>Virginia</b>	<b>3,522,865</b>	<b>3,860,386</b>	<b>4,070,260</b>	<b>0.9%</b>	<b>0.9%</b>
<b>Region 1</b>	<b>165,380</b>	<b>157,649</b>	<b>149,694</b>	<b>-0.5%</b>	<b>-0.9%</b>
Bland	2,779	2,646	2,616	-0.5%	-0.2%
Buchanan	8,223	7,497	6,228	-0.9%	-3.0%
Carroll	14,215	12,390	12,364	-1.4%	0.0%
Dickenson	5,052	4,934	4,226	-0.2%	-2.5%
Grayson	7,678	6,455	6,592	-1.7%	0.4%
Lee	8,456	9,325	7,905	1.0%	-2.7%
Russell	11,248	10,844	10,573	-0.4%	-0.4%
Scott	9,394	9,219	9,135	-0.2%	-0.2%
Smyth	15,171	12,046	12,911	-2.3%	1.2%
Tazewell	18,022	16,779	14,874	-0.7%	-2.0%
Washington	24,240	25,239	25,835	0.4%	0.4%
Wise	15,467	15,561	12,121	0.1%	-4.1%
Wythe	13,546	12,687	12,828	-0.7%	0.2%
Bristol city	7,273	7,274	7,153	0.0%	-0.3%
Galax city	3,189	2,825	2,774	-1.2%	-0.3%
Norton city	1,427	1,928	1,559	3.1%	-3.5%

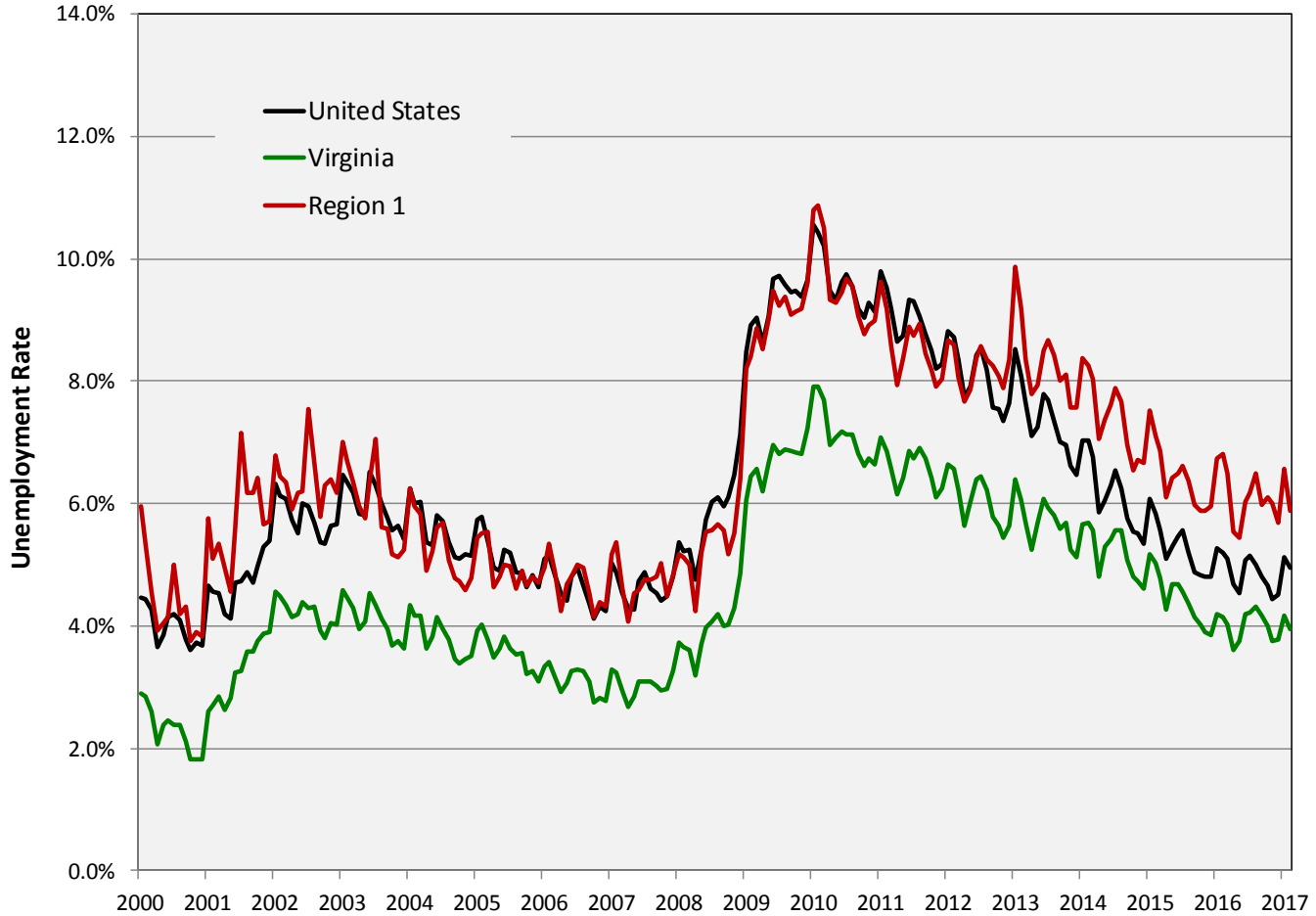
Source: US Census Bureau Population Estimates, US BLS Local Area Unemployment Statistics (2016 preli)





VIRGINIA INITIATIVE FOR  
**GROWTH &  
OPPORTUNITY**  
IN EACH REGION

# Unemployment Rate



Source: US Bureau of Labor Statistics, Local Area Unemployment Statistics



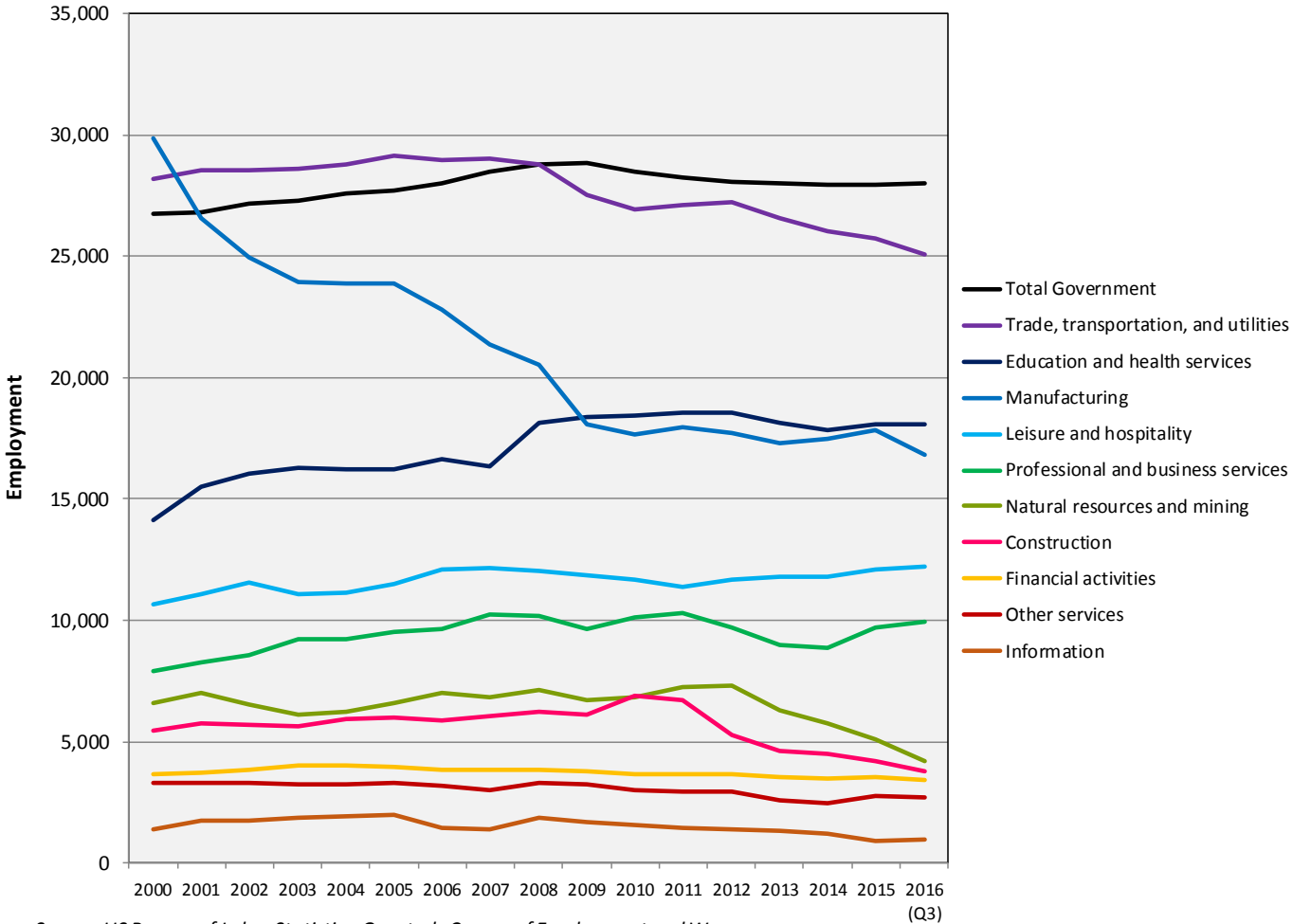
VIRGINIA INITIATIVE FOR  
**GROWTH &  
OPPORTUNITY**  
IN EACH REGION

# Industry



VIRGINIA INITIATIVE FOR  
**GROWTH &  
 OPPORTUNITY**  
 IN EACH REGION

# Employment Trends by Industry Sector



Source: US Bureau of Labor Statistics, Quarterly Census of Employment and Wages



# Employment Trends by Industry Sector

## Region 1: Industry Sectors, 2015\*

Sector	Employment#	LQ	Region 1 Avg Wage	US Avg Wage
Trade, transportation, and utilities	25,731	1.04	\$28,125	\$44,321
Local government	18,941	1.47	\$31,280	\$47,573
Education and health services	18,088	0.93	\$36,628	\$47,383
Manufacturing	17,859	1.57	\$42,236	\$64,305
Leisure and hospitality	12,109	0.87	\$14,242	\$21,807
Professional and business services	9,718	0.53	\$40,762	\$69,270
State government	7,577	1.79	\$37,777	\$55,878
Natural resources and mining	5,109	2.76	\$64,625	\$58,461
Construction	4,213	0.71	\$38,412	\$57,009
Financial activities	3,530	0.49	\$38,101	\$87,915
Other services	2,771	0.69	\$30,665	\$35,116
Federal government	1,450	0.57	\$57,494	\$77,900
Information	918	0.36	\$43,195	\$95,098

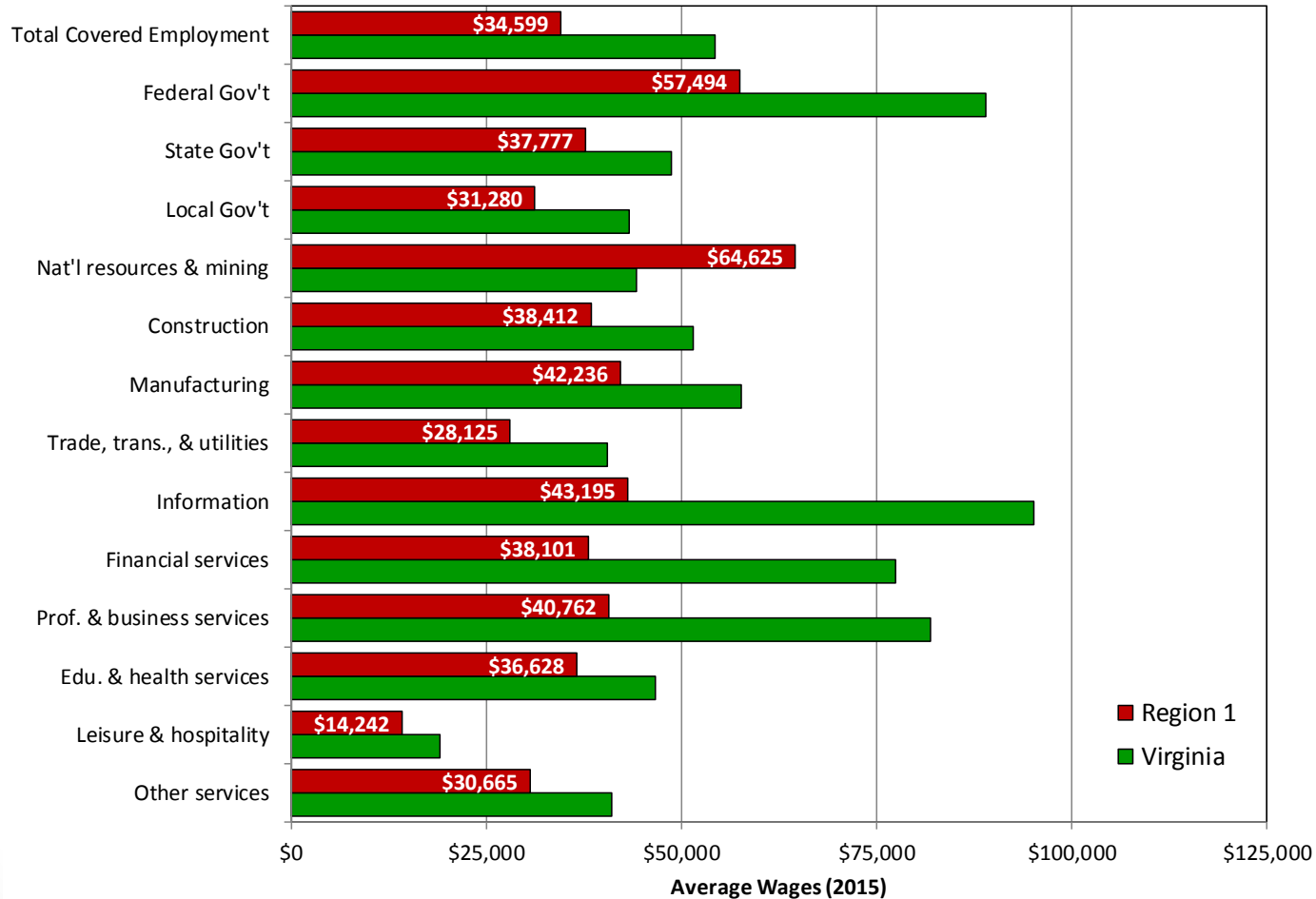
Source: US Bureau of Labor Statistics, Quarterly Census of Employment and Wages

\*2015 is the most recently available complete year

#Does not include suppressed employment



# Industry Wages by Sector



Source: US Bureau of Labor Statistics, Quarterly Census of Employment and Wages



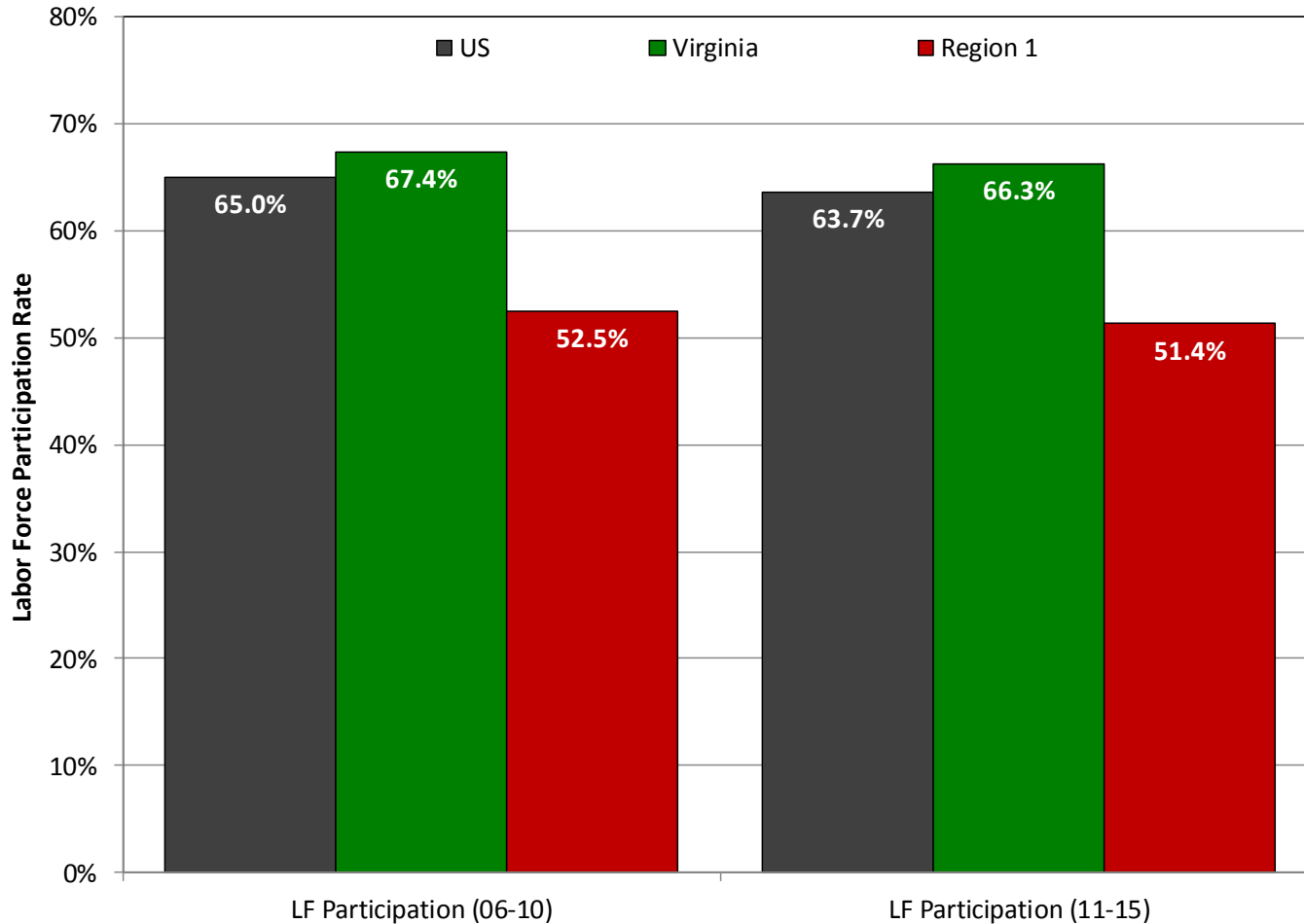
VIRGINIA INITIATIVE FOR  
**GROWTH &  
OPPORTUNITY**  
IN EACH REGION

# Labor Force



VIRGINIA INITIATIVE FOR  
**GROWTH &  
OPPORTUNITY**  
IN EACH REGION

# Labor Force Participation Rate



Source: US Census Bureau, 2006-2010 and 2011-2015 American Community Surveys



# Labor Force Participation Rate

## Labor Force Participation Rate: Region 1

	LF Participation (06-10)	LF Participation (11-15)
<b>United States</b>	<b>65.0%</b>	<b>63.7%</b>
<b>Virginia</b>	<b>67.4%</b>	<b>66.3%</b>
<b>Region 1</b>	<b>52.5%</b>	<b>51.4%</b>
Bland	50.1%	48.1%
Buchanan	41.2%	40.1%
Carroll	56.9%	56.6%
Dickenson	40.3%	43.6%
Grayson	54.1%	52.4%
Lee	48.8%	43.3%
Russell	51.6%	47.5%
Scott	52.1%	50.1%
Smyth	53.5%	54.3%
Tazewell	51.2%	50.3%
Washington	57.7%	57.6%
Wise	49.0%	46.6%
Wythe	61.4%	58.7%
Bristol city	57.0%	57.5%
Galax city	53.0%	54.2%
Norton city	60.6%	62.0%

Source: US Census Bureau, 2006-2010 and 2011-2015 American Community Surveys



# Commuting (Inflow/Outflow)

Inflow/Outflow Job Counts in 2014



<span style="color: darkgreen;">■</span>	29,413 - Employed in Selection Area, Live Outside
<span style="color: lightgreen;">■</span>	41,376 - Live in Selection Area, Employed Outside
<span style="color: mediumseagreen;">■</span>	99,462 - Employed and Live in Selection Area

## Inflow/Outflow Job Counts (Primary Jobs): Region 1

	2014	
	Count	Share
Employed in the Selection Area	128,875	100.00%
Employed in the Selection Area but Living Outside	29,413	22.80%
Employed and Living in the Selection Area	99,462	77.20%
Living in the Selection Area	140,838	100.00%
Living in the Selection Area but Employed Outside	41,376	29.40%
Living and Employed in the Selection Area	99,462	70.60%

Source: US Census Bureau, Longitudinal Employer-Household Dynamics OnTheMap, 2014



# Commuting (Inflow/Outflow)

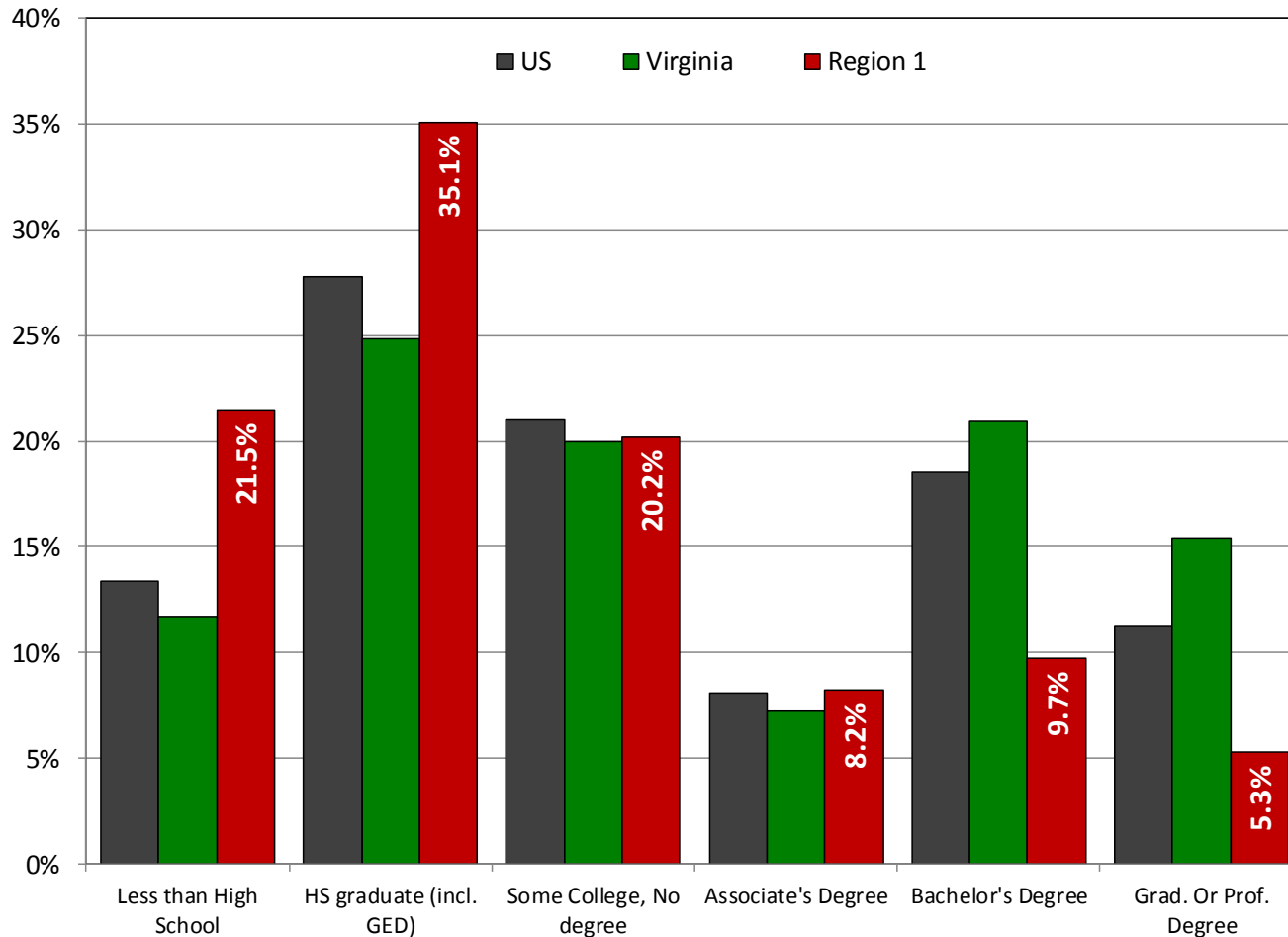
## Commuting Patterns: Region 1

	Employed in Selection Area	Employed in the Selection Area but Living Outside		Employed and Living in the Selection Area		Living in the Selection Area	Living in the Selection Area but Employed Outside		Living and Employed in the Selection Area	
<b>Virginia</b>	<b>3,313,939</b>	<b>286,033</b>	<b>8.6%</b>	<b>3,027,906</b>	<b>91.4%</b>	<b>3,377,666</b>	<b>349,760</b>	<b>10.4%</b>	<b>3,027,906</b>	<b>89.6%</b>
<b>Region 1</b>	<b>128,875</b>	<b>29,413</b>	<b>22.8%</b>	<b>99,462</b>	<b>77.2%</b>	<b>140,838</b>	<b>41,376</b>	<b>29.4%</b>	<b>99,462</b>	<b>70.6%</b>
Bland	2,016	1,313	65.1%	703	34.9%	2,865	2,162	75.5%	703	24.5%
Buchanan	6,989	3,702	53.0%	3,287	47.0%	7,525	4,238	56.3%	3,287	43.7%
Carroll	6,054	2,840	46.9%	3,214	53.1%	10,886	7,672	70.5%	3,214	29.5%
Dickenson	1,196	701	58.6%	495	41.4%	3,965	3,470	87.5%	495	12.5%
Grayson	2,199	1,014	46.1%	1,185	53.9%	5,829	4,644	79.7%	1,185	20.3%
Lee	4,360	1,830	42.0%	2,530	58.0%	8,559	6,029	70.4%	2,530	29.6%
Russell	6,270	3,755	59.9%	2,515	40.1%	9,318	6,803	73.0%	2,515	27.0%
Scott	4,493	2,621	58.3%	1,872	41.7%	7,986	6,114	76.6%	1,872	23.4%
Smyth	11,403	5,186	45.5%	6,217	54.5%	11,596	5,379	46.4%	6,217	53.6%
Tazewell	15,591	8,485	54.4%	7,106	45.6%	15,916	8,810	55.4%	7,106	44.6%
Washington	21,259	12,425	58.4%	8,834	41.6%	20,425	11,591	56.7%	8,834	43.3%
Wise	12,992	7,793	60.0%	5,199	40.0%	11,866	6,667	56.2%	5,199	43.8%
Wythe	10,731	5,445	50.7%	5,286	49.3%	11,541	6,255	54.2%	5,286	45.8%
Bristol city	11,165	9,234	82.7%	1,931	17.3%	6,515	4,584	70.4%	1,931	29.6%
Galax city	5,699	4,731	83.0%	968	17.0%	2,466	1,498	60.7%	968	39.3%
Norton city	3,982	3,535	88.8%	447	11.2%	1,361	914	67.2%	447	32.8%

Source: US Census Bureau, Longitudinal Employer-Household Dynamics OnTheMap, 2014



# Educational Attainment



Source: US Census Bureau, 2011-2015 American Community Survey



# Educational Attainment

## Educational Attainment: Region 1

	2006-2010						2011-2015					
	Less than High School	HS graduate (incl. GED)	Some College, No degree	Associate's Degree	Bachelor's Degree	Grad. Or Prof. Degree	Less than High School	HS graduate (incl. GED)	Some College, No degree	Associate's Degree	Bachelor's Degree	Grad. Or Prof. Degree
<b>United States</b>	14.9%	29.0%	20.6%	7.5%	17.6%	10.3%	13.3%	27.8%	21.1%	8.1%	18.5%	11.2%
<b>Virginia</b>	13.9%	26.0%	19.6%	6.7%	19.9%	13.9%	11.7%	24.8%	19.9%	7.3%	21.0%	15.4%
<b>Region 1</b>	26.1%	34.1%	18.7%	7.7%	9.2%	4.4%	21.5%	35.1%	20.2%	8.2%	9.7%	5.3%
Bland	17.0%	40.5%	18.3%	12.1%	7.6%	4.4%	14.7%	39.5%	23.8%	7.9%	10.6%	3.5%
Buchanan	36.3%	31.5%	17.2%	6.1%	5.5%	3.3%	30.2%	34.4%	19.2%	6.4%	6.7%	3.2%
Carroll	27.6%	35.5%	17.4%	7.8%	8.1%	3.6%	20.2%	34.5%	19.9%	10.9%	10.5%	4.0%
Dickenson	35.8%	36.6%	14.5%	4.5%	5.1%	3.5%	24.9%	35.6%	20.8%	7.7%	6.5%	4.6%
Grayson	26.6%	35.4%	19.4%	8.3%	8.2%	2.1%	21.4%	41.1%	18.0%	9.5%	7.1%	2.8%
Lee	28.6%	32.1%	20.1%	7.3%	8.2%	3.8%	25.5%	33.6%	22.6%	6.3%	7.6%	4.5%
Russell	28.6%	35.4%	17.3%	7.9%	7.7%	3.0%	23.4%	36.7%	19.5%	8.0%	8.0%	4.4%
Scott	26.4%	39.4%	14.9%	9.0%	6.4%	3.9%	23.5%	36.2%	21.8%	6.7%	8.1%	3.6%
Smyth	24.3%	36.4%	16.5%	8.1%	10.0%	4.6%	18.2%	38.8%	20.6%	7.3%	9.2%	5.8%
Tazewell	24.4%	33.1%	20.3%	7.8%	10.1%	4.2%	20.8%	35.8%	20.5%	9.4%	8.5%	5.0%
Washington	19.6%	32.6%	19.6%	7.6%	13.4%	7.1%	15.9%	32.9%	19.0%	8.8%	14.4%	8.9%
Wise	29.7%	34.4%	18.8%	5.8%	7.9%	3.5%	26.0%	32.4%	20.7%	6.9%	9.0%	5.0%
Wythe	22.9%	33.3%	20.5%	9.3%	9.3%	4.6%	18.8%	36.4%	19.4%	9.4%	9.8%	6.1%
Bristol city	20.2%	29.8%	21.7%	8.5%	13.6%	6.1%	17.6%	32.8%	18.7%	7.6%	16.1%	7.3%
Galax city	26.5%	30.1%	23.2%	7.6%	8.6%	4.1%	27.7%	33.7%	20.3%	6.8%	8.2%	3.4%
Norton city	22.4%	23.7%	23.9%	9.4%	13.0%	7.6%	18.0%	19.4%	29.0%	14.0%	14.3%	5.3%

Source: US Census Bureau, 2006-2010 and 2011-2015 American Community Surveys



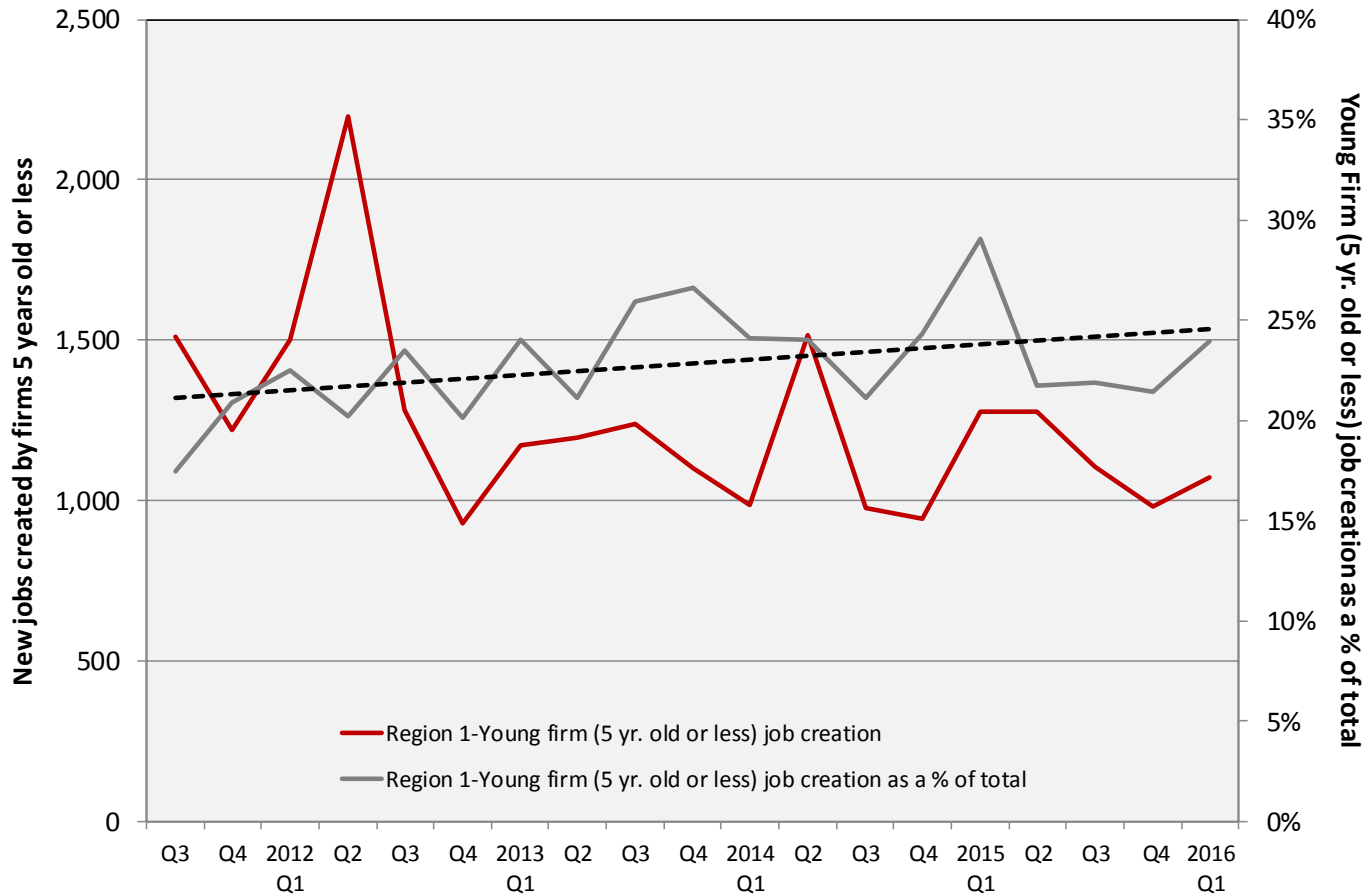
VIRGINIA INITIATIVE FOR  
**GROWTH &  
OPPORTUNITY**  
IN EACH REGION

# Firm Growth



VIRGINIA INITIATIVE FOR  
**GROWTH &  
OPPORTUNITY**  
IN EACH REGION

# Jobs Created by Young Companies (5 years old or less)



Source: US Census Bureau, Longitudinal Employer-Household Dynamics, Quarterly Workforce Indicators



VIRGINIA INITIATIVE FOR  
**GROWTH &  
 OPPORTUNITY**  
 IN EACH REGION

# Jobs Created by Young Companies (5 years old or less)

## Region 1: Young firm (5 yrs old or less) job creation

	2012 Average	2015 Average	2012 as a % of Total	2015 as a % of Total
<b>US</b>	<b>1,542,135</b>	<b>1,674,953</b>	<b>25.2%</b>	<b>26.7%</b>
<b>Virginia</b>	<b>42,118</b>	<b>39,288</b>	<b>19.4%</b>	<b>26.2%</b>
<b>Region 1</b>	<b>1,478</b>	<b>1,161</b>	<b>21.4%</b>	<b>23.3%</b>
Bland	9	14	10.7%	21.9%
Buchanan	62	39	20.1%	16.0%
Carroll	86	92	23.7%	32.1%
Dickenson	49	24	24.9%	18.5%
Grayson	35	31	27.8%	32.5%
Lee	35	48	13.9%	22.6%
Russell	74	67	16.1%	25.1%
Scott	43	51	17.9%	32.5%
Smyth	105	105	24.6%	22.7%
Tazewell	162	144	21.5%	26.7%
Washington	270	146	21.8%	16.4%
Wise	106	73	17.3%	21.0%
Wythe	113	137	21.5%	29.4%
Bristol city	233	99	26.3%	21.6%
Galax city	53	70	21.8%	34.2%
Norton city	43	23	22.5%	14.5%

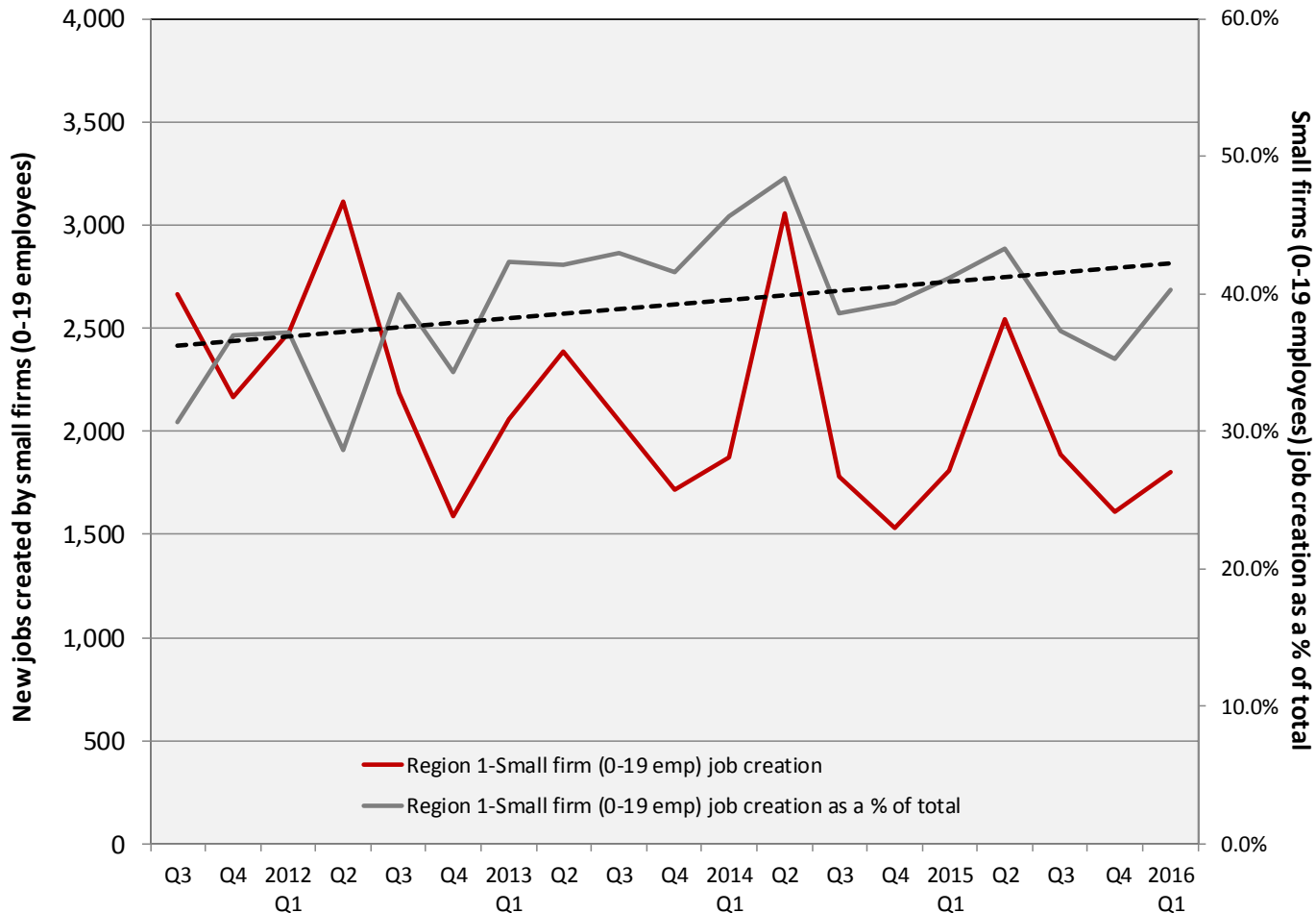
Source: US Census Bureau, LEHD, QWI



VIRGINIA INITIATIVE FOR  
**GROWTH &  
 OPPORTUNITY**  
 IN EACH REGION

# Jobs Created by Small Companies

## (less than 20 employees)



Source: US Census Bureau, Longitudinal Employer-Household Dynamics, Quarterly Workforce Indicators





# Jobs Created by Small Companies

(less than 20 employees)

## Region 1: Small firm (0-19 Emp.) job creation

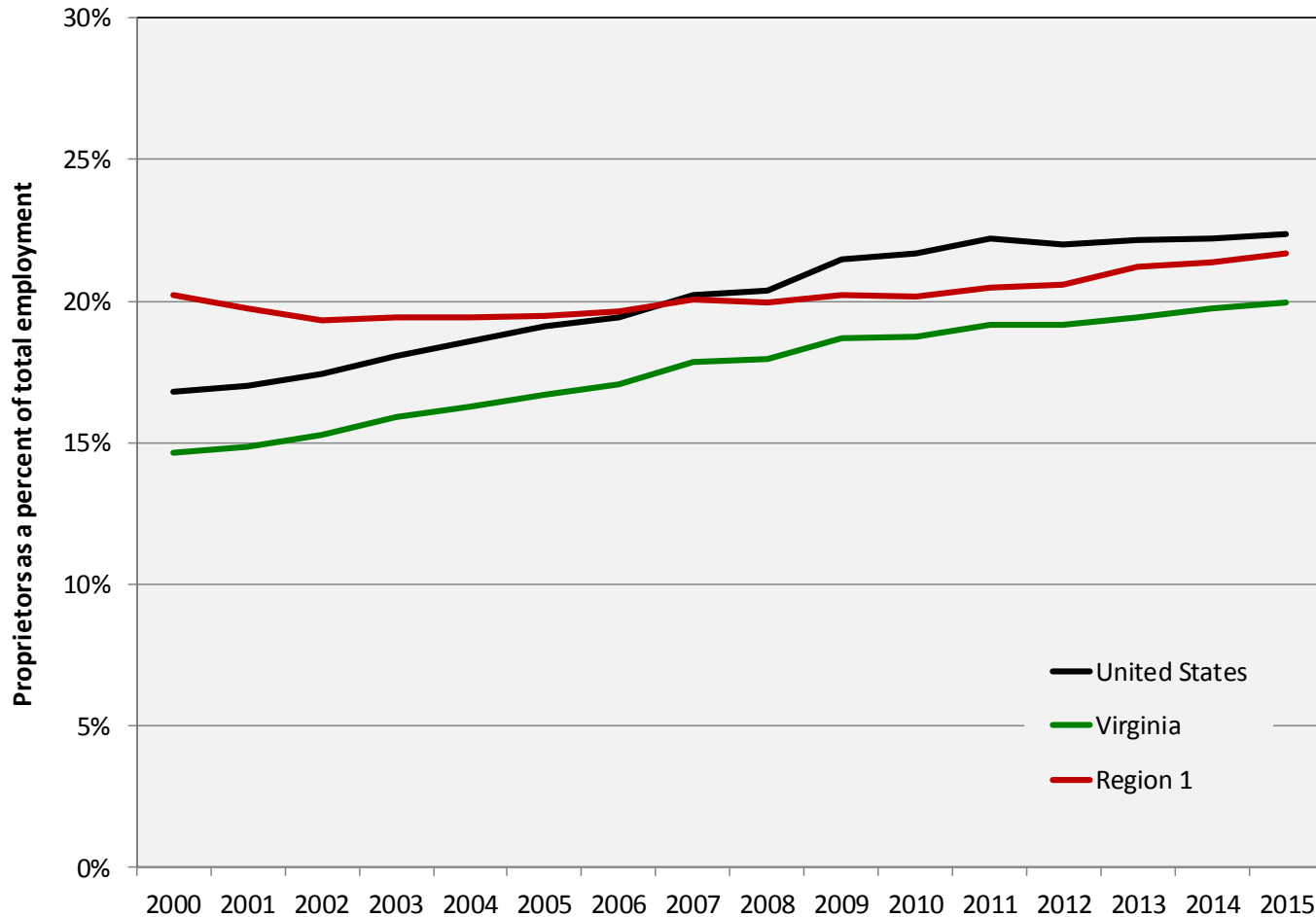
	2012 Average	2015 Average	2012 as a % of Total	2015 as a % of Total
<b>US</b>	<b>2,203,129</b>	<b>2,268,500</b>	<b>36.0%</b>	<b>36.2%</b>
<b>Virginia</b>	<b>58,797</b>	<b>54,683</b>	<b>27.1%</b>	<b>36.4%</b>
<b>Region 1</b>	<b>2,342</b>	<b>1,963</b>	<b>33.9%</b>	<b>39.4%</b>
Bland	23	20	29.2%	31.6%
Buchanan	149	103	48.7%	41.9%
Carroll	142	163	38.9%	57.0%
Dickenson	89	66	44.9%	50.4%
Grayson	76	66	60.3%	69.1%
Lee	87	93	34.6%	43.8%
Russell	148	122	32.0%	45.6%
Scott	73	59	30.3%	37.6%
Smyth	161	156	37.7%	33.9%
Tazewell	302	226	39.9%	41.9%
Washington	378	302	30.5%	33.9%
Wise	213	147	34.8%	42.4%
Wythe	193	190	36.7%	40.8%
Bristol city	148	125	16.7%	27.3%
Galax city	81	89	33.1%	43.5%
Norton city	82	37	43.0%	23.5%

Source: US Census Bureau, LEHD, QWI



VIRGINIA INITIATIVE FOR  
**GROWTH &  
OPPORTUNITY**  
IN EACH REGION

# Sole Proprietorships as a percent of total employment



Source: US Bureau of Economic Analysis



# Sole Proprietorships

Proprietors as a percent of total employment: Region 1

	2000 Proprietors	2010 Proprietors	2015 Proprietors	Annual Growth (00-10)	Annual Growth (10-15)	Proprietors as a % of total employment
<b>United States</b>	<b>27,760,800</b>	<b>37,508,700</b>	<b>42,561,400</b>	<b>3.1%</b>	<b>2.1%</b>	<b>22.4%</b>
<b>Virginia</b>	<b>644,573</b>	<b>890,602</b>	<b>1,008,978</b>	<b>3.3%</b>	<b>2.1%</b>	<b>19.9%</b>
<b>Region 1</b>	<b>38,467</b>	<b>36,962</b>	<b>38,356</b>	<b>-0.4%</b>	<b>0.6%</b>	<b>21.7%</b>
Bland	1,037	770	808	-2.9%	0.8%	28.0%
Buchanan	2,099	1,216	1,259	-5.3%	0.6%	14.6%
Carroll + Galax, VA*	4,688	3,328	3,493	-3.4%	0.8%	21.0%
Dickenson	1,174	856	803	-3.1%	-1.1%	16.9%
Grayson	1,928	2,025	1,989	0.5%	-0.3%	41.1%
Lee	3,324	2,241	2,459	-3.9%	1.6%	33.2%
Russell	3,261	2,576	2,609	-2.3%	0.2%	25.1%
Scott	2,723	2,670	2,706	-0.2%	0.2%	33.9%
Smyth	3,696	3,269	3,251	-1.2%	-0.1%	19.8%
Tazewell	3,065	3,622	3,871	1.7%	1.1%	19.0%
Washington + Bristol, VA*	6,899	8,232	8,628	1.8%	0.8%	21.2%
Wise + Norton, VA*	1,876	2,970	2,941	4.7%	-0.2%	14.7%
Wythe	2,697	3,187	3,539	1.7%	1.8%	22.3%

Source: US Bureau of Economic Analysis



VIRGINIA INITIATIVE FOR  
**GROWTH &  
OPPORTUNITY**  
IN EACH REGION

# Thank You

Terry L. Clower Ph.D. – [tclower@gmu.edu](mailto:tclower@gmu.edu)

Mark C. White Ph.D. – [mwhite@gmu.edu](mailto:mwhite@gmu.edu)

Spencer A. Shanholtz – [sshanhol@gmu.edu](mailto:sshanhol@gmu.edu)



[cra.gmu.edu](http://cra.gmu.edu)

[@GMU\\_CRA](#)