



VIRGINIA INITIATIVE FOR
**GROWTH &
OPPORTUNITY**
IN EACH REGION

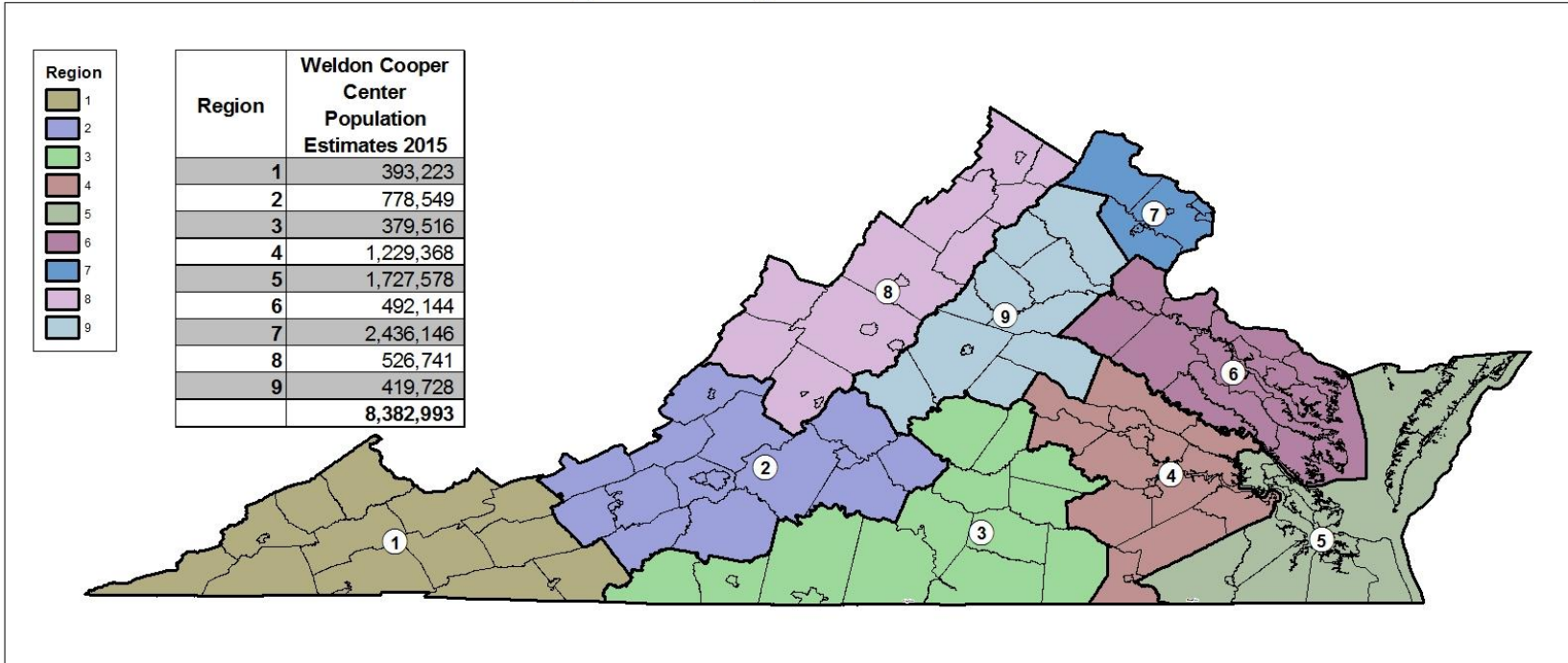
REGIONAL BASELINE MEASURES
REGION 4





VIRGINIA INITIATIVE FOR
**GROWTH &
OPPORTUNITY**
IN EACH REGION

GO Virginia Regional Boundaries



0 15 30 60 90 120 Miles

Source: US Census, VA PDC



12/5/2016



VIRGINIA INITIATIVE FOR
**GROWTH &
OPPORTUNITY**
IN EACH REGION

Region 4

Counties of:

- Charles City, Chesterfield, Dinwiddie, Goochland, Greenville, Hanover, Henrico, New Kent, Powhatan, Prince George, Surry, Sussex

Cities of:

- Colonial Heights, Emporia, Hopewell, Petersburg, Richmond



VIRGINIA INITIATIVE FOR
**GROWTH &
OPPORTUNITY**
IN EACH REGION

Data Included

- **Population**
 - Population Trends
- **Income and Wealth**
 - Per Capita Income
 - Percent of Population in Poverty
- **Employment**
 - Total Employment
 - Unemployment Rate
- **Industry**
 - Employment Trends by Industry Sector
 - Relative Concentration (Location Quotients) by Sector
 - Wages by Industry Sector



VIRGINIA INITIATIVE FOR
**GROWTH &
OPPORTUNITY**
IN EACH REGION

Data Included

- **Labor Force**
 - Labor Force Participation Rate
 - Commuting inflow/outflow
 - Educational Attainment
- **Firm Growth**
 - Jobs Created by Young Companies (5 years old or less)
 - Jobs Created by Small Companies (less than 20 employees)
 - Sole Proprietorships



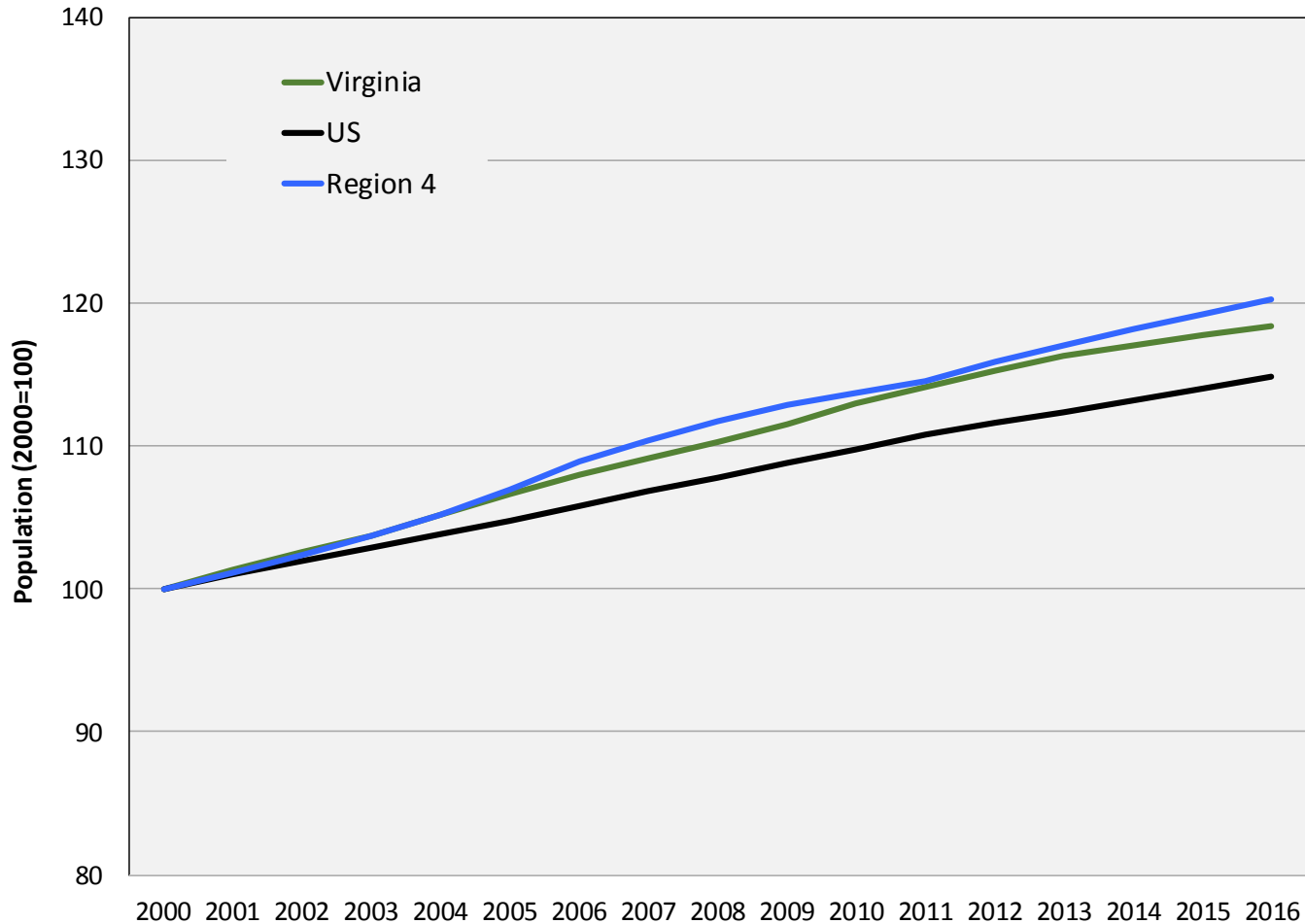
VIRGINIA INITIATIVE FOR
**GROWTH &
OPPORTUNITY**
IN EACH REGION

Population



VIRGINIA INITIATIVE FOR
**GROWTH &
OPPORTUNITY**
IN EACH REGION

Population Trends



Source: US Census Bureau, Population Estimates Programs



Population Trends

Population Trends: Region 4

	2000	2010	2016	Annual Growth (00-10)	Annual Growth (10-16)
United States	281,424,600	308,745,538	323,127,513	0.9%	0.8%
Virginia	7,105,817	8,025,773	8,411,808	1.2%	0.8%
Region 4	1,036,200	1,178,106	1,245,838	1.3%	0.9%
Charles City	6,930	7,271	7,071	0.5%	-0.5%
Chesterfield	261,047	317,342	339,009	2.0%	1.1%
Dinwiddie	24,674	28,021	28,144	1.3%	0.1%
Goochland	16,935	21,741	22,668	2.5%	0.7%
Greensville	11,566	12,215	11,706	0.5%	-0.7%
Hanover	86,972	99,939	104,392	1.4%	0.7%
Henrico	264,385	307,633	326,501	1.5%	1.0%
New Kent	13,537	18,558	21,147	3.2%	2.2%
Powhatan	22,585	28,118	28,443	2.2%	0.2%
Prince George	33,100	35,633	37,845	0.7%	1.0%
Surry	6,833	7,060	6,544	0.3%	-1.3%
Sussex	12,456	12,000	11,504	-0.4%	-0.7%
Colonial Heights city	16,905	17,359	17,772	0.3%	0.4%
Emporia city	5,655	5,933	5,305	0.5%	-1.8%
Hopewell city	22,277	22,646	22,735	0.2%	0.1%
Petersburg city	33,561	32,522	31,882	-0.3%	-0.3%
Richmond city	196,782	204,115	223,170	0.4%	1.5%

Source: US Census Bureau, Population Estimates Programs



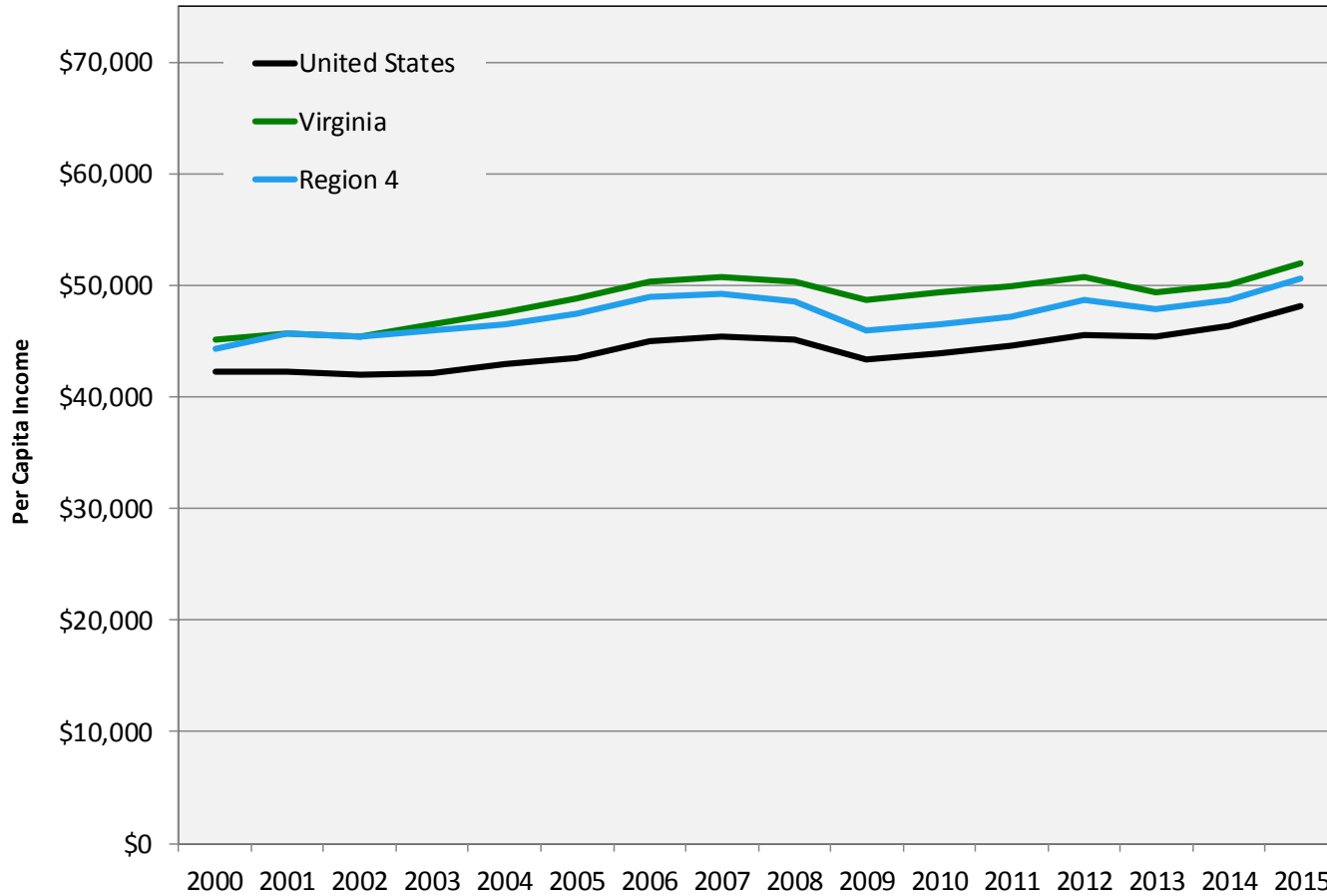
VIRGINIA INITIATIVE FOR
**GROWTH &
OPPORTUNITY**
IN EACH REGION

Income and Wealth



VIRGINIA INITIATIVE FOR
**GROWTH &
OPPORTUNITY**
IN EACH REGION

Per Capita Income



Source: US Bureau of Economic Analysis, PCI adjusted for 2015 dollars



Per Capita Income

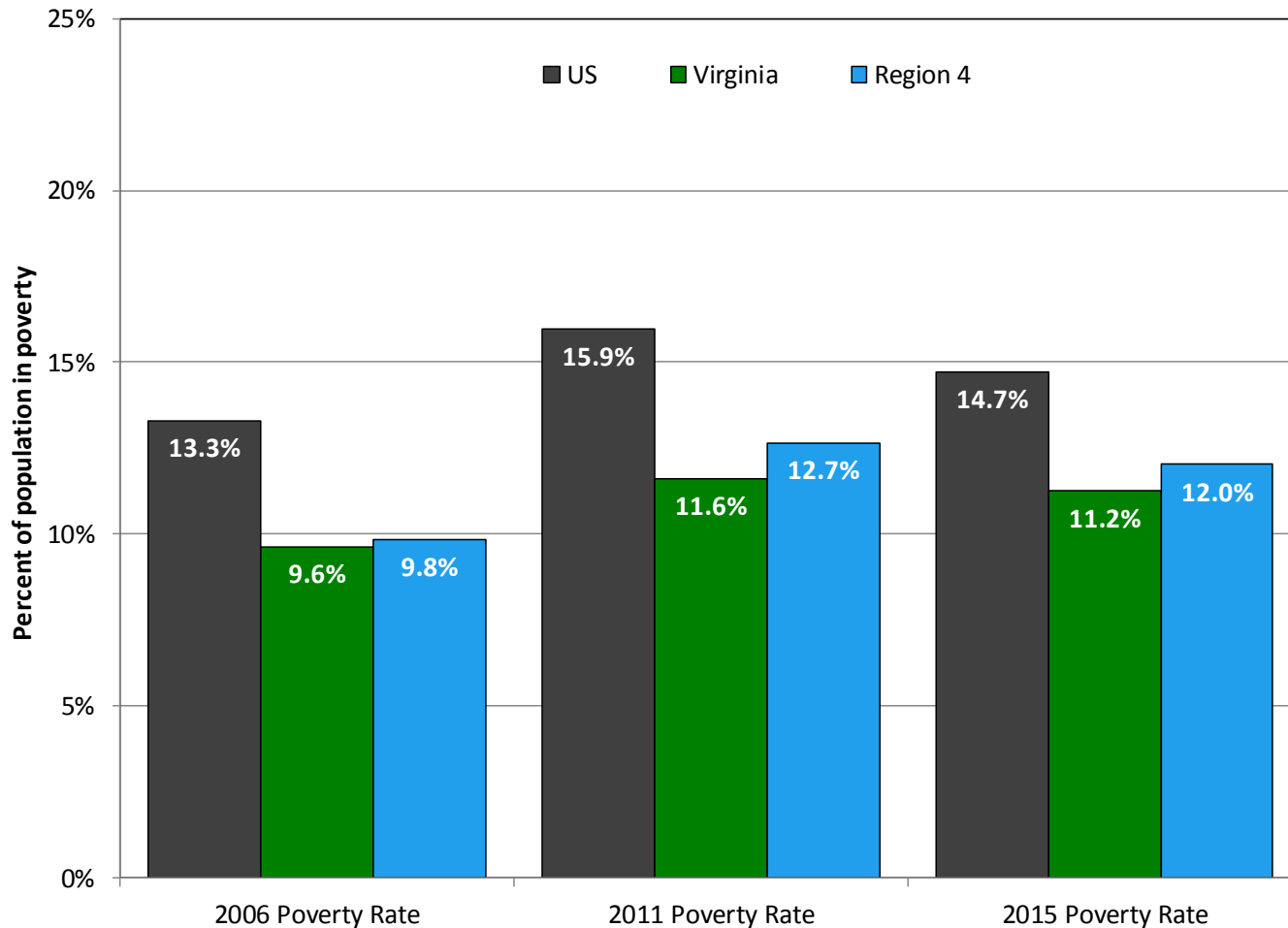
Per Capita Income: Region 4

	2000	2010	2015	Annual Growth (00-10)	Annual Growth (10-15)
United States	\$42,231	\$43,902	\$48,112	0.4%	1.5%
Virginia	\$45,144	\$49,421	\$52,052	0.9%	0.9%
Region 4	\$44,363	\$46,492	\$50,623	0.5%	1.4%
Charles City	\$34,818	\$38,035	\$42,002	0.9%	1.7%
Chesterfield	\$45,991	\$46,186	\$48,513	0.0%	0.8%
Dinwiddie, Colonial Heights + Petersburg, VA*	\$35,821	\$37,239	\$38,010	0.4%	0.3%
Goochland	\$59,803	\$74,986	\$84,253	2.3%	2.0%
Greensville + Emporia, VA*	\$25,263	\$28,524	\$30,101	1.2%	0.9%
Hanover	\$44,480	\$48,627	\$53,971	0.9%	1.8%
Henrico	\$49,883	\$50,831	\$58,452	0.2%	2.4%
New Kent	\$39,038	\$46,481	\$54,876	1.8%	2.8%
Powhatan	\$38,708	\$42,962	\$49,105	1.0%	2.3%
Prince George + Hopewell, VA*	\$33,039	\$35,306	\$37,178	0.7%	0.9%
Surry	\$30,398	\$37,153	\$39,631	2.0%	1.1%
Sussex	\$26,903	\$29,064	\$28,943	0.8%	-0.1%
Richmond city	\$44,467	\$46,810	\$48,652	0.5%	0.6%

Source: US Bureau of Economic Analysis, PCI adjusted for 2015 dollars



Percent of Population in Poverty



Source: US Census Bureau, Small Area Income and Poverty Estimates



Percent of Population in Poverty

Poverty Trends: Region 4

	2006 Poverty Rate	2011 Poverty Rate	2015 Poverty Rate
United States	13.3%	15.9%	14.7%
Virginia	9.6%	11.6%	11.2%
Region 4	9.8%	12.7%	12.0%
Charles City	10.5%	11.7%	11.6%
Chesterfield	5.5%	7.2%	6.9%
Dinwiddie	11.1%	13.3%	12.4%
Goochland	6.3%	8.1%	7.4%
Greensville	18.8%	24.7%	27.9%
Hanover	4.1%	6.1%	6.2%
Henrico	7.9%	10.8%	9.3%
New Kent	5.5%	6.9%	6.7%
Powhatan	5.8%	7.4%	6.4%
Prince George	8.6%	10.7%	9.9%
Surry	10.7%	12.8%	13.0%
Sussex	23.5%	20.7%	22.1%
Colonial Heights city	7.3%	9.7%	10.6%
Emporia city	18.7%	22.8%	22.5%
Hopewell city	16.6%	18.3%	20.6%
Petersburg city	19.3%	24.3%	28.4%
Richmond city	20.7%	26.4%	24.4%

Source: US Census Bureau, Small Area Income and Poverty Estimates



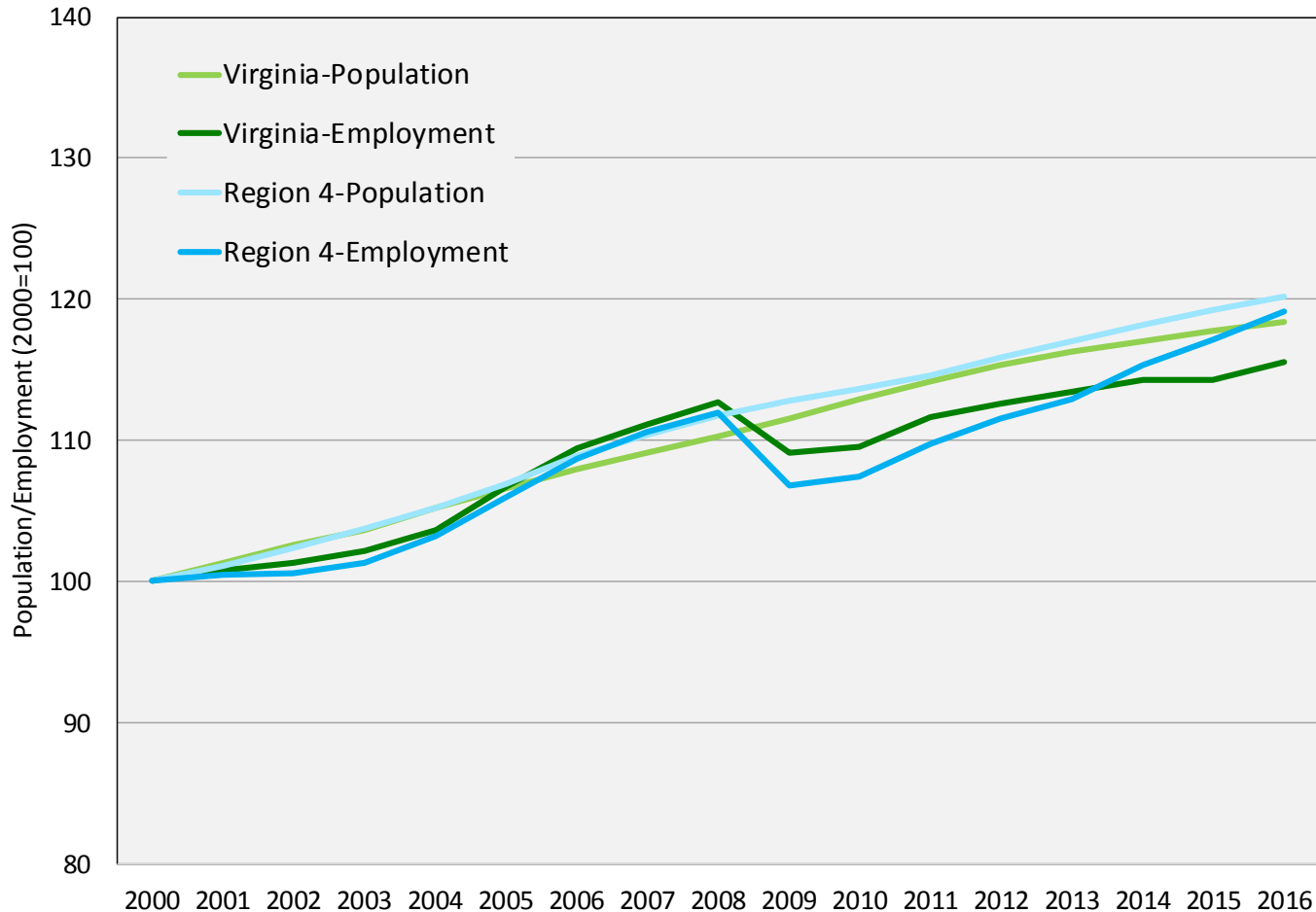
VIRGINIA INITIATIVE FOR
**GROWTH &
OPPORTUNITY**
IN EACH REGION

Employment



VIRGINIA INITIATIVE FOR
**GROWTH &
OPPORTUNITY**
IN EACH REGION

Total Employment



Source: US Census Bureau Population Estimates, US Bureau of Labor Statistics Local Area Unemployment Statistics (2016 preliminary)



Total Employment

Employment Trends: Region 4

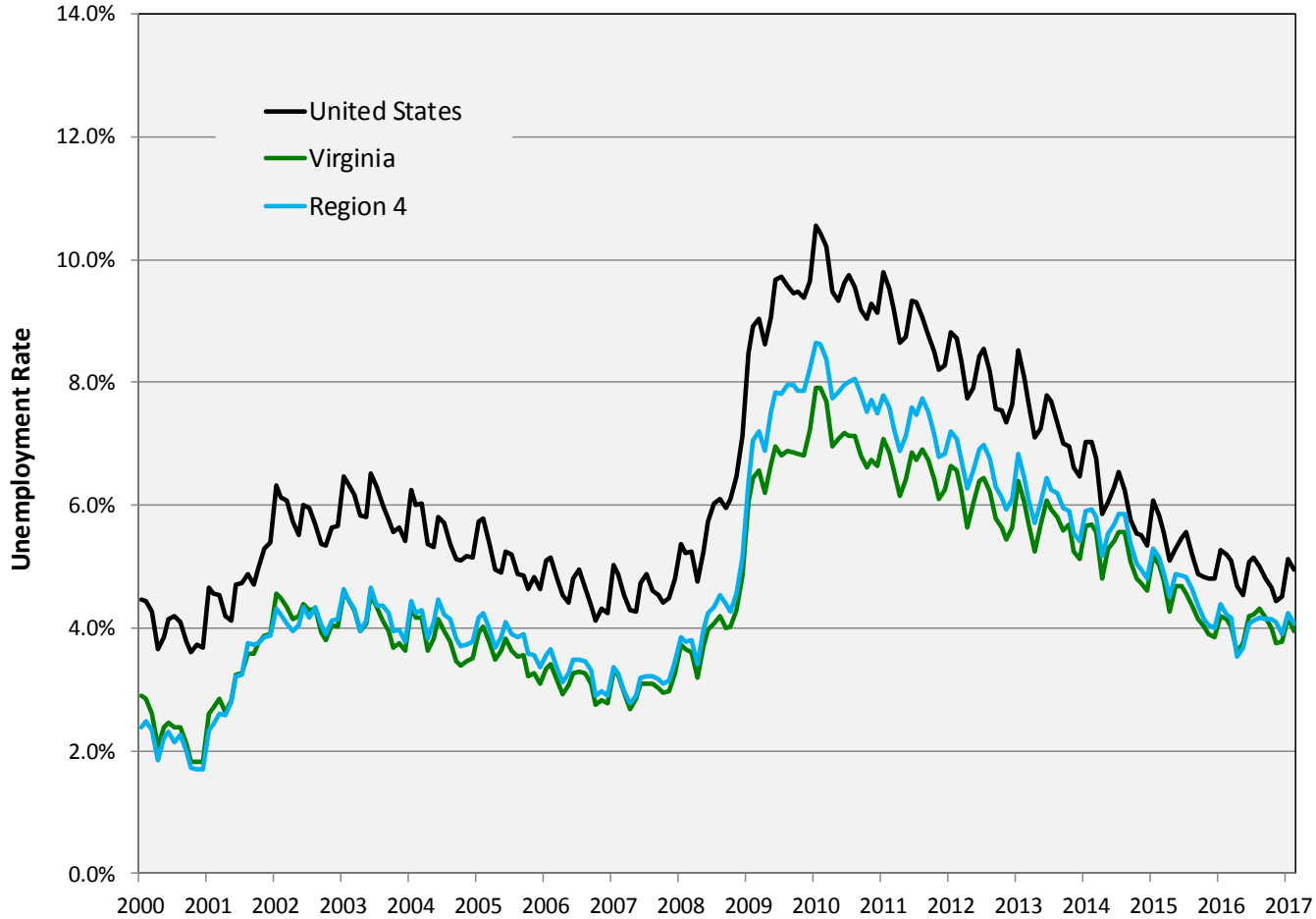
	2000	2010	2016	Annual Growth (00-10)	Annual Growth (10-16)
United States	136,891,000	139,064,000	151,436,000	0.2%	1.4%
Virginia	3,522,865	3,860,386	4,070,260	0.9%	0.9%
Region 4	522,673	561,551	622,715	0.7%	1.7%
Charles City	3,526	3,527	3,613	0.0%	0.4%
Chesterfield	139,745	156,307	174,712	1.1%	1.9%
Dinwiddie	11,784	12,367	12,968	0.5%	0.8%
Goochland	8,759	9,733	10,331	1.1%	1.0%
Greensville	3,876	4,124	4,000	0.6%	-0.5%
Hanover	46,695	50,855	55,210	0.9%	1.4%
Henrico	142,902	155,452	173,755	0.8%	1.9%
New Kent	7,165	9,550	10,942	2.9%	2.3%
Powhatan	11,045	12,557	13,482	1.3%	1.2%
Prince George	12,884	12,838	14,366	0.0%	1.9%
Surry	3,297	3,363	3,497	0.2%	0.7%
Sussex	4,364	3,792	3,870	-1.4%	0.3%
Colonial Heights city	8,422	7,828	8,511	-0.7%	1.4%
Emporia city	2,292	2,251	2,102	-0.2%	-1.1%
Hopewell city	9,590	8,721	9,149	-0.9%	0.8%
Petersburg city	13,440	11,939	12,797	-1.2%	1.2%
Richmond city	92,887	96,347	109,410	0.4%	2.1%

Source: US BLS Local Area Unemployment Statistics (2016 preliminary)



VIRGINIA INITIATIVE FOR
**GROWTH &
OPPORTUNITY**
IN EACH REGION

Unemployment Rate



Source: US Bureau of Labor Statistics, Local Area Unemployment Statistics



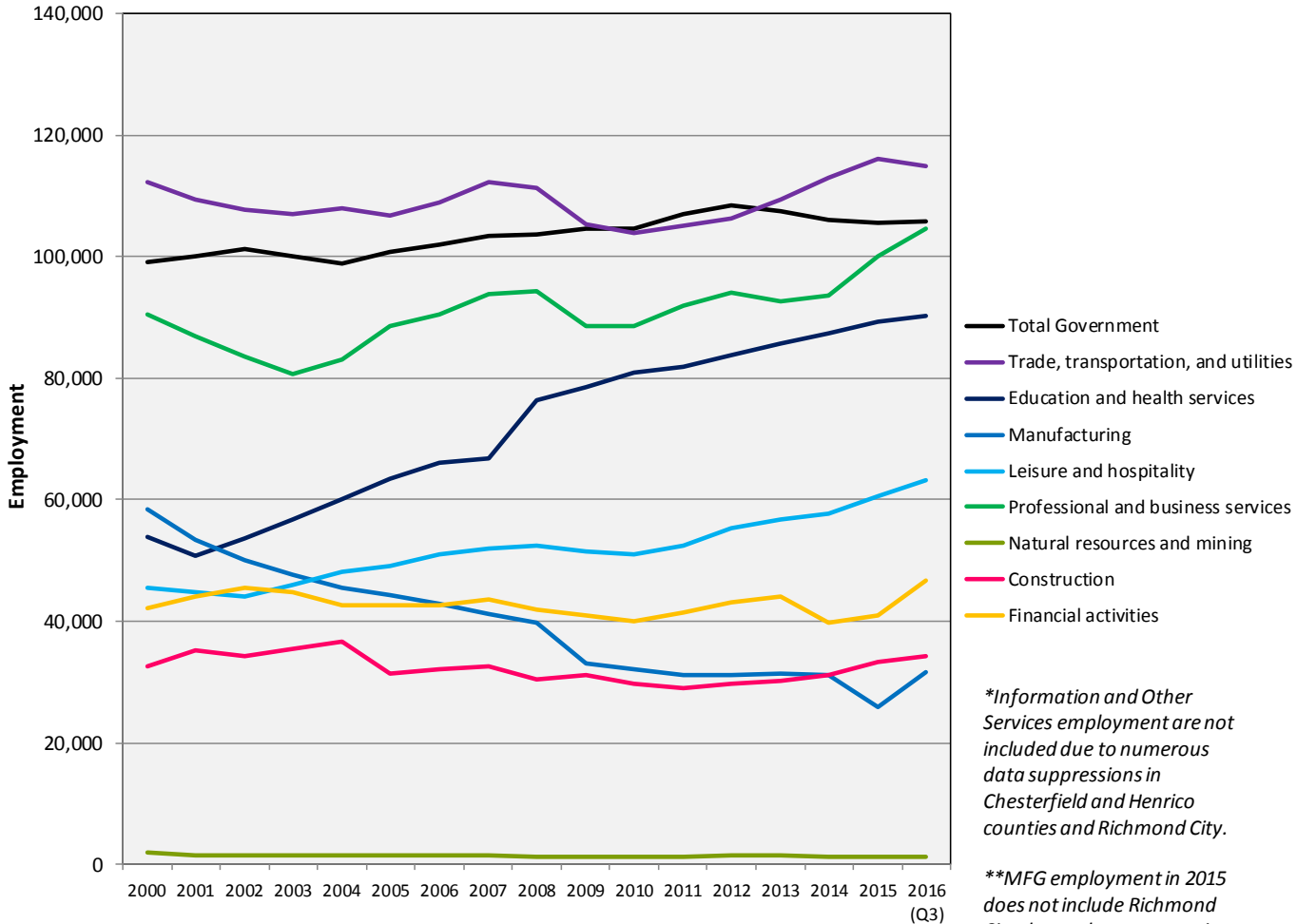
VIRGINIA INITIATIVE FOR
**GROWTH &
OPPORTUNITY**
IN EACH REGION

Industry



VIRGINIA INITIATIVE FOR
**GROWTH &
 OPPORTUNITY**
 IN EACH REGION

Employment Trends by Industry Sector



Source: US Bureau of Labor Statistics, Quarterly Census of Employment and Wages

**Information and Other Services employment are not included due to numerous data suppressions in Chesterfield and Henrico counties and Richmond City.*

***MFG employment in 2015 does not include Richmond City due to data suppressions.*



Employment Trends by Industry Sector

Region 4: Industry Sectors, 2015*

Sector	Employment#	LQ	Region 4 Avg Wage	US Avg Wage
Trade, transportation, and utilities	116,236	0.99	\$39,540	\$44,321
Professional and business services	100,199	1.16	\$69,003	\$69,270
Education and health services	89,325	0.96	\$47,034	\$47,383
Leisure and hospitality	60,505	0.91	\$16,918	\$21,807
Local government	51,396	0.84	\$41,334	\$47,573
Financial activities	40,966	1.19	\$77,537	\$87,915
State government	37,976	1.89	\$49,918	\$55,878
Construction	33,385	1.18	\$51,491	\$57,009
Manufacturing	25,770	0.48	\$62,038	\$64,305
Other services	20,230	1.07	\$33,058	\$35,116
Federal government	16,284	1.34	\$74,563	\$77,900
Information	6,998	0.58	\$63,656	\$95,098
Natural resources and mining	1,136	0.13	\$46,290	\$58,461

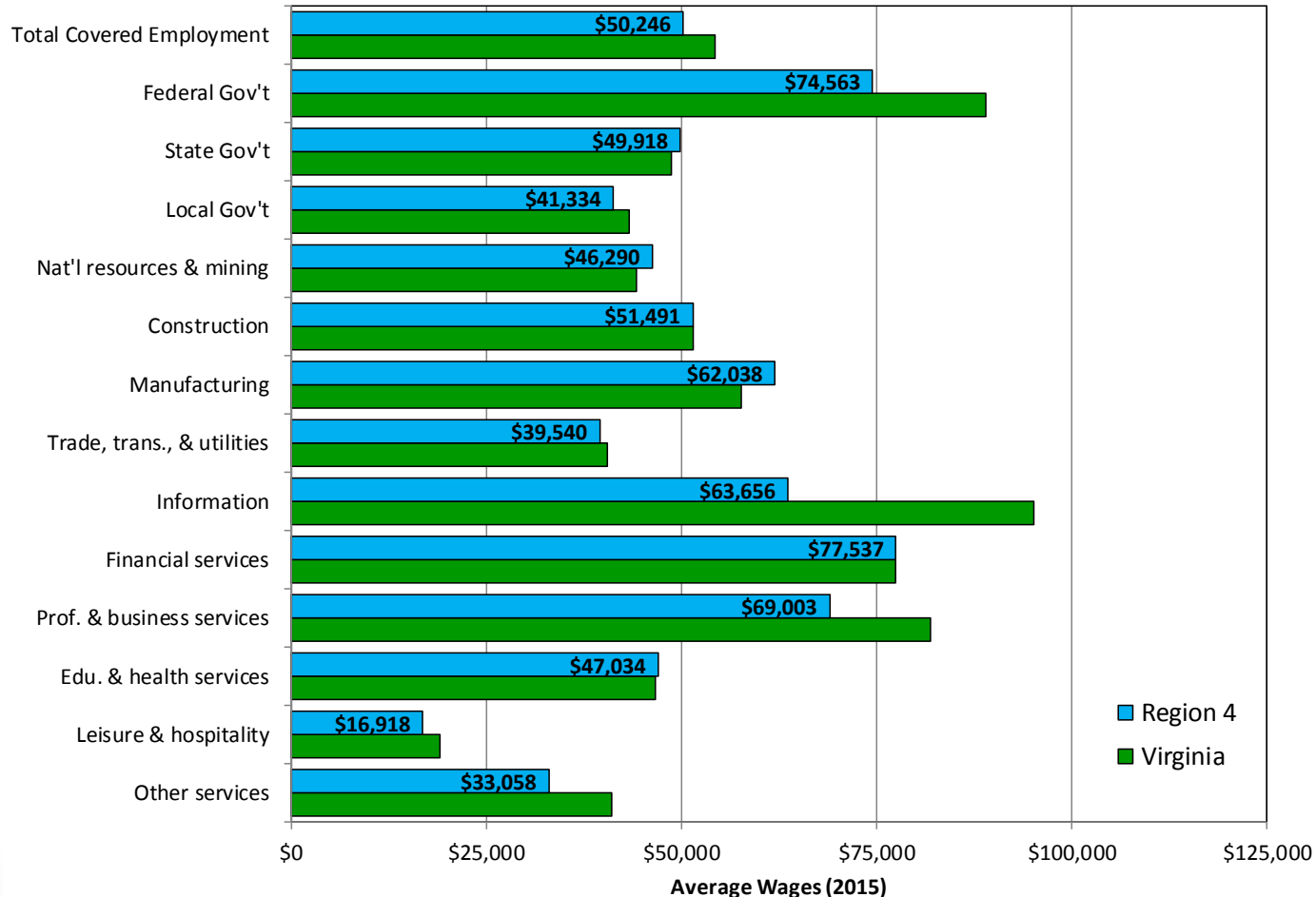
Source: US Bureau of Labor Statistics, Quarterly Census of Employment and Wages

*2015 is the most recently available complete year

#Does not include suppressed employment



Industry Wages by Sector



Source: US Bureau of Labor Statistics, Quarterly Census of Employment and Wages



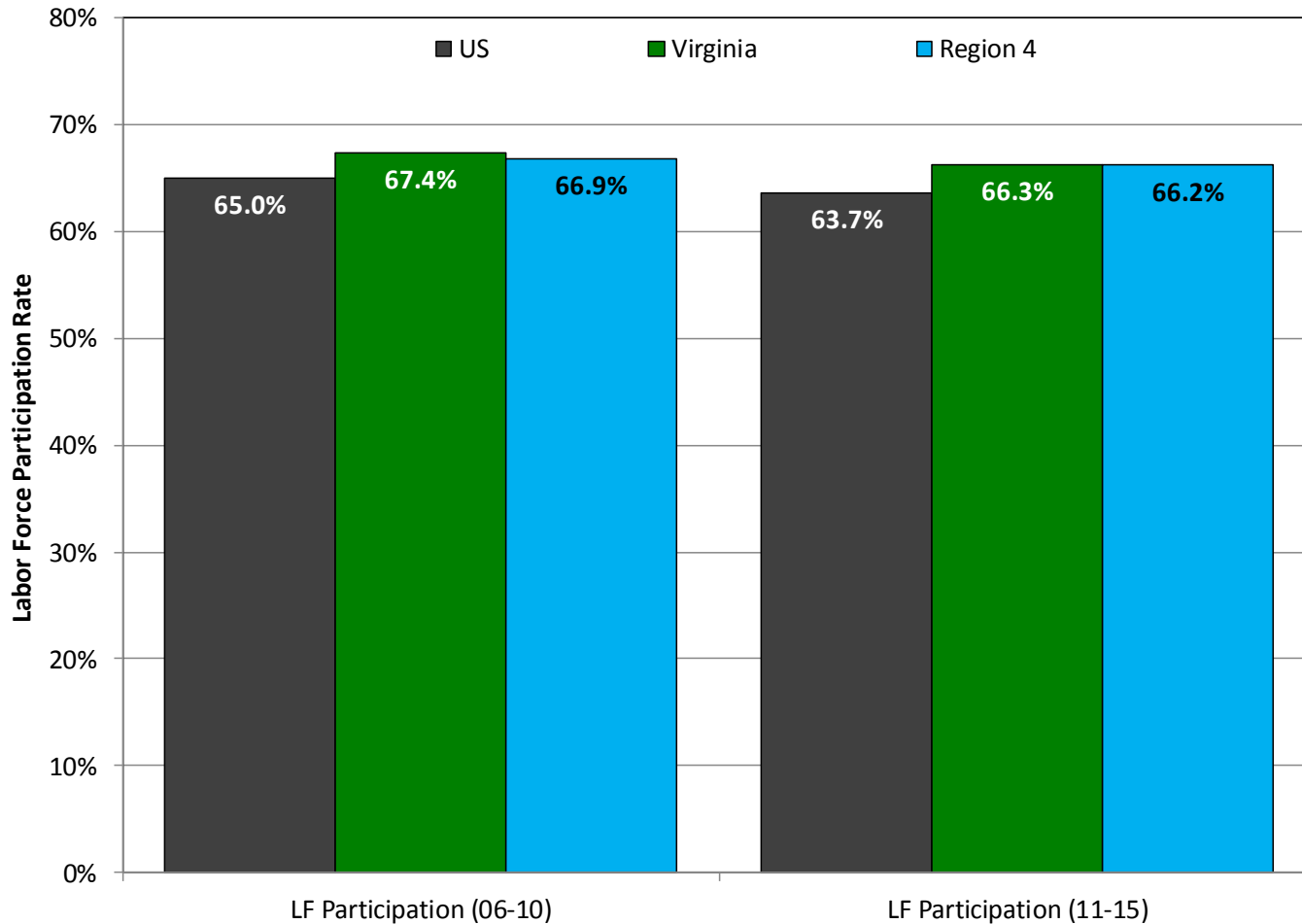
VIRGINIA INITIATIVE FOR
**GROWTH &
OPPORTUNITY**
IN EACH REGION

Labor Force



VIRGINIA INITIATIVE FOR
**GROWTH &
OPPORTUNITY**
IN EACH REGION

Labor Force Participation Rate



Source: US Census Bureau, 2006-2010 and 2011-2015 American Community Surveys



Labor Force Participation Rate

Labor Force Participation Rate: Region 4

	LF Participation (06-10)	LF Participation (11-15)
United States	65.0%	63.7%
Virginia	67.4%	66.3%
Region 4	66.9%	66.2%
Charles City	62.8%	59.8%
Chesterfield	70.5%	69.3%
Dinwiddie	61.9%	61.6%
Goochland	45.3%	60.4%
Greensville	46.5%	35.8%
Hanover	70.0%	68.2%
Henrico	71.1%	70.2%
New Kent	67.2%	67.0%
Powhatan	47.8%	59.6%
Prince George	61.8%	57.9%
Surry	64.5%	63.0%
Sussex	57.6%	26.9%
Colonial Heights city	62.3%	61.1%
Emporia city	57.4%	56.9%
Hopewell city	60.3%	60.6%
Petersburg city	59.3%	57.8%
Richmond city	65.2%	65.5%

Source: US Census Bureau, 2006-2010 and 2011-2015 American Community Surveys

Commuting (Inflow/Outflow)

Inflow/Outflow Job Counts in 2014



■	137,498 - Employed in Selection Area, Live Outside
■	93,978 - Live in Selection Area, Employed Outside
■	428,384 - Employed and Live in Selection Area

Inflow/Outflow Job Counts (Primary Jobs): Region 4

	2014	
	Count	Share
Employed in the Selection Area	565,882	100.00%
Employed in the Selection Area but Living Outside	137,498	24.30%
Employed and Living in the Selection Area	428,384	75.70%
Living in the Selection Area	522,362	100.00%
Living in the Selection Area but Employed Outside	93,978	18.00%
Living and Employed in the Selection Area	428,384	82.00%

Source: US Census Bureau, Longitudinal Employer-Household Dynamics OnTheMap, 2014



Commuting (Inflow/Outflow)

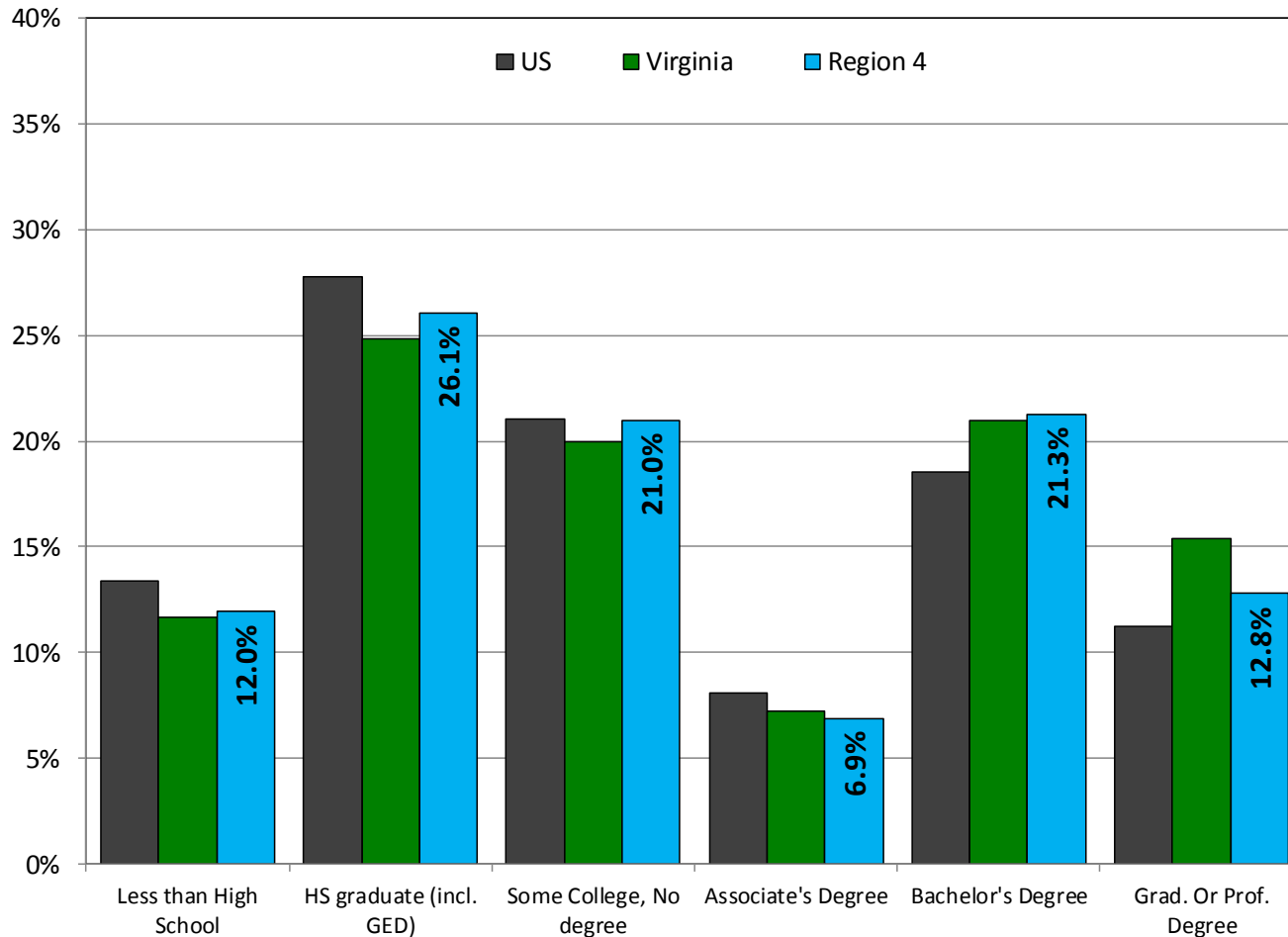
Commuting Patterns: Region 4

	Employed in Selection Area	Employed in the Selection Area but Living Outside		Employed and Living in the Selection Area		Living in the Selection Area	Living in the Selection Area but Employed Outside		Living and Employed in the Selection Area	
Virginia	3,313,939	286,033	8.6%	3,027,906	91.4%	3,377,666	349,760	10.4%	3,027,906	89.6%
Region 4	565,882	137,498	24.3%	428,384	75.7%	522,362	93,978	18.0%	428,384	82.0%
Charles City	1,197	844	70.5%	353	29.5%	3,104	2,751	88.6%	353	11.4%
Chesterfield	117,528	69,648	59.3%	47,880	40.7%	149,306	101,426	67.9%	47,880	32.1%
Dinwiddie	6,232	4,513	72.4%	1,719	27.6%	11,742	10,023	85.4%	1,719	14.6%
Goochland	15,756	14,275	90.6%	1,481	9.4%	9,261	7,780	84.0%	1,481	16.0%
Greensville	3,022	2,454	81.2%	568	18.8%	3,971	3,403	85.7%	568	14.3%
Hanover	46,090	34,265	74.3%	11,825	25.7%	49,061	37,236	75.9%	11,825	24.1%
Henrico	174,163	118,113	67.8%	56,050	32.2%	140,752	84,702	60.2%	56,050	39.8%
New Kent	3,642	2,646	72.7%	996	27.3%	8,492	7,496	88.3%	996	11.7%
Powhatan	5,933	4,007	67.5%	1,926	32.5%	12,635	10,709	84.8%	1,926	15.2%
Prince George	10,082	8,149	80.8%	1,933	19.2%	12,574	10,641	84.6%	1,933	15.4%
Surry	2,352	1,835	78.0%	517	22.0%	2,719	2,202	81.0%	517	19.0%
Sussex	3,398	2,517	74.1%	881	25.9%	4,283	3,402	79.4%	881	20.6%
Colonial Heights city	8,850	7,885	89.1%	965	10.9%	7,454	6,489	87.1%	965	12.9%
Emporia city	3,999	3,229	80.7%	770	19.3%	2,353	1,583	67.3%	770	32.7%
Hopewell city	7,639	6,304	82.5%	1,335	17.5%	8,734	7,399	84.7%	1,335	15.3%
Petersburg city	11,979	9,640	80.5%	2,339	19.5%	13,123	10,784	82.2%	2,339	17.8%
Richmond city	144,020	112,786	78.3%	31,234	21.7%	82,798	51,564	62.3%	31,234	37.7%

Source: US Census Bureau, Longitudinal Employer-Household Dynamics OnTheMap, 2014



Educational Attainment



Source: US Census Bureau, 2011-2015 American Community Survey



Educational Attainment

Educational Attainment: Region 4

	2006-2010						2011-2015					
	Less than High School	HS graduate (incl. GED)	Some College, No degree	Associate's Degree	Bachelor's Degree	Grad. Or Prof. Degree	Less than High School	HS graduate (incl. GED)	Some College, No degree	Associate's Degree	Bachelor's Degree	Grad. Or Prof. Degree
United States	14.9%	29.0%	20.6%	7.5%	17.6%	10.3%	13.3%	27.8%	21.1%	8.1%	18.5%	11.2%
Virginia	13.9%	26.0%	19.6%	6.7%	19.9%	13.9%	11.7%	24.8%	19.9%	7.3%	21.0%	15.4%
Region 4	14.5%	27.1%	20.8%	6.0%	20.3%	11.3%	12.0%	26.1%	21.0%	6.9%	21.3%	12.8%
Charles City	25.1%	40.9%	19.3%	3.8%	6.3%	4.6%	24.4%	39.3%	18.1%	5.1%	7.2%	5.8%
Chesterfield	10.6%	24.8%	22.1%	6.8%	23.5%	12.2%	9.0%	24.1%	22.1%	7.9%	22.9%	14.0%
Dinwiddie	22.9%	39.5%	18.2%	6.4%	10.0%	3.1%	18.2%	39.7%	19.5%	7.3%	9.7%	5.6%
Goochland	20.7%	26.6%	17.8%	4.2%	17.9%	12.8%	10.0%	26.9%	18.1%	7.7%	24.3%	13.0%
Greensville	30.4%	45.3%	16.4%	2.5%	3.9%	1.5%	23.8%	42.3%	20.2%	5.1%	4.6%	4.0%
Hanover	8.9%	28.8%	22.8%	6.6%	22.1%	10.9%	7.8%	27.6%	20.9%	8.0%	23.6%	12.1%
Henrico	10.9%	23.2%	20.9%	6.1%	24.7%	14.2%	9.3%	22.8%	20.7%	6.5%	25.2%	15.5%
New Kent	13.6%	35.3%	20.4%	8.0%	16.7%	5.9%	9.9%	33.0%	24.7%	7.8%	16.7%	7.8%
Powhatan	20.7%	31.5%	19.8%	6.0%	14.0%	8.0%	10.9%	28.6%	24.7%	8.0%	19.3%	8.6%
Prince George	13.9%	37.1%	25.7%	6.2%	11.0%	6.2%	12.3%	33.4%	24.2%	8.7%	14.0%	7.3%
Surry	21.3%	39.4%	20.2%	5.6%	7.8%	5.8%	18.4%	29.2%	24.2%	7.0%	15.4%	5.8%
Sussex	32.2%	38.5%	15.3%	4.0%	6.3%	3.7%	29.3%	40.3%	17.5%	3.3%	5.5%	4.1%
Colonial Heights city	11.9%	38.1%	24.4%	5.6%	13.4%	6.6%	12.1%	35.2%	22.9%	8.1%	13.7%	8.0%
Emporia city	28.4%	36.9%	15.8%	3.5%	7.5%	7.9%	25.3%	32.6%	16.1%	7.9%	10.5%	7.6%
Hopewell city	23.9%	38.8%	21.6%	4.8%	7.2%	3.7%	19.1%	38.3%	23.3%	7.0%	8.1%	4.2%
Petersburg city	28.1%	33.5%	18.8%	4.4%	10.7%	4.5%	22.1%	34.0%	23.0%	5.0%	9.2%	6.7%
Richmond city	19.9%	24.3%	18.3%	5.0%	19.6%	13.0%	16.8%	23.0%	18.8%	5.3%	21.9%	14.2%

Source: US Census Bureau, 2006-2010 and 2011-2015 American Community Surveys



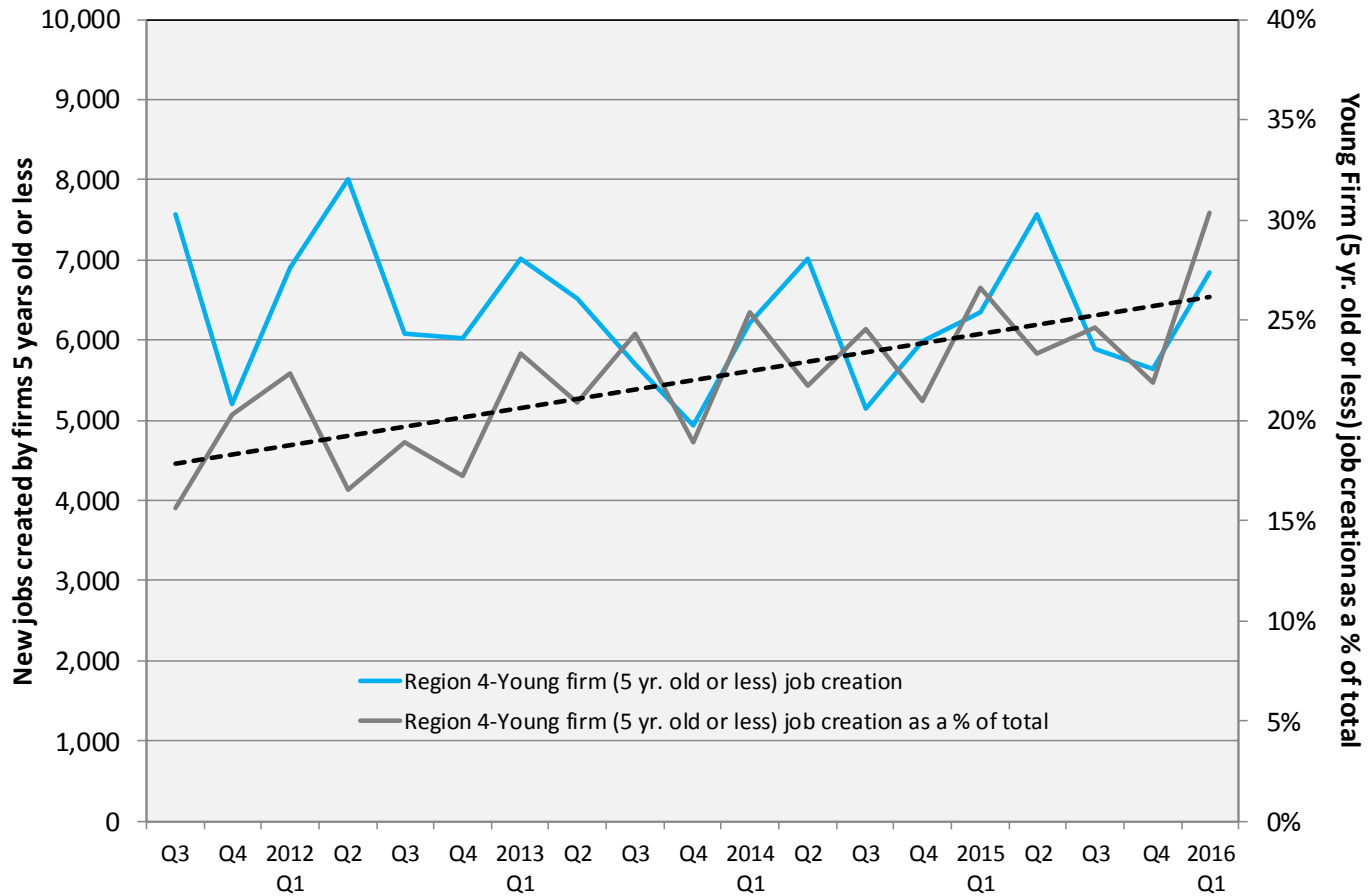
VIRGINIA INITIATIVE FOR
**GROWTH &
OPPORTUNITY**
IN EACH REGION

Firm Growth



VIRGINIA INITIATIVE FOR
**GROWTH &
 OPPORTUNITY**
 IN EACH REGION

Jobs Created by Young Companies (5 years old or less)



Source: US Census Bureau, Longitudinal Employer-Household Dynamics, Quarterly Workforce Indicators



Jobs Created by Young Companies (5 years old or less)

Region 4: Young firm (5 yrs old or less) job creation

	2012 Average	2015 Average	2012 as a % of Total	2015 as a % of Total
US	1,542,135	1,674,953	25.2%	26.7%
Virginia	42,118	39,288	19.4%	26.2%
Region 4	6,750	6,358	18.4%	24.0%
Charles City	34	33	39.7%	45.4%
Chesterfield	1,527	1,568	17.9%	23.6%
Dinwiddie	58	51	9.2%	10.4%
Goochland	116	83	16.6%	15.4%
Greensville	46	20	42.3%	22.4%
Hanover	690	596	20.4%	23.9%
Henrico	2,083	2,041	17.8%	24.1%
New Kent	77	69	23.3%	33.2%
Powhatan	115	99	14.4%	29.4%
Prince George	148	83	21.7%	21.0%
Surry	5	25	5.5%	17.8%
Sussex	39	40	29.8%	32.4%
Colonial Heights city	110	99	17.2%	24.9%
Emporia city	33	48	12.8%	33.5%
Hopewell city	57	38	12.4%	13.5%
Petersburg city	100	102	19.8%	20.1%
Richmond city	1,514	1,364	19.9%	26.5%

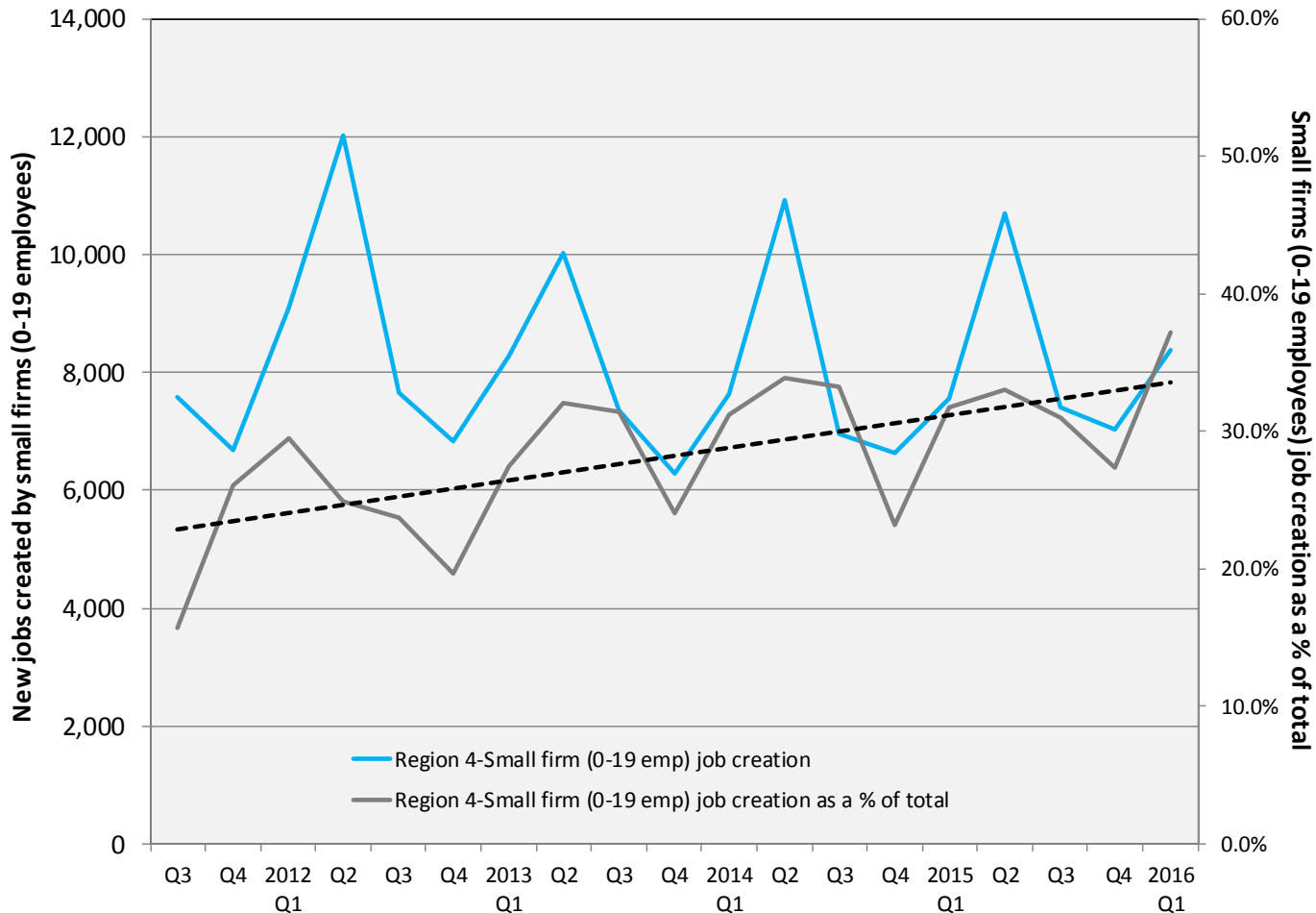
Source: US Census Bureau, LEHD, QWI



VIRGINIA INITIATIVE FOR
**GROWTH &
 OPPORTUNITY**
 IN EACH REGION

Jobs Created by Small Companies

(less than 20 employees)



Source: US Census Bureau, Longitudinal Employer-Household Dynamics, Quarterly Workforce Indicators



Jobs Created by Small Companies

(less than 20 employees)

Region 4: Small firm (0-19 Emp.) job creation

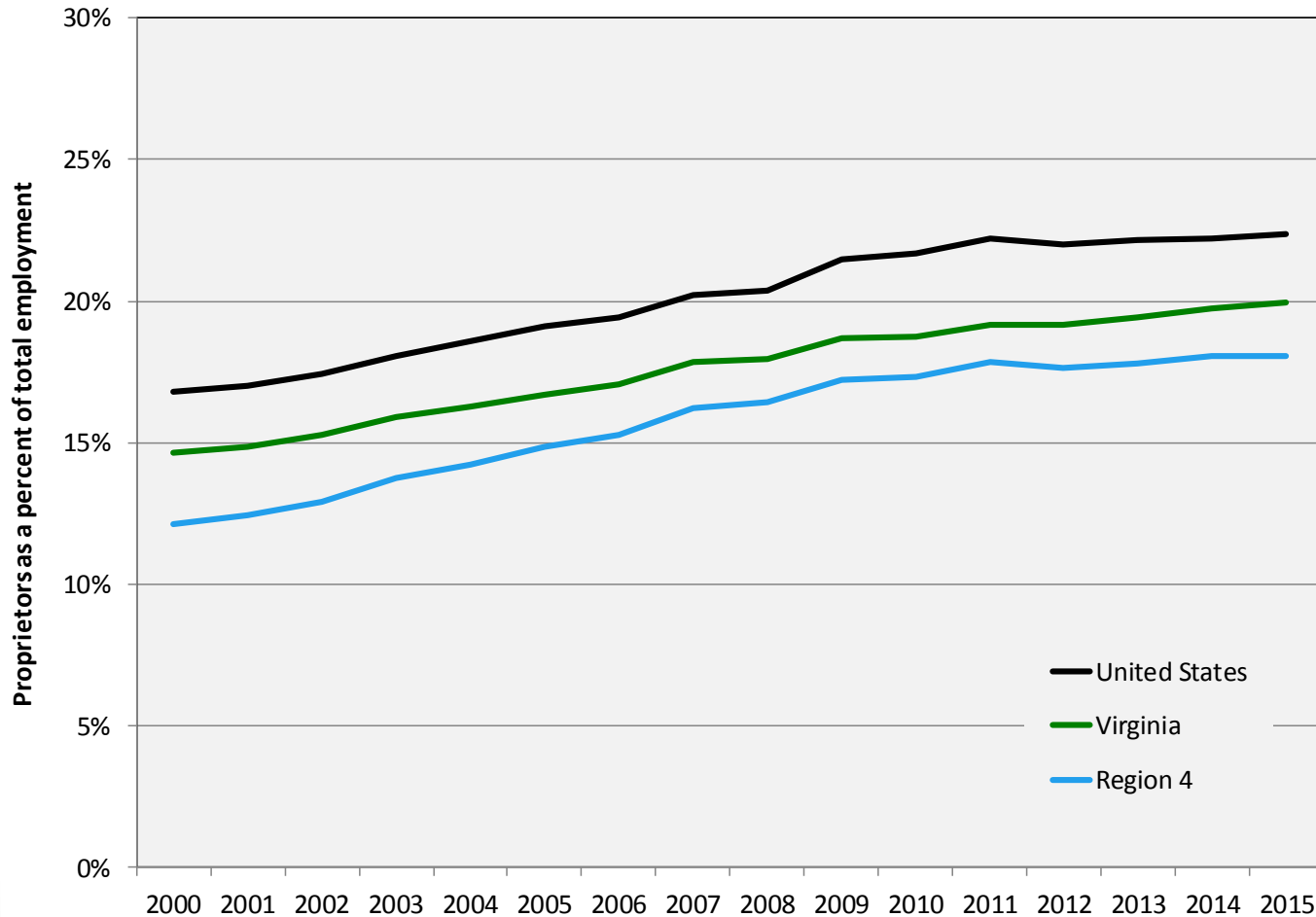
	2012 Average	2015 Average	2012 as a % of Total	2015 as a % of Total
US	2,203,129	2,268,500	36.0%	36.2%
Virginia	58,797	54,683	27.1%	36.4%
Region 4	8,907	8,177	24.3%	30.9%
Charles City	57	55	66.4%	75.9%
Chesterfield	2,167	1,911	25.3%	28.7%
Dinwiddie	111	96	17.5%	19.7%
Goochland	190	156	27.1%	28.9%
Greensville	34	26	30.9%	29.1%
Hanover	998	878	29.5%	35.2%
Henrico	2,440	2,331	20.9%	27.5%
New Kent	119	121	36.0%	58.0%
Powhatan	216	206	27.0%	61.2%
Prince George	126	96	18.4%	24.4%
Surry	19	37	21.4%	26.6%
Sussex	77	50	58.6%	40.1%
Colonial Heights city	164	144	25.7%	36.0%
Emporia city	39	57	15.3%	39.4%
Hopewell city	119	89	26.0%	31.9%
Petersburg city	177	197	35.2%	38.8%
Richmond city	1,859	1,730	24.5%	33.6%

Source: US Census Bureau, LEHD, QWI



VIRGINIA INITIATIVE FOR
**GROWTH &
OPPORTUNITY**
IN EACH REGION

Sole Proprietorships as a percent of total employment



Source: US Bureau of Economic Analysis



Sole Proprietorships

Proprietors as a percent of total employment: Region 4

	2000 Proprietors	2010 Proprietors	2015 Proprietors	Annual Growth (00-10)	Annual Growth (10-15)	Proprietors as a % of total employment
United States	27,760,800	37,508,700	42,561,400	3.1%	2.1%	22.4%
Virginia	644,573	890,602	1,008,978	3.3%	2.1%	19.9%
Region 4	83,605	128,123	147,080	4.4%	2.3%	18.0%
Charles City	630	530	593	-1.7%	1.9%	25.5%
Chesterfield	21,930	35,342	39,580	4.9%	1.9%	21.9%
Dinwiddie, Colonial Heights + Petersburg, VA*	5,261	7,024	7,865	2.9%	1.9%	18.6%
Goochland	5,545	3,505	3,657	-4.5%	0.7%	18.7%
Greensville + Emporia, VA*	841	1,044	1,305	2.2%	3.8%	13.8%
Hanover	7,665	12,767	14,071	5.2%	1.6%	20.7%
Henrico	17,443	38,114	43,401	8.1%	2.2%	17.8%
New Kent	1,143	2,565	3,036	8.4%	2.8%	40.4%
Powhatan	4,534	3,284	3,467	-3.2%	0.9%	31.2%
Prince George + Hopewell, VA*	2,738	3,318	3,684	1.9%	1.8%	10.1%
Richmond city	14,654	19,207	24,933	2.7%	4.4%	13.4%
Surry	550	618	599	1.2%	-0.5%	18.3%
Sussex	671	805	889	1.8%	1.7%	17.9%

Source: US Bureau of Economic Analysis



VIRGINIA INITIATIVE FOR
**GROWTH &
OPPORTUNITY**
IN EACH REGION

Thank You

Terry L. Clower Ph.D. – tclower@gmu.edu

Mark C. White Ph.D. – mwhite@gmu.edu

Spencer A. Shanholtz – sshanhol@gmu.edu



cra.gmu.edu

[@GMU_CRA](#)