

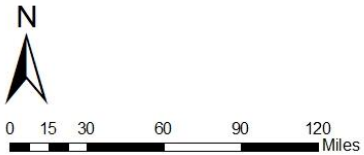
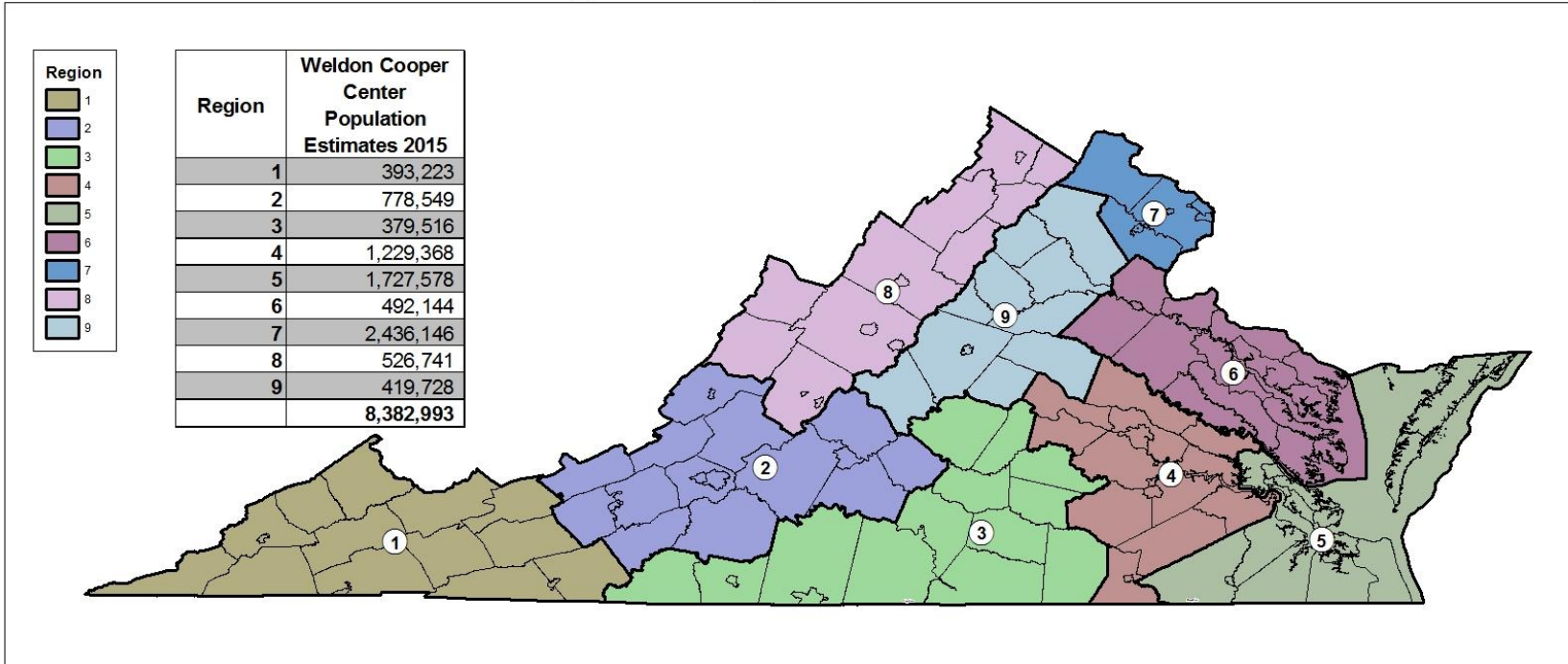


VIRGINIA INITIATIVE FOR
**GROWTH &
OPPORTUNITY**
IN EACH REGION

REGIONAL BASELINE MEASURES
REGION 5



GO Virginia Regional Boundaries



Source: US Census, VA PDC



12/5/2016



VIRGINIA INITIATIVE FOR
**GROWTH &
OPPORTUNITY**
IN EACH REGION

Region 5

Counties of:

- Accomack, Isle of Wight, James City, Northampton, Southampton, York

Cities of:

- Chesapeake, Franklin, Hampton, Newport News, Norfolk, Poquoson, Portsmouth, Suffolk, Virginia Beach, Williamsburg



VIRGINIA INITIATIVE FOR
**GROWTH &
OPPORTUNITY**
IN EACH REGION

Data Included

- **Population**
 - Population Trends
- **Income and Wealth**
 - Per Capita Income
 - Percent of Population in Poverty
- **Employment**
 - Total Employment
 - Unemployment Rate
- **Industry**
 - Employment Trends by Industry Sector
 - Relative Concentration (Location Quotients) by Sector
 - Wages by Industry Sector



VIRGINIA INITIATIVE FOR
**GROWTH &
OPPORTUNITY**
IN EACH REGION

Data Included

- **Labor Force**
 - Labor Force Participation Rate
 - Commuting inflow/outflow
 - Educational Attainment
- **Firm Growth**
 - Jobs Created by Young Companies (5 years old or less)
 - Jobs Created by Small Companies (less than 20 employees)
 - Sole Proprietorships



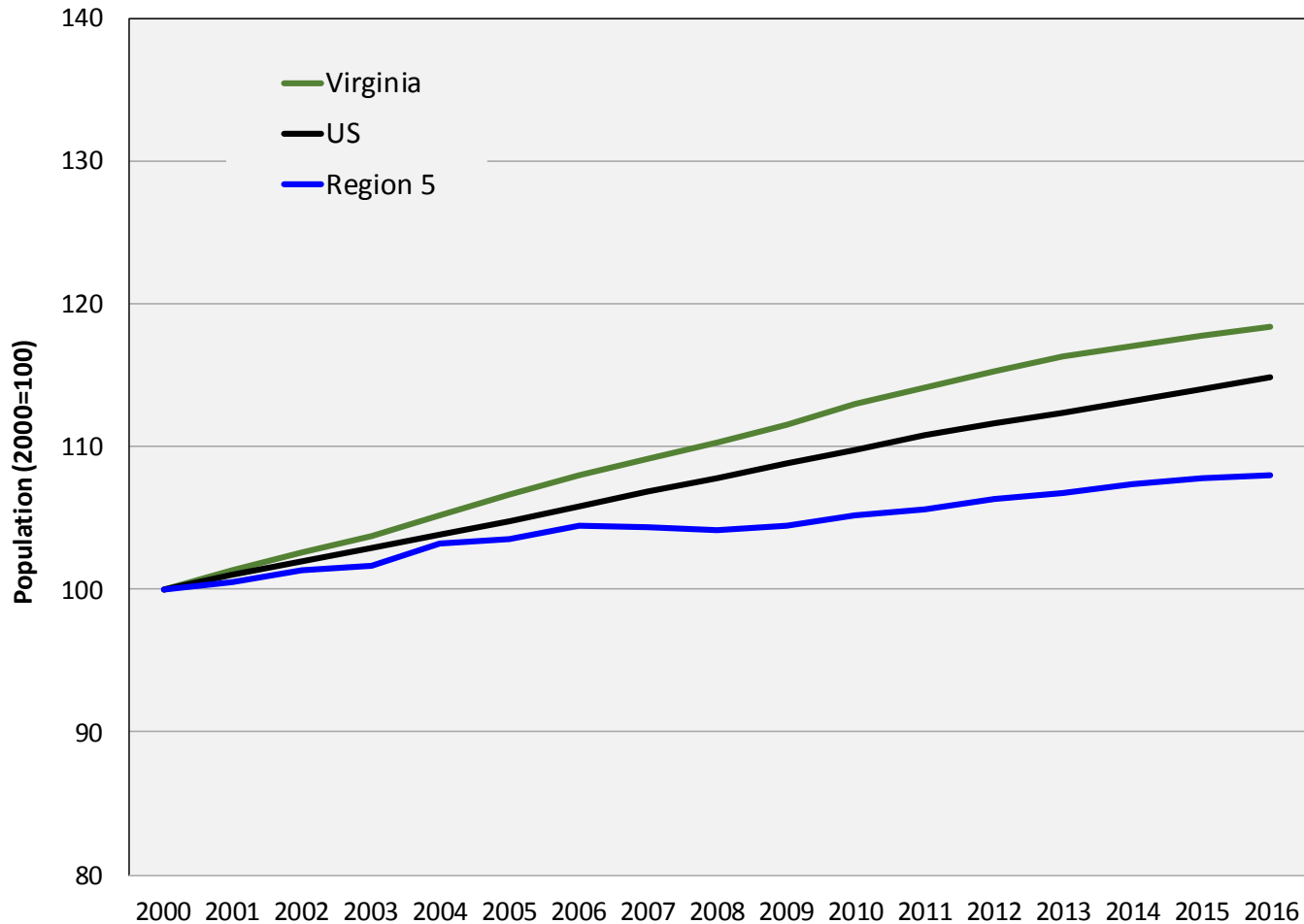
VIRGINIA INITIATIVE FOR
**GROWTH &
OPPORTUNITY**
IN EACH REGION

Population



VIRGINIA INITIATIVE FOR
**GROWTH &
OPPORTUNITY**
IN EACH REGION

Population Trends



Source: US Census Bureau, Population Estimates Programs



Population Trends

Population Trends: Region 5

	2000	2010	2016	Annual Growth (00-10)	Annual Growth (10-16)
United States	281,424,600	308,745,538	323,127,513	0.9%	0.8%
Virginia	7,105,817	8,025,773	8,411,808	1.2%	0.8%
Region 5	1,589,071	1,671,025	1,715,073	0.5%	0.4%
Accomack	38,215	33,164	32,947	-1.4%	-0.1%
Isle of Wight	29,849	35,315	36,596	1.7%	0.6%
James City	48,536	67,734	74,404	3.4%	1.6%
Northampton	13,025	12,388	12,139	-0.5%	-0.3%
Southampton	17,493	18,628	18,057	0.6%	-0.5%
York	57,119	65,208	67,976	1.3%	0.7%
Chesapeake city	200,224	223,619	237,940	1.1%	1.0%
Franklin city	8,269	8,593	8,306	0.4%	-0.6%
Hampton city	146,054	137,323	135,410	-0.6%	-0.2%
Newport News city	180,236	181,011	181,825	0.0%	0.1%
Norfolk city	234,986	242,878	245,115	0.3%	0.2%
Poquoson city	11,582	12,147	12,017	0.5%	-0.2%
Portsmouth city	100,337	95,472	95,252	-0.5%	0.0%
Suffolk city	64,216	84,855	89,273	2.8%	0.8%
Virginia Beach city	426,918	438,985	452,602	0.3%	0.5%
Williamsburg city	12,012	13,705	15,214	1.3%	1.8%

Source: US Census Bureau, Population Estimates Programs



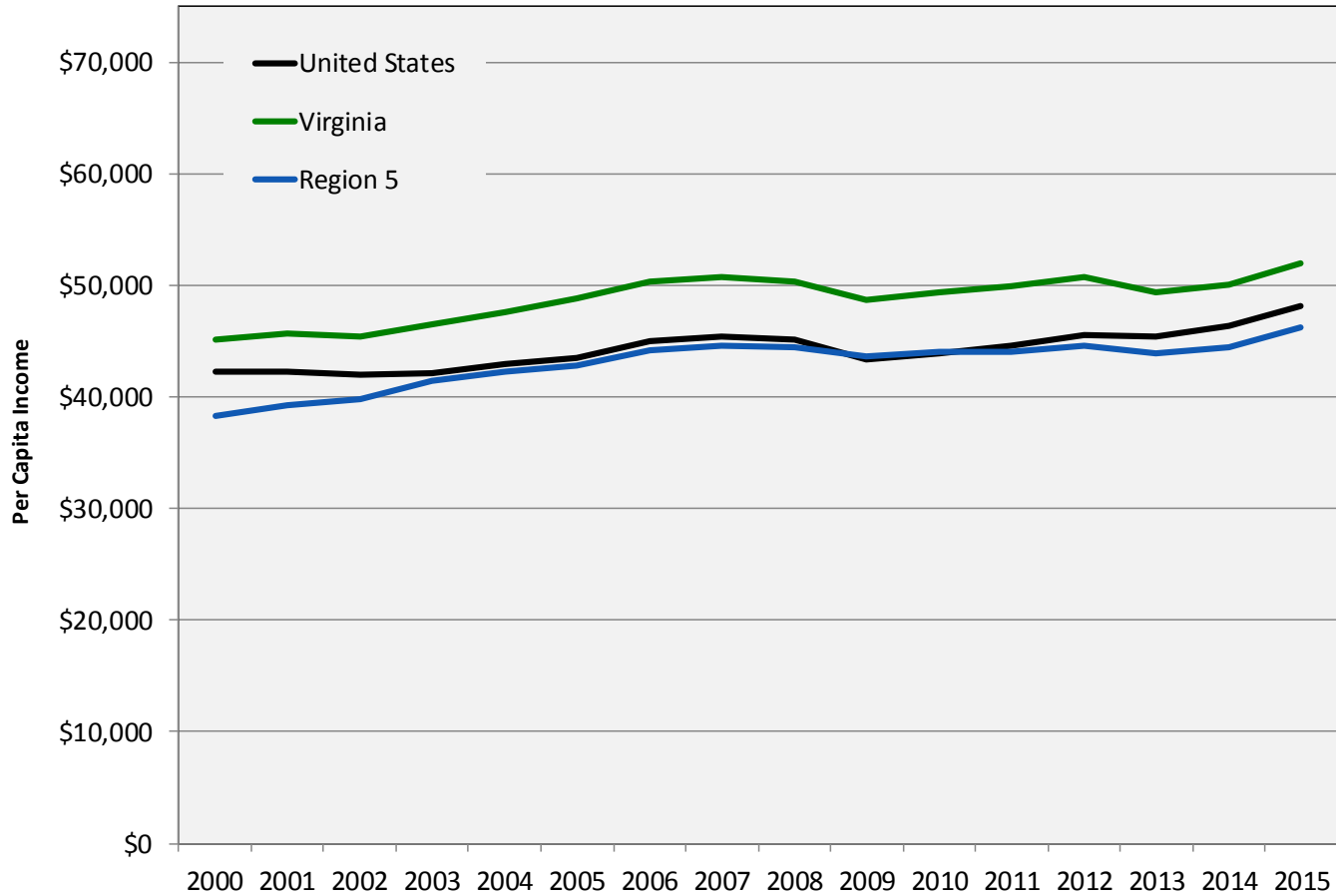
VIRGINIA INITIATIVE FOR
**GROWTH &
OPPORTUNITY**
IN EACH REGION

Income and Wealth



VIRGINIA INITIATIVE FOR
**GROWTH &
OPPORTUNITY**
IN EACH REGION

Per Capita Income



Source: US Bureau of Economic Analysis, PCI adjusted for 2015 dollars



Per Capita Income

Per Capita Income: Region 5

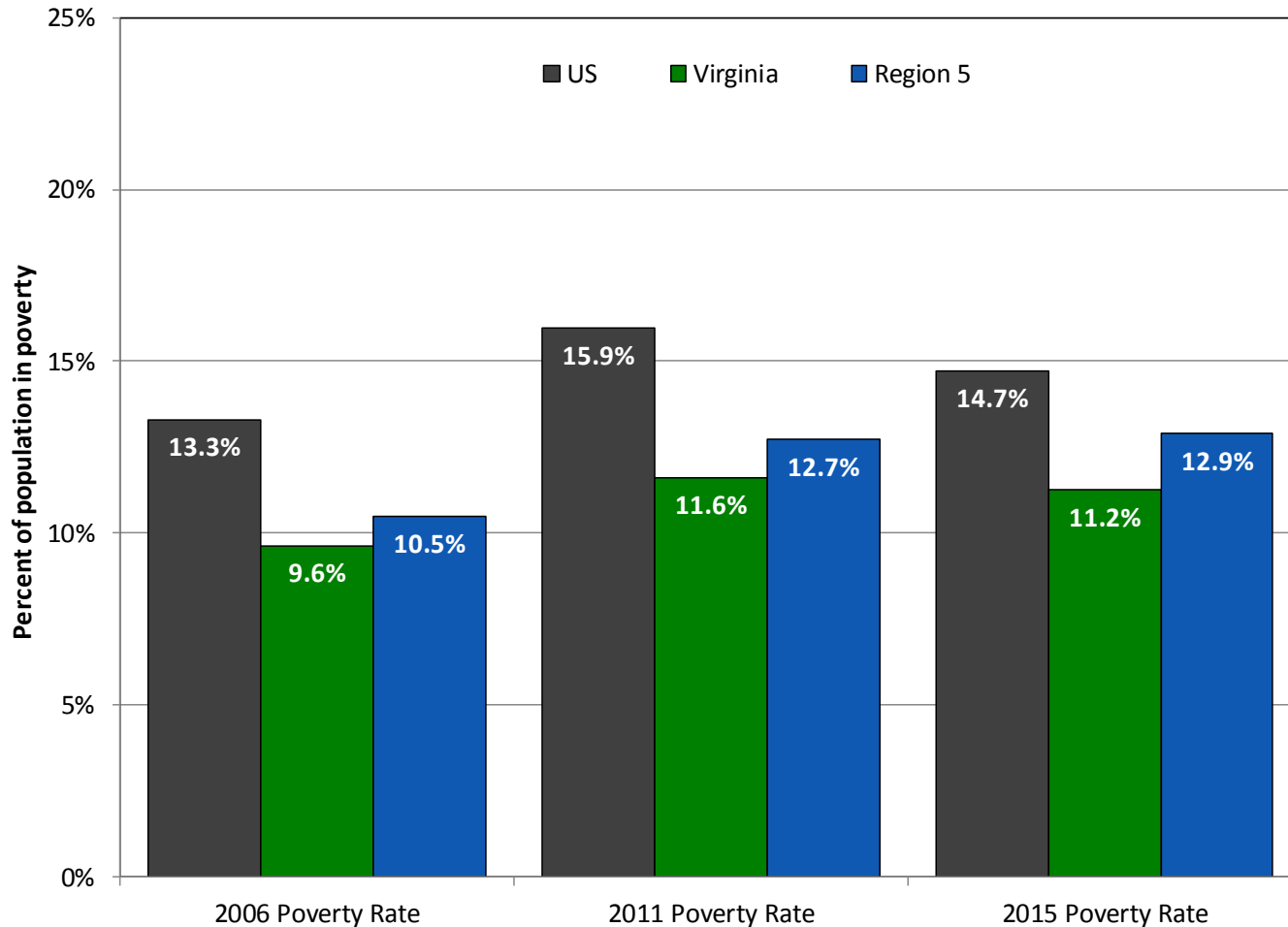
	2000	2010	2015	Annual Growth (00-10)	Annual Growth (10-15)
United States	\$42,231	\$43,902	\$48,112	0.4%	1.5%
Virginia	\$45,144	\$49,421	\$52,052	0.9%	0.9%
Region 5	\$38,351	\$44,036	\$46,192	1.4%	0.8%
Accomack	\$27,325	\$36,744	\$38,683	3.0%	0.9%
Isle of Wight	\$38,793	\$49,382	\$50,643	2.4%	0.4%
James City + Williamsburg, VA*	\$50,645	\$56,176	\$58,504	1.0%	0.7%
Northampton	\$32,027	\$35,224	\$37,804	1.0%	1.2%
Southampton + Franklin, VA*	\$32,895	\$32,111	\$34,987	-0.2%	1.4%
York + Poquoson, VA*	\$43,814	\$52,745	\$55,111	1.9%	0.7%
Chesapeake city	\$38,907	\$45,857	\$46,769	1.7%	0.3%
Hampton city	\$35,484	\$39,122	\$40,759	1.0%	0.7%
Newport News city	\$32,186	\$38,323	\$40,453	1.8%	0.9%
Norfolk city	\$34,758	\$37,606	\$38,676	0.8%	0.5%
Portsmouth city	\$30,571	\$37,824	\$39,301	2.2%	0.6%
Suffolk city	\$36,486	\$46,035	\$47,533	2.4%	0.5%
Virginia Beach city	\$44,616	\$48,845	\$52,235	0.9%	1.1%

Source: US Bureau of Economic Analysis, PCI adjusted for 2015 dollars



VIRGINIA INITIATIVE FOR
**GROWTH &
OPPORTUNITY**
IN EACH REGION

Percent of Population in Poverty



Source: US Census Bureau, Small Area Income and Poverty Estimates



Percent of Population in Poverty

Poverty Trends: Region 5

	2006 Poverty Rate	2011 Poverty Rate	2015 Poverty Rate
United States	13.3%	15.9%	14.7%
Virginia	9.6%	11.6%	11.2%
Region 5	10.5%	12.7%	12.9%
Accomack	15.4%	19.3%	20.4%
Isle of Wight	8.2%	11.2%	9.9%
James City	6.4%	7.4%	7.1%
Northampton	18.9%	22.7%	20.5%
Southampton	15.4%	16.0%	15.2%
York	4.3%	5.4%	5.3%
Chesapeake city	6.8%	9.3%	9.7%
Franklin city	18.5%	21.8%	19.4%
Hampton city	12.1%	15.3%	15.2%
Newport News city	12.6%	15.5%	16.8%
Norfolk city	17.5%	20.3%	21.5%
Poquoson city	4.9%	5.2%	5.4%
Portsmouth city	14.8%	18.0%	18.6%
Suffolk city	10.7%	12.2%	13.1%
Virginia Beach city	7.2%	8.9%	8.2%
Williamsburg city	20.7%	19.1%	22.0%

Source: US Census Bureau, Small Area Income and Poverty Estimates



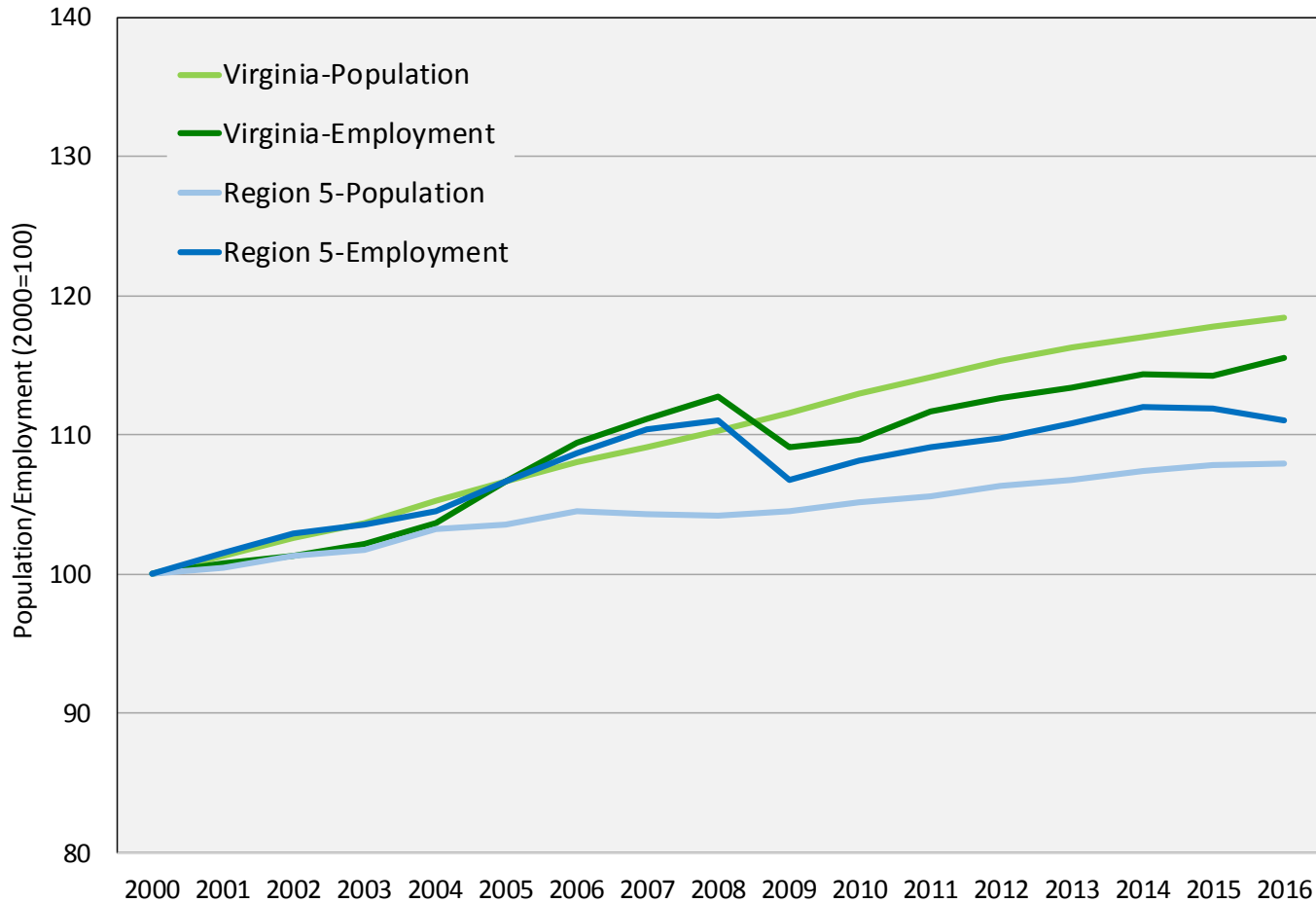
VIRGINIA INITIATIVE FOR
**GROWTH &
OPPORTUNITY**
IN EACH REGION

Employment



VIRGINIA INITIATIVE FOR
**GROWTH &
OPPORTUNITY**
IN EACH REGION

Total Employment



Source: US Census Bureau Population Estimates, US Bureau of Labor Statistics Local Area Unemployment Statistics (2016 preliminary)



Total Employment

Employment Trends: Region 5

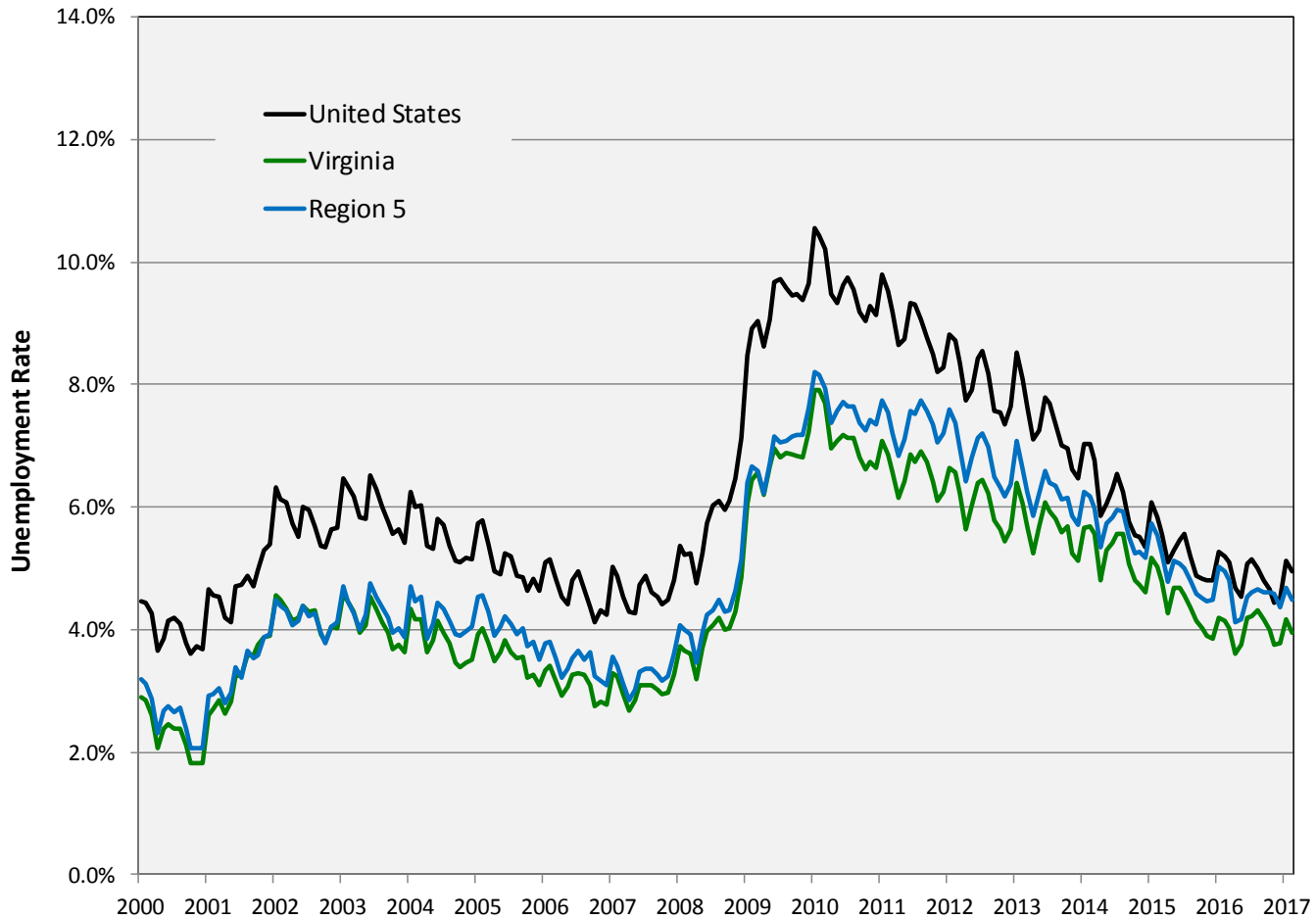
	2000	2010	2016	Annual Growth (00-10)	Annual Growth (10-16)
United States	136,891,000	139,064,000	151,436,000	0.2%	1.4%
Virginia	3,522,865	3,860,386	4,070,260	0.9%	0.9%
Region 5	707,954	765,498	786,346	0.8%	0.4%
Accomack	17,583	15,479	14,957	-1.3%	-0.6%
Isle of Wight	14,583	17,458	17,805	1.8%	0.3%
James City	22,831	30,205	32,655	2.8%	1.3%
Northampton	5,453	5,799	5,551	0.6%	-0.7%
Southampton	7,281	8,679	8,762	1.8%	0.2%
York	26,332	29,377	30,083	1.1%	0.4%
Chesapeake city	95,714	105,173	110,576	0.9%	0.8%
Franklin city	3,456	3,241	3,374	-0.6%	0.7%
Hampton city	62,586	60,687	60,886	-0.3%	0.1%
Newport News city	80,710	83,103	84,689	0.3%	0.3%
Norfolk city	89,931	102,606	104,495	1.3%	0.3%
Poquoson city	5,724	6,007	5,960	0.5%	-0.1%
Portsmouth city	41,486	41,102	41,621	-0.1%	0.2%
Suffolk city	28,586	38,581	39,759	3.0%	0.5%
Virginia Beach city	201,294	212,145	219,060	0.5%	0.5%
Williamsburg city	4,404	5,856	6,114	2.9%	0.7%

Source: US BLS Local Area Unemployment Statistics (2016 preliminary)



VIRGINIA INITIATIVE FOR
**GROWTH &
OPPORTUNITY**
IN EACH REGION

Unemployment Rate



Source: US Bureau of Labor Statistics, Local Area Unemployment Statistics



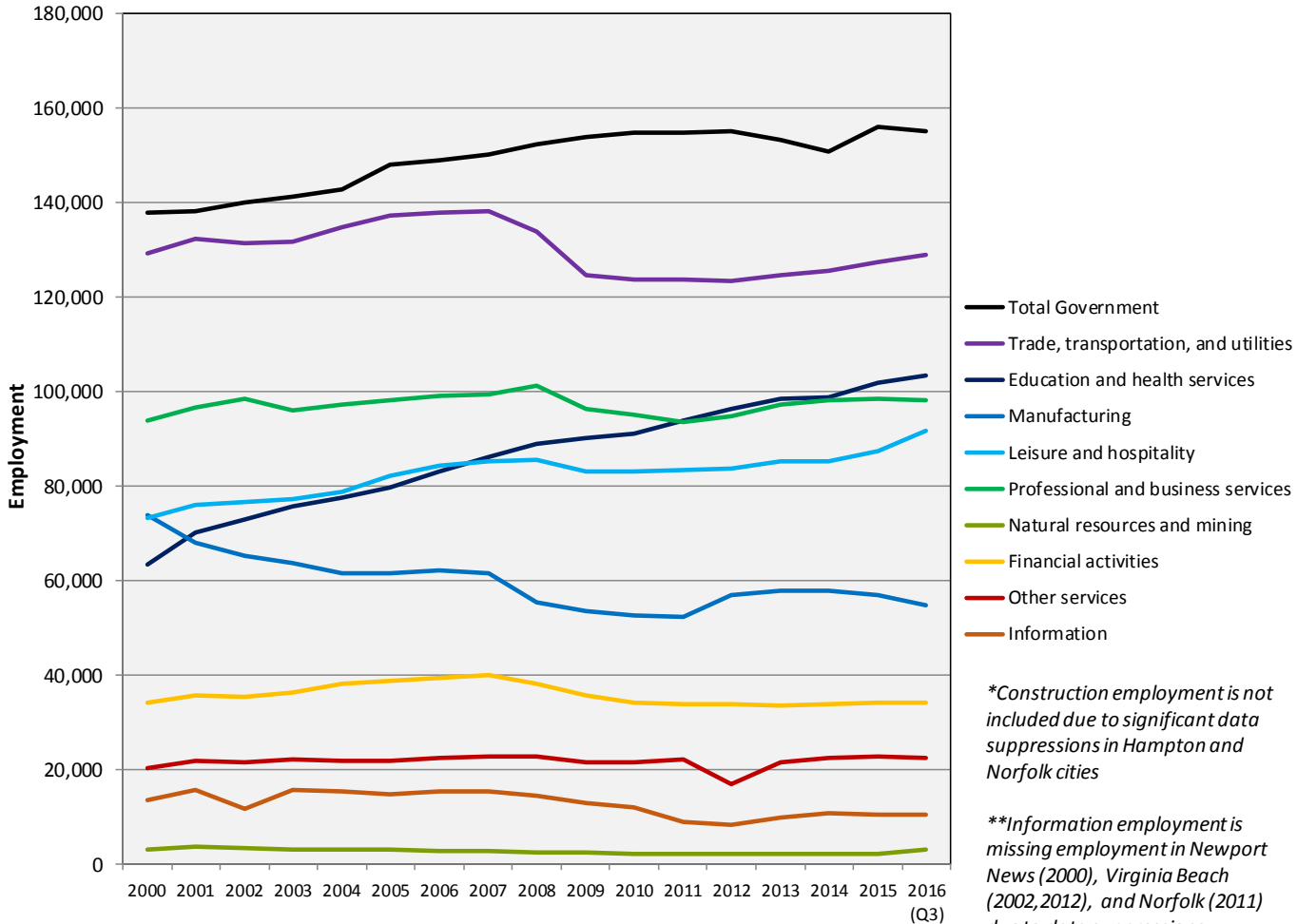
VIRGINIA INITIATIVE FOR
**GROWTH &
OPPORTUNITY**
IN EACH REGION

Industry



VIRGINIA INITIATIVE FOR
**GROWTH &
 OPPORTUNITY**
 IN EACH REGION

Employment Trends by Industry Sector



Source: US Bureau of Labor Statistics, Quarterly Census of Employment and Wages



Employment Trends by Industry Sector

Region 5: Industry Sectors, 2015*

Sector	Employment#	LQ	Region 5 Avg Wage	US Avg Wage
Trade, transportation, and utilities	127,493	0.90	\$35,415	\$44,321
Education and health services	101,844	0.91	\$45,174	\$47,383
Professional and business services	98,616	0.95	\$56,281	\$69,270
Leisure and hospitality	87,441	1.10	\$17,343	\$21,807
Local government	80,662	1.10	\$41,409	\$47,573
Manufacturing	57,115	0.88	\$60,066	\$64,305
Federal government	56,627	3.89	\$73,404	\$77,900
Financial activities	34,242	0.83	\$59,378	\$87,915
Construction	30,312	0.89	\$47,584	\$57,009
Other services	22,677	1.00	\$28,180	\$35,116
State government	18,632	0.77	\$41,357	\$55,878
Information	10,552	0.73	\$54,775	\$95,098
Natural resources and mining	2,225	0.21	\$32,598	\$58,461

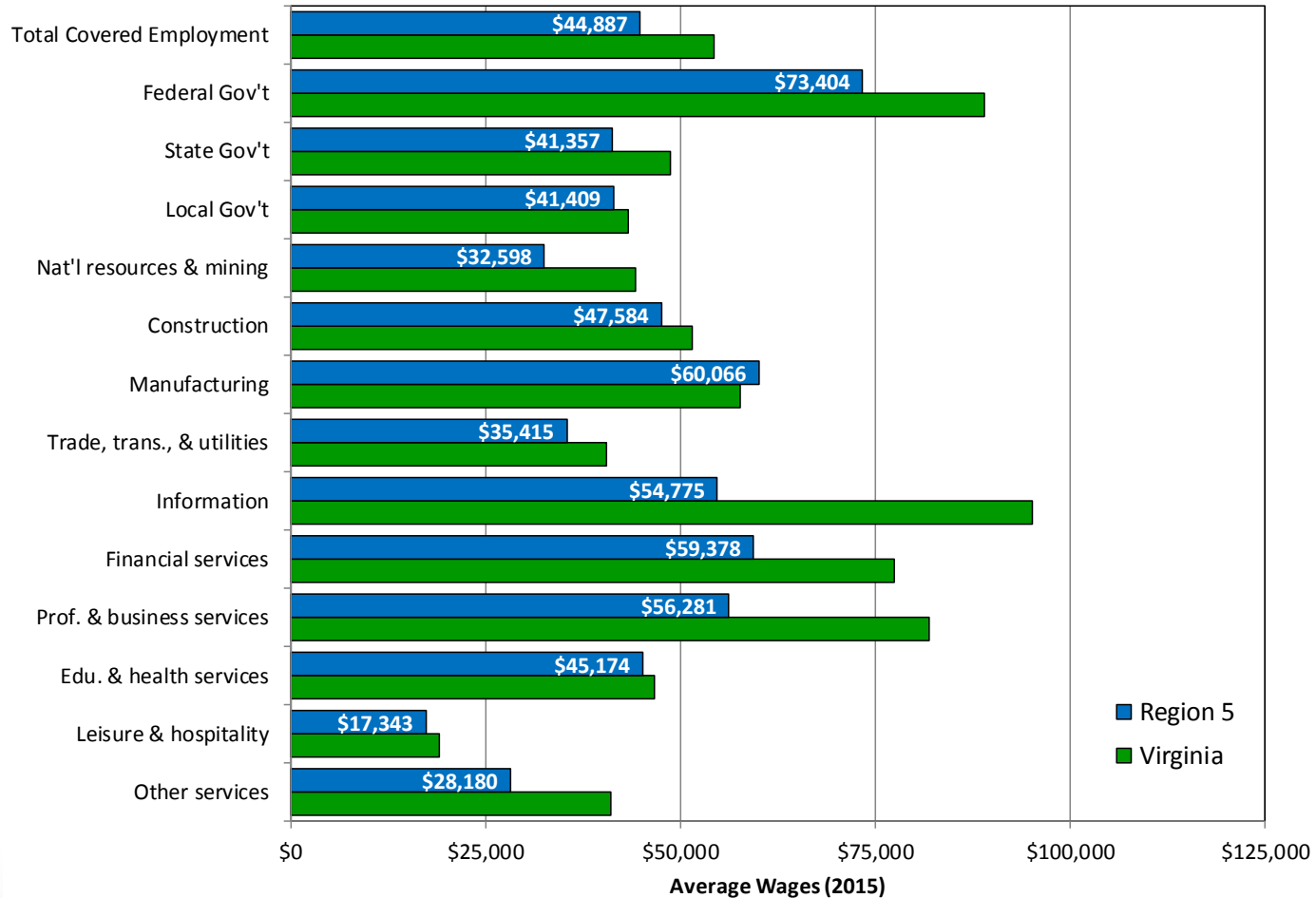
Source: US Bureau of Labor Statistics, Quarterly Census of Employment and Wages

*2015 is the most recently available complete year

#Does not include suppressed employment



Industry Wages by Sector



Source: US Bureau of Labor Statistics, Quarterly Census of Employment and Wages



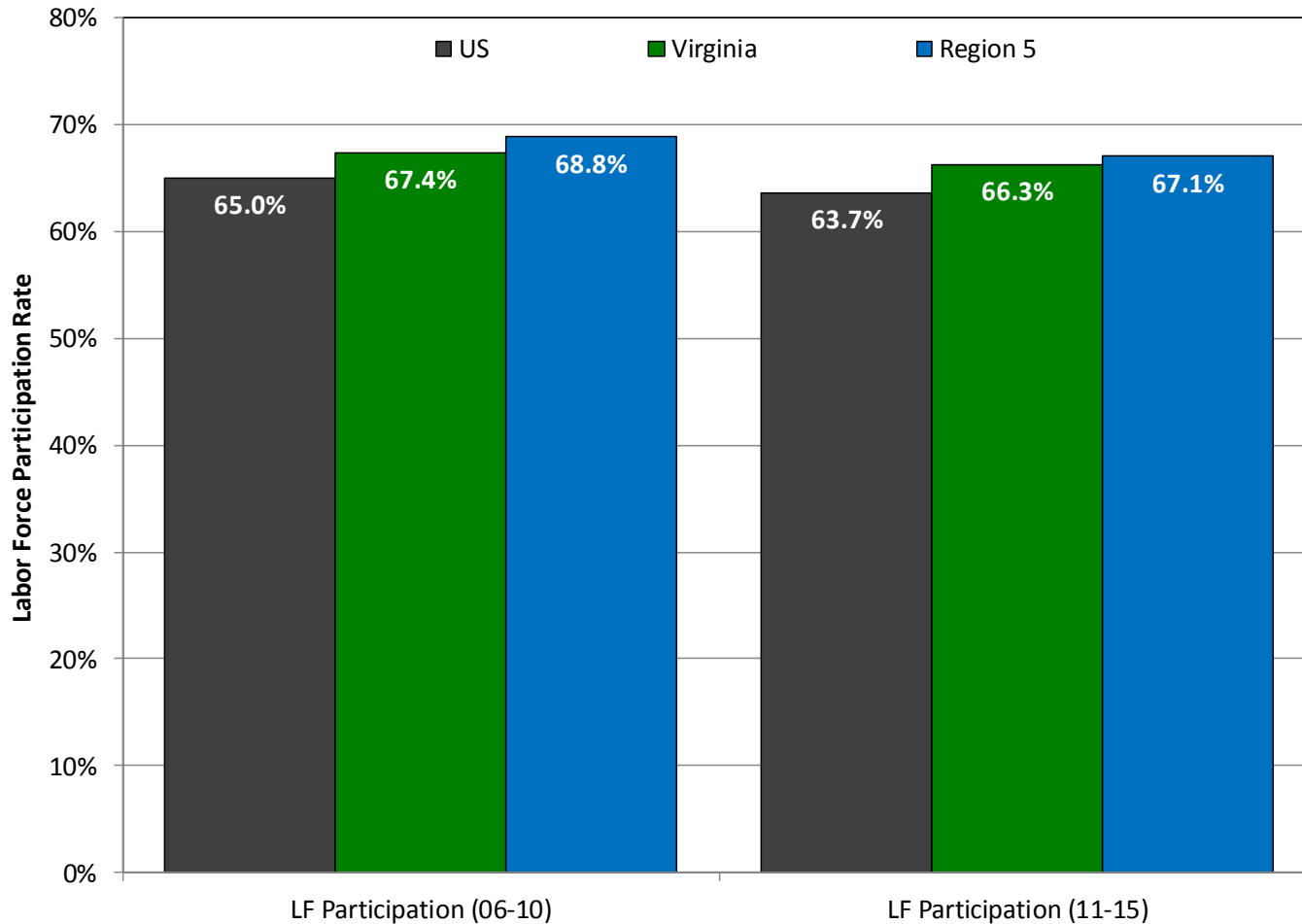
VIRGINIA INITIATIVE FOR
**GROWTH &
OPPORTUNITY**
IN EACH REGION

Labor Force



VIRGINIA INITIATIVE FOR
**GROWTH &
OPPORTUNITY**
IN EACH REGION

Labor Force Participation Rate



Source: US Census Bureau, 2006-2010 and 2011-2015 American Community Surveys



Labor Force Participation Rate

Labor Force Participation Rate: Region 5




	LF Participation (06-10)	LF Participation (11-15)
United States	65.0%	63.7%
Virginia	67.4%	66.3%
Region 5	68.8%	67.1%
Accomack	60.0%	57.5%
Isle of Wight	67.4%	65.6%
James City	61.7%	59.0%
Northampton	58.3%	53.6%
Southampton	59.5%	56.3%
York	69.5%	66.8%
Chesapeake city	70.3%	66.8%
Franklin city	53.8%	60.2%
Hampton city	66.4%	65.4%
Newport News city	70.7%	69.0%
Norfolk city	69.1%	68.7%
Poquoson city	66.9%	64.4%
Portsmouth city	65.3%	64.3%
Suffolk city	67.5%	66.9%
Virginia Beach city	72.6%	70.6%
Williamsburg city	50.8%	49.1%

Source: US Census Bureau, 2006-2010 and 2011-2015 American Community Surveys

Commuting (Inflow/Outflow)

Inflow/Outflow Job Counts in 2014



	105,649 - Employed in Selection Area, Live Outside
	95,958 - Live in Selection Area, Employed Outside
	547,474 - Employed and Live in Selection Area

Inflow/Outflow Job Counts (Primary Jobs): Region 5

	2014	
	Count	Share
Employed in the Selection Area	653,123	100.00%
Employed in the Selection Area but Living Outside	105,649	16.20%
Employed and Living in the Selection Area	547,474	83.80%
Living in the Selection Area	643,432	100.00%
Living in the Selection Area but Employed Outside	95,958	14.90%
Living and Employed in the Selection Area	547,474	85.10%

Source: US Census Bureau, Longitudinal Employer-Household Dynamics OnTheMap, 2014



Commuting (Inflow/Outflow)

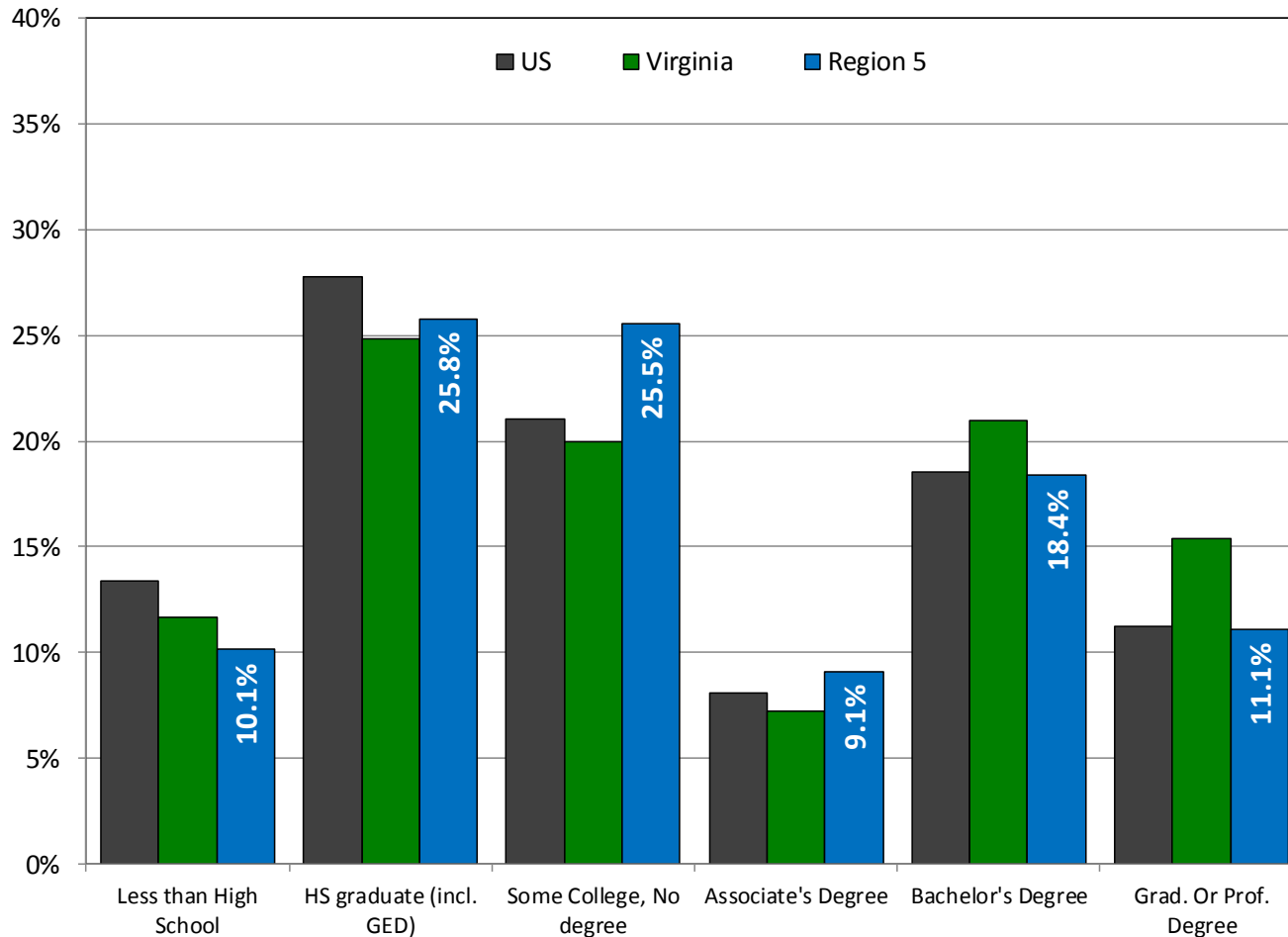
Commuting Patterns: Region 5

	Employed in Selection Area	Employed in the Selection Area but Living Outside		Employed and Living in the Selection Area		Living in the Selection Area	Living in the Selection Area but Employed Outside		Living and Employed in the Selection Area	
Virginia	3,313,939	286,033	8.6%	3,027,906	91.4%	3,377,666	349,760	10.4%	3,027,906	89.6%
Region 5	653,123	105,649	16.2%	547,474	83.8%	643,432	95,958	14.9%	547,474	85.1%
Accomack	10,819	4,427	40.9%	6,392	59.1%	14,643	8,251	56.3%	6,392	43.7%
Isle of Wight	10,073	7,096	70.4%	2,977	29.6%	15,525	12,548	80.8%	2,977	19.2%
James City	25,998	18,096	69.6%	7,902	30.4%	25,627	17,725	69.2%	7,902	30.8%
Northampton	3,661	1,947	53.2%	1,714	46.8%	5,150	3,436	66.7%	1,714	33.3%
Southampton	3,649	2,084	57.1%	1,565	42.9%	6,739	5,174	76.8%	1,565	23.2%
York	17,804	14,177	79.6%	3,627	20.4%	24,552	20,925	85.2%	3,627	14.8%
Chesapeake city	91,624	63,102	68.9%	28,522	31.1%	91,355	62,833	68.8%	28,522	31.2%
Franklin city	3,368	2,594	77.0%	774	23.0%	3,036	2,262	74.5%	774	25.5%
Hampton city	48,737	33,834	69.4%	14,903	30.6%	51,436	36,533	71.0%	14,903	29.0%
Newport News city	92,437	63,431	68.6%	29,006	31.4%	68,999	39,993	58.0%	29,006	42.0%
Norfolk city	120,870	89,749	74.3%	31,121	25.7%	78,524	47,403	60.4%	31,121	39.6%
Poquoson city	1,255	870	69.3%	385	30.7%	4,774	4,389	91.9%	385	8.1%
Portsmouth city	30,035	22,296	74.2%	7,739	25.8%	36,525	28,786	78.8%	7,739	21.2%
Suffolk city	24,087	16,072	66.7%	8,015	33.3%	34,086	26,071	76.5%	8,015	23.5%
Virginia Beach city	158,139	72,486	45.8%	85,653	54.2%	178,778	93,125	52.1%	85,653	47.9%
Williamsburg city	10,567	9,645	91.3%	922	8.7%	3,683	2,761	75.0%	922	25.0%

Source: US Census Bureau, Longitudinal Employer-Household Dynamics OnTheMap, 2014



Educational Attainment



Source: US Census Bureau, 2011-2015 American Community Survey



Educational Attainment

Educational Attainment: Region 5

	2006-2010						2011-2015					
	Less than High School	HS graduate (incl. GED)	Some College, No degree	Associate's Degree	Bachelor's Degree	Grad. Or Prof. Degree	Less than High School	HS graduate (incl. GED)	Some College, No degree	Associate's Degree	Bachelor's Degree	Grad. Or Prof. Degree
United States	14.9%	29.0%	20.6%	7.5%	17.6%	10.3%	13.3%	27.8%	21.1%	8.1%	18.5%	11.2%
Virginia	13.9%	26.0%	19.6%	6.7%	19.9%	13.9%	11.7%	24.8%	19.9%	7.3%	21.0%	15.4%
Region 5	11.6%	27.6%	24.8%	8.5%	17.3%	10.3%	10.1%	25.8%	25.5%	9.1%	18.4%	11.1%
Accomack	21.1%	37.9%	17.4%	5.5%	10.3%	7.7%	19.7%	39.9%	15.6%	6.1%	11.0%	7.7%
Isle of Wight	13.8%	30.9%	21.7%	8.5%	15.9%	9.2%	13.7%	27.7%	23.1%	8.6%	17.3%	9.6%
James City	6.7%	21.3%	20.5%	6.5%	24.6%	20.4%	6.2%	21.1%	18.5%	7.2%	26.5%	20.5%
Northampton	21.9%	36.0%	17.6%	5.6%	11.8%	7.0%	20.3%	34.2%	19.4%	5.6%	14.0%	6.5%
Southampton	26.7%	32.0%	20.8%	7.9%	9.1%	3.5%	19.6%	34.8%	23.3%	7.4%	10.1%	4.8%
York	5.4%	20.0%	22.6%	10.5%	23.4%	18.1%	6.0%	19.6%	21.8%	10.5%	22.8%	19.3%
Chesapeake city	10.7%	27.4%	25.3%	8.7%	17.5%	10.4%	8.9%	26.5%	25.7%	9.2%	18.8%	10.8%
Franklin city	23.9%	29.4%	22.4%	5.3%	11.9%	7.1%	19.8%	24.9%	23.5%	5.6%	16.1%	10.1%
Hampton city	11.3%	30.7%	27.4%	8.7%	13.6%	8.2%	10.1%	27.3%	30.0%	9.3%	14.9%	8.3%
Newport News city	11.1%	29.3%	26.8%	9.4%	15.5%	8.0%	11.0%	28.2%	27.2%	9.6%	15.0%	9.0%
Norfolk city	16.1%	29.8%	23.8%	6.7%	14.0%	9.7%	13.0%	26.9%	26.1%	7.8%	15.6%	10.6%
Poquoson city	6.1%	25.0%	23.5%	9.4%	21.1%	14.9%	6.4%	27.0%	21.4%	8.1%	22.4%	14.7%
Portsmouth city	18.3%	30.8%	24.9%	7.3%	12.2%	6.4%	16.4%	28.9%	25.9%	8.1%	13.3%	7.5%
Suffolk city	15.3%	29.1%	22.7%	7.8%	16.3%	8.7%	12.5%	28.3%	23.6%	9.3%	16.4%	10.0%
Virginia Beach city	7.5%	24.6%	26.2%	9.7%	21.0%	10.9%	6.7%	22.4%	26.9%	10.3%	22.2%	11.7%
Williamsburg city	6.5%	21.8%	20.5%	7.9%	23.7%	19.6%	8.3%	15.5%	16.7%	7.0%	27.1%	25.3%

Source: US Census Bureau, 2006-2010 and 2011-2015 American Community Surveys



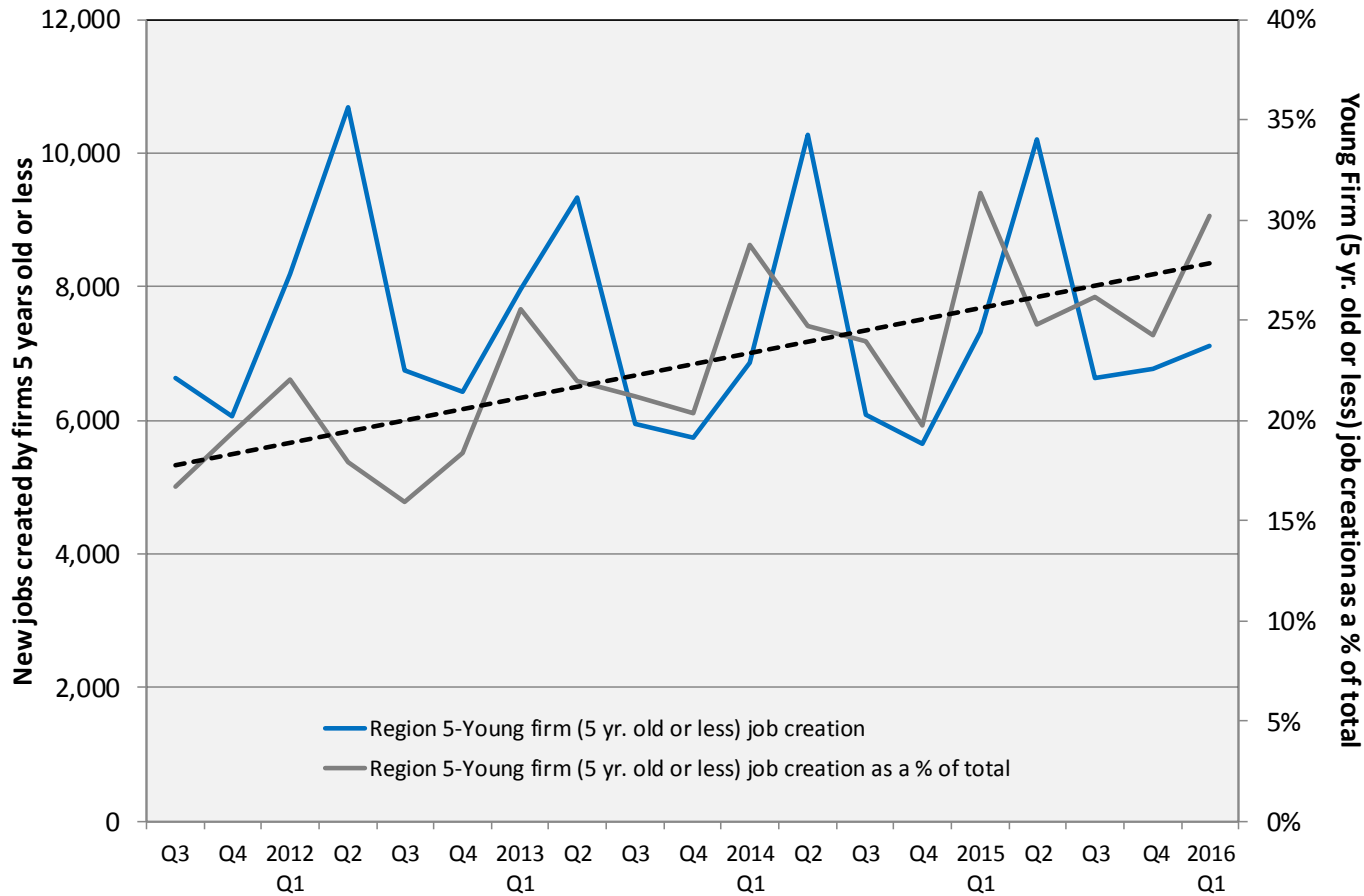
VIRGINIA INITIATIVE FOR
**GROWTH &
OPPORTUNITY**
IN EACH REGION

Firm Growth



VIRGINIA INITIATIVE FOR
GROWTH & OPPORTUNITY
 IN EACH REGION

Jobs Created by Young Companies (5 years old or less)



Source: US Census Bureau, Longitudinal Employer-Household Dynamics, Quarterly Workforce Indicators



Jobs Created by Young Companies (5 years old or less)

Region 5: Young firm (5 yrs old or less) job creation

	2012 Average	2015 Average	2012 as a % of Total	2015 as a % of Total
US	1,542,135	1,674,953	25.2%	26.7%
Virginia	42,118	39,288	19.4%	26.2%
Region 5	8,005	7,732	18.4%	26.2%
Accomack	198	135	23.9%	23.0%
Isle of Wight	150	108	23.3%	26.0%
James City	320	318	15.2%	22.4%
Northampton	70	107	8.6%	19.2%
Southampton	39	25	19.1%	24.1%
York	259	240	17.6%	23.7%
Chesapeake city	1,059	1,134	17.9%	27.4%
Franklin city	39	72	20.5%	45.3%
Hampton city	620	516	17.7%	27.7%
Newport News city	646	695	10.4%	24.8%
Norfolk city	983	1,041	15.4%	22.9%
Poquoson city	54	25	38.2%	33.7%
Portsmouth city	435	306	20.4%	20.8%
Suffolk city	378	339	26.2%	32.5%
Virginia Beach city	2,623	2,577	23.7%	28.9%
Williamsburg city	133	98	25.9%	24.8%

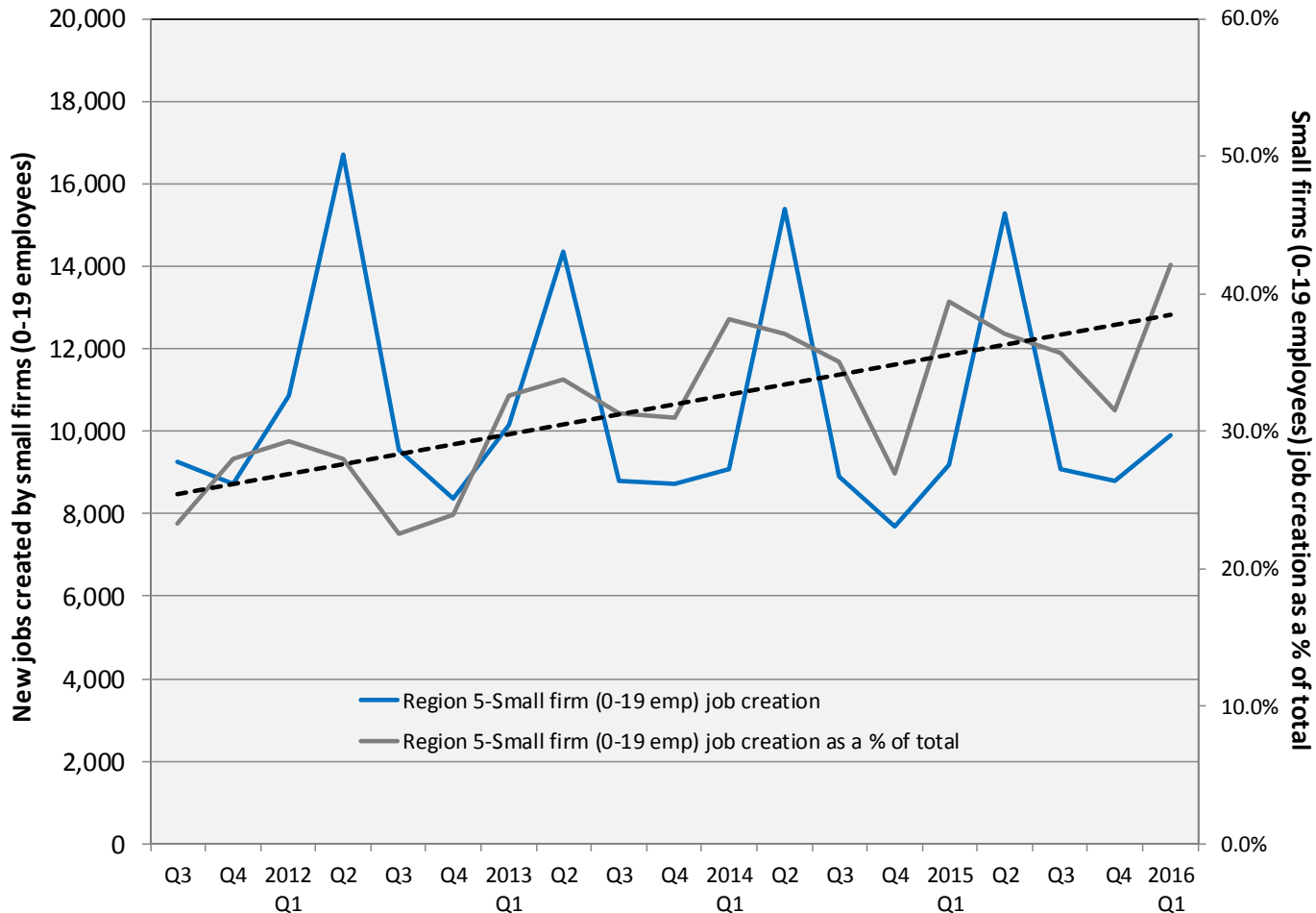
Source: US Census Bureau, LEHD, QWI



VIRGINIA INITIATIVE FOR
**GROWTH &
 OPPORTUNITY**
 IN EACH REGION

Jobs Created by Small Companies

(less than 20 employees)



Source: US Census Bureau, Longitudinal Employer-Household Dynamics, Quarterly Workforce Indicators



Jobs Created by Small Companies

(less than 20 employees)

Region 5: Small firm (0-19 Emp.) job creation

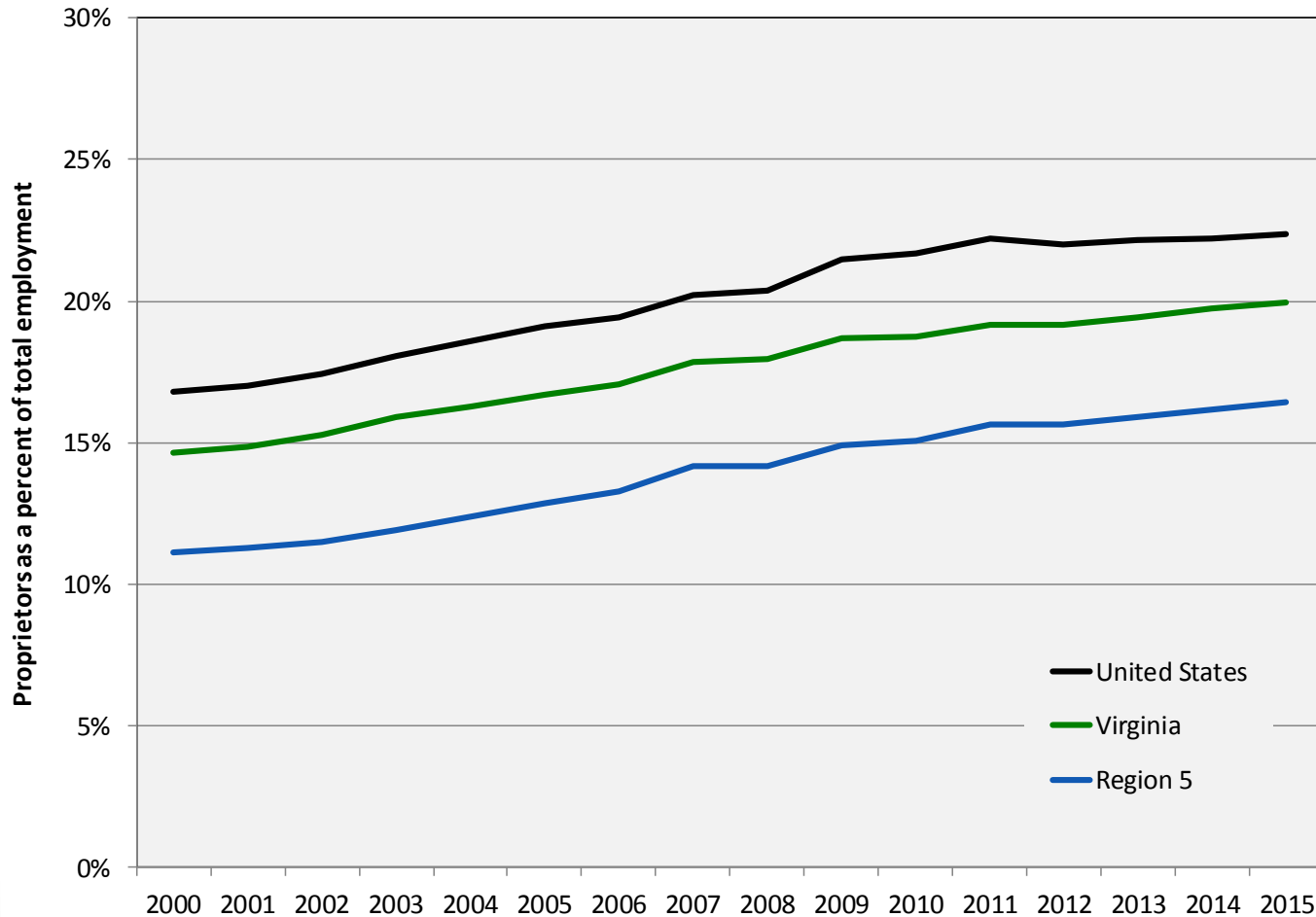
	2012 Average	2015 Average	2012 as a % of Total	2015 as a % of Total
US	2,203,129	2,268,500	36.0%	36.2%
Virginia	58,797	54,683	27.1%	36.4%
Region 5	11,371	10,591	26.1%	35.9%
Accomack	323	314	38.9%	53.8%
Isle of Wight	184	185	28.5%	44.6%
James City	480	431	22.8%	30.3%
Northampton	171	175	21.3%	31.5%
Southampton	73	62	36.3%	60.5%
York	530	468	36.1%	46.3%
Chesapeake city	1,490	1,500	25.2%	36.2%
Franklin city	66	66	34.4%	41.4%
Hampton city	728	612	20.8%	32.9%
Newport News city	1,005	1,000	16.2%	35.7%
Norfolk city	1,332	1,290	20.9%	28.4%
Poquoson city	54	56	38.2%	76.3%
Portsmouth city	635	478	29.9%	32.5%
Suffolk city	441	408	30.6%	39.2%
Virginia Beach city	3,708	3,419	33.5%	38.4%
Williamsburg city	152	129	29.5%	32.5%

Source: US Census Bureau, LEHD, QWI



VIRGINIA INITIATIVE FOR
**GROWTH &
OPPORTUNITY**
IN EACH REGION

Sole Proprietorships



Source: US Bureau of Economic Analysis



Sole Proprietorships as a percent of total employment

Proprietors as a percent of total employment: Region 5

	2000 Proprietors	2010 Proprietors	2015 Proprietors	Annual Growth (00-10)	Annual Growth (10-15)	Proprietors as a % of total employment
United States	27,760,800	37,508,700	42,561,400	3.1%	2.1%	22.4%
Virginia	644,573	890,602	1,008,978	3.3%	2.1%	19.9%
Region 5	107,222	150,455	169,820	3.4%	2.0%	16.4%
Accomack	3,411	3,730	4,037	0.9%	1.3%	22.3%
Chesapeake city	13,937	20,056	22,384	3.7%	1.8%	17.6%
Hampton city	7,721	9,370	10,930	2.0%	2.6%	14.5%
Isle of Wight	3,157	3,519	3,819	1.1%	1.4%	24.5%
James City + Williamsburg, VA*	7,161	10,594	11,800	4.0%	1.8%	21.0%
Newport News city	6,581	13,141	15,060	7.2%	2.3%	12.2%
Norfolk city	10,935	18,097	21,057	5.2%	2.6%	9.9%
Northampton	1,359	1,725	1,872	2.4%	1.4%	26.4%
Portsmouth city	4,654	6,701	7,524	3.7%	1.9%	12.4%
Southampton + Franklin, VA*	1,605	2,400	2,609	4.1%	1.4%	22.5%
Suffolk city	4,331	8,204	8,949	6.6%	1.5%	22.6%
Virginia Beach city	34,861	46,418	52,848	2.9%	2.2%	20.7%
York + Poquoson, VA*	7,509	6,500	6,931	-1.4%	1.1%	20.9%

Source: US Bureau of Economic Analysis



VIRGINIA INITIATIVE FOR
**GROWTH &
OPPORTUNITY**
IN EACH REGION

Thank You

Terry L. Clower Ph.D. – tclower@gmu.edu

Mark C. White Ph.D. – mwhite@gmu.edu

Spencer A. Shanholtz – sshanhol@gmu.edu



cra.gmu.edu

[@GMU_CRA](#)