



VIRGINIA INITIATIVE FOR
**GROWTH &
OPPORTUNITY**
IN EACH REGION

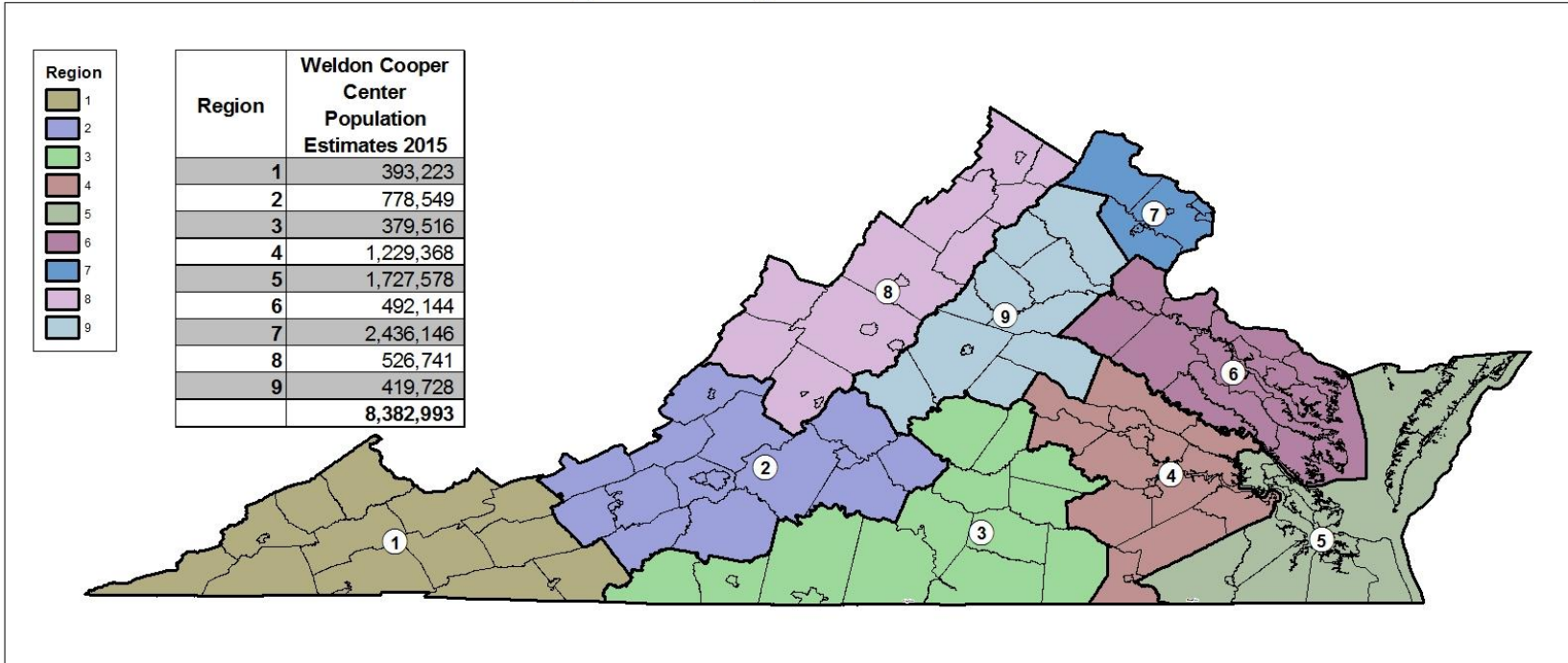
REGIONAL BASELINE MEASURES
REGION 6





VIRGINIA INITIATIVE FOR
**GROWTH &
OPPORTUNITY**
IN EACH REGION

GO Virginia Regional Boundaries



0 15 30 60 90 120 Miles

Source: US Census, VA PDC



12/5/2016



VIRGINIA INITIATIVE FOR
**GROWTH &
OPPORTUNITY**
IN EACH REGION

Region 6

Counties of:

- Caroline, Essex, Gloucester, King and Queen, King George, King William, Lancaster, Mathews, Middlesex, Northumberland, Richmond, Spotsylvania, Stafford, Westmoreland

City of:

- Fredericksburg



VIRGINIA INITIATIVE FOR
**GROWTH &
OPPORTUNITY**
IN EACH REGION

Data Included

- **Population**
 - Population Trends
- **Income and Wealth**
 - Per Capita Income
 - Percent of Population in Poverty
- **Employment**
 - Total Employment
 - Unemployment Rate
- **Industry**
 - Employment Trends by Industry Sector
 - Relative Concentration (Location Quotients) by Sector
 - Wages by Industry Sector



VIRGINIA INITIATIVE FOR
**GROWTH &
OPPORTUNITY**
IN EACH REGION

Data Included

- **Labor Force**
 - Labor Force Participation Rate
 - Commuting inflow/outflow
 - Educational Attainment
- **Firm Growth**
 - Jobs Created by Young Companies (5 years old or less)
 - Jobs Created by Small Companies (less than 20 employees)
 - Sole Proprietorships



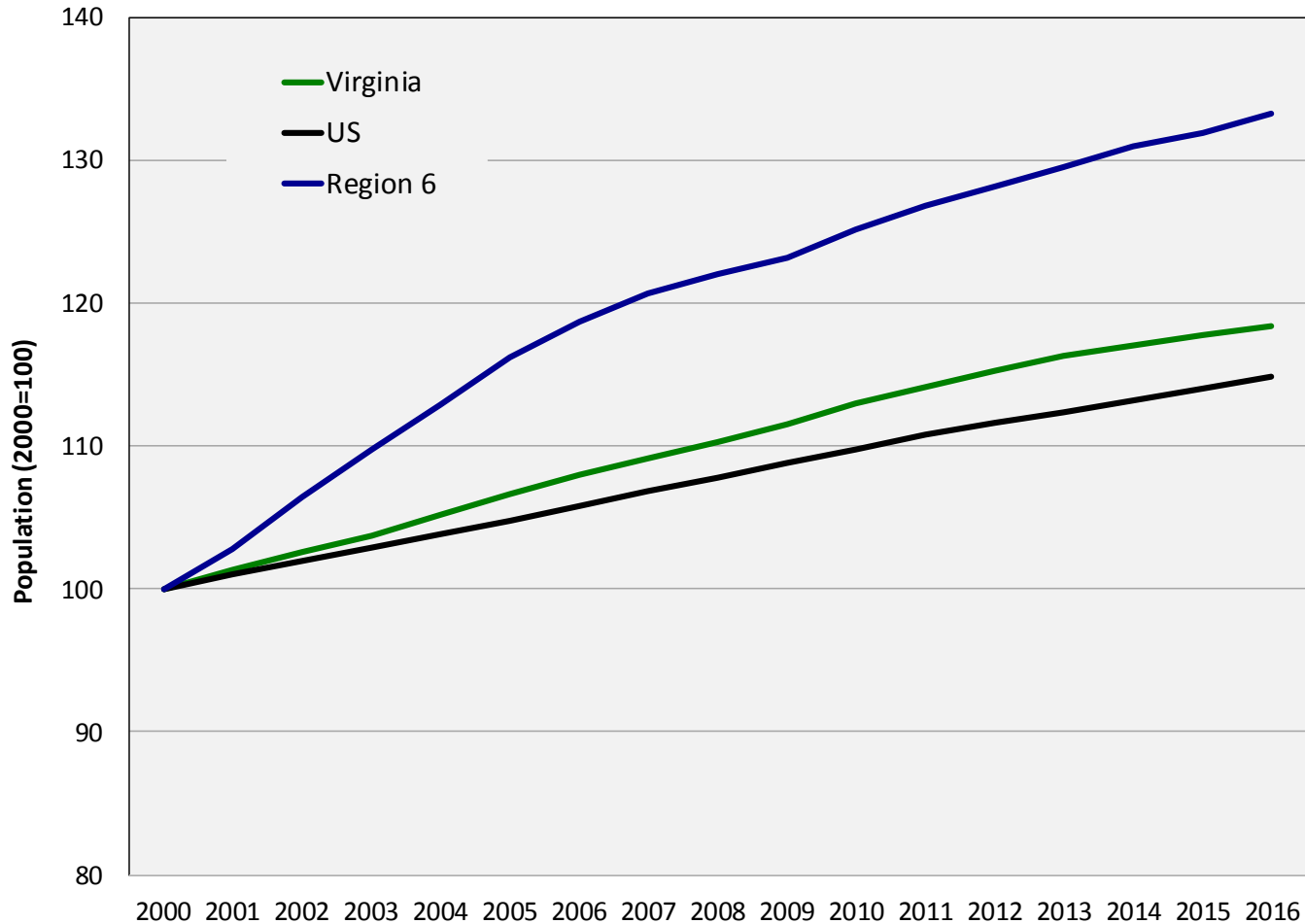
VIRGINIA INITIATIVE FOR
**GROWTH &
OPPORTUNITY**
IN EACH REGION

Population



VIRGINIA INITIATIVE FOR
**GROWTH &
OPPORTUNITY**
IN EACH REGION

Population Trends



Source: US Census Bureau, Population Estimates Programs



Population Trends

Population Trends: Region 6

	2000	2010	2016	Annual Growth (00-10)	Annual Growth (10-16)
United States	281,424,600	308,745,538	323,127,513	0.9%	0.8%
Virginia	7,105,817	8,025,773	8,411,808	1.2%	0.8%
Region 6	376,459	470,955	501,780	2.3%	1.1%
Caroline	22,136	28,646	30,178	2.6%	0.9%
Essex	9,984	11,148	11,123	1.1%	0.0%
Gloucester	34,793	36,939	37,214	0.6%	0.1%
King and Queen	6,620	6,969	7,159	0.5%	0.4%
King George	16,916	23,680	25,984	3.4%	1.6%
King William	13,238	15,986	16,334	1.9%	0.4%
Lancaster	11,549	11,371	10,972	-0.2%	-0.6%
Mathews	9,142	8,959	8,782	-0.2%	-0.3%
Middlesex	9,932	10,970	10,778	1.0%	-0.3%
Northumberland	12,229	12,348	12,222	0.1%	-0.2%
Richmond	8,803	9,268	8,774	0.5%	-0.9%
Spotsylvania	91,387	123,174	132,010	3.0%	1.2%
Stafford	93,625	129,845	144,361	3.3%	1.8%
Westmoreland	16,644	17,450	17,592	0.5%	0.1%
Fredericksburg city	19,461	24,202	28,297	2.2%	2.6%

Source: US Census Bureau, Population Estimates Programs



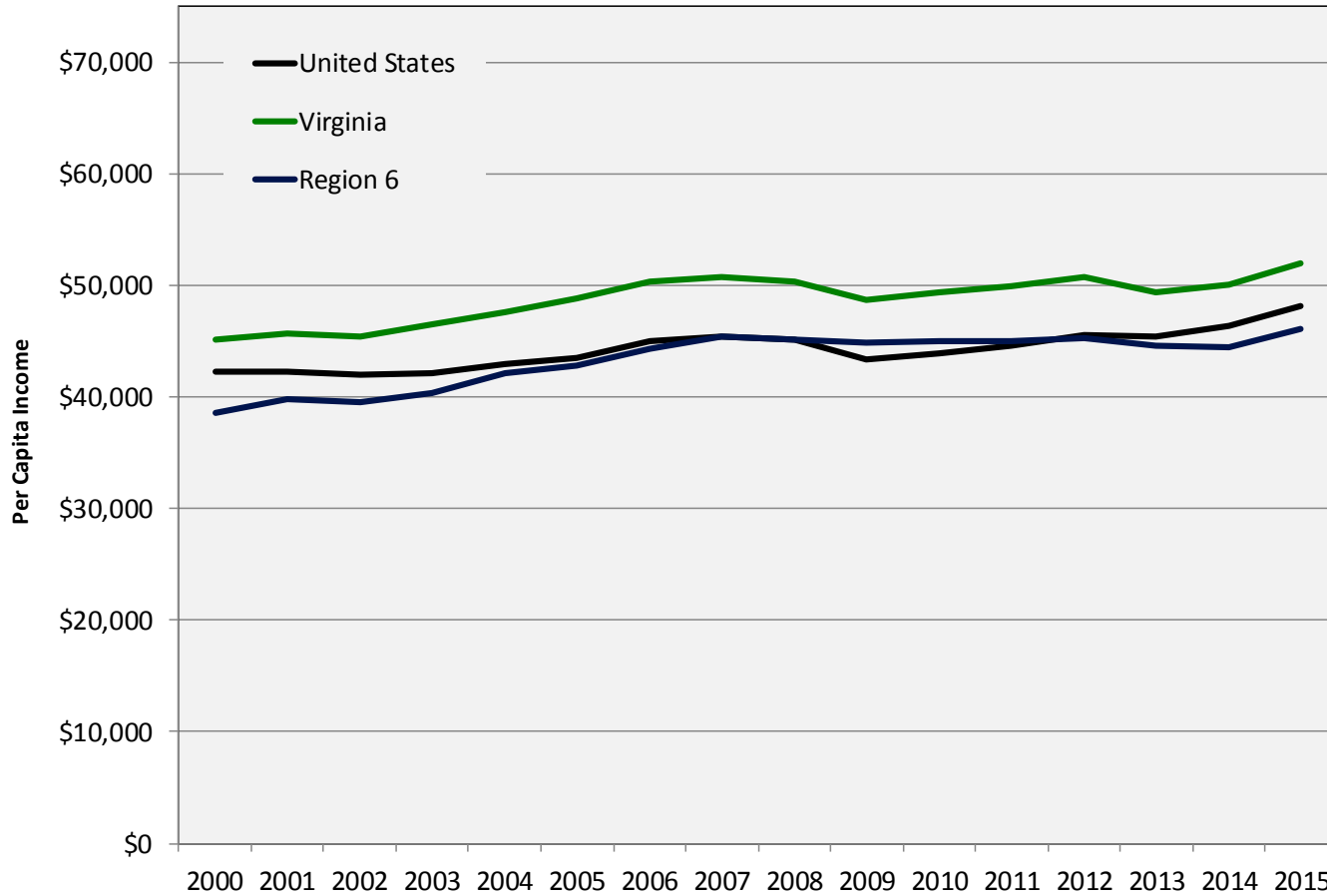
VIRGINIA INITIATIVE FOR
**GROWTH &
OPPORTUNITY**
IN EACH REGION

Income and Wealth



VIRGINIA INITIATIVE FOR
**GROWTH &
OPPORTUNITY**
IN EACH REGION

Per Capita Income



Source: US Bureau of Economic Analysis, PCI adjusted for 2015 dollars



Per Capita Income

Per Capita Income: Region 6

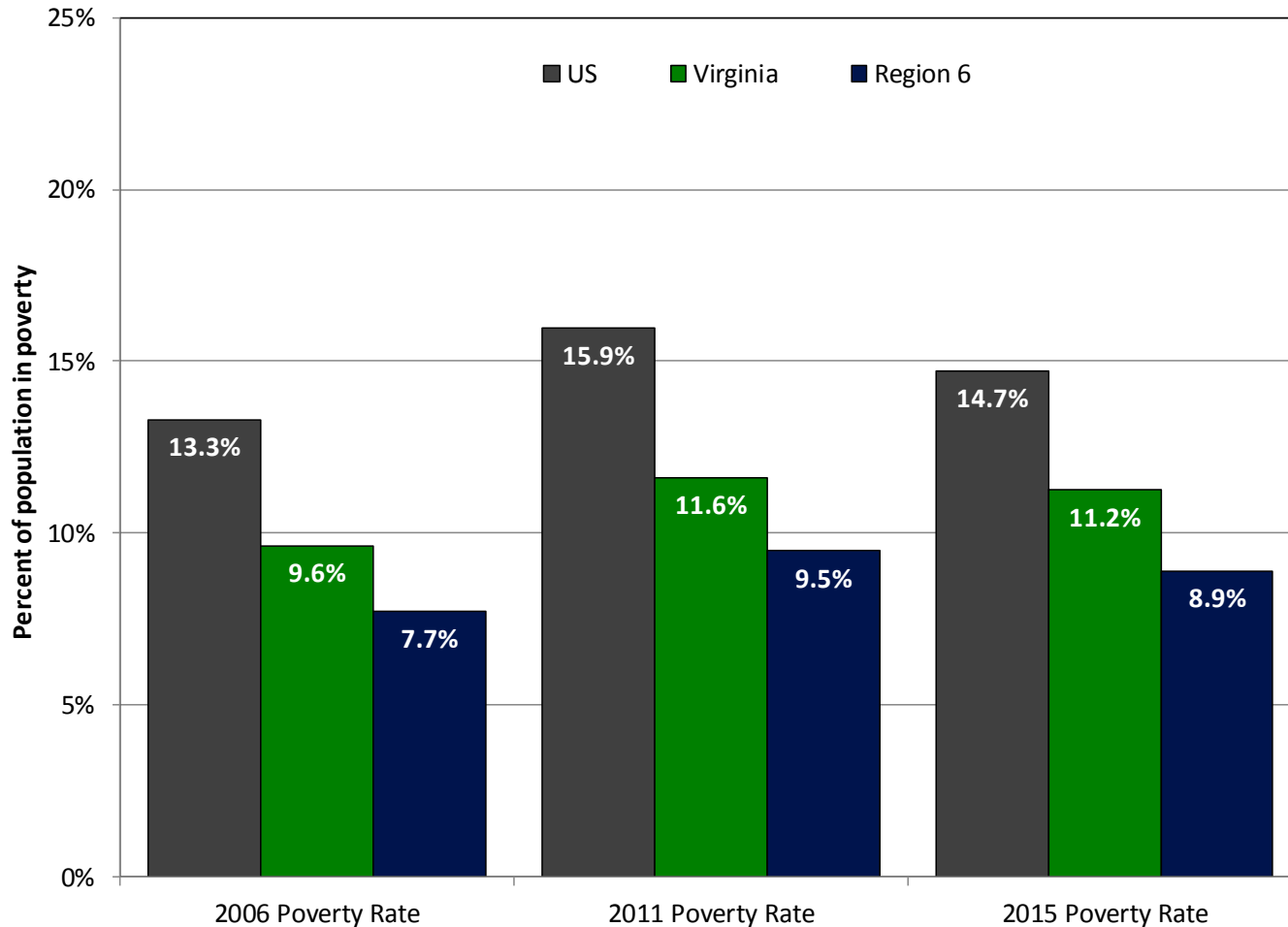
	2000	2010	2015	Annual Growth (00-10)	Annual Growth (10-15)
United States	\$42,231	\$43,902	\$48,112	0.4%	1.5%
Virginia	\$45,144	\$49,421	\$52,052	0.9%	0.9%
Region 6	\$38,639	\$44,997	\$46,109	1.5%	0.4%
Caroline	\$34,636	\$37,247	\$38,035	0.7%	0.3%
Essex	\$32,393	\$36,521	\$38,644	1.2%	0.9%
Gloucester	\$36,044	\$43,332	\$44,728	1.9%	0.5%
King and Queen	\$33,789	\$35,748	\$35,980	0.6%	0.1%
King George	\$40,046	\$49,283	\$50,109	2.1%	0.3%
King William	\$38,699	\$39,942	\$42,633	0.3%	1.1%
Lancaster	\$43,902	\$47,816	\$50,763	0.9%	1.0%
Mathews	\$44,286	\$47,755	\$50,774	0.8%	1.0%
Middlesex	\$38,248	\$42,317	\$45,488	1.0%	1.2%
Northumberland	\$35,550	\$39,171	\$42,790	1.0%	1.5%
Richmond	\$25,555	\$28,754	\$32,128	1.2%	1.9%
Spotsylvania + Fredericksburg, VA*	\$40,289	\$45,194	\$46,401	1.2%	0.4%
Stafford	\$40,658	\$50,678	\$50,067	2.2%	-0.2%
Westmoreland	\$33,907	\$36,420	\$38,991	0.7%	1.1%

Source: US Bureau of Economic Analysis, PCI adjusted for 2015 dollars



VIRGINIA INITIATIVE FOR
**GROWTH &
OPPORTUNITY**
IN EACH REGION

Percent of Population in Poverty



Source: US Census Bureau, Small Area Income and Poverty Estimates



Percent of Population in Poverty

Poverty Trends: Region 6

	2006 Poverty Rate	2011 Poverty Rate	2015 Poverty Rate
United States	13.3%	15.9%	14.7%
Virginia	9.6%	11.6%	11.2%
Region 6	7.7%	9.5%	8.9%
Caroline	9.4%	12.2%	12.0%
Essex	12.4%	14.9%	15.5%
Gloucester	9.6%	10.2%	9.3%
King and Queen	12.2%	13.2%	14.0%
King George	6.0%	6.9%	7.1%
King William	6.9%	8.7%	7.9%
Lancaster	13.5%	15.7%	13.1%
Mathews	8.3%	10.0%	10.2%
Middlesex	12.7%	12.8%	12.8%
Northumberland	13.4%	13.8%	13.7%
Richmond	16.5%	20.4%	17.7%
Spotsylvania	5.6%	7.6%	7.7%
Stafford	4.4%	6.3%	5.4%
Westmoreland	14.5%	17.3%	14.1%
Fredericksburg city	14.9%	15.9%	15.9%

Source: US Census Bureau, Small Area Income and Poverty Estimates



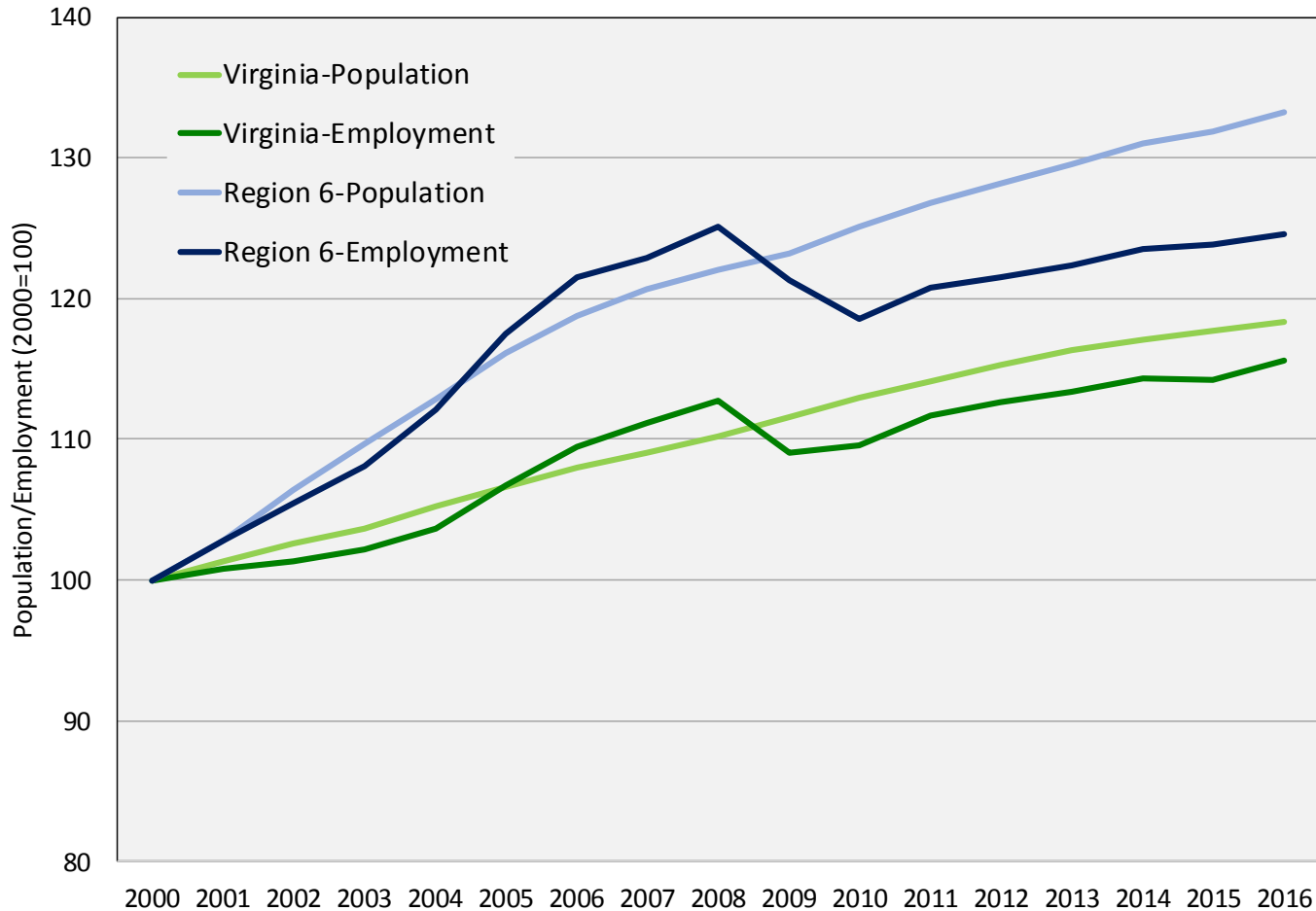
VIRGINIA INITIATIVE FOR
**GROWTH &
OPPORTUNITY**
IN EACH REGION

Employment



VIRGINIA INITIATIVE FOR
**GROWTH &
OPPORTUNITY**
IN EACH REGION

Total Employment



Source: US Census Bureau Population Estimates, US Bureau of Labor Statistics Local Area Unemployment Statistics (2016 preliminary)



Total Employment

Employment Trends: Region 6

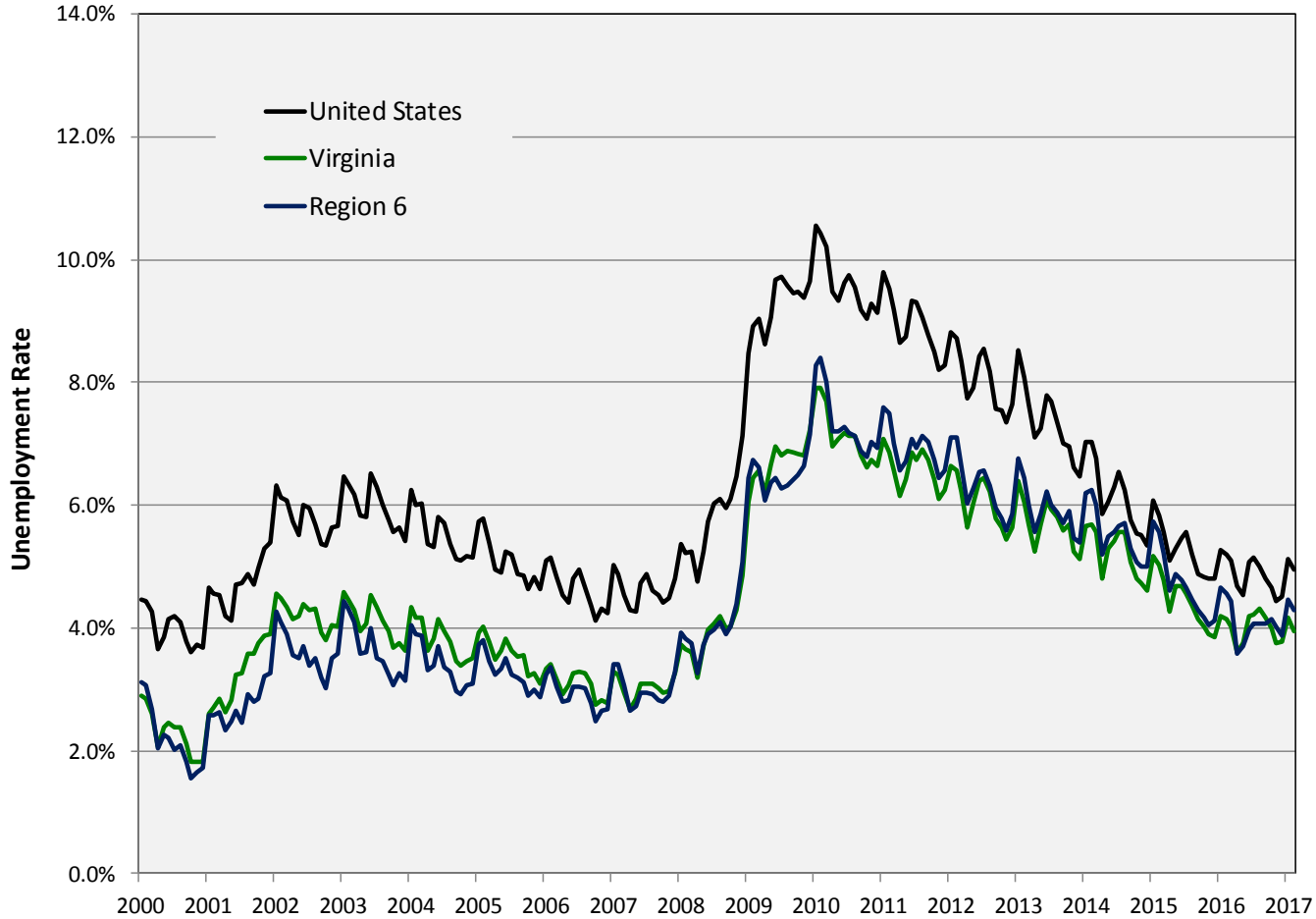
	2000	2010	2016	Annual Growth (00-10)	Annual Growth (10-16)
United States	136,891,000	139,064,000	151,436,000	0.2%	1.4%
Virginia	3,522,865	3,860,386	4,070,260	0.9%	0.9%
Region 6	185,676	220,127	231,258	1.7%	0.8%
Caroline	10,758	12,972	14,356	1.9%	1.7%
Essex	5,013	5,196	5,232	0.4%	0.1%
Gloucester	17,252	18,219	18,338	0.5%	0.1%
King and Queen	3,079	3,302	3,495	0.7%	0.9%
King George	8,243	10,573	11,615	2.5%	1.6%
King William	6,896	8,011	8,545	1.5%	1.1%
Lancaster	4,566	5,024	4,757	1.0%	-0.9%
Mathews	4,165	3,956	3,898	-0.5%	-0.2%
Middlesex	4,449	4,789	4,776	0.7%	0.0%
Northumberland	5,192	5,617	5,091	0.8%	-1.6%
Richmond	3,277	4,058	3,736	2.2%	-1.4%
Spotsylvania	47,689	58,922	61,616	2.1%	0.7%
Stafford	47,600	59,748	64,323	2.3%	1.2%
Westmoreland	7,411	8,436	8,405	1.3%	-0.1%
Fredericksburg city	10,086	11,304	13,075	1.1%	2.5%

Source: US BLS Local Area Unemployment Statistics (2016 preliminary)



VIRGINIA INITIATIVE FOR
**GROWTH &
OPPORTUNITY**
IN EACH REGION

Unemployment Rate



Source: US Bureau of Labor Statistics, Local Area Unemployment Statistics



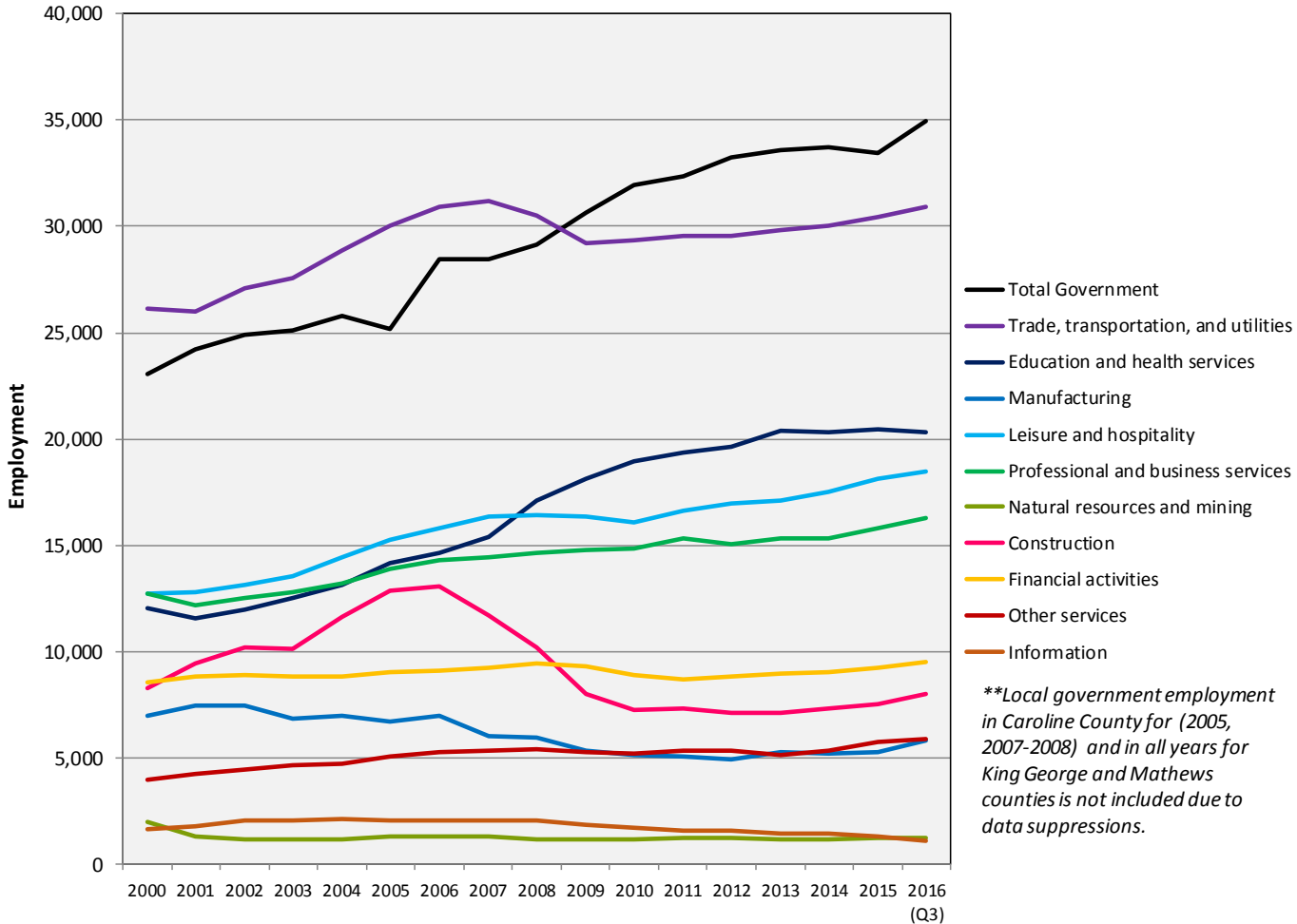
VIRGINIA INITIATIVE FOR
**GROWTH &
OPPORTUNITY**
IN EACH REGION

Industry



VIRGINIA INITIATIVE FOR
**GROWTH &
 OPPORTUNITY**
 IN EACH REGION

Employment Trends by Industry Sector



Source: US Bureau of Labor Statistics, Quarterly Census of Employment and Wages



Employment Trends by Industry Sector

Region 6: Industry Sectors, 2015*

Sector	Employment#	LQ	Region 6 Avg Wage	US Avg Wage
Trade, transportation, and utilities	30,448	1.05	\$32,756	\$44,321
Education and health services	20,424	0.89	\$43,040	\$47,383
Local government	19,957	1.33	\$37,048	\$47,573
Leisure and hospitality	18,112	1.11	\$15,863	\$21,807
Professional and business services	15,819	0.74	\$62,860	\$69,270
Federal government	10,048	3.36	\$102,897	\$77,900
Financial activities	9,246	1.09	\$51,522	\$87,915
Construction	7,548	1.08	\$43,551	\$57,009
Other services	5,782	1.24	\$27,126	\$35,116
Manufacturing	5,285	0.40	\$48,748	\$64,305
State government	4,168	0.84	\$41,954	\$55,878
Information	1,313	0.44	\$48,384	\$95,098
Natural resources and mining	1,205	0.56	\$35,956	\$58,461

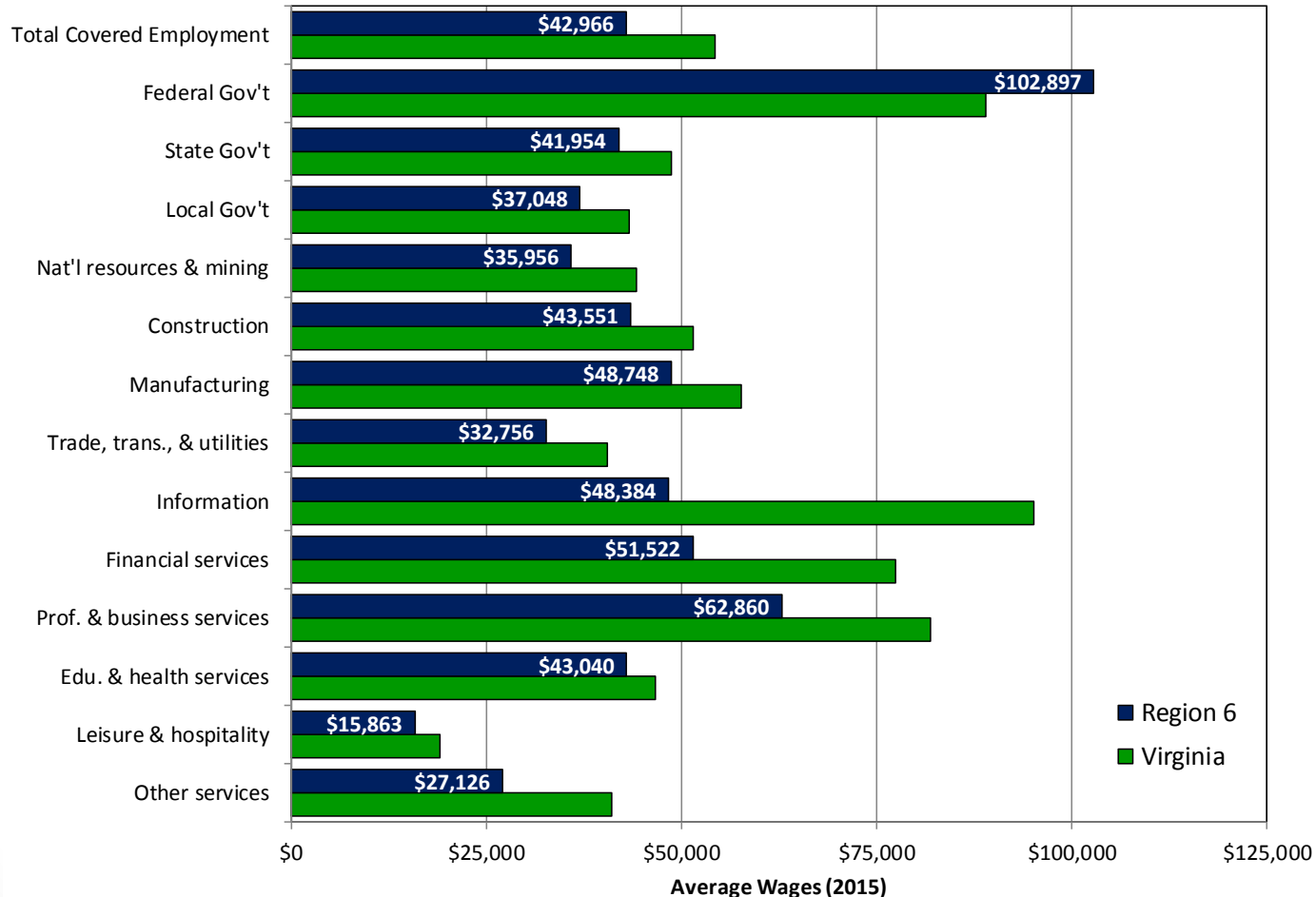
Source: US Bureau of Labor Statistics, Quarterly Census of Employment and Wages

*2015 is the most recently available complete year

#Does not include suppressed employment



Industry Wages by Sector



Source: US Bureau of Labor Statistics, Quarterly Census of Employment and Wages



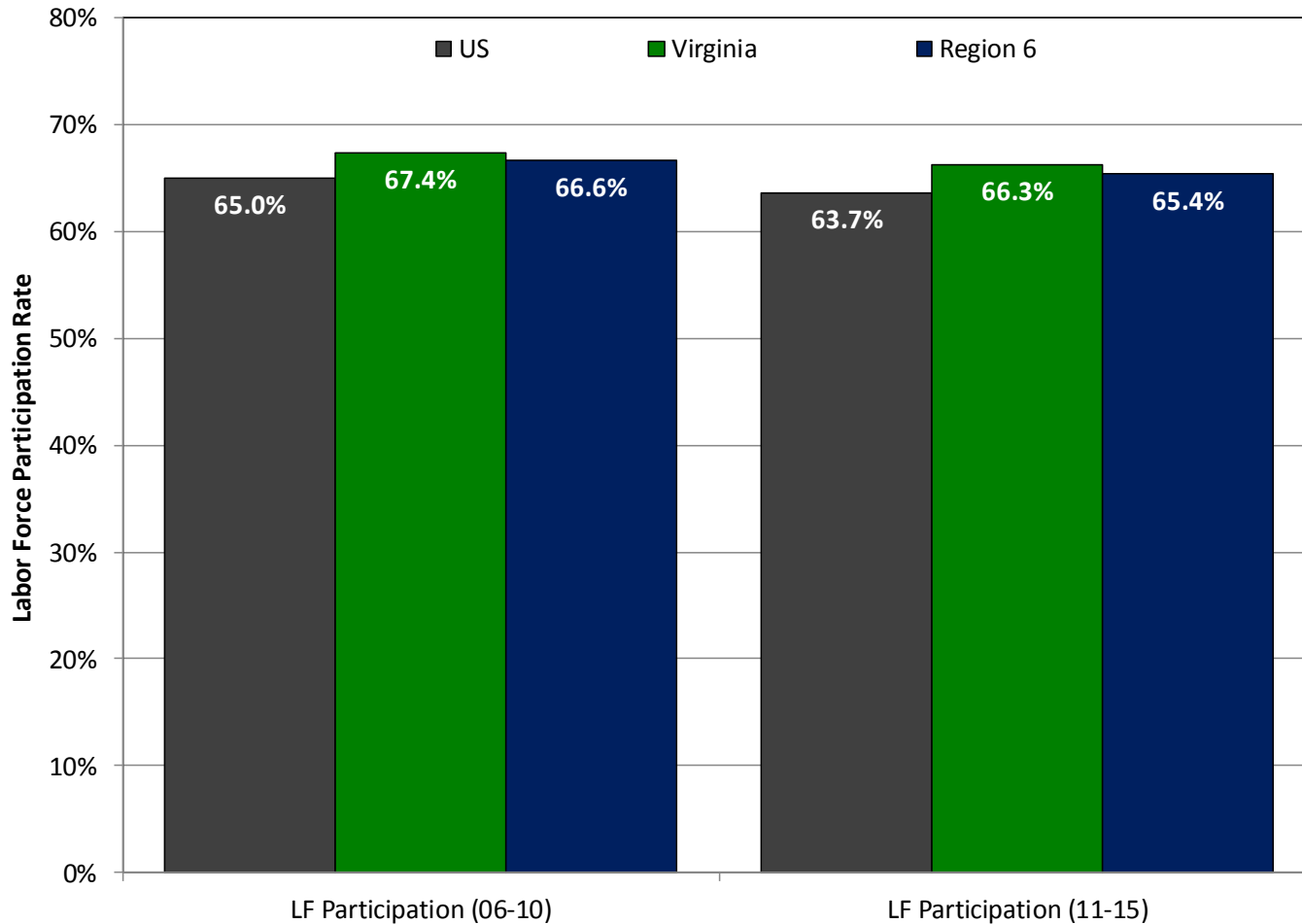
VIRGINIA INITIATIVE FOR
**GROWTH &
OPPORTUNITY**
IN EACH REGION

Labor Force



VIRGINIA INITIATIVE FOR
**GROWTH &
OPPORTUNITY**
IN EACH REGION

Labor Force Participation Rate



Source: US Census Bureau, 2006-2010 and 2011-2015 American Community Surveys



Labor Force Participation Rate

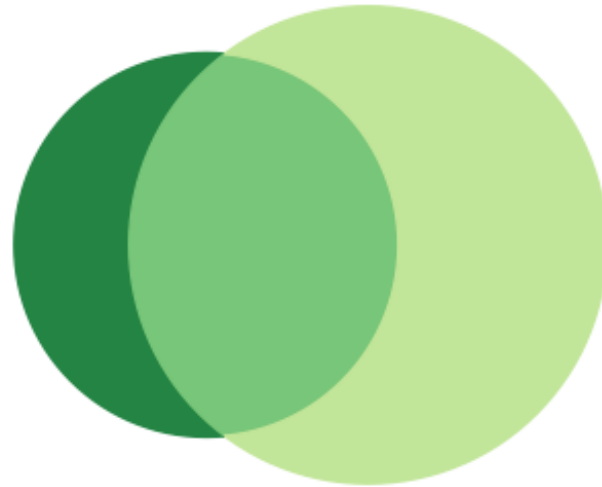
Labor Force Participation Rate: Region 6

	LF Participation (06-10)	LF Participation (11-15)
United States	65.0%	63.7%
Virginia	67.4%	66.3%
Region 6	66.6%	65.4%
Caroline	65.6%	67.8%
Essex	62.7%	62.2%
Gloucester	64.7%	62.6%
King and Queen	59.5%	60.3%
King George	71.1%	70.3%
King William	68.5%	66.6%
Lancaster	56.1%	52.8%
Mathews	52.1%	53.7%
Middlesex	53.0%	50.9%
Northumberland	53.8%	51.7%
Richmond	49.7%	45.2%
Spotsylvania	70.2%	68.1%
Stafford	72.1%	69.8%
Westmoreland	61.6%	57.1%
Fredericksburg city	62.2%	67.0%

Source: US Census Bureau, 2006-2010 and 2011-2015 American Community Surveys

Commuting (Inflow/Outflow)

Inflow/Outflow Job Counts in 2014



■	43,595 - Employed in Selection Area, Live Outside
■	112,219 - Live in Selection Area, Employed Outside
■	82,167 - Employed and Live in Selection Area

Inflow/Outflow Job Counts (Primary Jobs): Region 6

	2014	
	Count	Share
Employed in the Selection Area	125,762	100.00%
Employed in the Selection Area but Living Outside	43,595	34.70%
Employed and Living in the Selection Area	82,167	65.30%
Living in the Selection Area	194,386	100.00%
Living in the Selection Area but Employed Outside	112,219	57.70%
Living and Employed in the Selection Area	82,167	42.30%

Source: US Census Bureau, Longitudinal Employer-Household Dynamics OnTheMap, 2014



Commuting (Inflow/Outflow)

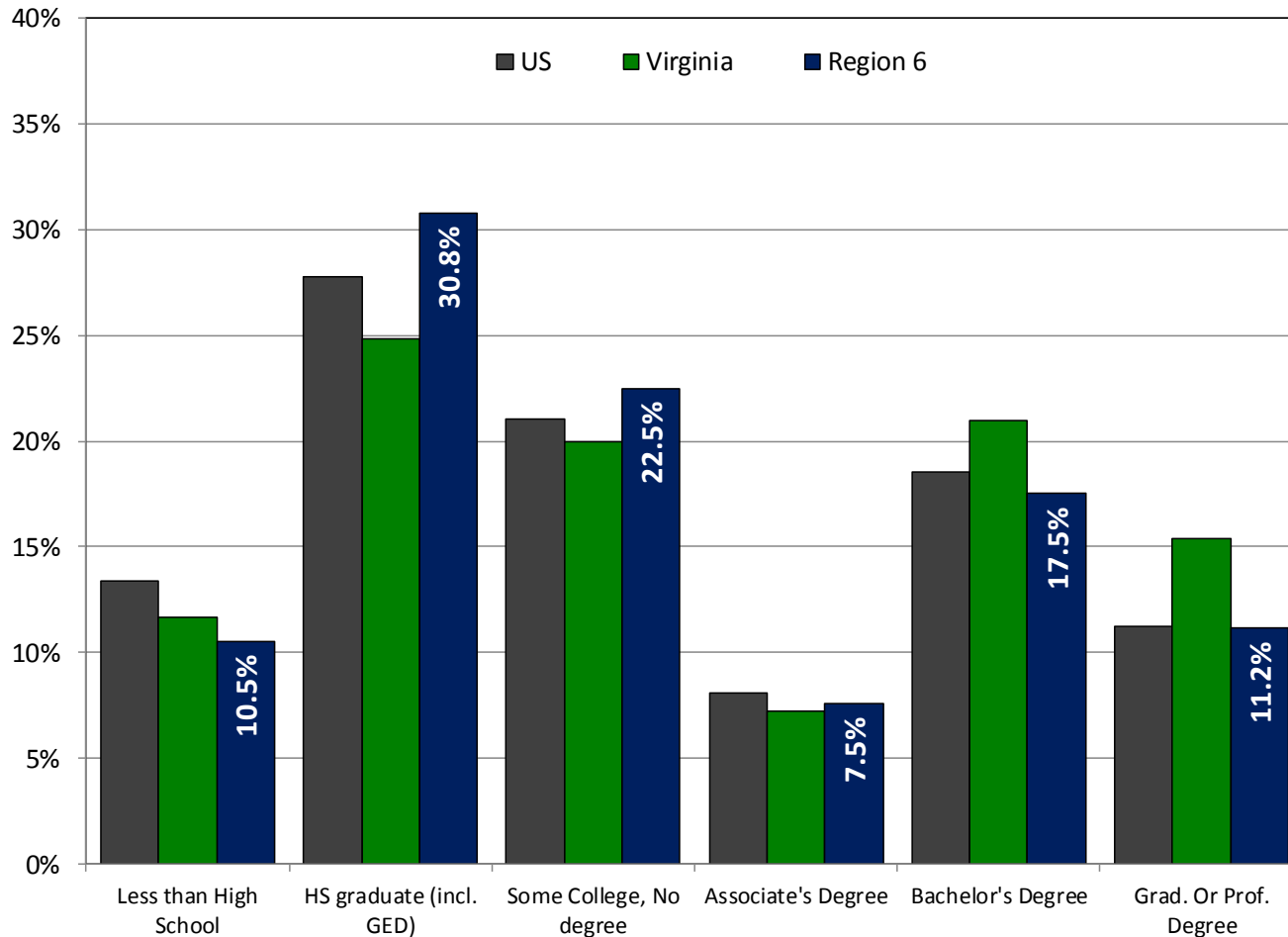
Commuting Patterns: Region 6

	Employed in Selection Area	Employed in the Selection Area but Living Outside		Employed and Living in the Selection Area		Living in the Selection Area	Living in the Selection Area but Employed Outside		Living and Employed in the Selection Area	
Virginia	3,313,939	286,033	8.6%	3,027,906	91.4%	3,377,666	349,760	10.4%	3,027,906	89.6%
Region 6	125,762	43,595	34.7%	82,167	65.3%	194,386	112,219	57.7%	82,167	42.3%
Caroline	4,072	2,658	65.3%	1,414	34.7%	13,862	12,448	89.8%	1,414	10.2%
Essex	3,567	2,455	68.8%	1,112	31.2%	5,220	4,108	78.7%	1,112	21.3%
Gloucester	8,051	4,693	58.3%	3,358	41.7%	14,584	11,226	77.0%	3,358	23.0%
King and Queen	860	597	69.4%	263	30.6%	3,718	3,455	92.9%	263	7.1%
King George	5,403	3,742	69.3%	1,661	30.7%	8,659	6,998	80.8%	1,661	19.2%
King William	3,293	2,325	70.6%	968	29.4%	8,732	7,764	88.9%	968	11.1%
Lancaster	3,997	2,297	57.5%	1,700	42.5%	5,092	3,392	66.6%	1,700	33.4%
Mathews	1,325	799	60.3%	526	39.7%	2,997	2,471	82.4%	526	17.6%
Middlesex	2,994	1,910	63.8%	1,084	36.2%	7,455	6,371	85.5%	1,084	14.5%
Northumberland	2,084	1,129	54.2%	955	45.8%	4,980	4,025	80.8%	955	19.2%
Richmond	2,435	1,809	74.3%	626	25.7%	3,356	2,730	81.3%	626	18.7%
Spotsylvania	31,088	18,515	59.6%	12,573	40.4%	50,155	37,582	74.9%	12,573	25.1%
Stafford	33,100	22,254	67.2%	10,846	32.8%	48,613	37,767	77.7%	10,846	22.3%
Westmoreland	2,945	1,512	51.3%	1,433	48.7%	7,401	5,968	80.6%	1,433	19.4%
Fredericksburg city	3,368	2,594	77.0%	774	23.0%	3,036	2,262	74.5%	774	25.5%

Source: US Census Bureau, Longitudinal Employer-Household Dynamics OnTheMap, 2014



Educational Attainment



Source: US Census Bureau, 2011-2015 American Community Survey



Educational Attainment

Educational Attainment: Region 6

	2006-2010						2011-2015					
	Less than High School	HS graduate (incl. GED)	Some College, No degree	Associate's Degree	Bachelor's Degree	Grad. Or Prof. Degree	Less than High School	HS graduate (incl. GED)	Some College, No degree	Associate's Degree	Bachelor's Degree	Grad. Or Prof. Degree
United States	14.9%	29.0%	20.6%	7.5%	17.6%	10.3%	13.3%	27.8%	21.1%	8.1%	18.5%	11.2%
Virginia	13.9%	26.0%	19.6%	6.7%	19.9%	13.9%	11.7%	24.8%	19.9%	7.3%	21.0%	15.4%
Region 6	13.1%	31.3%	21.5%	7.1%	17.0%	10.0%	10.5%	30.8%	22.5%	7.5%	17.5%	11.2%
Caroline	18.2%	39.5%	22.0%	4.9%	11.0%	4.5%	17.8%	36.7%	20.6%	5.8%	12.9%	6.2%
Essex	19.9%	36.5%	20.4%	6.6%	12.8%	3.8%	17.7%	38.5%	22.9%	5.7%	9.0%	6.2%
Gloucester	14.7%	33.3%	25.0%	7.9%	12.9%	6.3%	9.8%	33.9%	22.6%	11.7%	14.1%	8.0%
King and Queen	24.2%	42.5%	19.6%	3.7%	7.3%	2.6%	15.2%	41.1%	20.2%	5.5%	12.5%	5.6%
King George	9.8%	30.3%	21.8%	7.6%	20.2%	10.3%	7.3%	30.3%	22.6%	7.4%	19.0%	13.3%
King William	13.1%	40.1%	21.1%	6.0%	14.4%	5.4%	12.3%	39.4%	22.3%	7.6%	12.5%	5.9%
Lancaster	17.7%	27.6%	19.5%	7.6%	19.1%	8.6%	10.0%	32.8%	21.4%	7.8%	15.3%	12.6%
Mathews	15.4%	37.7%	22.6%	3.6%	11.3%	9.3%	7.9%	33.3%	23.8%	5.9%	16.2%	13.0%
Middlesex	12.4%	33.6%	19.2%	7.3%	17.2%	10.3%	12.3%	32.5%	24.3%	6.7%	15.3%	8.9%
Northumberland	15.9%	31.0%	26.2%	4.7%	13.5%	8.8%	11.9%	31.1%	24.7%	6.9%	16.1%	9.3%
Richmond	25.4%	41.2%	17.7%	5.9%	7.0%	2.8%	20.9%	40.2%	19.9%	6.2%	8.8%	3.9%
Spotsylvania	11.5%	29.5%	22.0%	7.1%	19.0%	10.9%	10.5%	31.7%	21.4%	7.1%	17.9%	11.4%
Stafford	8.5%	26.6%	20.8%	8.8%	21.2%	14.2%	6.7%	23.7%	24.3%	8.4%	22.2%	14.6%
Westmoreland	23.4%	35.3%	19.4%	5.9%	8.5%	7.5%	18.9%	36.3%	20.0%	6.4%	11.5%	6.8%
Fredericksburg city	13.4%	30.2%	19.1%	5.3%	18.5%	13.4%	9.0%	26.9%	21.8%	4.9%	21.2%	16.1%

Source: US Census Bureau, 2006-2010 and 2011-2015 American Community Surveys



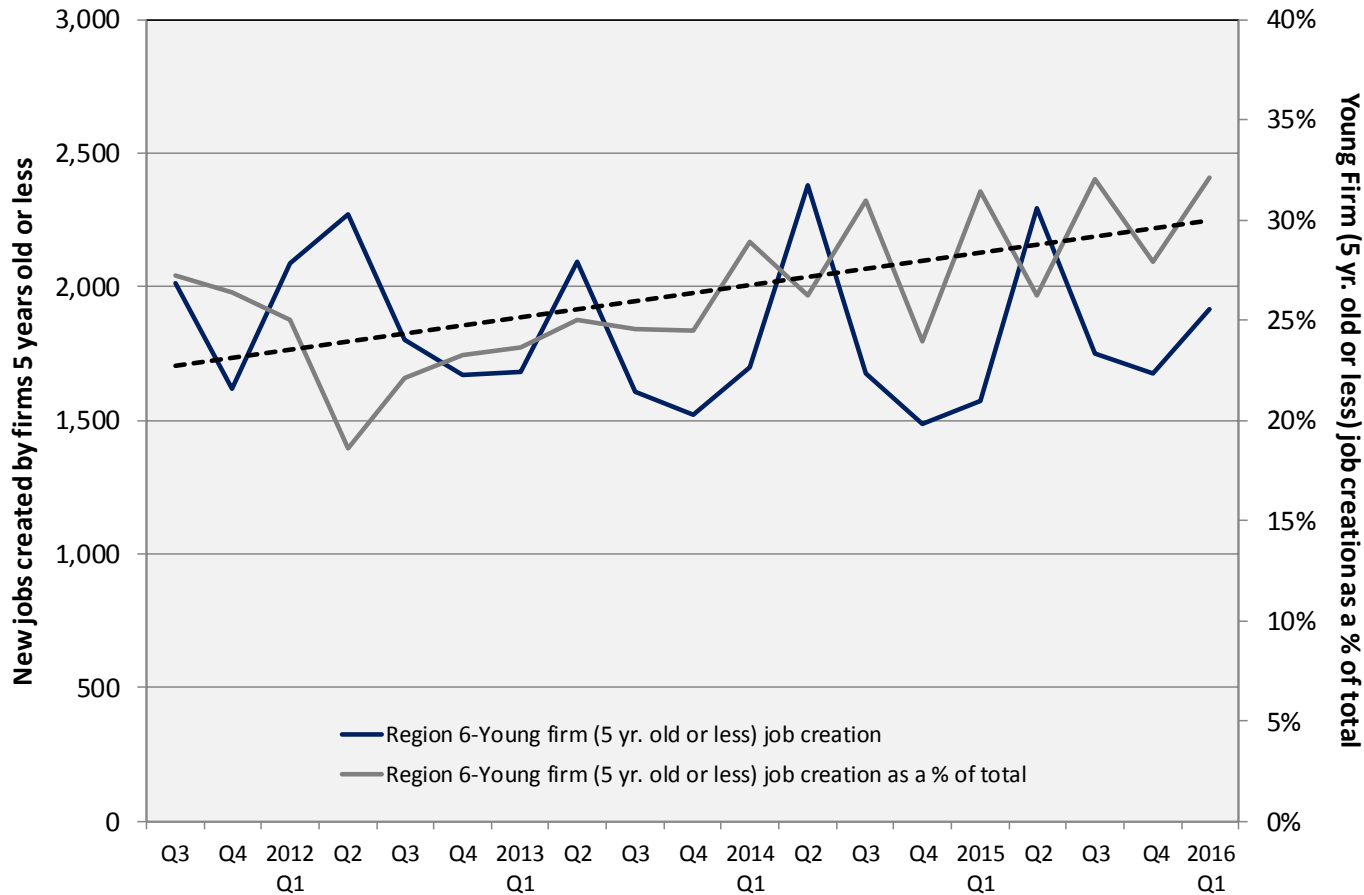
VIRGINIA INITIATIVE FOR
**GROWTH &
OPPORTUNITY**
IN EACH REGION

Firm Growth



VIRGINIA INITIATIVE FOR
**GROWTH &
 OPPORTUNITY**
 IN EACH REGION

Jobs Created by Young Companies (5 years old or less)



Source: US Census Bureau, Longitudinal Employer-Household Dynamics, Quarterly Workforce Indicators



Jobs Created by Young Companies (5 years old or less)

Region 6: Young firm (5 yrs old or less) job creation

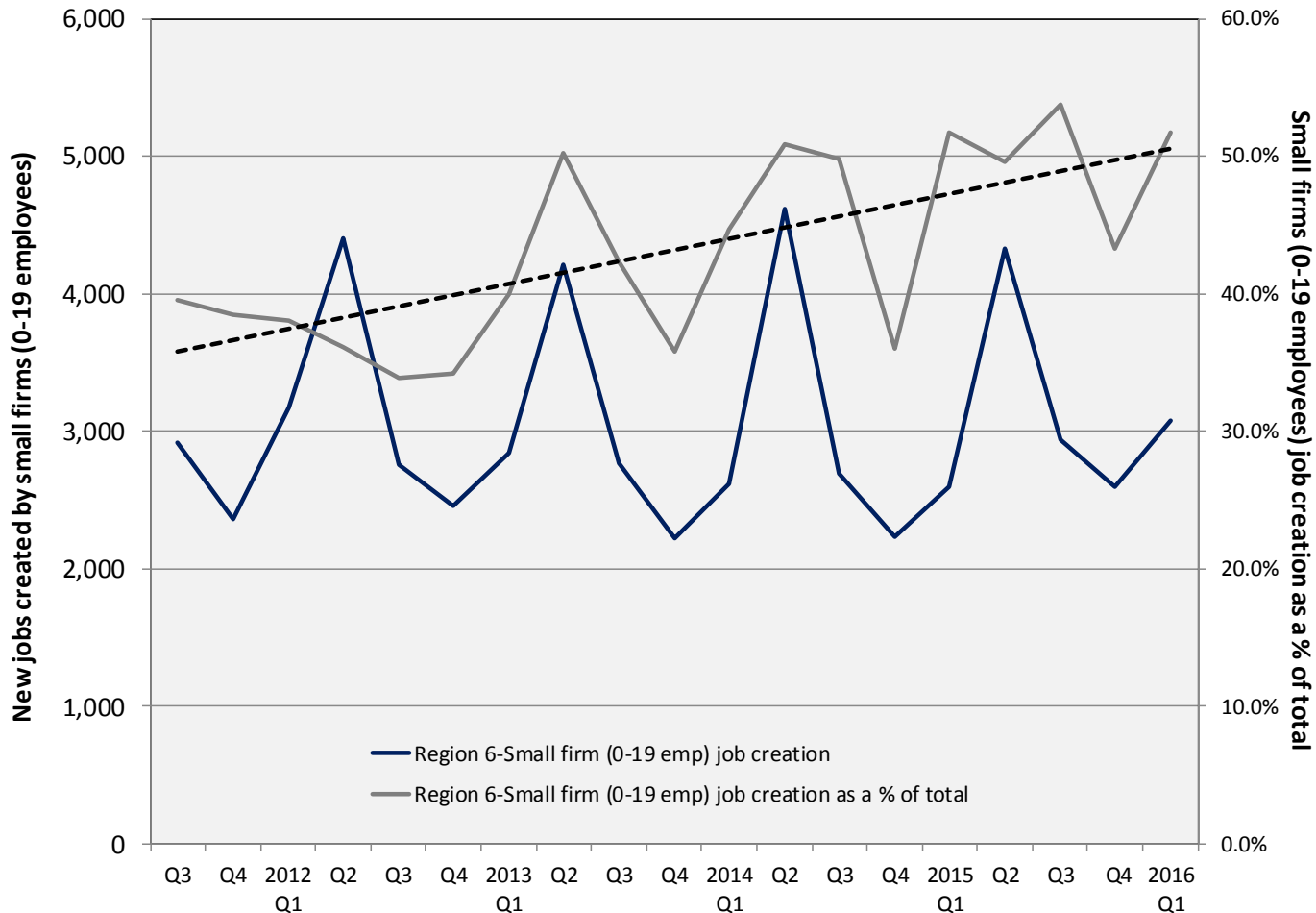
	2012 Average	2015 Average	2012 as a % of Total	2015 as a % of Total
US	1,542,135	1,674,953	25.2%	26.7%
Virginia	42,118	39,288	19.4%	26.2%
Region 6	1,959	1,824	21.8%	28.9%
Caroline	98	79	28.3%	35.1%
Essex	35	33	12.3%	21.5%
Gloucester	152	119	19.4%	30.2%
King and Queen	10	12	21.1%	23.0%
King George	116	76	30.0%	26.0%
King William	29	41	7.4%	24.7%
Lancaster	95	47	22.8%	22.3%
Mathews	25	25	18.8%	32.7%
Middlesex	41	30	17.5%	16.6%
Northumberland	51	56	17.3%	24.6%
Richmond	21	36	14.5%	38.9%
Spotsylvania	505	444	24.1%	26.9%
Stafford	443	482	23.5%	33.2%
Westmoreland	79	57	24.7%	22.0%
Fredericksburg city	260	288	21.4%	33.0%

Source: US Census Bureau, LEHD, QWI



VIRGINIA INITIATIVE FOR
**GROWTH &
 OPPORTUNITY**
 IN EACH REGION

Jobs Created by Small Companies (less than 20 employees)



Source: US Census Bureau, Longitudinal Employer-Household Dynamics, Quarterly Workforce Indicators



Jobs Created by Small Companies

(less than 20 employees)

Region 6: Small firm (0-19 Emp.) job creation

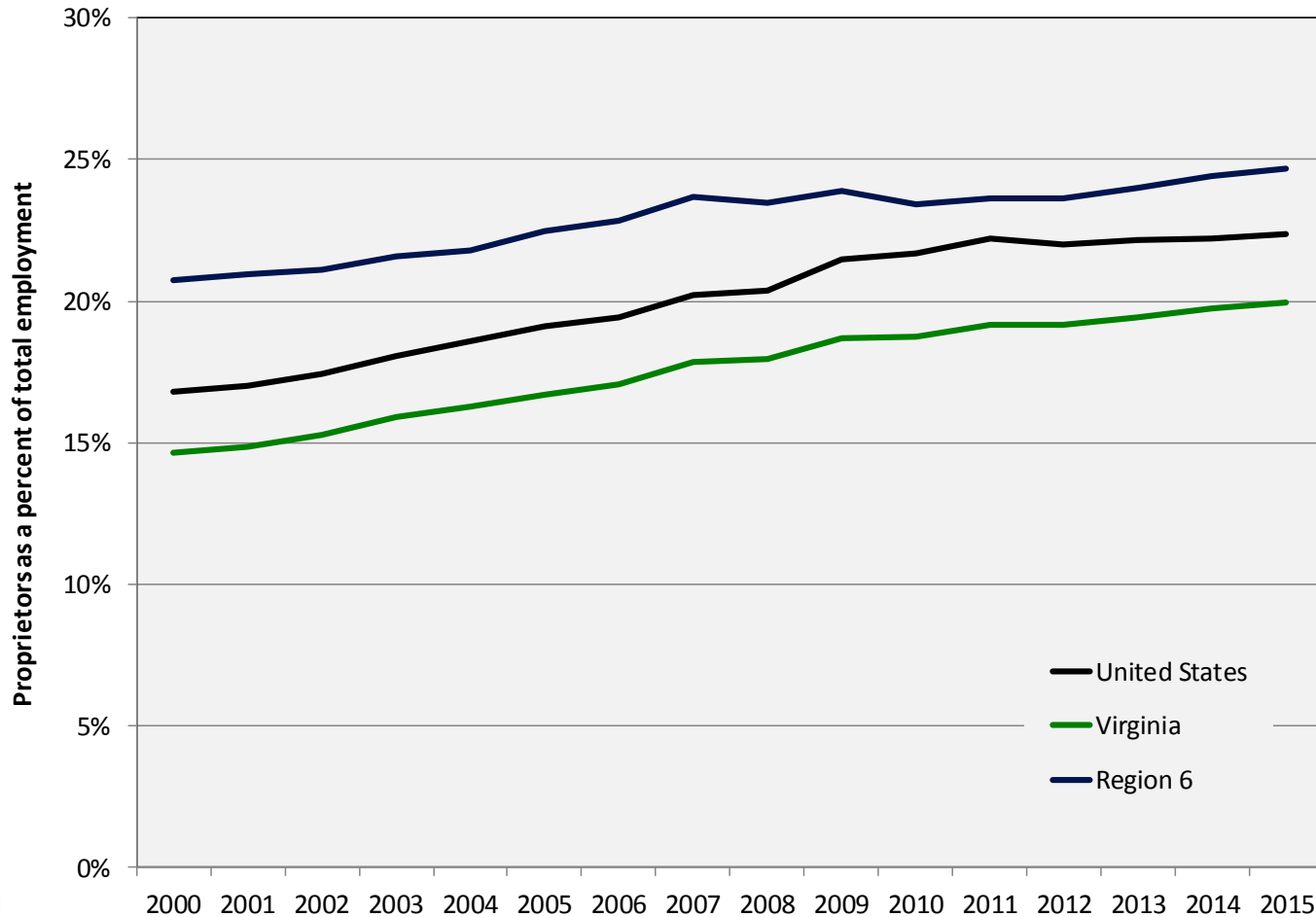
	2012 Average	2015 Average	2012 as a % of Total	2015 as a % of Total
US	2,203,129	2,268,500	36.0%	36.2%
Virginia	58,797	54,683	27.1%	36.4%
Region 6	3,201	3,116	35.7%	49.4%
Caroline	122	128	35.2%	57.2%
Essex	87	74	30.6%	48.1%
Gloucester	266	232	34.0%	58.8%
King and Queen	36	31	78.4%	61.5%
King George	157	151	40.6%	51.4%
King William	86	100	21.9%	59.6%
Lancaster	150	124	36.1%	59.3%
Mathews	73	61	55.6%	80.2%
Middlesex	113	110	47.9%	61.2%
Northumberland	150	151	51.5%	65.7%
Richmond	46	50	32.1%	54.3%
Spotsylvania	744	737	35.5%	44.5%
Stafford	670	665	35.5%	45.8%
Westmoreland	126	129	39.2%	50.0%
Fredericksburg city	376	375	30.9%	42.9%

Source: US Census Bureau, LEHD, QWI



VIRGINIA INITIATIVE FOR
**GROWTH &
OPPORTUNITY**
IN EACH REGION

Sole Proprietorships as a percent of total employment



Source: US Bureau of Economic Analysis



Sole Proprietorships

Proprietors as a percent of total employment: Region 6

	2000 Proprietors	2010 Proprietors	2015 Proprietors	Annual Growth (00-10)	Annual Growth (10-15)	Proprietors as a % of total employment
United States	27,760,800	37,508,700	42,561,400	3.1%	2.1%	22.4%
Virginia	644,573	890,602	1,008,978	3.3%	2.1%	19.9%
Region 6	34,706	47,498	53,847	3.2%	2.1%	24.7%
Caroline	2,987	2,535	2,667	-1.6%	0.8%	30.0%
Essex	923	1,304	1,398	3.5%	1.2%	25.3%
Gloucester	3,508	3,862	3,849	1.0%	-0.1%	27.6%
King and Queen	952	701	790	-3.0%	2.0%	42.8%
King George	3,341	2,314	2,485	-3.6%	1.2%	17.2%
King William	885	1,625	1,831	6.3%	2.0%	31.2%
Lancaster	1,728	2,021	2,128	1.6%	0.9%	30.4%
Mathews	1,060	1,333	1,442	2.3%	1.3%	47.2%
Middlesex	1,101	1,813	1,902	5.1%	0.8%	35.1%
Northumberland	1,428	1,626	1,833	1.3%	2.0%	41.0%
Richmond	759	910	990	1.8%	1.4%	24.2%
Spotsylvania + Fredericksburg, VA*	9,620	13,792	16,693	3.7%	3.2%	21.2%
Stafford	4,811	11,656	13,711	9.3%	2.7%	23.3%
Westmoreland	1,603	2,006	2,128	2.3%	1.0%	35.9%

Source: US Bureau of Economic Analysis



VIRGINIA INITIATIVE FOR
**GROWTH &
OPPORTUNITY**
IN EACH REGION

Thank You

Terry L. Clower Ph.D. – tclower@gmu.edu

Mark C. White Ph.D. – mwhite@gmu.edu

Spencer A. Shanholtz – sshanhol@gmu.edu



cra.gmu.edu

[@GMU_CRA](#)