



VIRGINIA INITIATIVE FOR
**GROWTH &
OPPORTUNITY**
IN EACH REGION

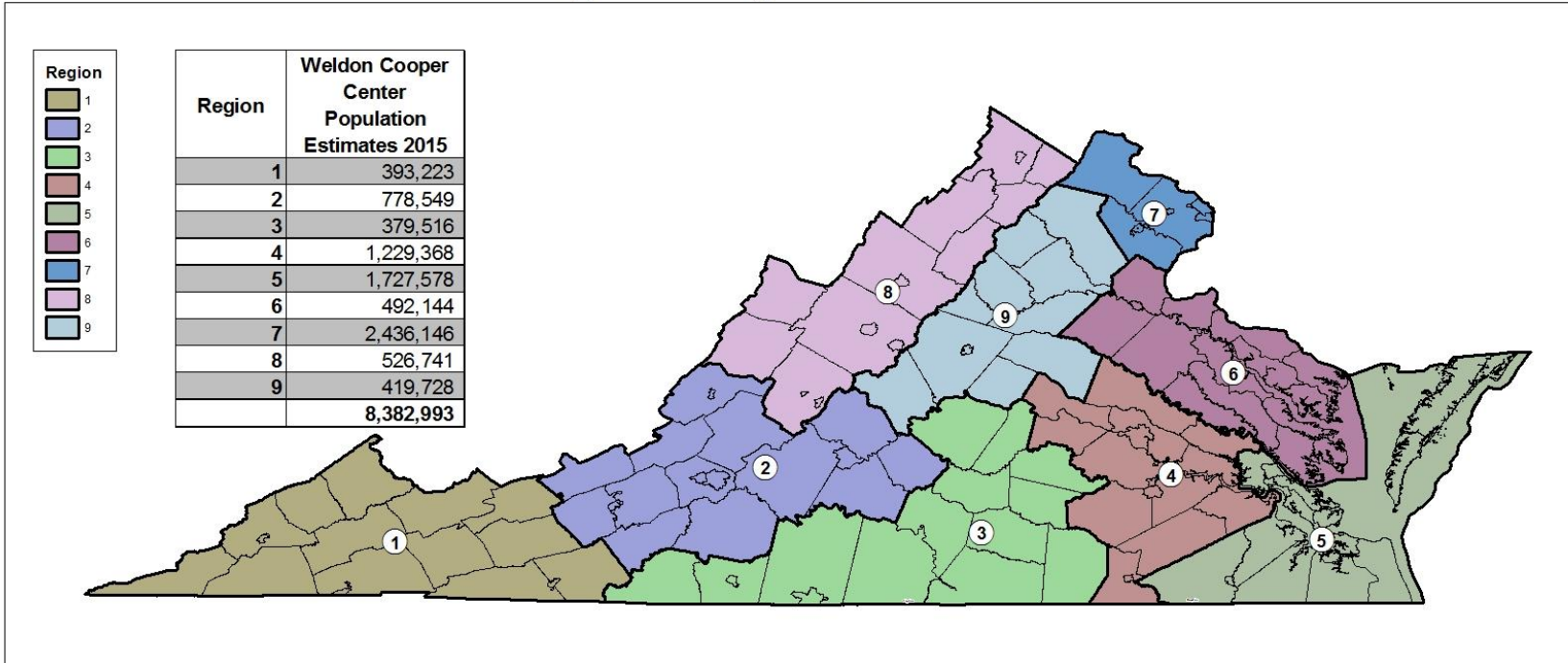
REGIONAL BASELINE MEASURES
REGION 9





VIRGINIA INITIATIVE FOR
**GROWTH &
OPPORTUNITY**
IN EACH REGION

GO Virginia Regional Boundaries



0 15 30 60 90 120 Miles

Source: US Census, VA PDC



12/5/2016



VIRGINIA INITIATIVE FOR
**GROWTH &
OPPORTUNITY**
IN EACH REGION

Region 9

Counties of:

- Albemarle, Culpeper, Fauquier, Fluvanna, Greene, Louisa, Madison, Nelson, Orange, Rappahannock

City of:

- Charlottesville



VIRGINIA INITIATIVE FOR
**GROWTH &
OPPORTUNITY**
IN EACH REGION

Data Included

- **Population**
 - Population Trends
- **Income and Wealth**
 - Per Capita Income
 - Percent of Population in Poverty
- **Employment**
 - Total Employment
 - Unemployment Rate
- **Industry**
 - Employment Trends by Industry Sector
 - Relative Concentration (Location Quotients) by Sector
 - Wages by Industry Sector



VIRGINIA INITIATIVE FOR
**GROWTH &
OPPORTUNITY**
IN EACH REGION

Data Included

- **Labor Force**
 - Labor Force Participation Rate
 - Commuting inflow/outflow
 - Educational Attainment
- **Firm Growth**
 - Jobs Created by Young Companies (5 years old or less)
 - Jobs Created by Small Companies (less than 20 employees)
 - Sole Proprietorships



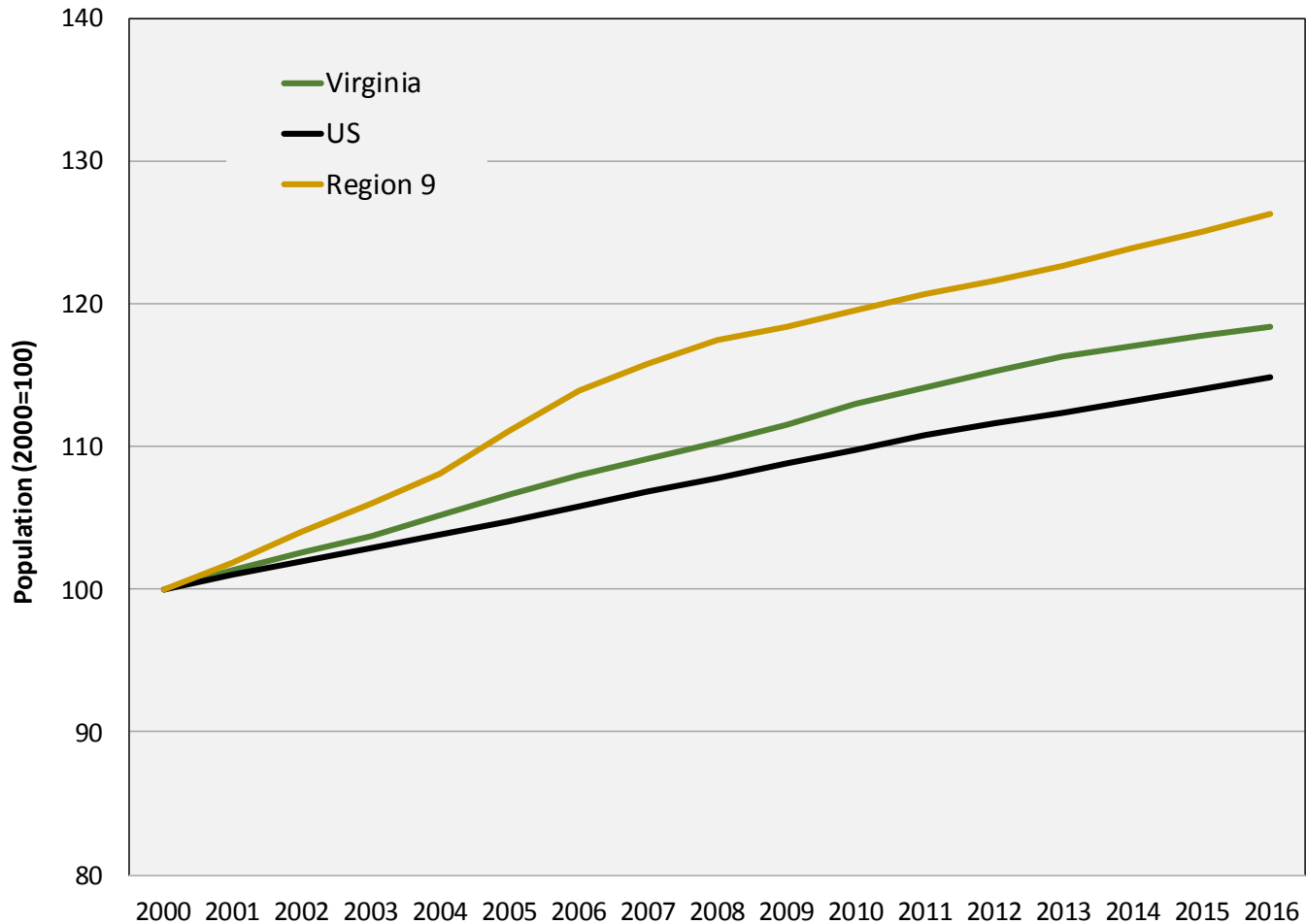
VIRGINIA INITIATIVE FOR
**GROWTH &
OPPORTUNITY**
IN EACH REGION

Population



VIRGINIA INITIATIVE FOR
**GROWTH &
OPPORTUNITY**
IN EACH REGION

Population Trends



Source: US Census Bureau, Population Estimates Programs



Population Trends

Population Trends: Region 9

	2000	2010	2016	Annual Growth (00-10)	Annual Growth (10-16)
United States	281,424,600	308,745,538	323,127,513	0.9%	0.8%
Virginia	7,105,817	8,025,773	8,411,808	1.2%	0.8%
Region 9	336,206	401,942	424,688	1.8%	0.9%
Albemarle	83,532	99,240	106,878	1.7%	1.2%
Culpeper	34,442	46,850	50,083	3.1%	1.1%
Fauquier	55,470	65,481	69,069	1.7%	0.9%
Fluvanna	20,191	25,760	26,271	2.5%	0.3%
Greene	15,454	18,482	19,371	1.8%	0.8%
Louisa	25,819	33,359	35,236	2.6%	0.9%
Madison	12,535	13,287	13,078	0.6%	-0.3%
Nelson	14,451	14,992	14,869	0.4%	-0.1%
Orange	25,981	33,480	35,533	2.6%	1.0%
Rappahannock	6,980	7,500	7,388	0.7%	-0.3%
Charlottesville city	41,351	43,511	46,912	0.5%	1.3%

Source: US Census Bureau, Population Estimates Programs



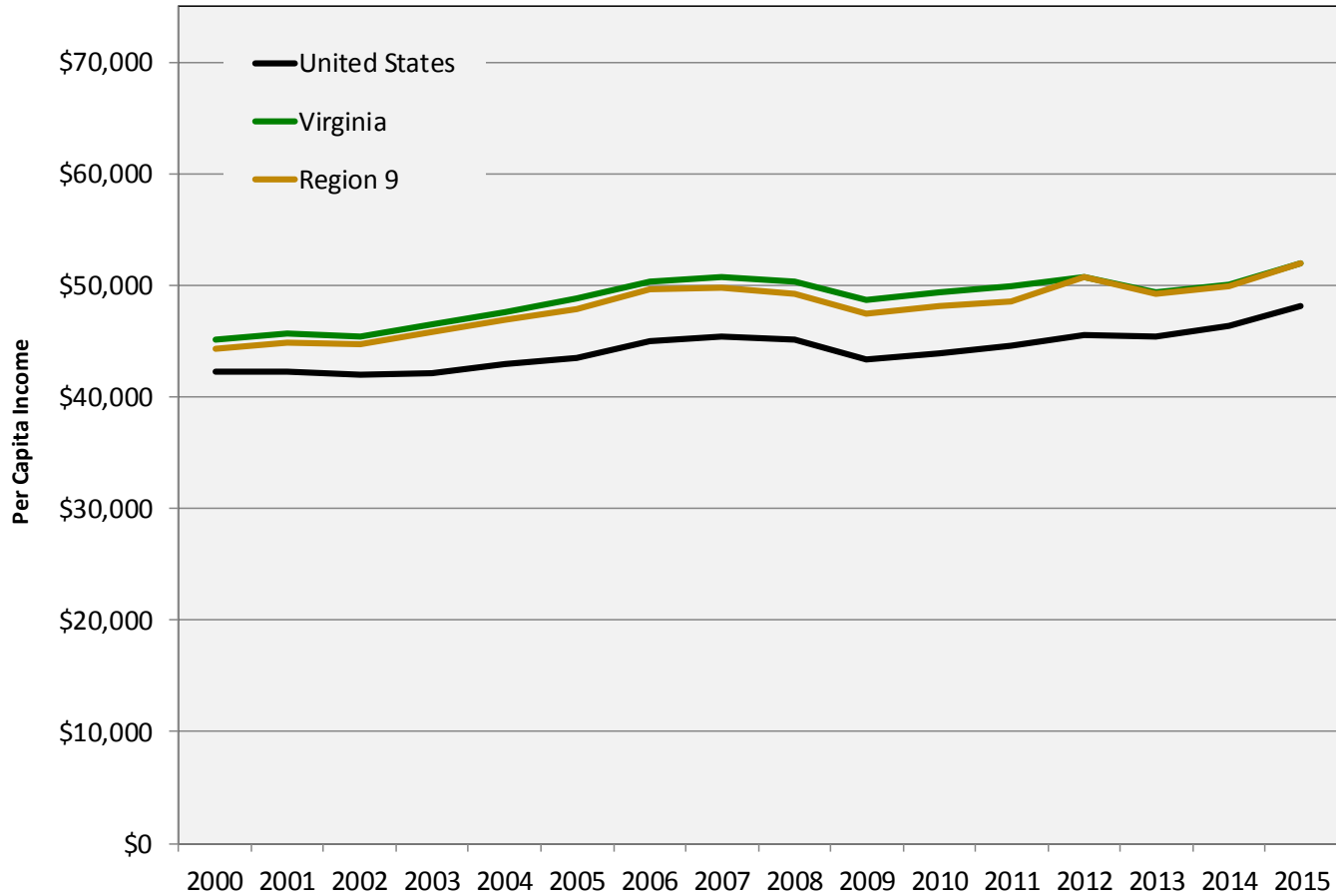
VIRGINIA INITIATIVE FOR
**GROWTH &
OPPORTUNITY**
IN EACH REGION

Income and Wealth



VIRGINIA INITIATIVE FOR
**GROWTH &
OPPORTUNITY**
IN EACH REGION

Per Capita Income



Source: US Bureau of Economic Analysis, PCI adjusted for 2015 dollars



Per Capita Income

Per Capita Income: Region 9

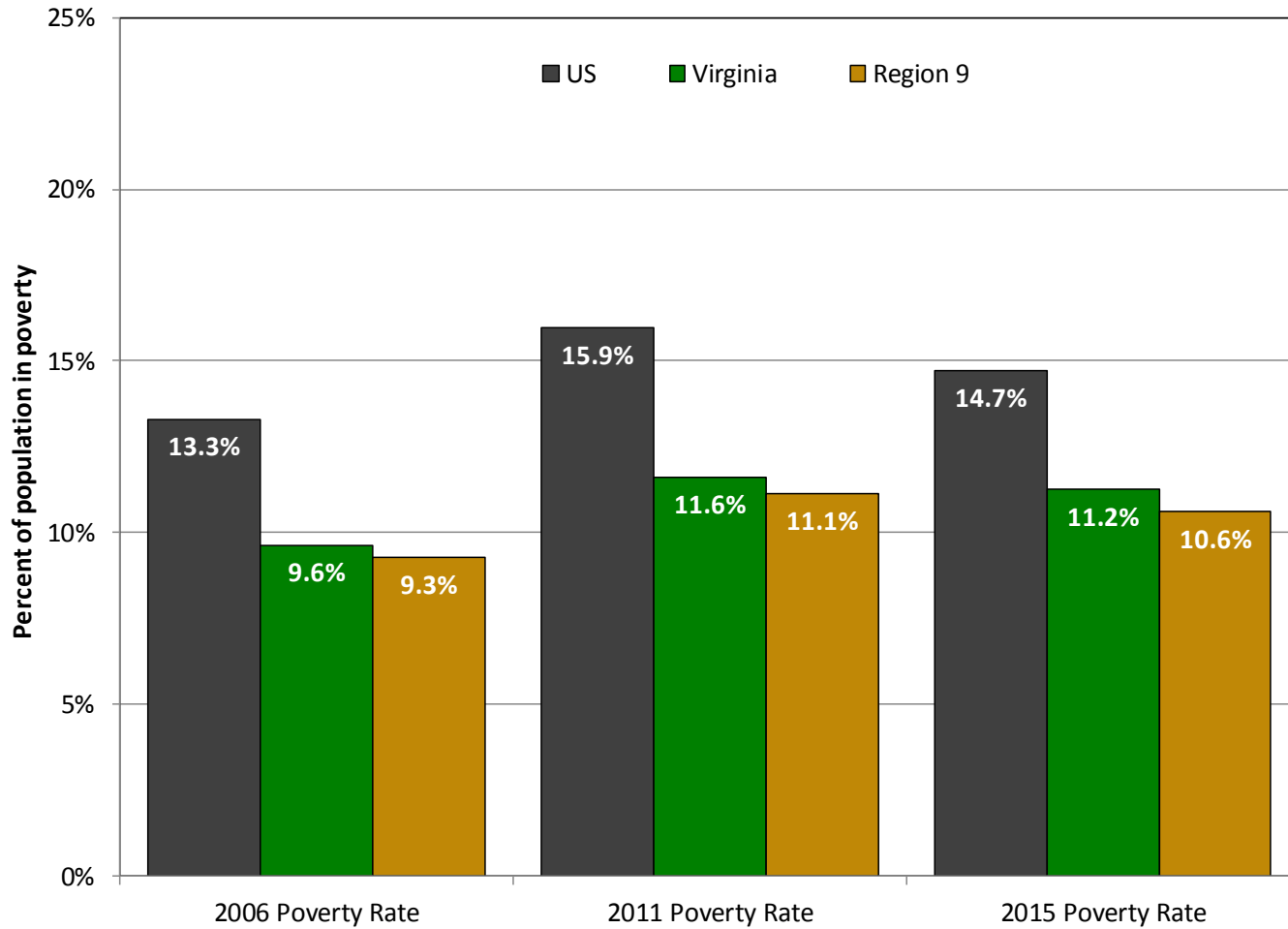
	2000	2010	2015	Annual Growth (00-10)	Annual Growth (10-15)
United States	\$42,231	\$43,902	\$48,112	0.4%	1.5%
Virginia	\$45,144	\$49,421	\$52,052	0.9%	0.9%
Region 9	\$44,284	\$48,173	\$52,038	0.8%	1.3%
Albemarle + Charlottesville, VA*	\$49,244	\$54,763	\$60,294	1.1%	1.6%
Culpeper	\$37,225	\$39,719	\$41,724	0.7%	0.8%
Fauquier	\$57,000	\$59,810	\$61,780	0.5%	0.5%
Fluvanna	\$33,297	\$37,401	\$39,659	1.2%	1.0%
Greene	\$31,653	\$36,644	\$39,681	1.5%	1.3%
Louisa	\$37,419	\$39,155	\$42,445	0.5%	1.4%
Madison	\$34,085	\$35,853	\$43,775	0.5%	3.4%
Nelson	\$36,249	\$40,028	\$45,055	1.0%	2.0%
Orange	\$35,833	\$40,280	\$42,166	1.2%	0.8%
Rappahannock	\$40,870	\$52,824	\$57,071	2.6%	1.3%

Source: US Bureau of Economic Analysis, PCI adjusted for 2015 dollars



VIRGINIA INITIATIVE FOR
**GROWTH &
OPPORTUNITY**
IN EACH REGION

Percent of Population in Poverty



Source: US Census Bureau, Small Area Income and Poverty Estimates



Percent of Population in Poverty

Poverty Trends: Region 9

	2006 Poverty Rate	2011 Poverty Rate	2015 Poverty Rate
United States	13.3%	15.9%	14.7%
Virginia	9.6%	11.6%	11.2%
Region 9	9.3%	11.1%	10.6%
Albemarle	7.1%	9.7%	9.5%
Culpeper	8.4%	11.7%	10.2%
Fauquier	5.3%	6.3%	6.8%
Fluvanna	6.7%	7.6%	7.8%
Greene	7.7%	9.2%	9.3%
Louisa	9.9%	10.8%	10.6%
Madison	10.2%	11.9%	10.4%
Nelson	11.3%	13.6%	13.9%
Orange	7.8%	11.9%	10.4%
Rappahannock	7.8%	10.0%	9.8%
Charlottesville city	24.0%	23.0%	20.7%

Source: US Census Bureau, Small Area Income and Poverty Estimates



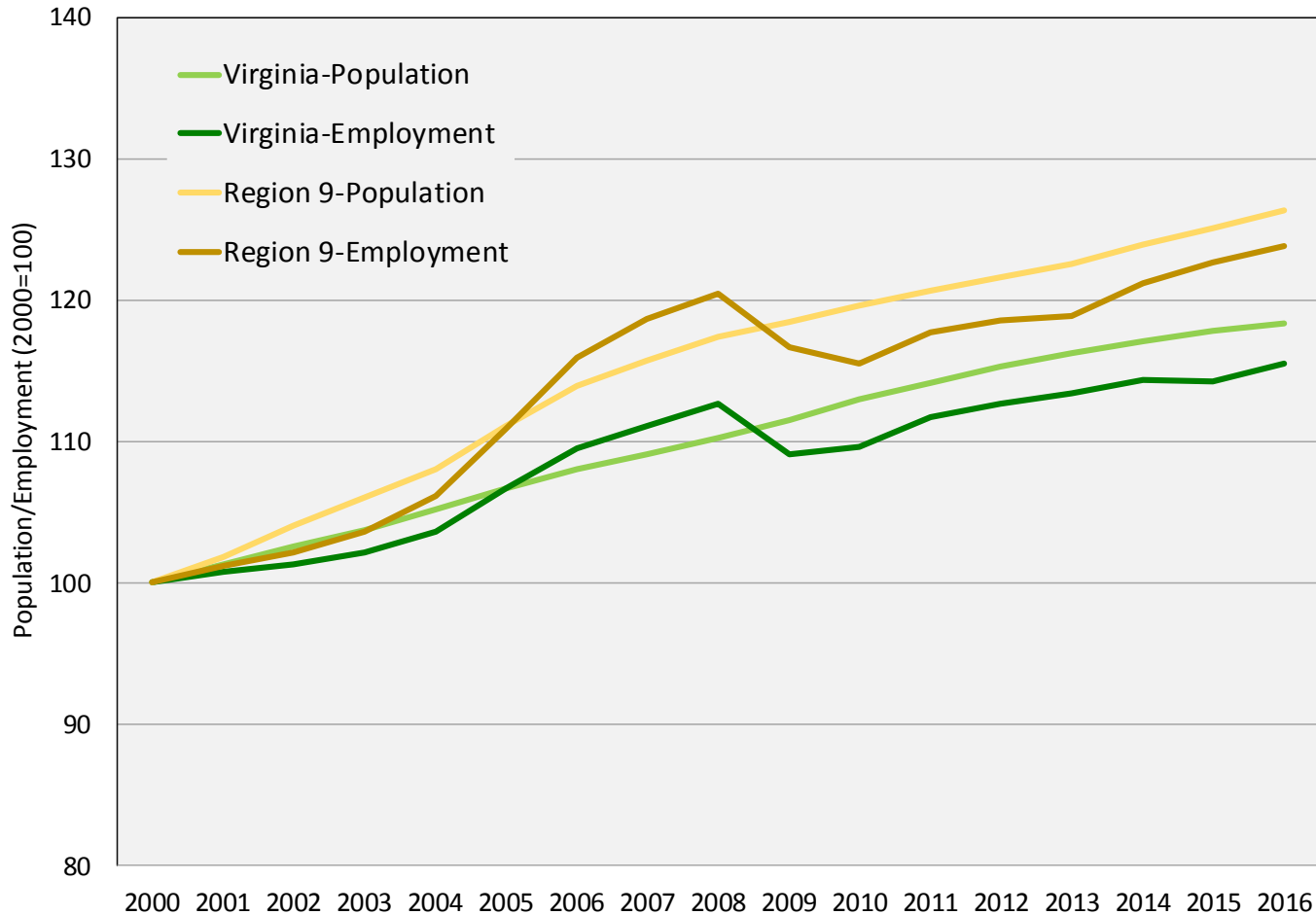
VIRGINIA INITIATIVE FOR
**GROWTH &
OPPORTUNITY**
IN EACH REGION

Employment



VIRGINIA INITIATIVE FOR
**GROWTH &
OPPORTUNITY**
IN EACH REGION

Total Employment



Source: US Census Bureau Population Estimates, US Bureau of Labor Statistics Local Area Unemployment Statistics (2016 preliminary)



Total Employment

Employment Trends: Region 9

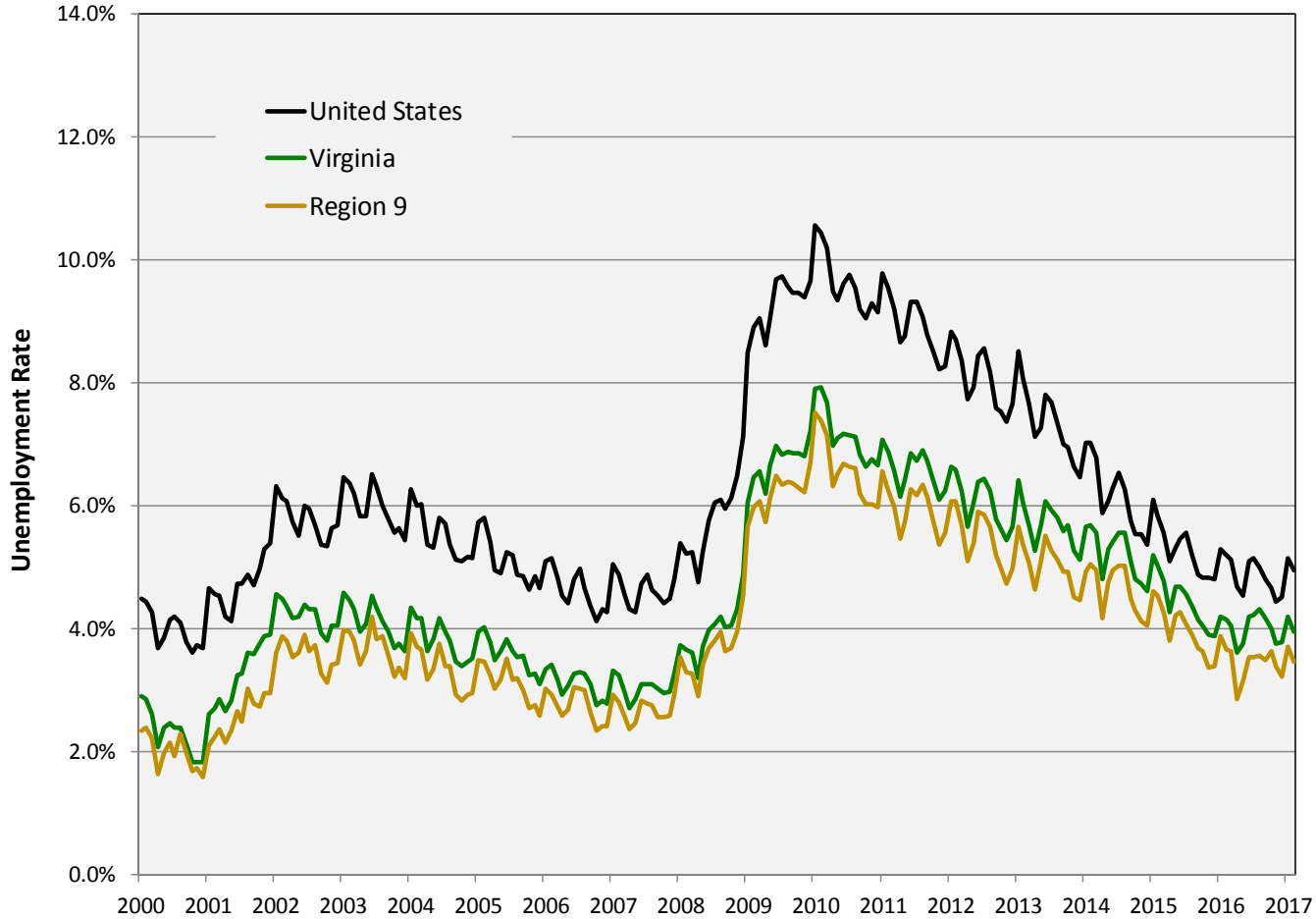
	2000	2010	2016	Annual Growth (00-10)	Annual Growth (10-16)
United States	136,891,000	139,064,000	151,436,000	0.2%	1.4%
Virginia	3,522,865	3,860,386	4,070,260	0.9%	0.9%
Region 9	168,280	194,342	208,404	1.5%	1.2%
Albemarle	42,810	47,937	53,019	1.1%	1.7%
Culpeper	16,604	21,590	22,363	2.7%	0.6%
Fauquier	29,747	33,552	34,627	1.2%	0.5%
Fluvanna	10,024	12,253	13,067	2.0%	1.1%
Greene	8,245	9,007	9,743	0.9%	1.3%
Louisa	12,578	16,513	18,224	2.8%	1.7%
Madison	6,443	6,717	6,865	0.4%	0.4%
Nelson	6,869	7,034	7,176	0.2%	0.3%
Orange	12,474	14,178	15,573	1.3%	1.6%
Rappahannock	3,683	3,771	3,604	0.2%	-0.8%
Charlottesville city	18,803	21,790	24,144	1.5%	1.7%

Source: US BLS Local Area Unemployment Statistics (2016 preliminary)



VIRGINIA INITIATIVE FOR
**GROWTH &
OPPORTUNITY**
IN EACH REGION

Unemployment Rate



Source: US Bureau of Labor Statistics, Local Area Unemployment Statistics



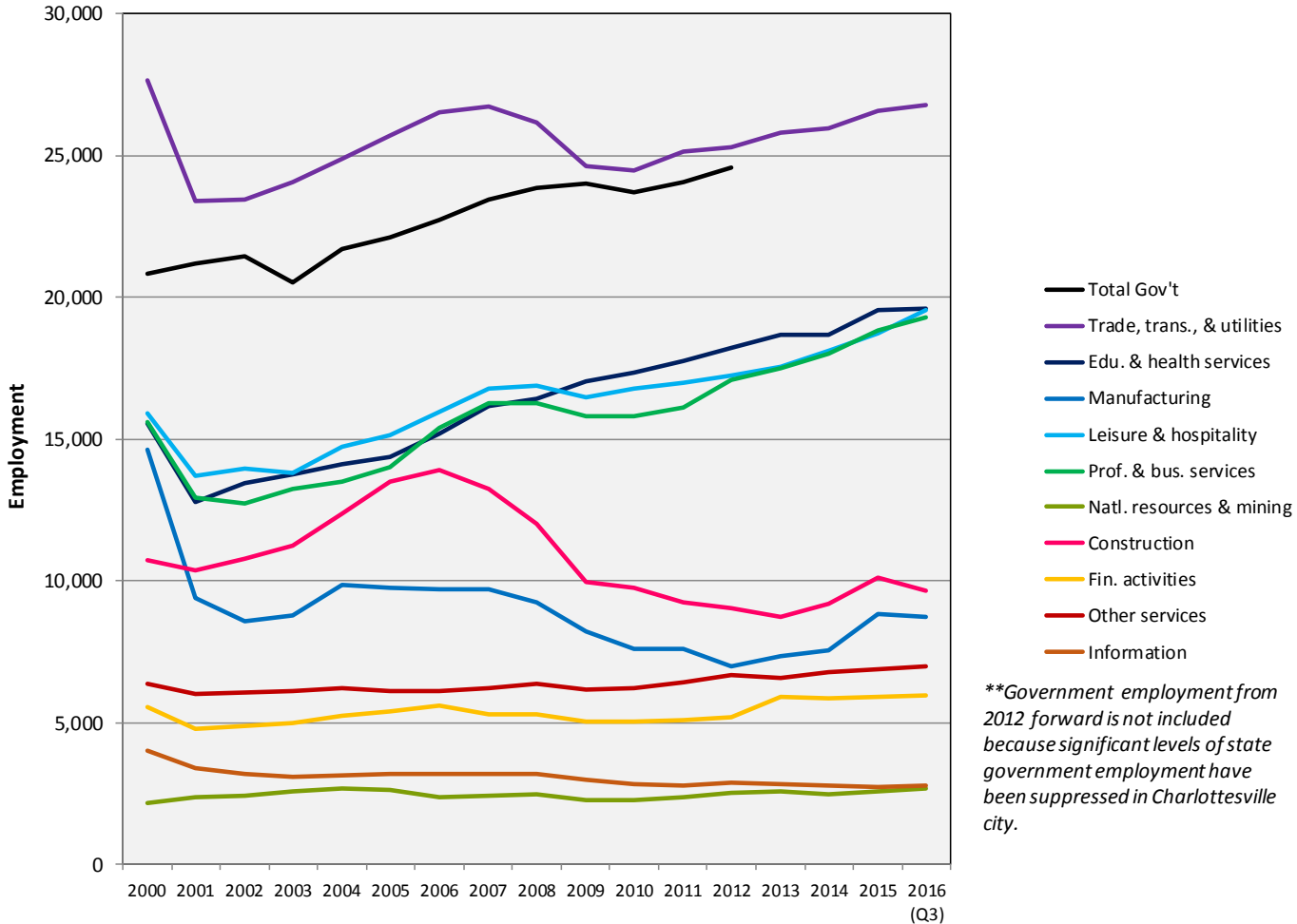
VIRGINIA INITIATIVE FOR
**GROWTH &
OPPORTUNITY**
IN EACH REGION

Industry



VIRGINIA INITIATIVE FOR
**GROWTH &
 OPPORTUNITY**
 IN EACH REGION

Employment Trends by Industry Sector



Source: US Bureau of Labor Statistics, Quarterly Census of Employment and Wages



Employment Trends by Industry Sector

Region 9: Industry Sectors, 2015*

Sector	Employment#	LQ	Region 9 Avg Wage	US Avg Wage
Trade, transportation, and utilities	26,585	0.85	\$36,664	\$44,321
Education and health services	19,553	0.79	\$46,626	\$47,383
Professional and business services	18,833	0.82	\$59,310	\$69,270
Leisure and hospitality	18,718	1.05	\$19,348	\$21,807
Local government	10,739	0.66	\$36,915	\$47,573
Construction	10,130	1.34	\$47,605	\$57,009
Manufacturing	8,833	0.61	\$56,122	\$64,305
Other services	6,893	1.36	\$40,395	\$35,116
Financial activities	5,919	0.64	\$67,242	\$87,915
Information	2,742	0.85	\$103,015	\$95,098
Natural resources and mining	2,549	1.08	\$34,889	\$58,461
Federal government	2,352	0.73	\$93,920	\$77,900
State government	1,889	0.35	\$41,110	\$55,878

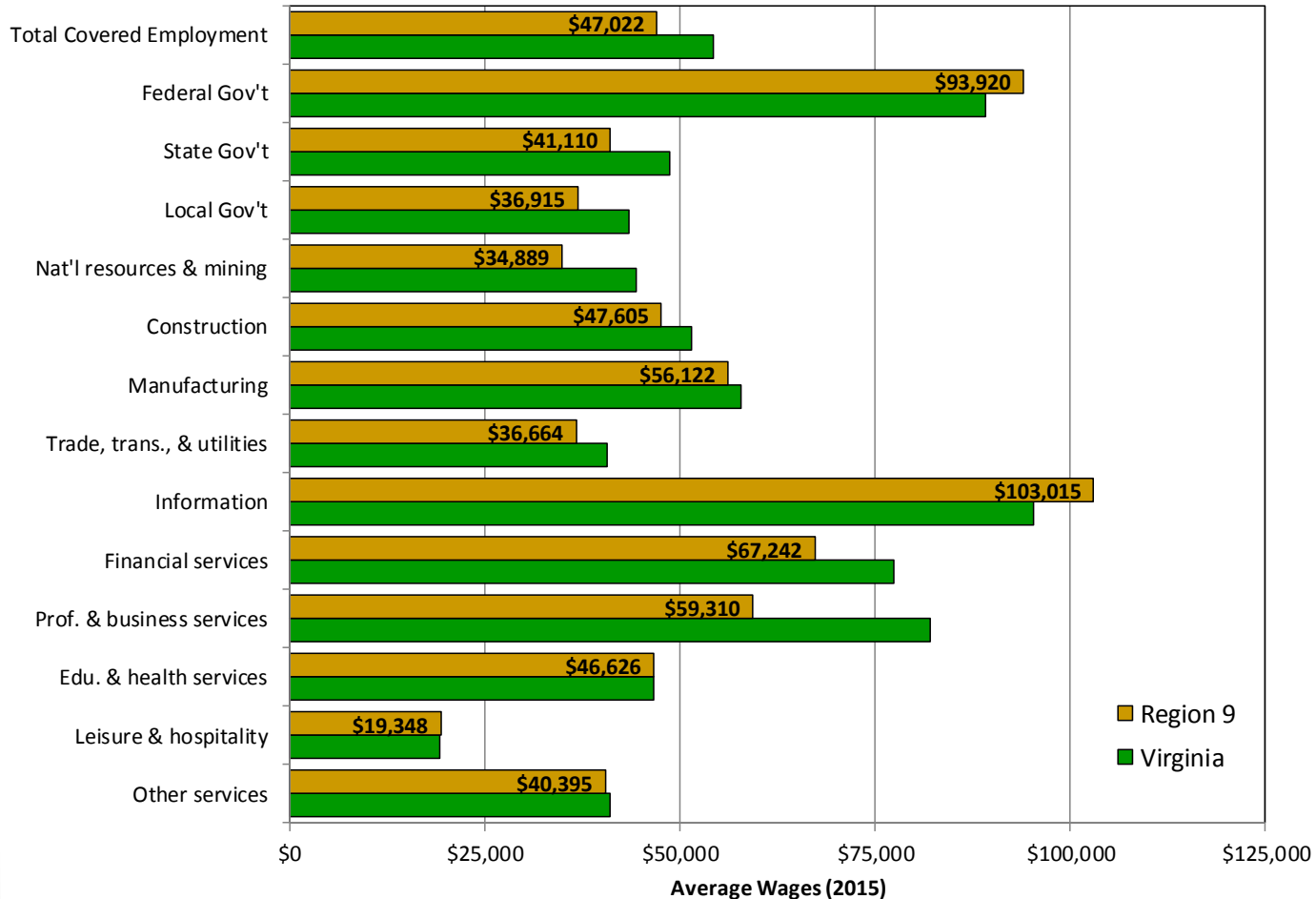
Source: US Bureau of Labor Statistics, Quarterly Census of Employment and Wages

*2015 is the most recently available complete year

#Does not include suppressed employment



Industry Wages by Sector



Source: US Bureau of Labor Statistics, Quarterly Census of Employment and Wages



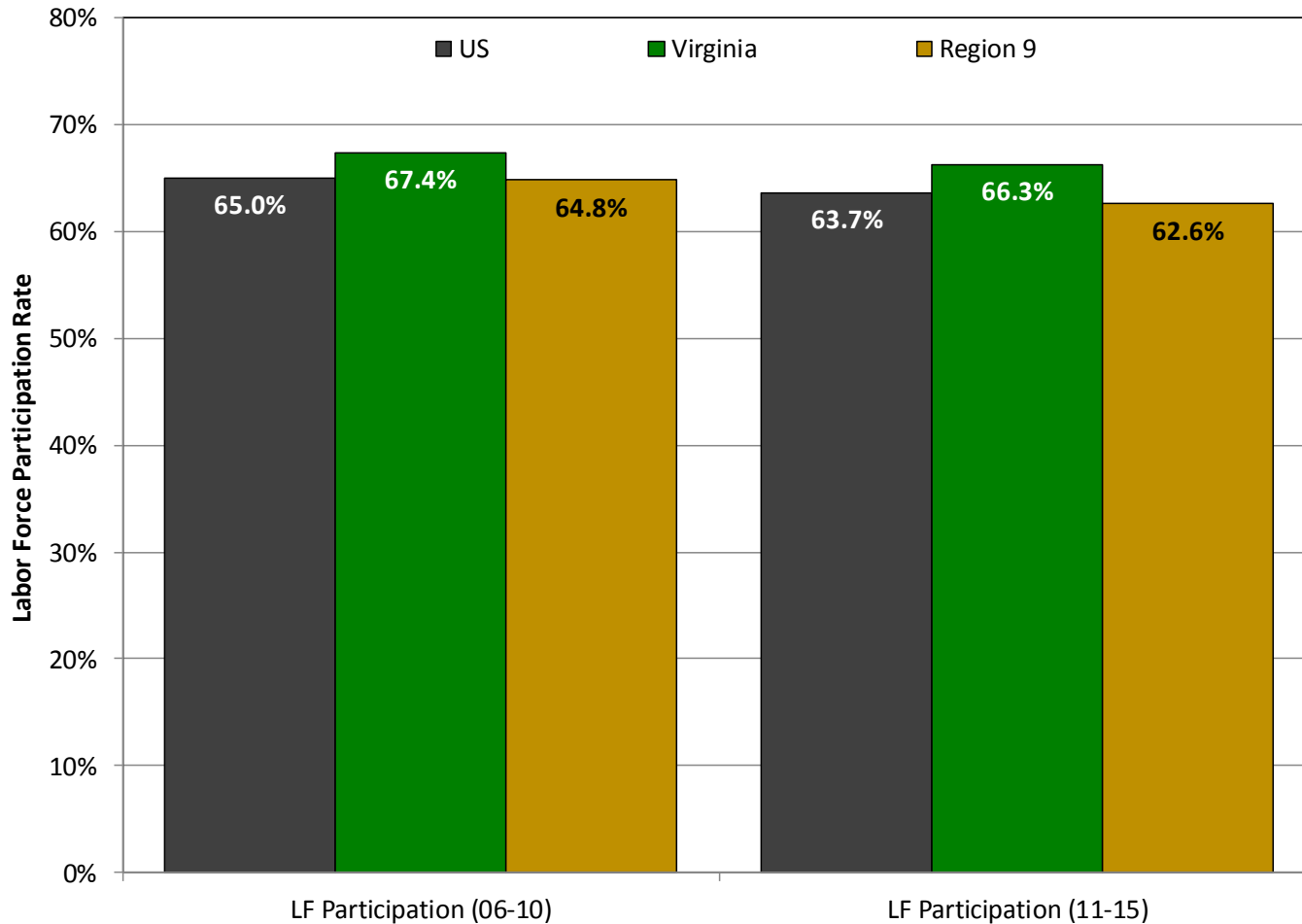
VIRGINIA INITIATIVE FOR
**GROWTH &
OPPORTUNITY**
IN EACH REGION

Labor Force



VIRGINIA INITIATIVE FOR
**GROWTH &
OPPORTUNITY**
IN EACH REGION

Labor Force Participation Rate



Source: US Census Bureau, 2006-2010 and 2011-2015 American Community Surveys



Labor Force Participation Rate

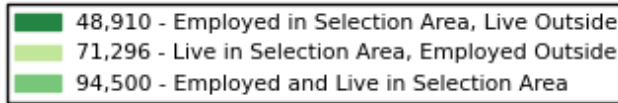
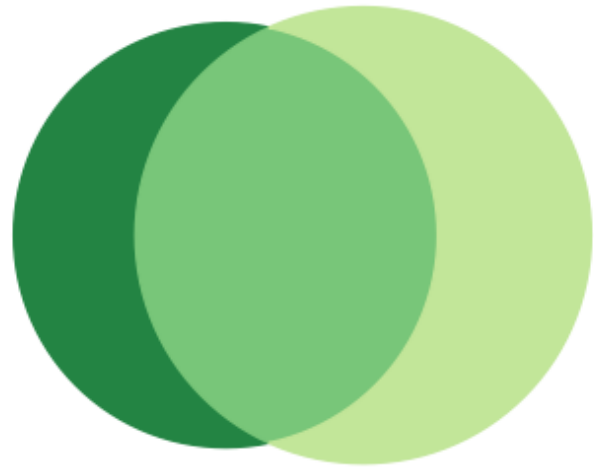
Labor Force Participation Rate: Region 9

	LF Participation (06-10)	LF Participation (11-15)
United States	65.0%	63.7%
Virginia	67.4%	66.3%
Region 9	64.8%	62.6%
Albemarle	64.5%	60.2%
Culpeper	67.1%	63.9%
Fauquier	70.7%	68.5%
Fluvanna	62.4%	60.7%
Greene	68.7%	65.1%
Louisa	64.5%	63.4%
Madison	65.7%	59.8%
Nelson	60.4%	57.7%
Orange	60.2%	58.7%
Rappahannock	63.4%	58.7%
Charlottesville city	60.0%	63.6%

Source: US Census Bureau, 2006-2010 and 2011-2015 American Community Surveys

Commuting (Inflow/Outflow)

Inflow/Outflow Job Counts in 2014



Inflow/Outflow Job Counts (Primary Jobs): Region 9

	2014	
	Count	Share
Employed in the Selection Area	143,410	100.00%
Employed in the Selection Area but Living Outside	48,910	34.10%
Employed and Living in the Selection Area	94,500	65.90%
Living in the Selection Area	165,796	100.00%
Living in the Selection Area but Employed Outside	71,296	43.00%
Living and Employed in the Selection Area	94,500	57.00%

Source: US Census Bureau, Longitudinal Employer-Household Dynamics OnTheMap, 2014



Commuting (Inflow/Outflow)

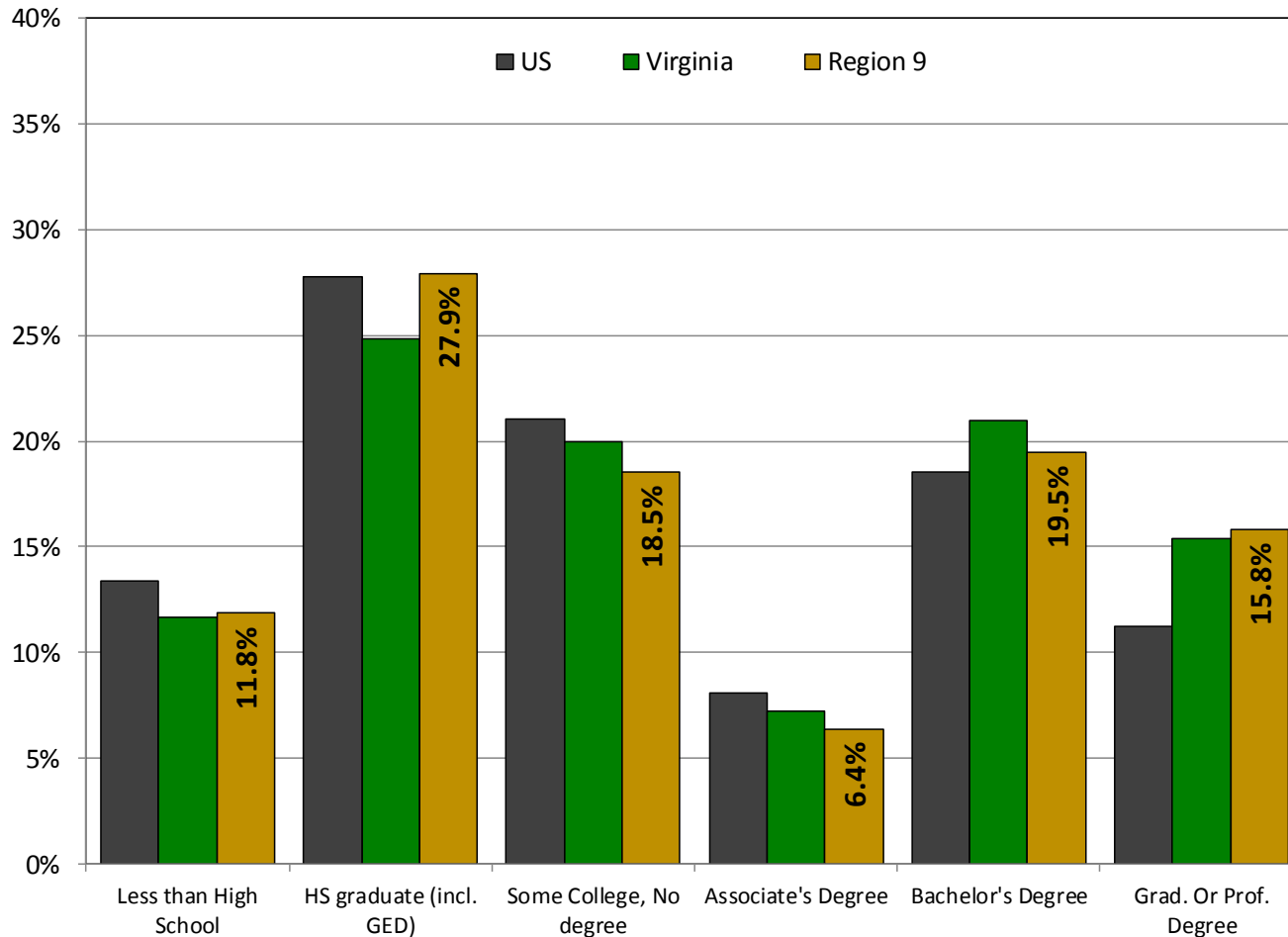
Commuting Patterns: Region 9

	Employed in Selection Area	Employed in the Selection Area but Living Outside		Employed and Living in the Selection Area		Living in the Selection Area	Living in the Selection Area but Employed Outside		Living and Employed in the Selection Area	
Virginia	3,313,939	286,033	8.6%	3,027,906	91.4%	3,377,666	349,760	10.4%	3,027,906	89.6%
Region 9	143,410	48,910	34.1%	94,500	65.9%	165,796	71,296	43.0%	94,500	57.0%
Albemarle	44,877	29,273	65.2%	15,604	34.8%	40,359	24,755	61.3%	15,604	38.7%
Culpeper	14,365	8,637	60.1%	5,728	39.9%	19,065	13,337	70.0%	5,728	30.0%
Fauquier	19,343	11,549	59.7%	7,794	40.3%	33,675	25,881	76.9%	7,794	23.1%
Fluvanna	3,962	2,372	59.9%	1,590	40.1%	10,236	8,646	84.5%	1,590	15.5%
Greene	2,691	1,626	60.4%	1,065	39.6%	7,213	6,148	85.2%	1,065	14.8%
Louisa	7,281	4,775	65.6%	2,506	34.4%	11,486	8,980	78.2%	2,506	21.8%
Madison	2,819	1,497	53.1%	1,322	46.9%	5,788	4,466	77.2%	1,322	22.8%
Nelson	3,502	1,903	54.3%	1,599	45.7%	6,031	4,432	73.5%	1,599	26.5%
Orange	8,665	5,350	61.7%	3,315	38.3%	12,553	9,238	73.6%	3,315	26.4%
Rappahannock	1,197	663	55.4%	534	44.6%	2,752	2,218	80.6%	534	19.4%
Charlottesville city	34,708	28,514	82.2%	6,194	17.8%	16,638	10,444	62.8%	6,194	37.2%

Source: US Census Bureau, Longitudinal Employer-Household Dynamics OnTheMap, 2014



Educational Attainment



Source: US Census Bureau, 2011-2015 American Community Survey



Educational Attainment

Educational Attainment: Region 9

	2006-2010						2011-2015					
	Less than High School	HS graduate (incl. GED)	Some College, No degree	Associate's Degree	Bachelor's Degree	Grad. Or Prof. Degree	Less than High School	HS graduate (incl. GED)	Some College, No degree	Associate's Degree	Bachelor's Degree	Grad. Or Prof. Degree
United States	14.9%	29.0%	20.6%	7.5%	17.6%	10.3%	13.3%	27.8%	21.1%	8.1%	18.5%	11.2%
Virginia	13.9%	26.0%	19.6%	6.7%	19.9%	13.9%	11.7%	24.8%	19.9%	7.3%	21.0%	15.4%
Region 9	14.4%	28.2%	18.7%	5.9%	18.5%	14.3%	11.8%	27.9%	18.5%	6.4%	19.5%	15.8%
Albemarle	9.2%	18.9%	15.2%	5.2%	25.9%	25.7%	8.7%	18.2%	15.1%	6.4%	25.4%	26.2%
Culpeper	17.5%	34.1%	20.4%	6.4%	13.6%	8.0%	16.2%	34.1%	20.8%	6.9%	14.9%	7.0%
Fauquier	10.2%	29.1%	22.2%	7.6%	19.0%	11.9%	8.8%	28.5%	22.0%	7.2%	20.5%	13.0%
Fluvanna	14.5%	30.0%	21.0%	8.7%	17.0%	8.8%	11.3%	28.4%	20.5%	8.2%	19.0%	12.5%
Greene	20.5%	35.4%	18.5%	5.6%	12.8%	7.3%	15.2%	34.9%	19.1%	7.0%	15.7%	8.0%
Louisa	19.4%	37.9%	18.8%	6.0%	11.9%	6.0%	17.2%	37.0%	18.7%	6.5%	13.0%	7.6%
Madison	19.7%	34.8%	20.1%	4.7%	12.2%	8.5%	16.9%	36.4%	17.6%	5.8%	14.4%	8.8%
Nelson	22.3%	32.5%	17.8%	4.5%	14.0%	8.9%	16.1%	33.6%	15.9%	6.2%	14.4%	13.8%
Orange	16.5%	34.2%	22.0%	5.8%	15.1%	6.4%	12.1%	34.7%	22.0%	6.1%	15.2%	9.8%
Rappahannock	20.2%	22.8%	16.0%	3.6%	23.5%	13.9%	13.5%	25.6%	19.7%	6.1%	19.9%	15.2%
Charlottesville city	14.8%	19.9%	15.2%	3.4%	21.6%	25.0%	9.8%	22.2%	14.9%	3.3%	23.3%	26.5%

Source: US Census Bureau, 2006-2010 and 2011-2015 American Community Surveys



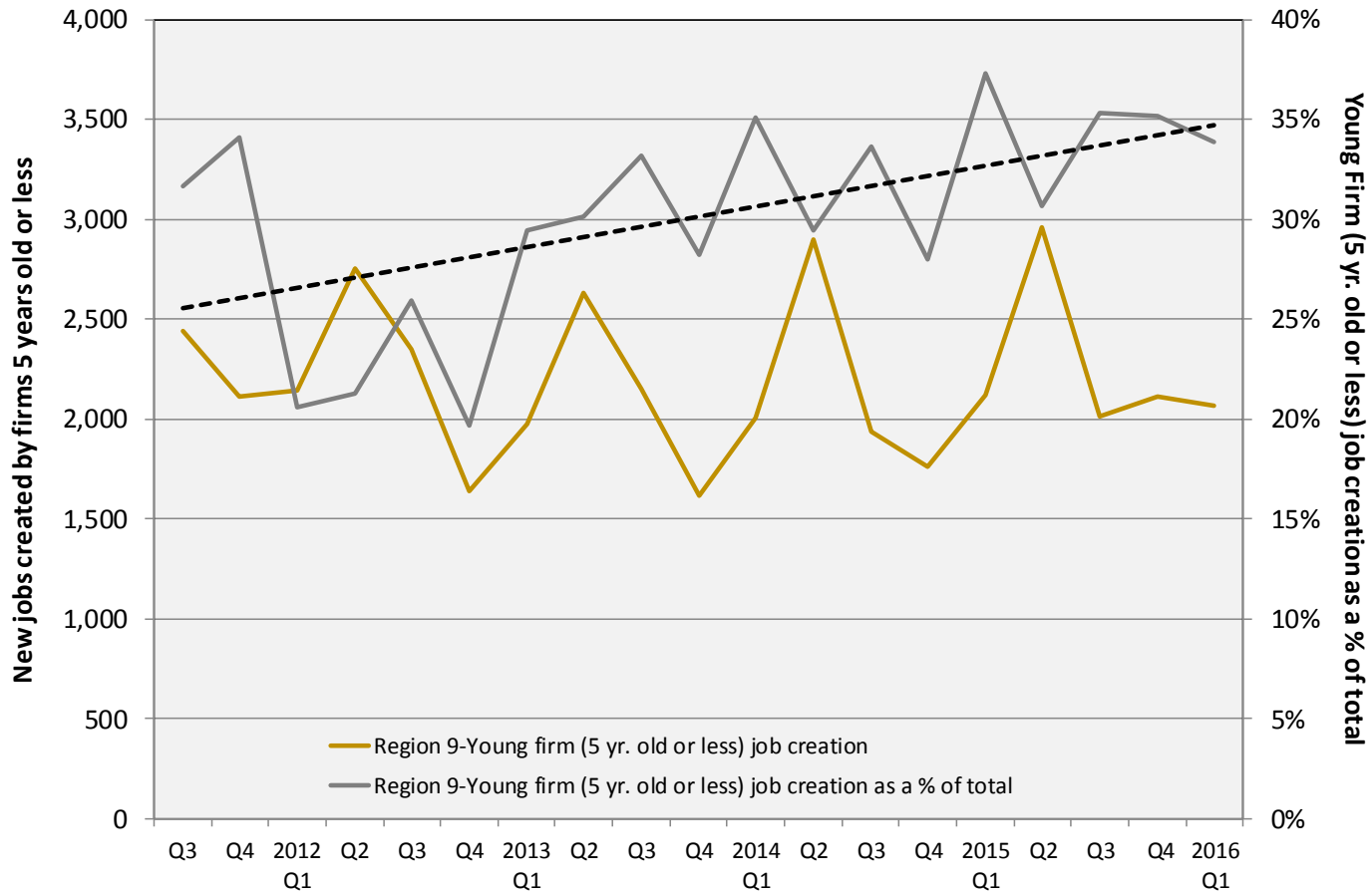
VIRGINIA INITIATIVE FOR
**GROWTH &
OPPORTUNITY**
IN EACH REGION

Firm Growth



VIRGINIA INITIATIVE FOR
**GROWTH &
 OPPORTUNITY**
 IN EACH REGION

Jobs Created by Young Companies (5 years old or less)



Source: US Census Bureau, Longitudinal Employer-Household Dynamics, Quarterly Workforce Indicators



Jobs Created by Young Companies (5 years old or less)

Region 9: Young firm (5 yrs old or less) job creation

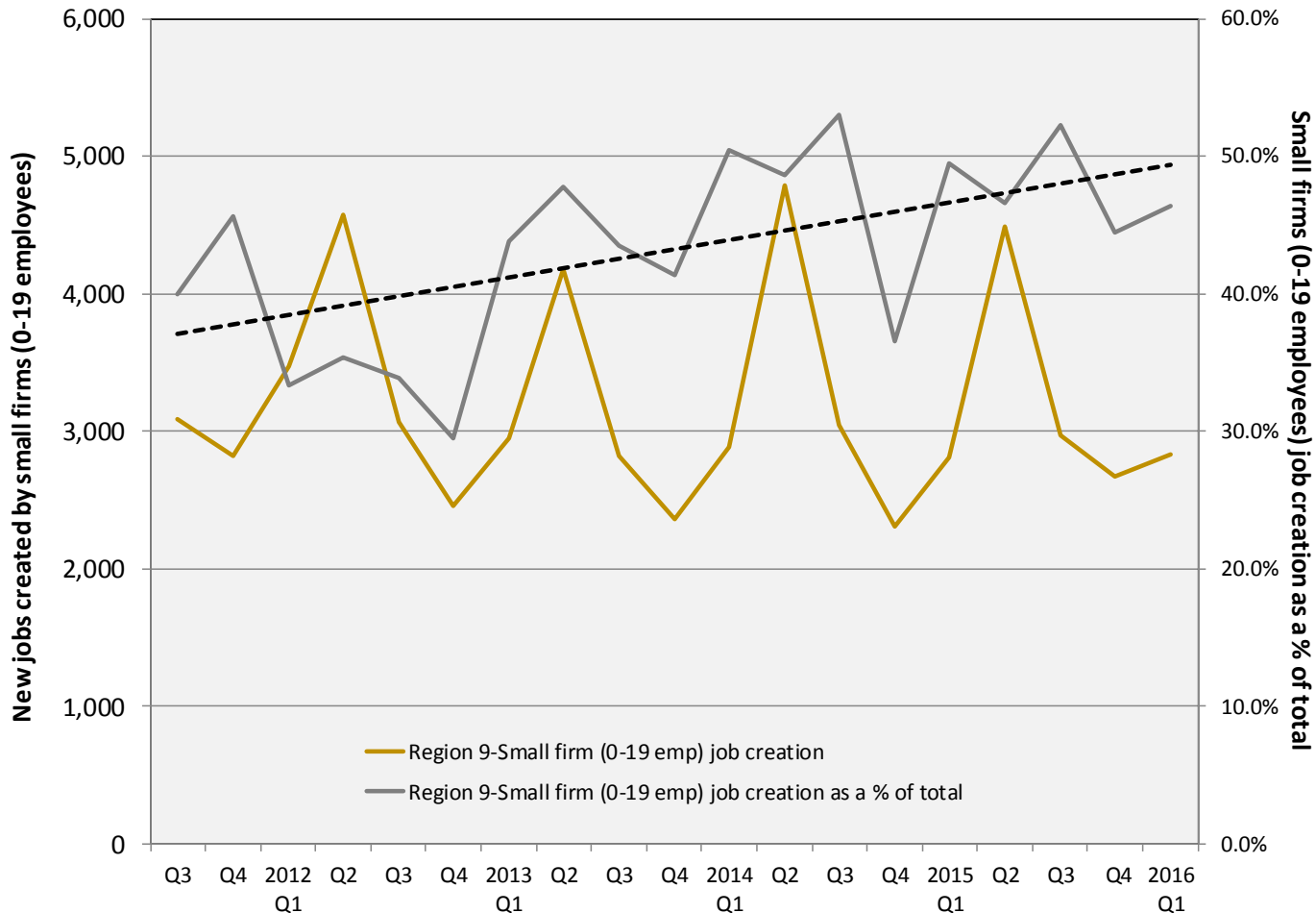
	2012 Average	2015 Average	2012 as a % of Total	2015 as a % of Total
US	1,542,135	1,674,953	25.2%	26.7%
Virginia	42,118	39,288	19.4%	26.2%
Region 9	2,222	2,301	21.8%	34.0%
Albemarle	470	549	12.4%	29.1%
Culpeper	219	204	22.8%	33.9%
Fauquier	364	386	20.8%	35.6%
Fluvanna	67	69	29.7%	35.6%
Greene	49	61	23.5%	39.9%
Louisa	134	140	31.1%	27.5%
Madison	194	72	64.4%	46.5%
Nelson	93	79	32.8%	38.5%
Orange	121	154	21.8%	36.2%
Rappahannock	42	35	47.3%	37.2%
Charlottesville city	471	552	29.3%	38.1%

Source: US Census Bureau, LEHD, QWI



VIRGINIA INITIATIVE FOR
**GROWTH &
 OPPORTUNITY**
 IN EACH REGION

Jobs Created by Small Companies (less than 20 employees)



Source: US Census Bureau, Longitudinal Employer-Household Dynamics, Quarterly Workforce Indicators



Jobs Created by Small Companies

(less than 20 employees)

Region 9: Small firm (0-19 Emp.) job creation

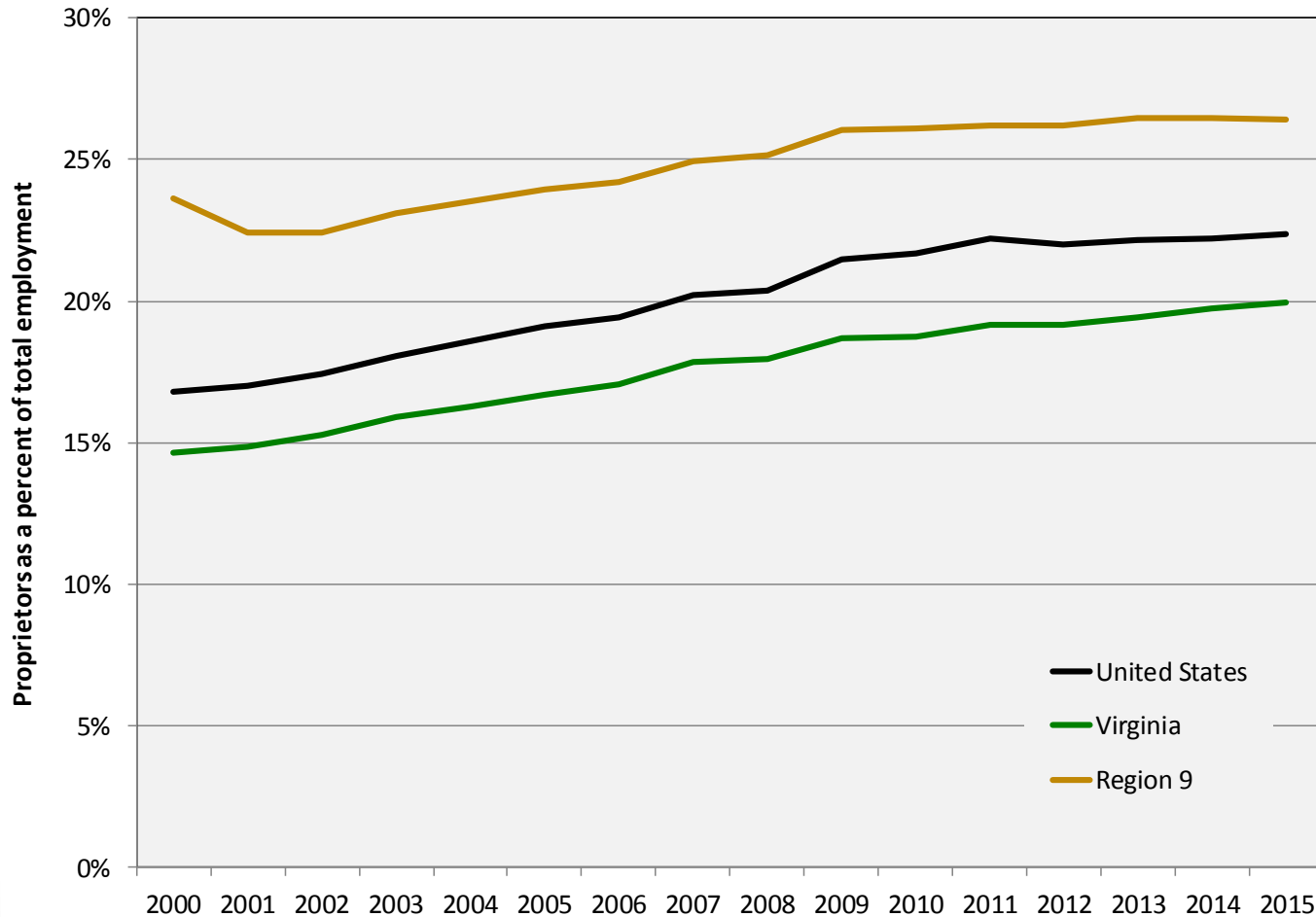
	2012 Average	2015 Average	2012 as a % of Total	2015 as a % of Total
US	2,203,129	2,268,500	36.0%	36.2%
Virginia	58,797	54,683	27.1%	36.4%
Region 9	3,394	3,237	33.3%	47.9%
Albemarle	859	797	22.7%	42.2%
Culpeper	361	273	37.5%	45.4%
Fauquier	647	601	37.0%	55.4%
Fluvanna	106	115	47.2%	58.9%
Greene	78	98	37.9%	63.5%
Louisa	195	211	45.2%	41.4%
Madison	87	64	28.9%	41.5%
Nelson	160	125	56.5%	61.1%
Orange	240	187	43.4%	43.9%
Rappahannock	62	77	70.3%	82.5%
Charlottesville city	599	691	37.2%	47.7%

Source: US Census Bureau, LEHD, QWI



VIRGINIA INITIATIVE FOR
**GROWTH &
OPPORTUNITY**
IN EACH REGION

Sole Proprietorships as a percent of total employment



Source: US Bureau of Economic Analysis



Sole Proprietorships

Proprietors as a percent of total employment: Region 9

	2000 Proprietors	2010 Proprietors	2015 Proprietors	Annual Growth (00-10)	Annual Growth (10-15)	Proprietors as a % of total employment
United States	27,760,800	37,508,700	42,561,400	3.1%	2.1%	22.4%
Virginia	644,573	890,602	1,008,978	3.3%	2.1%	19.9%
Region 9	45,656	57,499	64,067	2.3%	1.8%	26.4%
Albemarle + Charlottesville, VA*	16,531	22,189	25,354	3.0%	2.2%	20.3%
Culpeper	4,241	6,276	6,995	4.0%	1.8%	29.5%
Fauquier	8,249	10,153	11,282	2.1%	1.8%	32.2%
Fluvanna	1,685	2,914	3,098	5.6%	1.0%	38.9%
Greene	1,340	1,974	2,112	3.9%	1.1%	35.1%
Louisa	5,521	3,489	3,951	-4.5%	2.1%	28.0%
Madison	2,569	2,015	2,138	-2.4%	1.0%	38.2%
Nelson	1,554	2,652	2,741	5.5%	0.6%	39.1%
Orange	2,179	4,220	4,538	6.8%	1.2%	31.2%
Rappahannock	1,787	1,617	1,858	-1.0%	2.3%	51.6%

Source: US Bureau of Economic Analysis



VIRGINIA INITIATIVE FOR
**GROWTH &
OPPORTUNITY**
IN EACH REGION

Thank You

Terry L. Clower Ph.D. – tclower@gmu.edu

Mark C. White Ph.D. – mwhite@gmu.edu

Spencer A. Shanholtz – sshanhol@gmu.edu



cra.gmu.edu

[@GMU_CRA](#)