



VIRGINIA INITIATIVE FOR
**GROWTH &
OPPORTUNITY**
IN EACH REGION

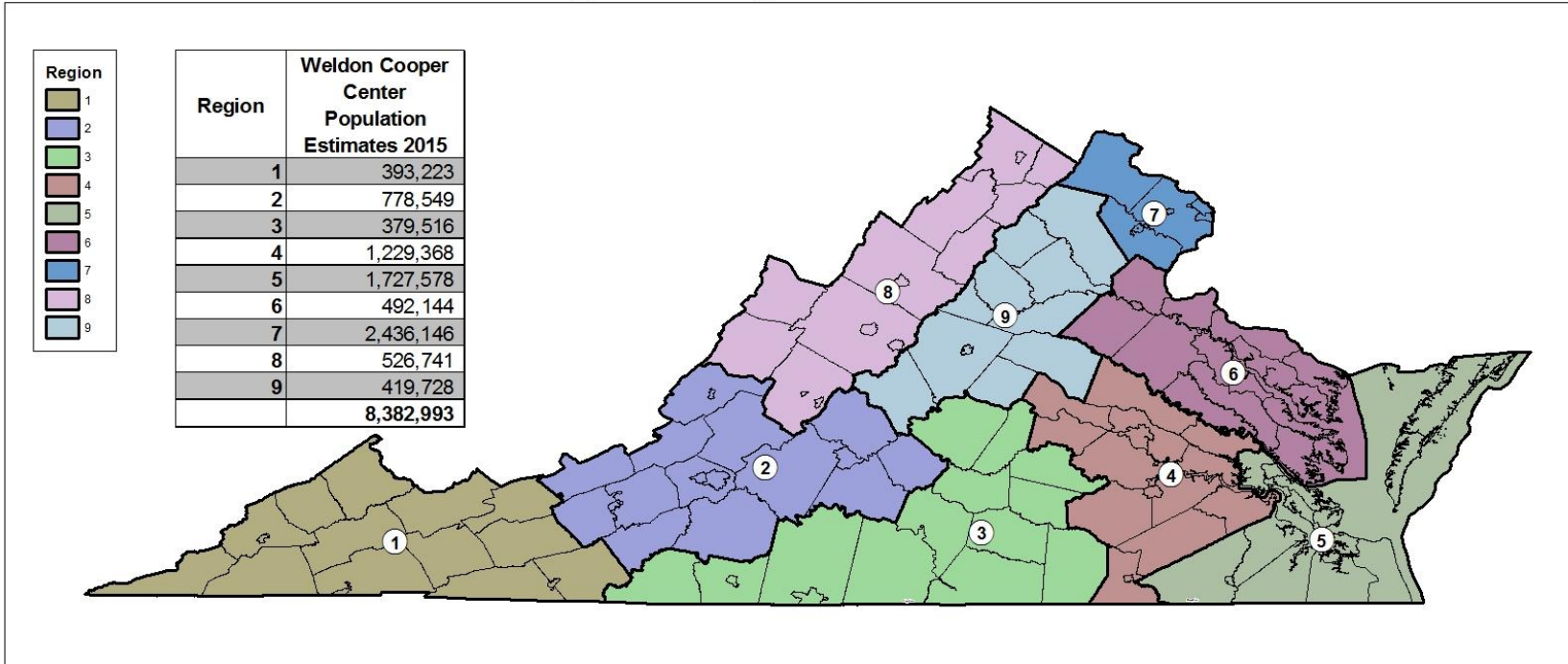
REGIONAL BASELINE MEASURES
COMMONWEALTH OF VIRGINIA





VIRGINIA INITIATIVE FOR
**GROWTH &
OPPORTUNITY**
IN EACH REGION

GO Virginia Regional Boundaries



0 15 30 60 90 120 Miles

Source: US Census, VA PDC



12/5/2016



VIRGINIA INITIATIVE FOR
**GROWTH &
OPPORTUNITY**
IN EACH REGION

Commonwealth of Virginia



VIRGINIA INITIATIVE FOR
**GROWTH &
OPPORTUNITY**
IN EACH REGION

Data Included

- **Population**
 - Population Trends
- **Income and Wealth**
 - Per Capita Income
 - Percent of Population in Poverty
- **Employment**
 - Total Employment
 - Unemployment Rate
- **Industry**
 - Employment Trends by Industry Sector
 - Relative Concentration (Location Quotients) by Sector
 - Wages by Industry Sector



VIRGINIA INITIATIVE FOR
**GROWTH &
OPPORTUNITY**
IN EACH REGION

Data Included

- **Labor Force**
 - Labor Force Participation Rate
 - Commuting inflow/outflow
 - Educational Attainment
- **Firm Growth**
 - Jobs Created by Young Companies (5 years old or less)
 - Jobs Created by Small Companies (less than 20 employees)
 - Sole Proprietorships



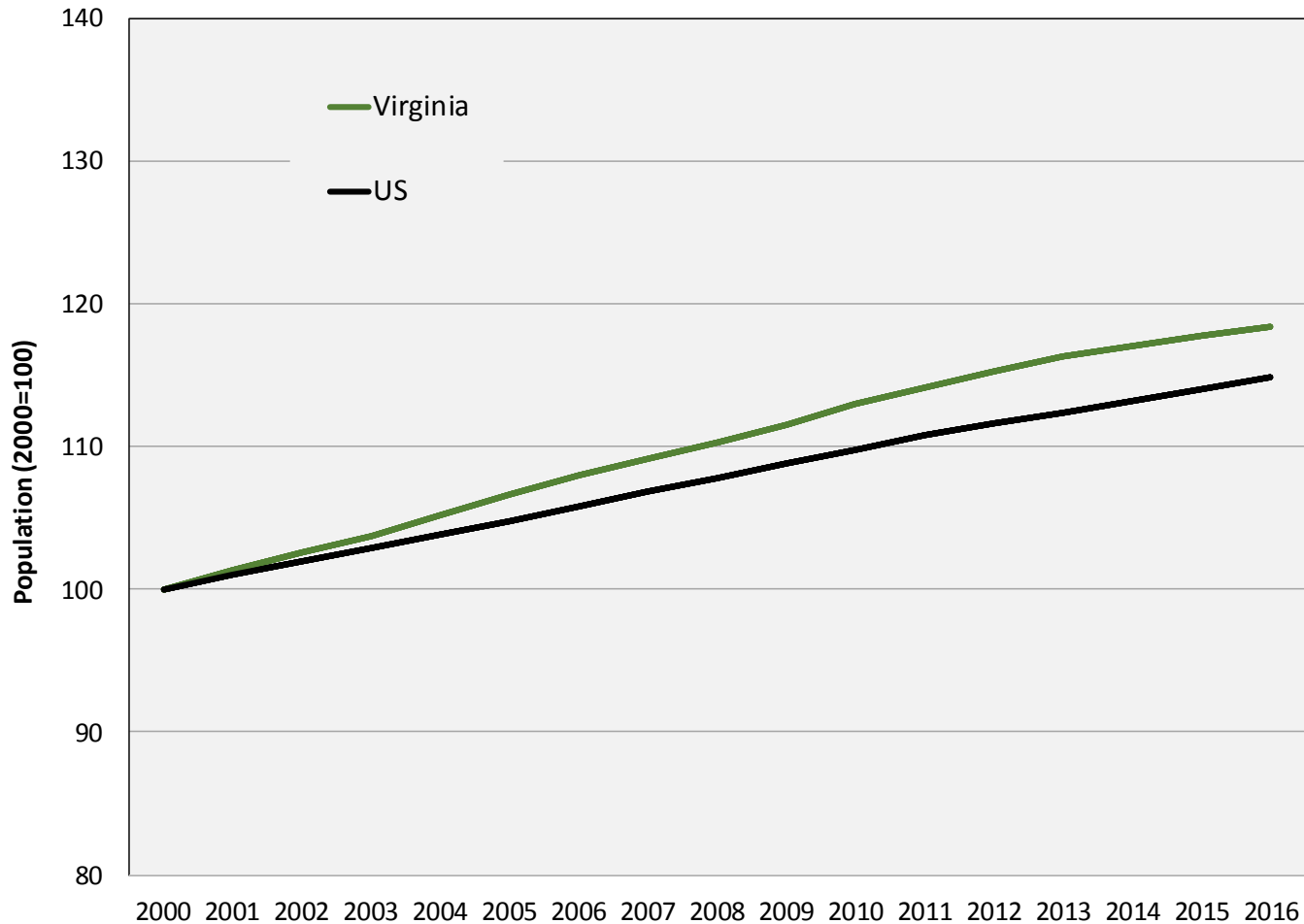
VIRGINIA INITIATIVE FOR
**GROWTH &
OPPORTUNITY**
IN EACH REGION

Population



VIRGINIA INITIATIVE FOR
**GROWTH &
OPPORTUNITY**
IN EACH REGION

Population Trends



Source: US Census Bureau, Population Estimates Programs



Population Trends

Population Trends: Virginia

	2000	2010	2016	Annual Growth (00-10)	Annual Growth (10-16)
United States	281,424,600	308,745,538	323,127,513	0.9%	0.8%
Virginia	7,105,817	8,025,773	8,411,808	1.2%	0.8%
Region 1	398,740	401,712	385,045	0.1%	-0.7%
Region 2	700,085	762,386	777,919	0.9%	0.3%
Region 3	387,778	383,660	371,277	-0.1%	-0.5%
Region 4	1,036,200	1,178,106	1,245,838	1.3%	0.9%
Region 5	1,589,071	1,671,025	1,715,073	0.5%	0.4%
Region 6	376,459	470,955	501,780	2.3%	1.1%
Region 7	1,829,631	2,246,802	2,461,243	2.1%	1.5%
Region 8	445,222	509,185	528,945	1.4%	0.6%
Region 9	336,206	401,942	424,688	1.8%	0.9%

Source: US Census Bureau, Population Estimates Programs



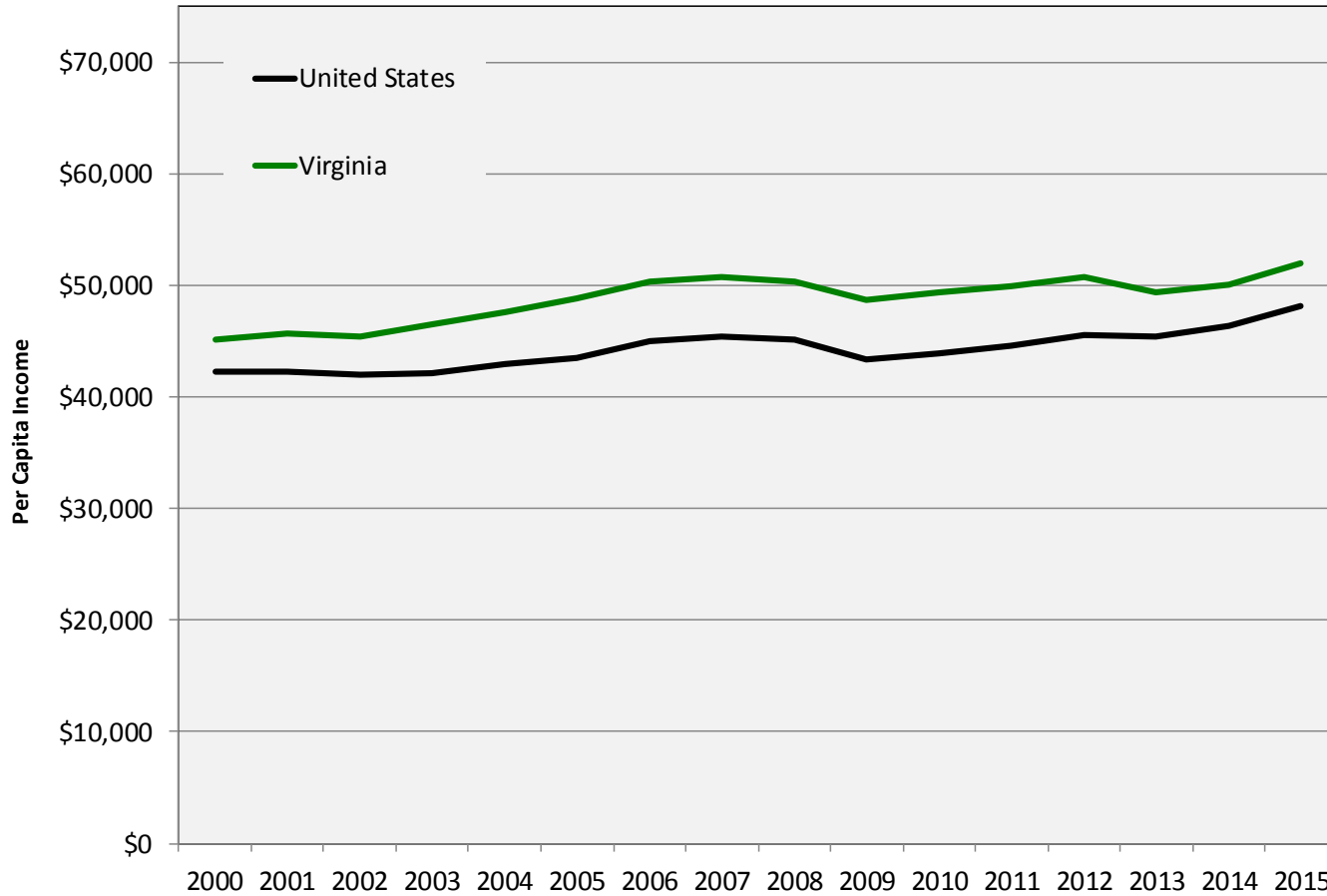
VIRGINIA INITIATIVE FOR
**GROWTH &
OPPORTUNITY**
IN EACH REGION

Income and Wealth



VIRGINIA INITIATIVE FOR
**GROWTH &
OPPORTUNITY**
IN EACH REGION

Per Capita Income



Source: US Bureau of Economic Analysis, PCI adjusted for 2015 dollars



Per Capita Income

Per Capita Income: Virginia

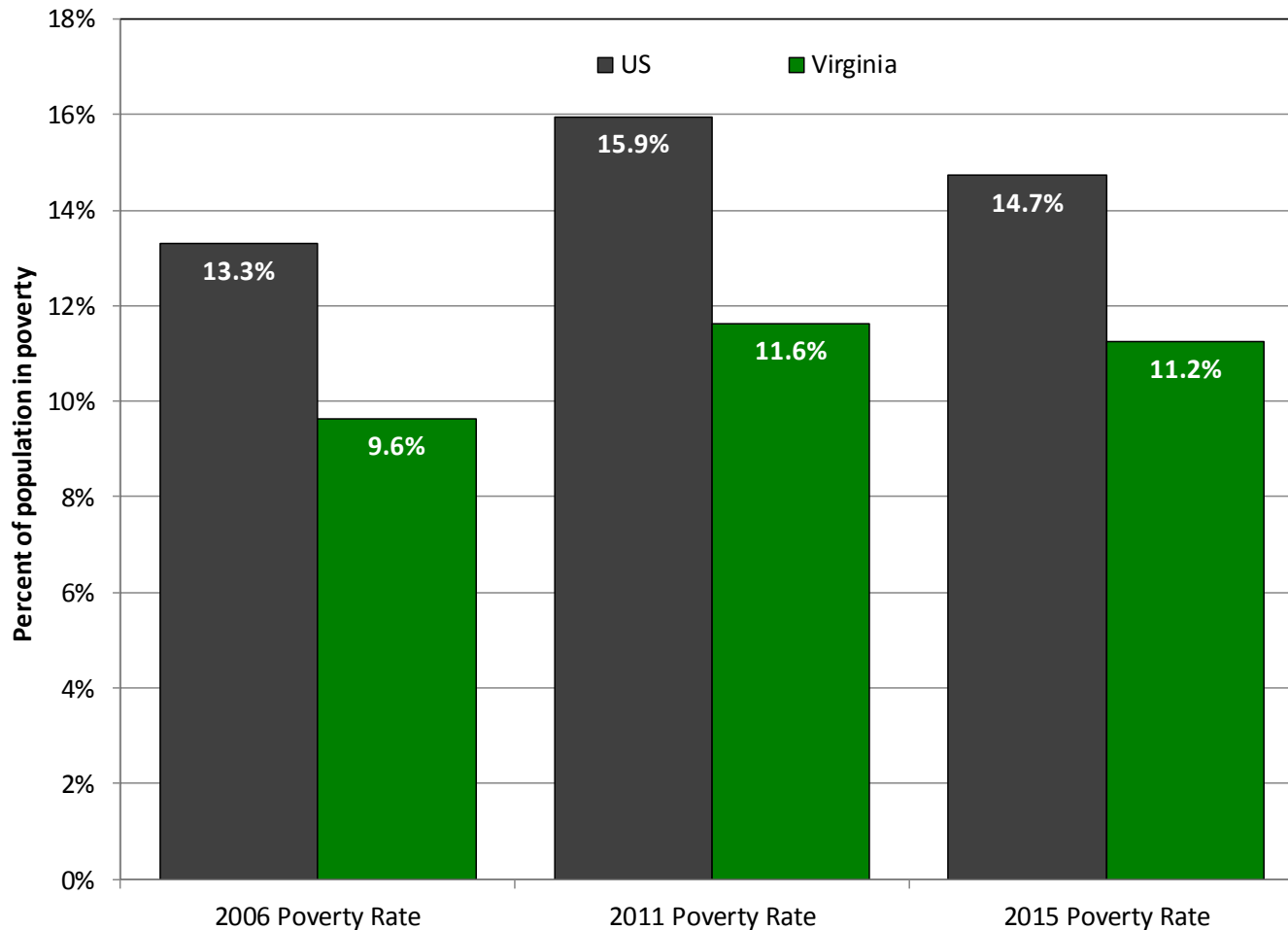
	2000	2010	2015	Annual Growth (00-10)	Annual Growth (10-15)
United States	\$42,231	\$43,902	\$48,112	0.4%	1.5%
Virginia	\$45,144	\$49,421	\$52,052	0.9%	0.9%
Region 1	\$28,453	\$32,637	\$33,475	1.4%	0.4%
Region 2	\$34,930	\$36,863	\$39,012	0.5%	0.9%
Region 3	\$29,000	\$30,990	\$33,480	0.7%	1.3%
Region 4	\$44,363	\$46,492	\$50,623	0.5%	1.4%
Region 5	\$38,351	\$44,036	\$46,192	1.4%	0.8%
Region 6	\$38,639	\$44,997	\$46,109	1.5%	0.4%
Region 7	\$66,533	\$69,164	\$70,571	0.4%	0.3%
Region 8	\$34,680	\$37,757	\$40,199	0.9%	1.0%
Region 9	\$44,284	\$48,173	\$52,038	0.8%	1.3%

Source: US Bureau of Economic Analysis, PCI adjusted for 2015 dollars



VIRGINIA INITIATIVE FOR
**GROWTH &
OPPORTUNITY**
IN EACH REGION

Percent of Population in Poverty



Source: US Census Bureau, Small Area Income and Poverty Estimates



Percent of Population in Poverty

Poverty Trends: Virginia

	2006 Poverty Rate	2011 Poverty Rate	2015 Poverty Rate
United States	13.3%	15.9%	14.7%
Virginia	9.6%	11.6%	11.2%
Region 1	17.2%	19.7%	19.6%
Region 2	12.7%	15.2%	15.1%
Region 3	16.6%	20.2%	19.6%
Region 4	9.8%	12.7%	12.0%
Region 5	10.5%	12.7%	12.9%
Region 6	7.7%	9.5%	8.9%
Region 7	5.2%	6.6%	6.2%
Region 8	11.0%	13.2%	13.2%
Region 9	9.3%	11.1%	10.6%

Source: US Census Bureau, Small Area Income and Poverty Estimates



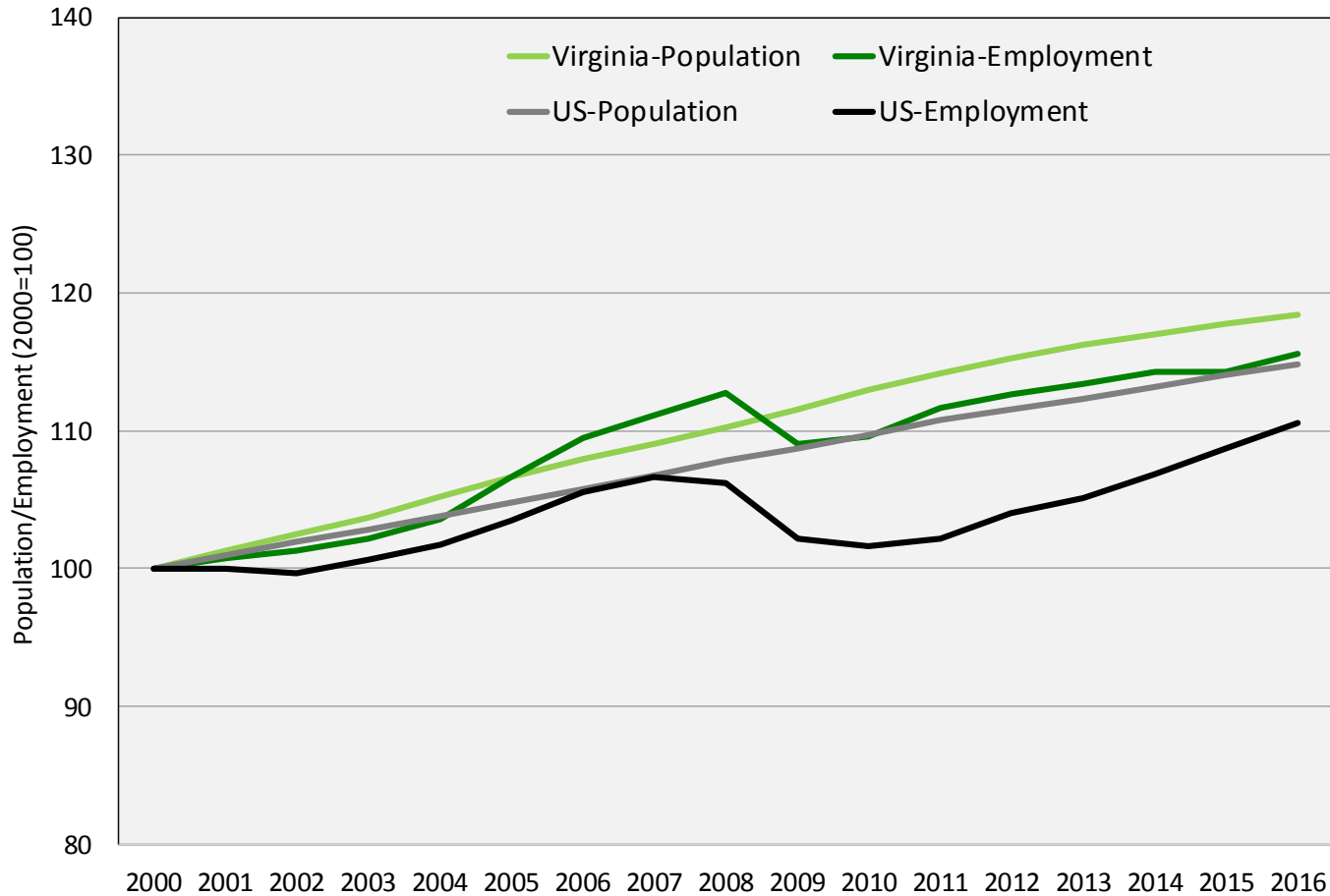
VIRGINIA INITIATIVE FOR
**GROWTH &
OPPORTUNITY**
IN EACH REGION

Employment



VIRGINIA INITIATIVE FOR
**GROWTH &
OPPORTUNITY**
IN EACH REGION

Total Employment



Source: US Census Bureau Population Estimates, US Bureau of Labor Statistics Local Area Unemployment Statistics (2016 preliminary)



Total Employment

Employment Trends: Virginia

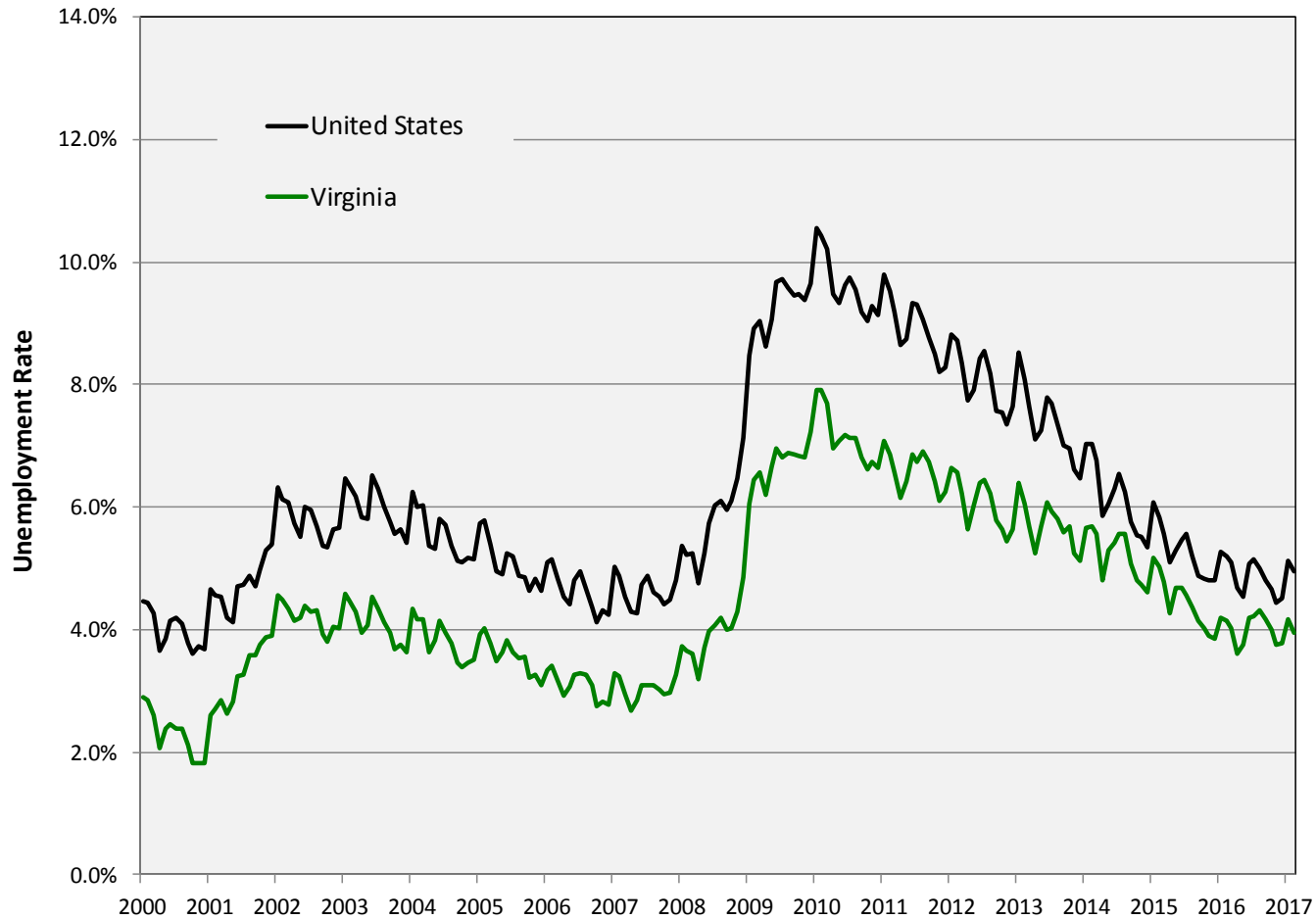
	2000	2010	2016	Annual Growth (00-10)	Annual Growth (10-16)
United States	136,891,000	139,064,000	151,436,000	0.2%	1.4%
Virginia	3,522,865	3,860,386	4,070,260	0.9%	0.9%
Region 1	165,380	157,649	149,694	-0.5%	-0.9%
Region 2	345,475	354,578	362,604	0.3%	0.4%
Region 3	170,177	152,273	153,265	-1.1%	0.1%
Region 4	522,673	561,551	622,715	0.7%	1.7%
Region 5	707,954	765,498	786,346	0.8%	0.4%
Region 6	185,676	220,127	231,258	1.7%	0.8%
Region 7	1,031,194	1,214,760	1,301,155	1.7%	1.2%
Region 8	226,064	239,612	248,553	0.6%	0.6%
Region 9	168,280	194,342	208,404	1.5%	1.2%

Source: US BLS Local Area Unemployment Statistics (2016 preliminary)



VIRGINIA INITIATIVE FOR
**GROWTH &
OPPORTUNITY**
IN EACH REGION

Unemployment Rate



Source: US Bureau of Labor Statistics, Local Area Unemployment Statistics



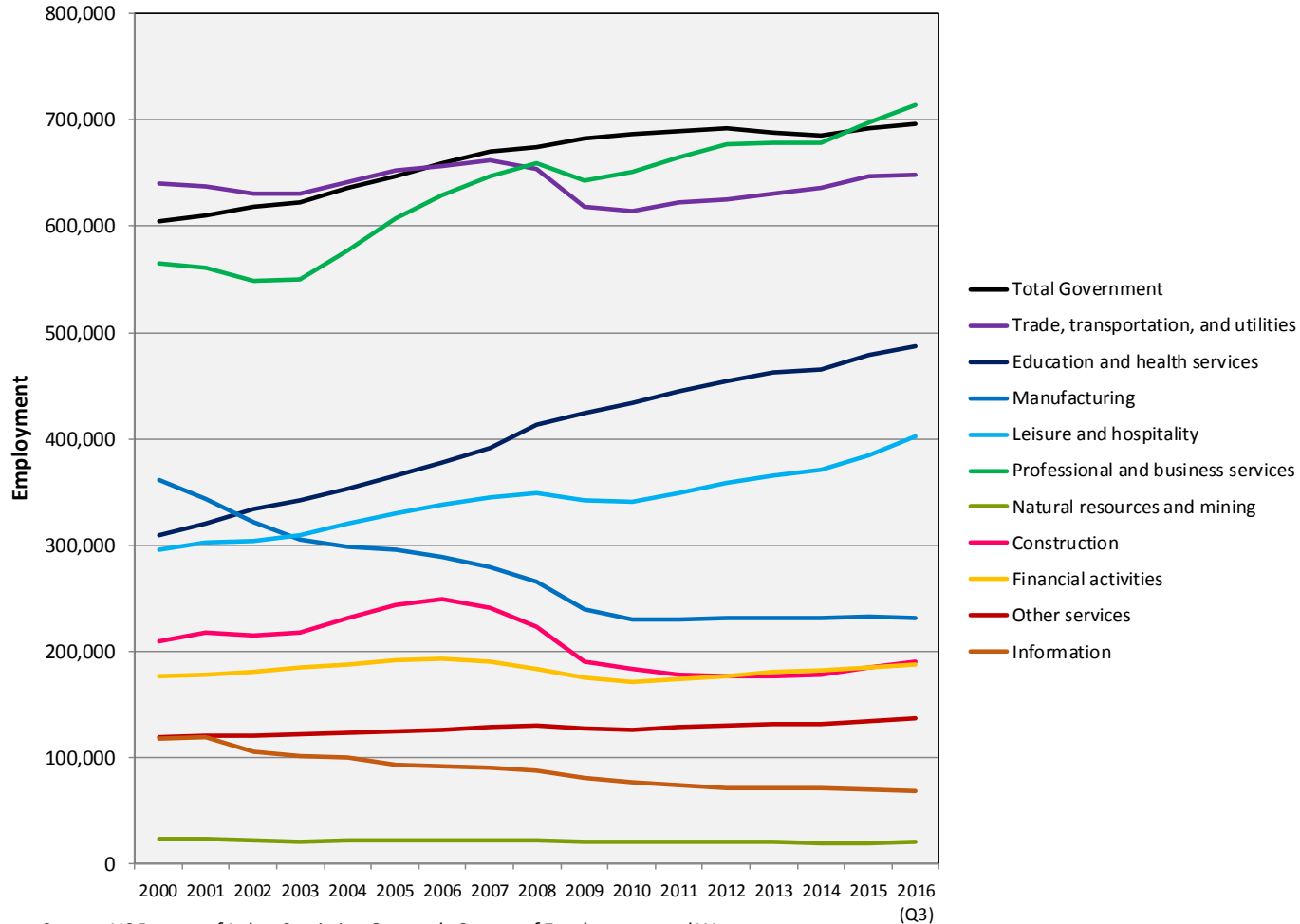
VIRGINIA INITIATIVE FOR
**GROWTH &
OPPORTUNITY**
IN EACH REGION

Industry



VIRGINIA INITIATIVE FOR
**GROWTH &
OPPORTUNITY**
IN EACH REGION

Employment Trends by Industry Sector



Source: US Bureau of Labor Statistics, Quarterly Census of Employment and Wages



Employment Trends by Industry Sector

Commonwealth of Virginia: Industry Sectors, 2015*

Sector	Employment#	LQ	Virginia Avg Wage	US Avg Wage
Professional and business services	697,794	1.33	\$81,959	\$69,270
Trade, transportation, and utilities	647,248	0.91	\$40,584	\$44,321
Education and health services	478,617	0.85	\$46,630	\$47,383
Leisure and hospitality	384,750	0.95	\$19,148	\$21,807
Local government	369,883	1.00	\$43,400	\$47,573
Manufacturing	232,652	0.71	\$57,778	\$64,305
Financial activities	184,987	0.88	\$77,424	\$87,915
Construction	184,358	1.07	\$51,560	\$57,009
Federal government	176,757	2.39	\$89,056	\$77,900
State government	145,291	1.19	\$48,705	\$55,878
Other services	134,593	1.17	\$41,114	\$35,116
Information	69,505	0.94	\$95,307	\$95,098
Natural resources and mining	19,684	0.37	\$44,329	\$58,461

Source: US Bureau of Labor Statistics, Quarterly Census of Employment and Wages

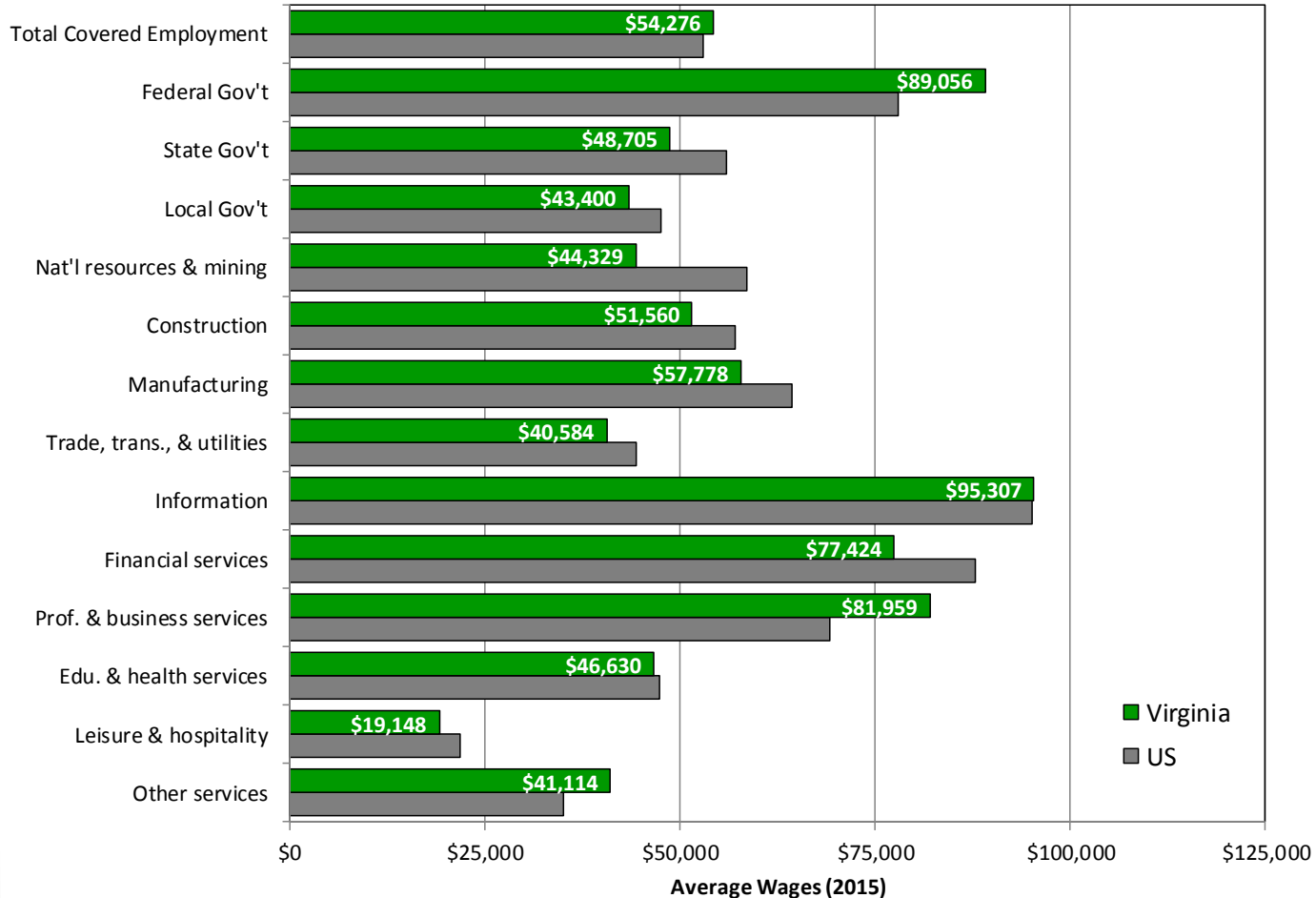
*2015 is the most recently available complete year

#Does not include suppressed employment



VIRGINIA INITIATIVE FOR
**GROWTH &
OPPORTUNITY**
IN EACH REGION

Industry Wages by Sector



Source: US Bureau of Labor Statistics, Quarterly Census of Employment and Wages



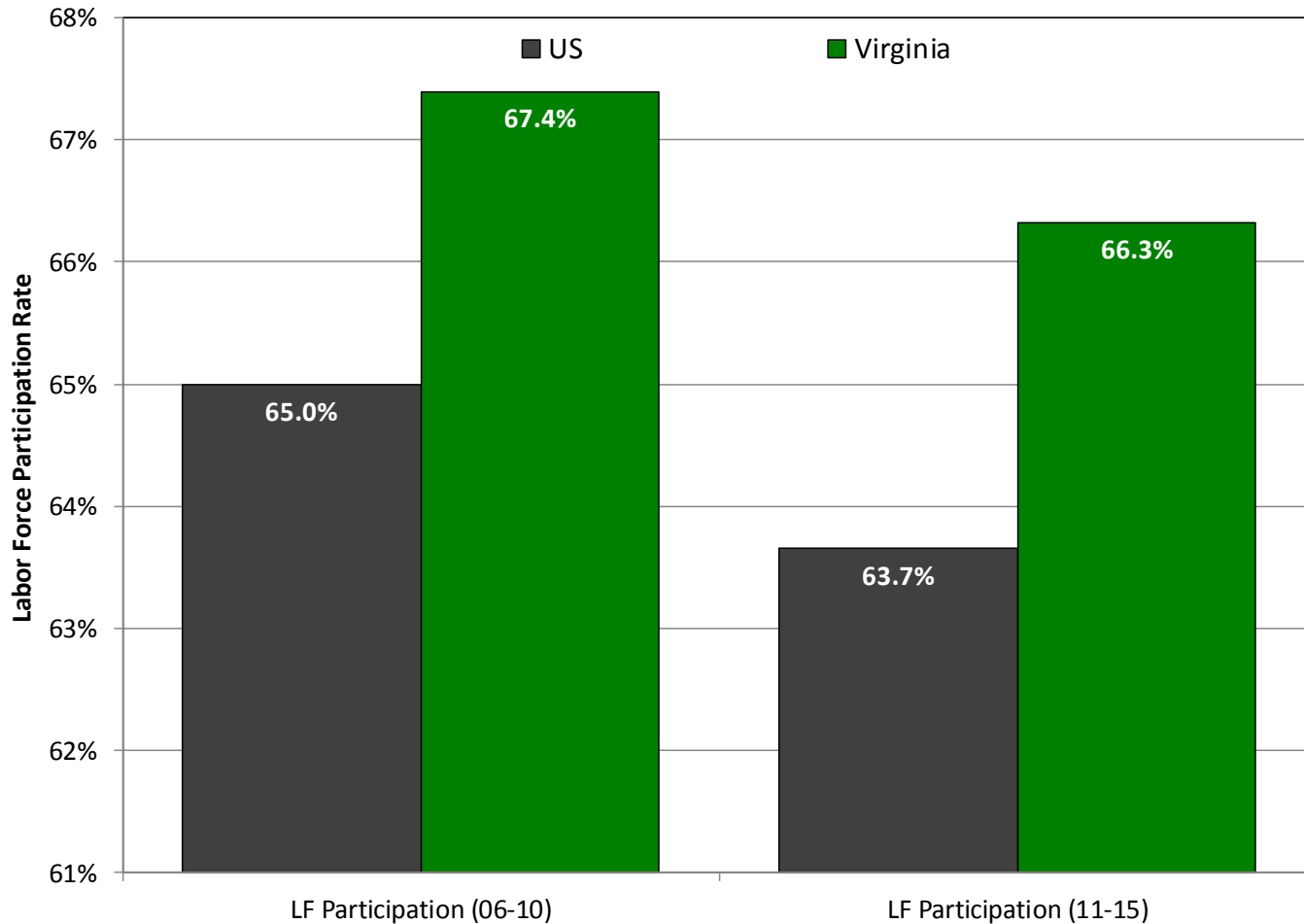
VIRGINIA INITIATIVE FOR
**GROWTH &
OPPORTUNITY**
IN EACH REGION

Labor Force



VIRGINIA INITIATIVE FOR
**GROWTH &
OPPORTUNITY**
IN EACH REGION

Labor Force Participation Rate



Source: US Census Bureau, 2006-2010 and 2011-2015 American Community Surveys



VIRGINIA INITIATIVE FOR
**GROWTH &
OPPORTUNITY**
IN EACH REGION

Labor Force Participation Rate

Labor Force Participation Rate: Virginia

	LF Participation (06-10)	LF Participation (11-15)
United States	65.0%	63.7%
Virginia	67.4%	66.3%
Region 1	52.5%	51.4%
Region 2	62.0%	60.0%
Region 3	54.8%	54.0%
Region 4	66.9%	66.2%
Region 5	68.8%	67.1%
Region 6	66.6%	65.4%
Region 7	75.6%	74.6%
Region 8	62.7%	61.6%
Region 9	64.8%	62.6%

Source: US Census Bureau, 2006-2010 and 2011-2015 American Community Surveys

Commuting Inflow/Outflow

Inflow/Outflow Job Counts in 2014



■	286,033 - Employed in Selection Area, Live Outside
■	349,760 - Live in Selection Area, Employed Outside
■	3,027,906 - Employed and Live in Selection Area

Inflow/Outflow Job Counts (Primary Jobs): Virginia

	2014	
	Count	Share
Employed in the Selection Area	3,313,939	100.00%
Employed in the Selection Area but Living Outside	286,033	8.60%
Employed and Living in the Selection Area	3,027,906	91.40%
Living in the Selection Area	3,377,666	100.00%
Living in the Selection Area but Employed Outside	349,760	10.40%
Living and Employed in the Selection Area	3,027,906	89.60%

Source: US Census Bureau, Longitudinal Employer-Household Dynamics OnTheMap, 2014



Commuting Inflow/Outflow

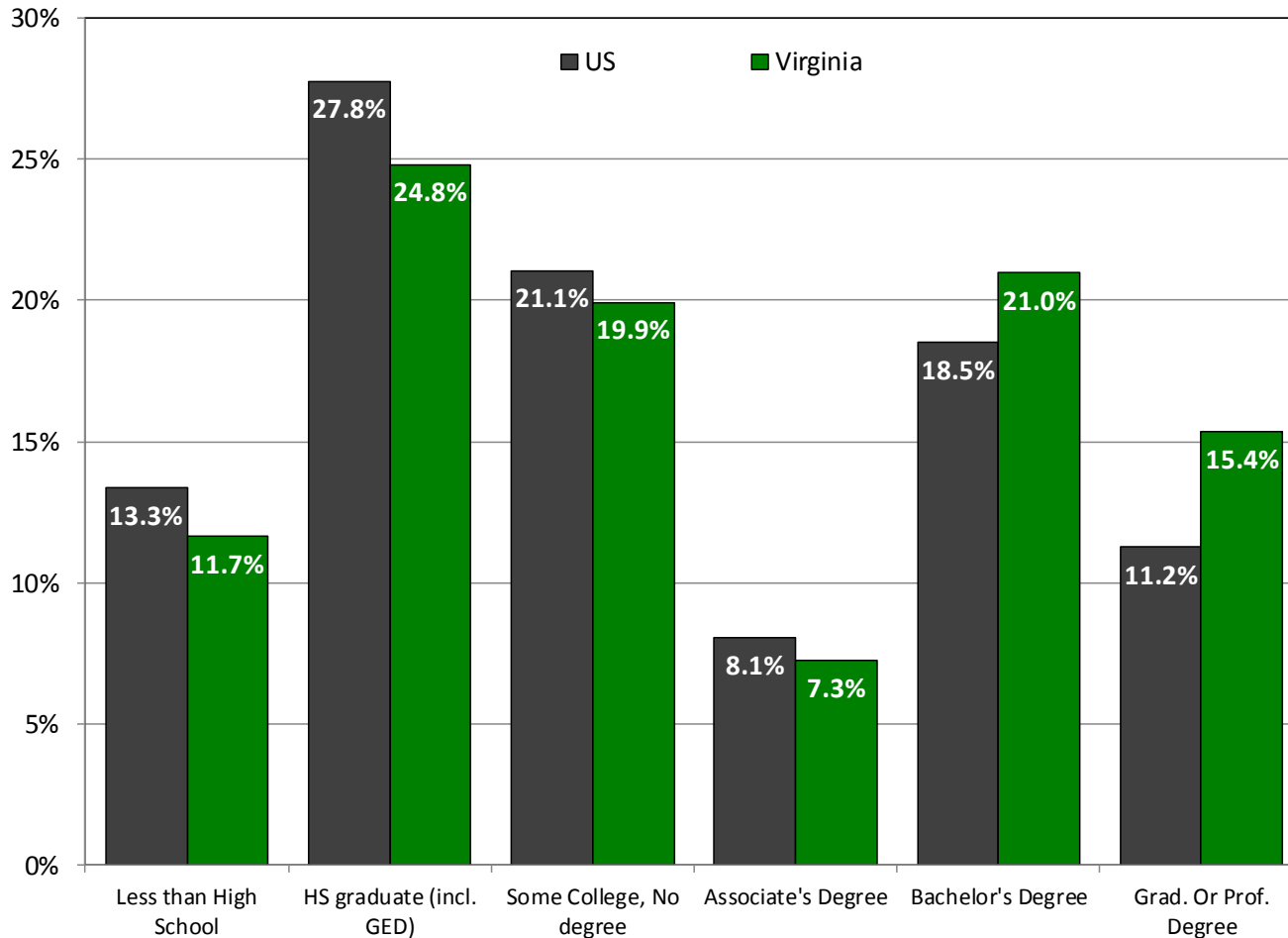
Commuting Patterns: Virginia

	Employed in Selection Area	Employed in the Selection Area but Living Outside		Employed and Living in the Selection Area		Living in the Selection Area	Living in the Selection Area but Employed Outside		Living and Employed in the Selection Area	
Virginia	3,313,939	286,033	8.6%	3,027,906	91.4%	3,377,666	349,760	10.4%	3,027,906	89.6%
Region 1	128,875	29,413	22.8%	99,462	77.2%	140,838	41,376	29.4%	99,462	70.6%
Region 2	311,508	69,447	22.3%	242,061	77.7%	294,469	52,408	17.8%	242,061	82.2%
Region 3	113,589	31,503	27.7%	82,086	72.3%	141,323	59,237	41.9%	82,086	58.1%
Region 4	565,882	137,498	24.3%	428,384	75.7%	522,362	93,978	18.0%	428,384	82.0%
Region 5	653,123	105,649	16.2%	547,474	83.8%	643,432	95,958	14.9%	547,474	85.1%
Region 6	125,762	43,595	34.7%	82,167	65.3%	194,386	112,219	57.7%	82,167	42.3%
Region 7	1,076,430	336,285	31.2%	740,145	68.8%	1,051,534	311,389	29.6%	740,145	70.4%
Region 8	195,360	50,393	25.8%	144,967	74.2%	223,526	78,559	35.1%	144,967	64.9%
Region 9	143,410	48,910	34.1%	94,500	65.9%	165,796	71,296	43.0%	94,500	57.0%

Source: US Census Bureau, Longitudinal Employer-Household Dynamics OnTheMap, 2014



Educational Attainment



Source: US Census Bureau, 2011-2015 American Community Survey



Educational Attainment

Educational Attainment: Virginia

	2006-2010						2011-2015					
	Less than High School	HS graduate (incl. GED)	Some College, No degree	Associate's Degree	Bachelor's Degree	Grad. Or Prof. Degree	Less than High School	HS graduate (incl. GED)	Some College, No degree	Associate's Degree	Bachelor's Degree	Grad. Or Prof. Degree
United States	14.9%	29.0%	20.6%	7.5%	17.6%	10.3%	13.3%	27.8%	21.1%	8.1%	18.5%	11.2%
Virginia	13.9%	26.0%	19.6%	6.7%	19.9%	13.9%	11.7%	24.8%	19.9%	7.3%	21.0%	15.4%
Region 1	26.1%	34.1%	18.7%	7.7%	9.2%	4.4%	21.5%	35.1%	20.2%	8.2%	9.7%	5.3%
Region 2	16.1%	31.7%	20.7%	7.6%	14.9%	8.9%	12.8%	30.5%	21.2%	8.5%	16.6%	10.3%
Region 3	26.3%	35.0%	18.4%	7.2%	8.6%	4.7%	21.2%	34.5%	21.3%	8.3%	9.4%	5.3%
Region 4	14.5%	27.1%	20.8%	6.0%	20.3%	11.3%	12.0%	26.1%	21.0%	6.9%	21.3%	12.8%
Region 5	11.6%	27.6%	24.8%	8.5%	17.3%	10.3%	10.1%	25.8%	25.5%	9.1%	18.4%	11.1%
Region 6	13.1%	31.3%	21.5%	7.1%	17.0%	10.0%	10.5%	30.8%	22.5%	7.5%	17.5%	11.2%
Region 7	8.7%	15.1%	15.5%	5.4%	30.0%	25.3%	8.3%	14.3%	14.9%	5.6%	30.1%	26.7%
Region 8	19.1%	35.9%	17.2%	5.5%	14.0%	8.3%	15.4%	35.0%	18.3%	6.6%	15.2%	9.5%
Region 9	14.4%	28.2%	18.7%	5.9%	18.5%	14.3%	11.8%	27.9%	18.5%	6.4%	19.5%	15.8%

Source: US Census Bureau, 2006-2010 and 2011-2015 American Community Survey



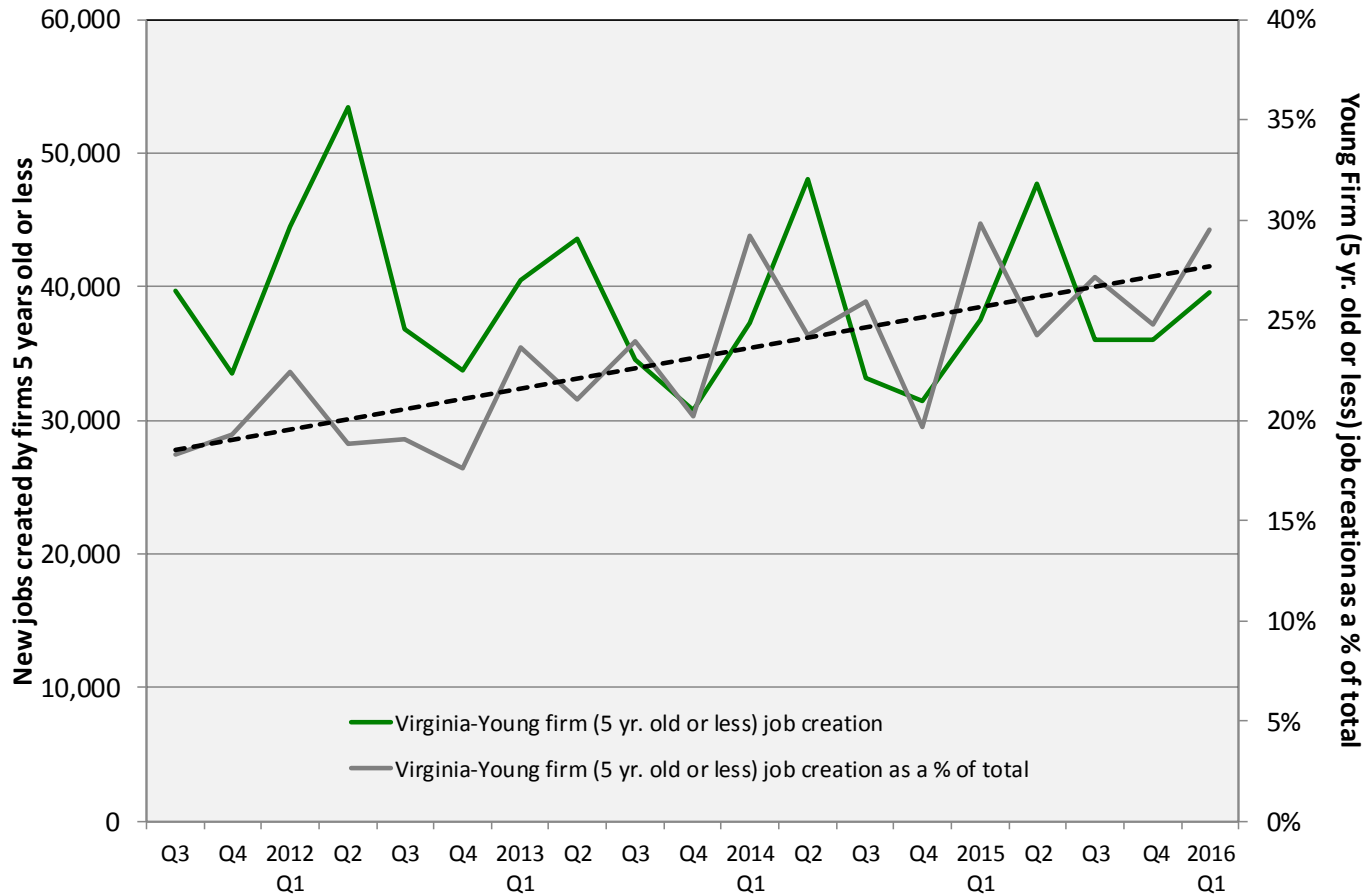
VIRGINIA INITIATIVE FOR
**GROWTH &
OPPORTUNITY**
IN EACH REGION

Firm Growth



VIRGINIA INITIATIVE FOR
**GROWTH &
 OPPORTUNITY**
 IN EACH REGION

Jobs Created by Young Companies (5 years old or less)



Source: US Census Bureau, Longitudinal Employer-Household Dynamics, Quarterly Workforce Indicators



VIRGINIA INITIATIVE FOR
**GROWTH &
 OPPORTUNITY**
 IN EACH REGION

Jobs Created by Young Companies (5 years old or less)

Virginia: Young firm (5 yrs old or less) job creation

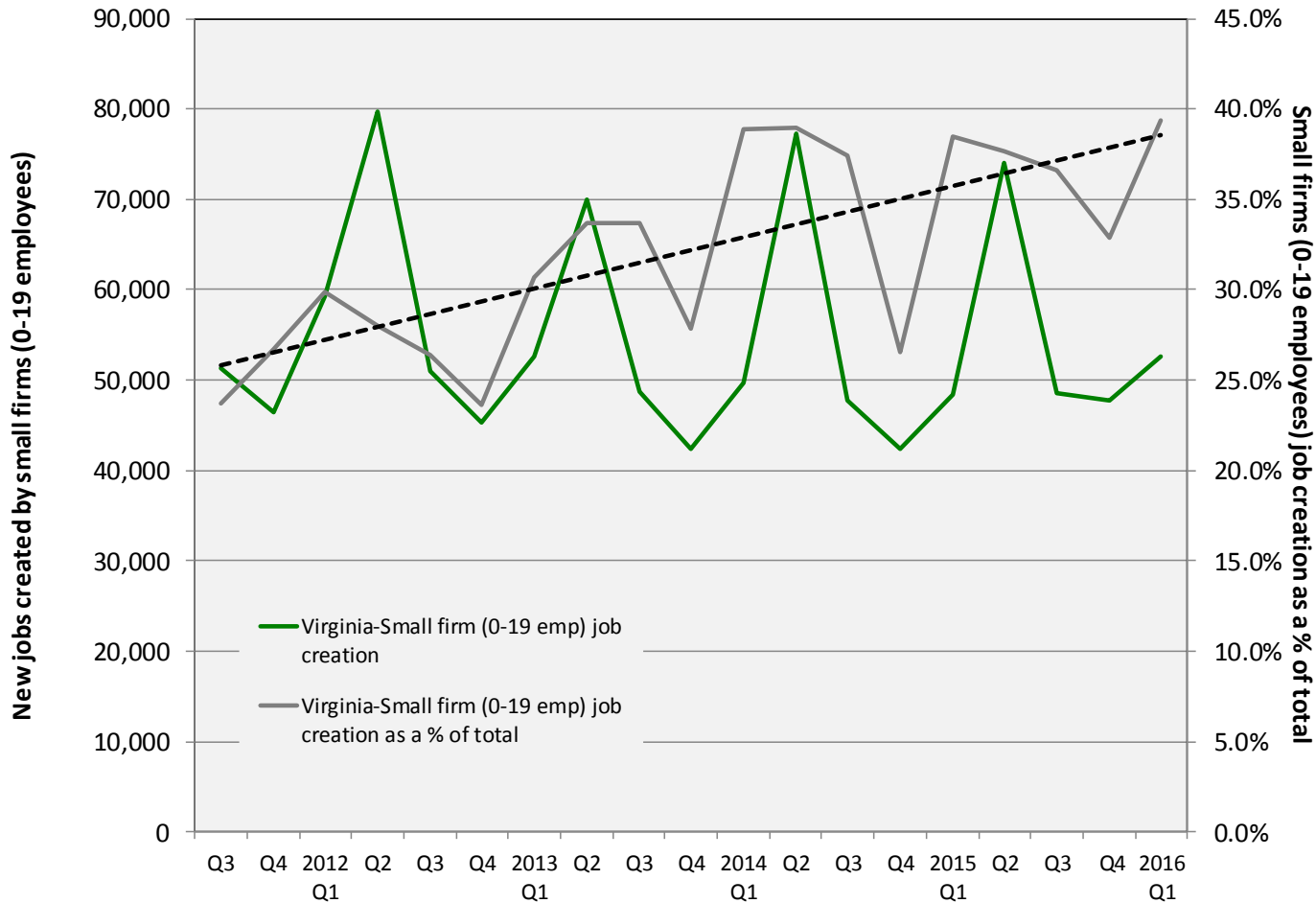
	2012 Average	2015 Average	2012 as a % of Total	2015 as a % of Total
US	1,542,135	1,674,953	25.2%	26.7%
Virginia	42,118	39,288	19.4%	26.2%
Region 1	1,478	1,161	21.4%	23.3%
Region 2	3,193	2,961	14.3%	24.2%
Region 3	1,440	1,348	20.2%	26.3%
Region 4	6,750	6,358	18.4%	24.0%
Region 5	8,005	7,732	18.4%	26.2%
Region 6	1,959	1,824	21.8%	28.9%
Region 7	14,851	13,512	21.2%	26.8%
Region 8	2,232	2,096	20.3%	25.1%
Region 9	2,222	2,301	21.8%	34.0%

Source: US Census Bureau, LEHD, QWI



VIRGINIA INITIATIVE FOR
**GROWTH &
 OPPORTUNITY**
 IN EACH REGION

Jobs Created by Small Companies (less than 20 employees)



Source: US Census Bureau, Longitudinal Employer-Household Dynamics, Quarterly Workforce Indicators



VIRGINIA INITIATIVE FOR
**GROWTH &
 OPPORTUNITY**
 IN EACH REGION

Jobs Created by Small Companies

(less than 20 employees)

Virginia: Small firm (0-19 Emp.) job creation

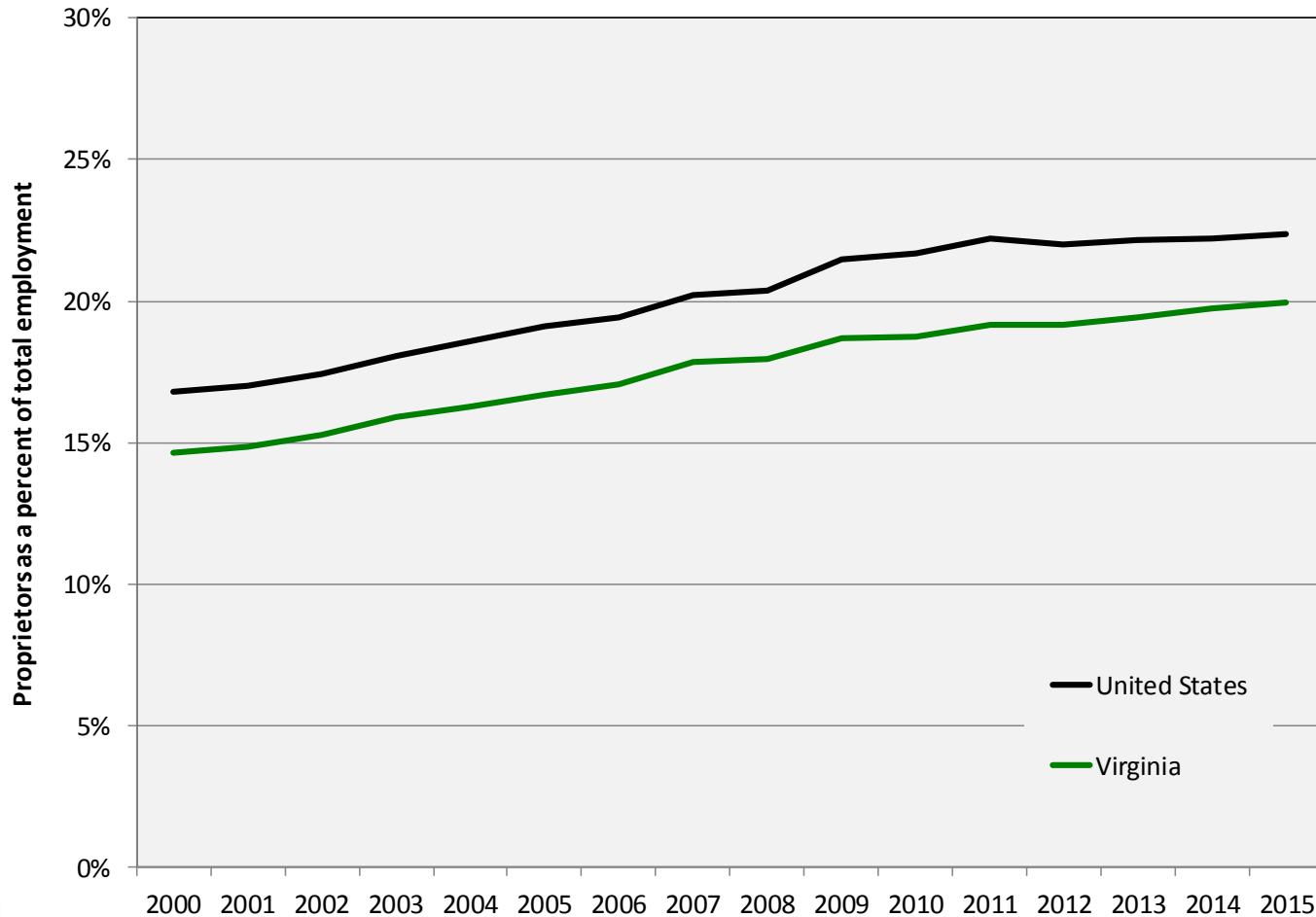
	2012 Average	2015 Average	2012 as a % of Total	2015 as a % of Total
US	2,203,129	2,268,500	36.0%	36.2%
Virginia	58,797	54,683	27.1%	36.4%
Region 1	2,342	1,963	33.9%	39.4%
Region 2	5,237	4,792	23.4%	39.2%
Region 3	2,509	2,186	35.2%	42.6%
Region 4	8,907	8,177	24.3%	30.9%
Region 5	11,371	10,591	26.1%	35.9%
Region 6	3,201	3,116	35.7%	49.4%
Region 7	18,107	17,138	25.8%	34.0%
Region 8	3,731	3,485	34.0%	41.7%
Region 9	3,394	3,237	33.3%	47.9%

Source: US Census Bureau, LEHD, QWI



VIRGINIA INITIATIVE FOR
**GROWTH &
OPPORTUNITY**
IN EACH REGION

Sole Proprietorships as a percent of total employment



Source: US Bureau of Economic Analysis



Sole Proprietorships

Proprietors as a percent of total employment: Virginia

	2000 Proprietors	2010 Proprietors	2015 Proprietors	Annual Growth (00-10)	Annual Growth (10-15)	Proprietors as a % of total employment
United States	27,760,800	37,508,700	42,561,400	3.1%	2.1%	22.4%
Virginia	644,573	890,602	1,008,978	3.3%	2.1%	19.9%
Region 1	38,467	36,962	38,356	-0.4%	0.6%	21.7%
Region 2	63,032	76,840	82,204	2.0%	1.1%	18.8%
Region 3	33,805	34,286	36,873	0.1%	1.2%	21.7%
Region 4	83,605	128,123	147,080	4.4%	2.3%	18.0%
Region 5	107,222	150,455	169,820	3.4%	2.0%	16.4%
Region 6	34,706	47,498	53,847	3.2%	2.1%	24.7%
Region 7	191,824	297,319	350,228	4.5%	2.8%	21.0%
Region 8	46,256	61,620	66,503	2.9%	1.3%	22.5%
Region 9	45,656	57,499	64,067	2.3%	1.8%	26.4%

Source: US Bureau of Economic Analysis



VIRGINIA INITIATIVE FOR
**GROWTH &
OPPORTUNITY**
IN EACH REGION

Thank You

Terry L. Clower Ph.D. – tclower@gmu.edu
Mark C. White Ph.D. – mwhite@gmu.edu
Spencer A. Shanholtz – sshanhol@gmu.edu



cra.gmu.edu
[@GMU_CRA](#)