

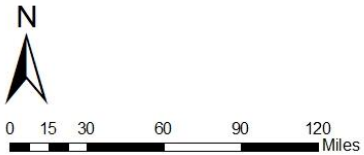
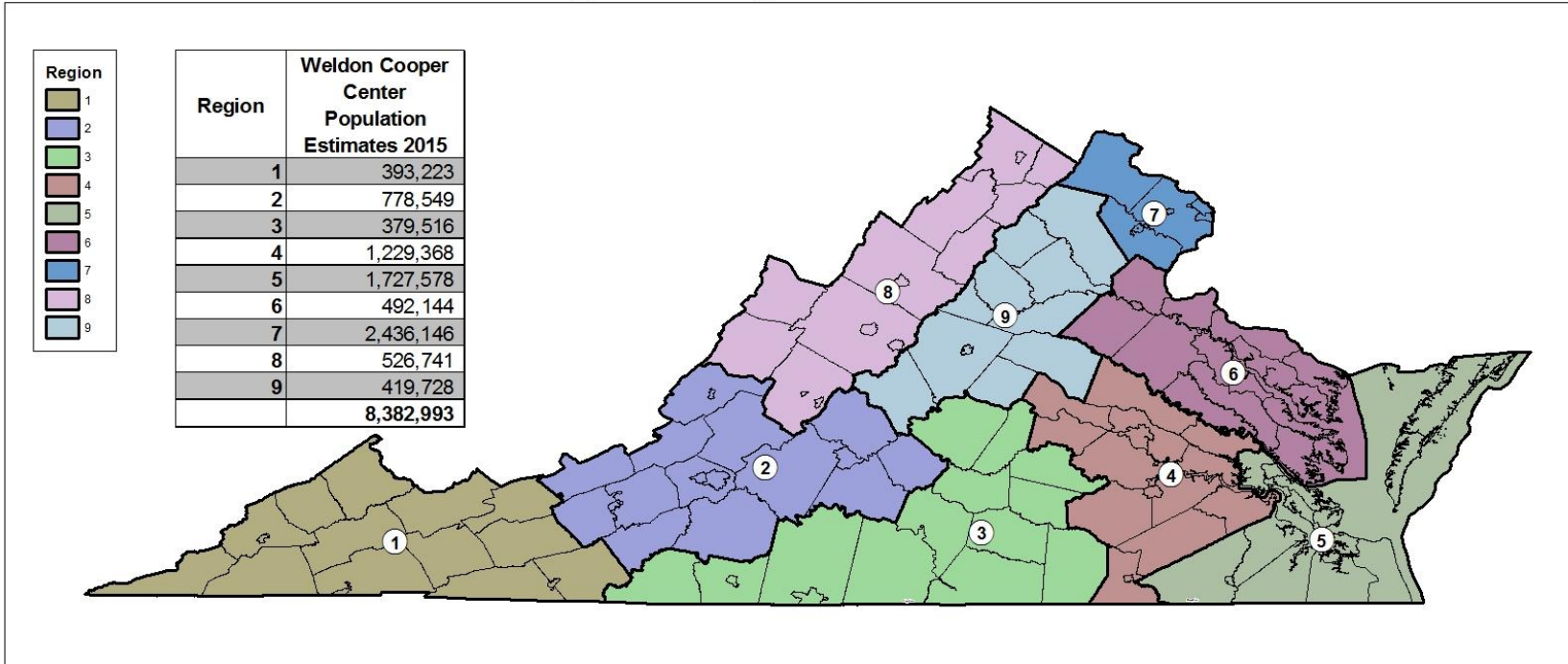


VIRGINIA INITIATIVE FOR  
**GROWTH &  
OPPORTUNITY**  
IN EACH REGION

**REGIONAL BASELINE MEASURES**  
*REGION 2*



# GO Virginia Regional Boundaries



Source: US Census, VA PDC



12/5/2016



VIRGINIA INITIATIVE FOR  
**GROWTH &  
OPPORTUNITY**  
IN EACH REGION

# Region 2

Counties of:

- Alleghany, Amherst, Appomattox, Bedford, Botetourt, Campbell, Craig, Floyd, Franklin, Giles, Montgomery, Pulaski, Roanoke

Cities of:

- Covington, Lynchburg, Radford, Roanoke, Salem



VIRGINIA INITIATIVE FOR  
**GROWTH &  
OPPORTUNITY**  
IN EACH REGION

# Data Included

- **Population**
  - Population Trends
- **Income and Wealth**
  - Per Capita Income
  - Percent of Population in Poverty
- **Employment**
  - Total Employment
  - Unemployment Rate
- **Industry**
  - Employment Trends by Industry Sector
  - Relative Concentration (Location Quotients) by Sector
  - Wages by Industry Sector



VIRGINIA INITIATIVE FOR  
**GROWTH &  
OPPORTUNITY**  
IN EACH REGION

# Data Included

- **Labor Force**
  - Labor Force Participation Rate
  - Commuting inflow/outflow
  - Educational Attainment
- **Firm Growth**
  - Jobs Created by Young Companies (5 years old or less)
  - Jobs Created by Small Companies (less than 20 employees)
  - Sole Proprietorships



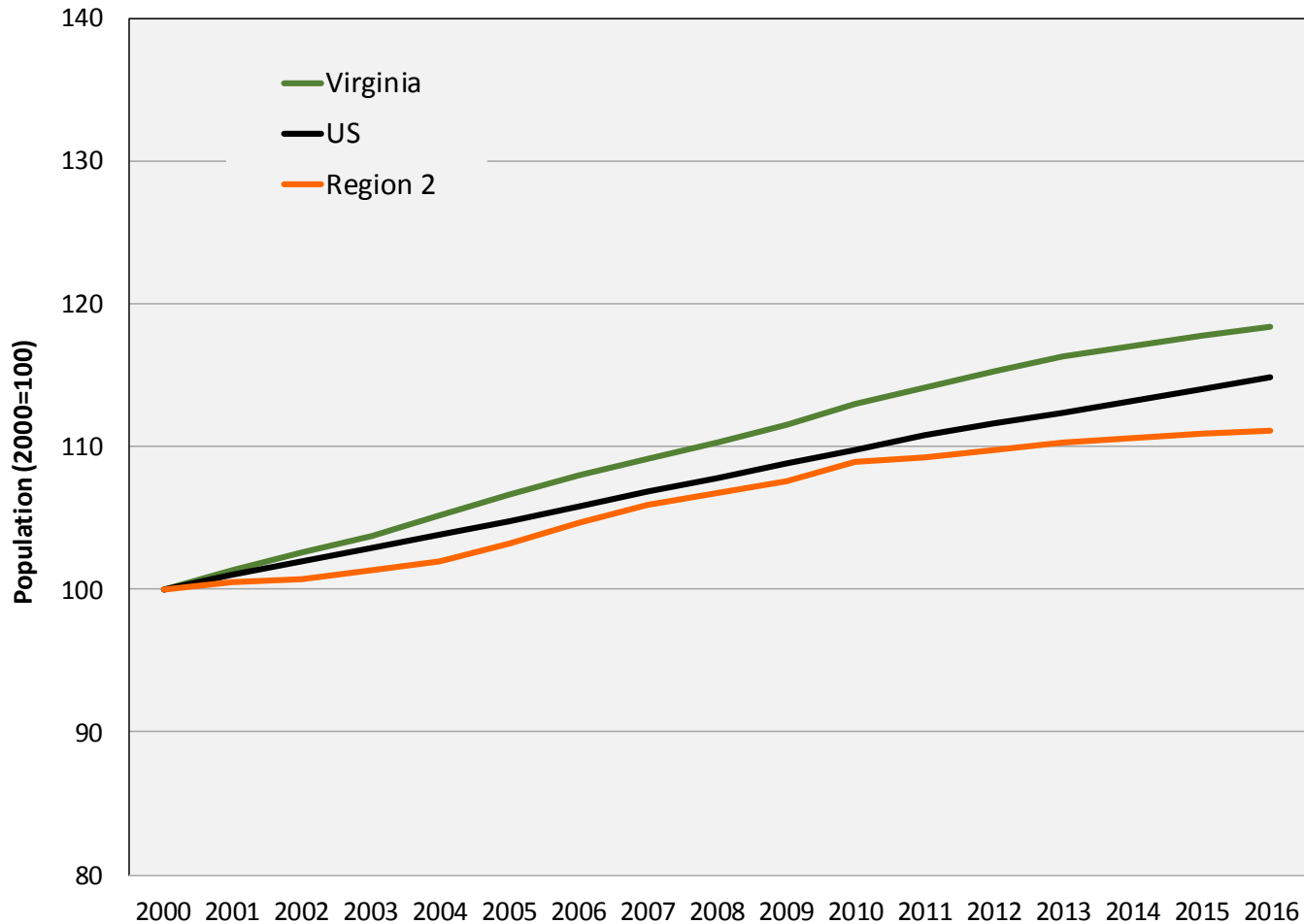
VIRGINIA INITIATIVE FOR  
**GROWTH &  
OPPORTUNITY**  
IN EACH REGION

# Population



VIRGINIA INITIATIVE FOR  
**GROWTH &  
OPPORTUNITY**  
IN EACH REGION

# Population Trends



Source: US Census Bureau, Population Estimates Programs



# Population Trends

## Population Trends: Region 2

	2000	2010	2016	Annual Growth (00-10)	Annual Growth (10-16)
<b>United States</b>	<b>281,424,600</b>	<b>308,745,538</b>	<b>323,127,513</b>	<b>0.9%</b>	<b>0.8%</b>
<b>Virginia</b>	<b>7,105,817</b>	<b>8,025,773</b>	<b>8,411,808</b>	<b>1.2%</b>	<b>0.8%</b>
<b>Region 2</b>	<b>700,085</b>	<b>762,386</b>	<b>777,919</b>	<b>0.9%</b>	<b>0.3%</b>
Alleghany	17,213	16,212	15,595	-0.6%	-0.6%
Amherst	31,854	32,386	31,633	0.2%	-0.4%
Appomattox	13,692	15,036	15,475	0.9%	0.5%
Bedford	60,472	75,003	77,960	2.2%	0.6%
Botetourt	30,648	33,181	33,231	0.8%	0.0%
Campbell	51,082	54,929	54,952	0.7%	0.0%
Craig	5,073	5,175	5,158	0.2%	-0.1%
Floyd	13,909	15,354	15,731	1.0%	0.4%
Franklin	47,546	56,183	56,069	1.7%	0.0%
Giles	16,738	17,316	16,857	0.3%	-0.4%
Montgomery	83,799	94,597	98,602	1.2%	0.7%
Pulaski	35,144	34,806	34,203	-0.1%	-0.3%
Roanoke	85,744	92,408	94,031	0.8%	0.3%
Covington city	6,281	5,952	5,518	-0.5%	-1.3%
Lynchburg city	65,330	75,704	80,212	1.5%	1.0%
Radford city	15,872	16,450	17,483	0.4%	1.0%
Roanoke city	94,941	96,777	99,660	0.2%	0.5%
Salem city	24,747	24,917	25,549	0.1%	0.4%

Source: US Census Bureau, Population Estimates Programs





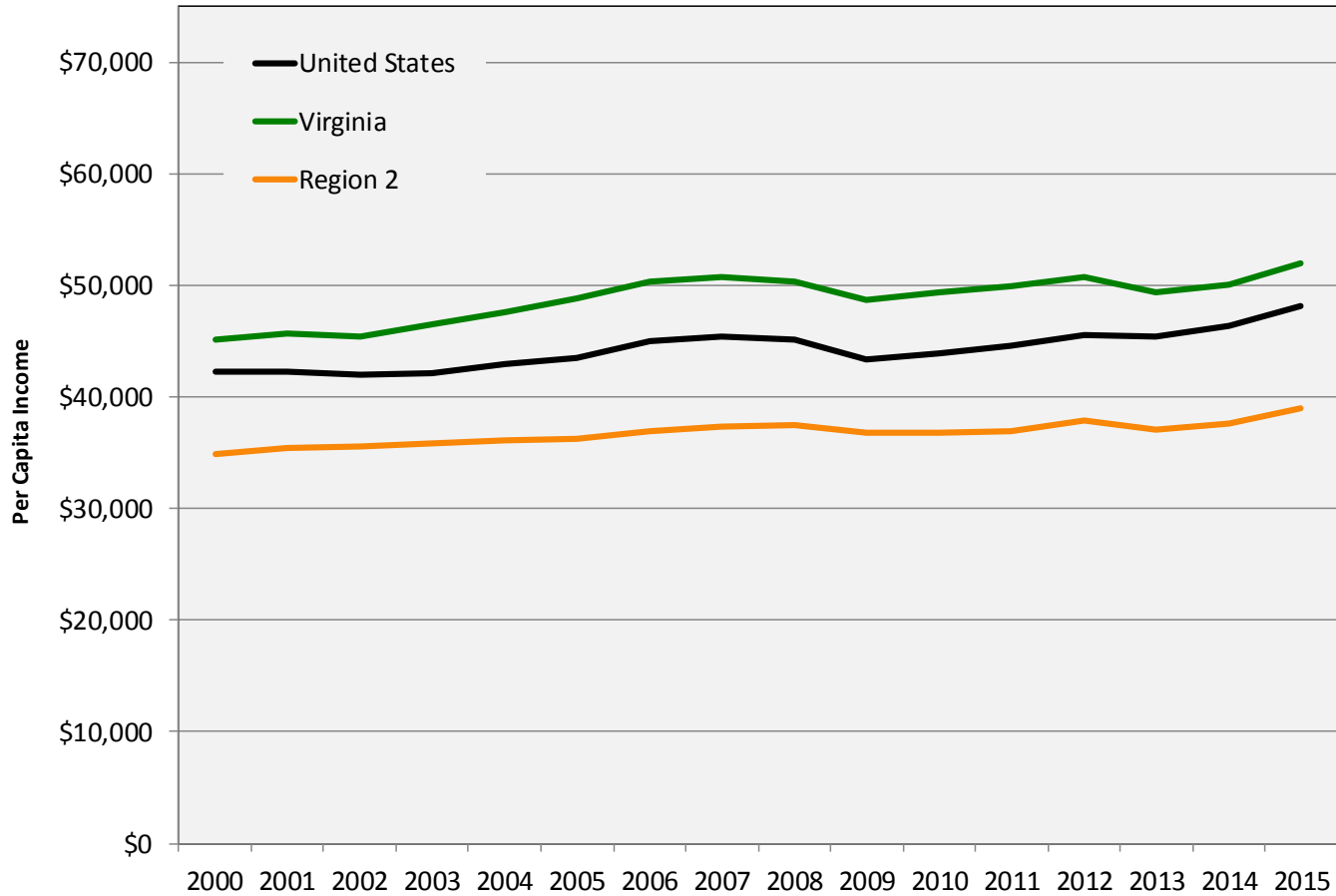
VIRGINIA INITIATIVE FOR  
**GROWTH &  
OPPORTUNITY**  
IN EACH REGION

# Income and Wealth



VIRGINIA INITIATIVE FOR  
**GROWTH &  
OPPORTUNITY**  
IN EACH REGION

# Per Capita Income



Source: US Bureau of Economic Analysis, PCI adjusted for 2015 dollars



# Per Capita Income

## Per Capita Income: Region 2

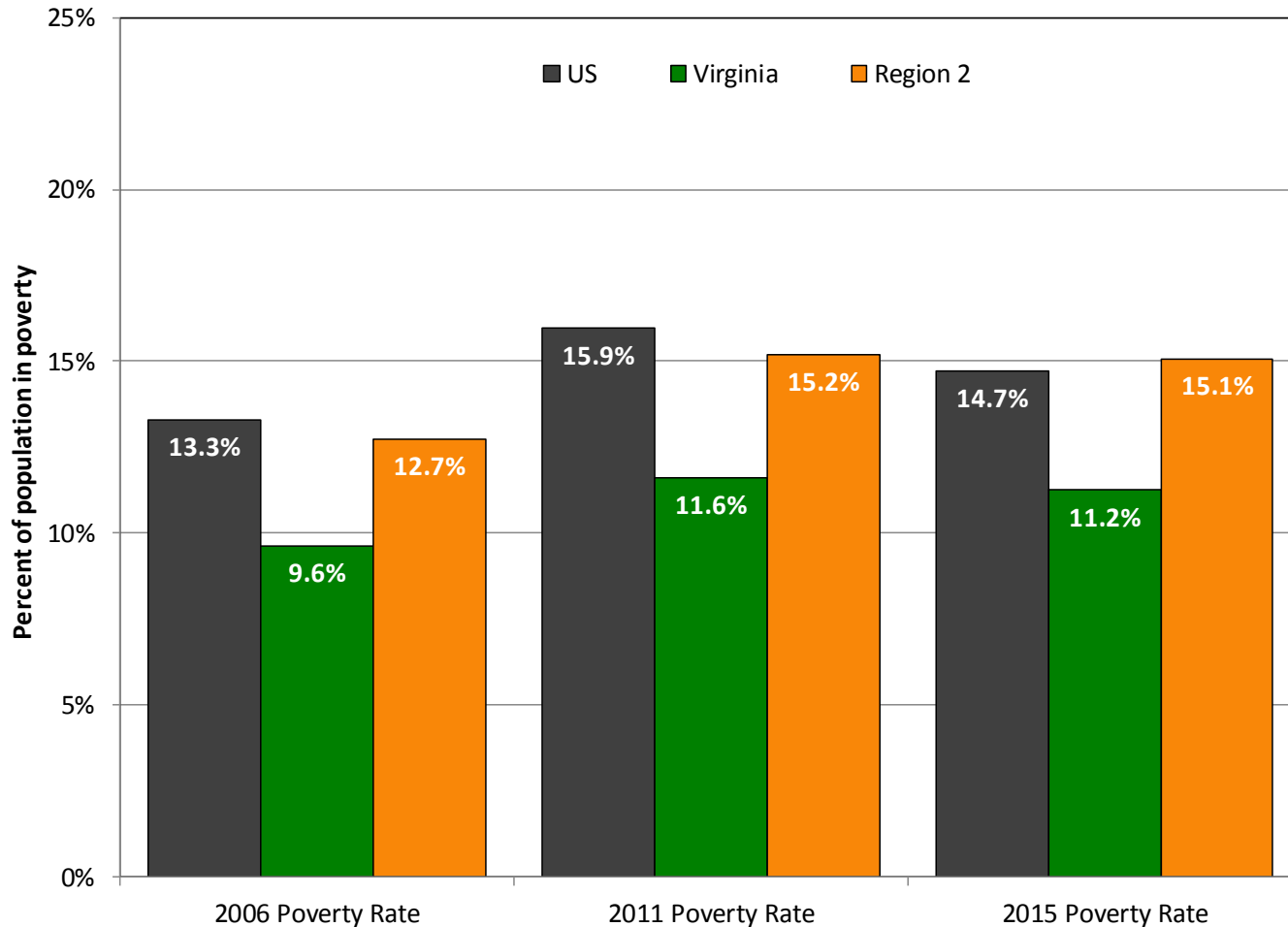
	2000	2010	2015	Annual Growth (00-10)	Annual Growth (10-15)
<b>United States</b>	<b>\$42,231</b>	<b>\$43,902</b>	<b>\$48,112</b>	<b>0.4%</b>	<b>1.5%</b>
<b>Virginia</b>	<b>\$45,144</b>	<b>\$49,421</b>	<b>\$52,052</b>	<b>0.9%</b>	<b>0.9%</b>
<b>Region 2</b>	<b>\$34,930</b>	<b>\$36,863</b>	<b>\$39,012</b>	<b>0.5%</b>	<b>0.9%</b>
Alleghany + Covington, VA*	\$31,805	\$34,886	\$36,989	0.9%	1.0%
Amherst	\$29,954	\$32,407	\$33,981	0.8%	0.8%
Appomattox	\$34,147	\$33,472	\$34,915	-0.2%	0.7%
Bedford	\$39,928	\$39,439	\$41,514	-0.1%	0.9%
Botetourt	\$40,998	\$42,870	\$46,811	0.4%	1.5%
Campbell + Lynchburg, VA*	\$33,919	\$34,789	\$35,559	0.3%	0.4%
Craig	\$31,634	\$32,198	\$34,690	0.2%	1.3%
Floyd	\$29,431	\$32,218	\$34,703	0.9%	1.2%
Franklin	\$33,042	\$34,169	\$36,668	0.3%	1.2%
Giles	\$29,696	\$34,027	\$37,295	1.4%	1.5%
Montgomery + Radford, VA*	\$27,503	\$30,123	\$33,184	0.9%	1.6%
Pulaski	\$32,739	\$33,141	\$36,770	0.1%	1.7%
Roanoke + Salem, VA*	\$43,476	\$45,643	\$48,047	0.5%	0.9%
Roanoke city	\$34,758	\$39,567	\$40,947	1.3%	0.6%

Source: US Bureau of Economic Analysis, PCI adjusted for 2015 dollars



VIRGINIA INITIATIVE FOR  
**GROWTH &  
OPPORTUNITY**  
IN EACH REGION

# Percent of Population in Poverty



Source: US Census Bureau, Small Area Income and Poverty Estimates



# Percent of Population in Poverty

## Poverty Trends: Region 2

	2006 Poverty Rate	2011 Poverty Rate	2015 Poverty Rate
<b>United States</b>	<b>13.3%</b>	<b>15.9%</b>	<b>14.7%</b>
<b>Virginia</b>	<b>9.6%</b>	<b>11.6%</b>	<b>11.2%</b>
<b>Region 2</b>	<b>12.7%</b>	<b>15.2%</b>	<b>15.1%</b>
Alleghany	12.1%	13.5%	18.2%
Amherst	11.8%	13.4%	15.0%
Appomattox	13.3%	14.8%	14.2%
Bedford	7.9%	9.2%	9.1%
Botetourt	6.0%	7.5%	7.4%
Campbell	11.8%	15.2%	11.7%
Craig	10.6%	12.2%	11.9%
Floyd	13.4%	13.5%	11.9%
Franklin	10.6%	13.1%	13.1%
Giles	11.0%	12.6%	10.6%
Montgomery	20.3%	22.5%	20.8%
Pulaski	14.1%	16.5%	15.0%
Roanoke	5.3%	8.0%	7.3%
Covington city	14.6%	16.3%	18.3%
Lynchburg city	19.1%	22.1%	23.1%
Radford city	24.0%	26.8%	32.8%
Roanoke city	16.7%	19.5%	21.3%
Salem city	9.4%	11.1%	10.2%

Source: US Census Bureau, Small Area Income and Poverty Estimates



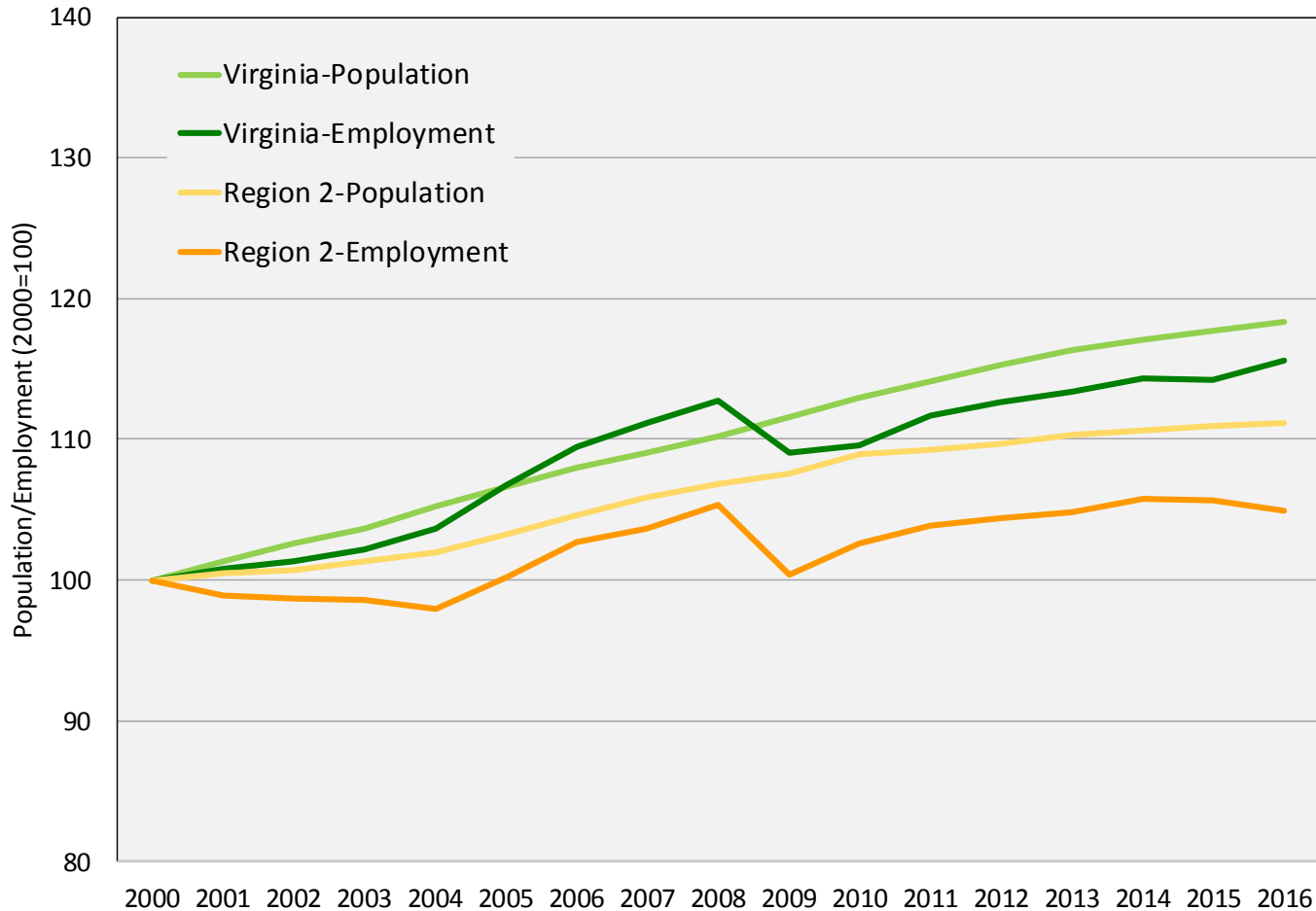
VIRGINIA INITIATIVE FOR  
**GROWTH &  
OPPORTUNITY**  
IN EACH REGION

# Employment



VIRGINIA INITIATIVE FOR  
**GROWTH &  
OPPORTUNITY**  
IN EACH REGION

# Total Employment



Source: US Census Bureau Population Estimates, US Bureau of Labor Statistics Local Area Unemployment Statistics (2016 preliminary)



# Total Employment

## Employment Trends: Region 2

	2000	2010	2016	Annual Growth (00-10)	Annual Growth (10-16)
<b>United States</b>	<b>136,891,000</b>	<b>139,064,000</b>	<b>151,436,000</b>	<b>0.2%</b>	<b>1.4%</b>
<b>Virginia</b>	<b>3,522,865</b>	<b>3,860,386</b>	<b>4,070,260</b>	<b>0.9%</b>	<b>0.9%</b>
<b>Region 2</b>	<b>345,475</b>	<b>354,578</b>	<b>362,604</b>	<b>0.3%</b>	<b>0.4%</b>
Alleghany	7,496	7,264	6,581	-0.3%	-1.6%
Amherst	15,082	15,030	14,626	0.0%	-0.5%
Appomattox	6,599	6,711	6,632	0.2%	-0.2%
Bedford	34,038	36,302	36,031	0.6%	-0.1%
Botetourt	16,178	16,559	16,789	0.2%	0.2%
Campbell	25,892	25,614	24,940	-0.1%	-0.4%
Craig	2,442	2,247	2,289	-0.8%	0.3%
Floyd	6,717	7,567	7,849	1.2%	0.6%
Franklin	23,645	25,216	25,569	0.6%	0.2%
Giles	7,467	7,507	7,563	0.1%	0.1%
Montgomery	39,784	44,140	47,440	1.0%	1.2%
Pulaski	16,607	15,091	15,493	-1.0%	0.4%
Roanoke	45,205	46,137	47,637	0.2%	0.5%
Covington city	2,785	2,403	2,243	-1.5%	-1.1%
Lynchburg city	30,034	32,798	33,421	0.9%	0.3%
Radford city	7,227	7,060	7,955	-0.2%	2.0%
Roanoke city	45,553	45,022	47,096	-0.1%	0.8%
Salem city	12,724	11,910	12,451	-0.7%	0.7%

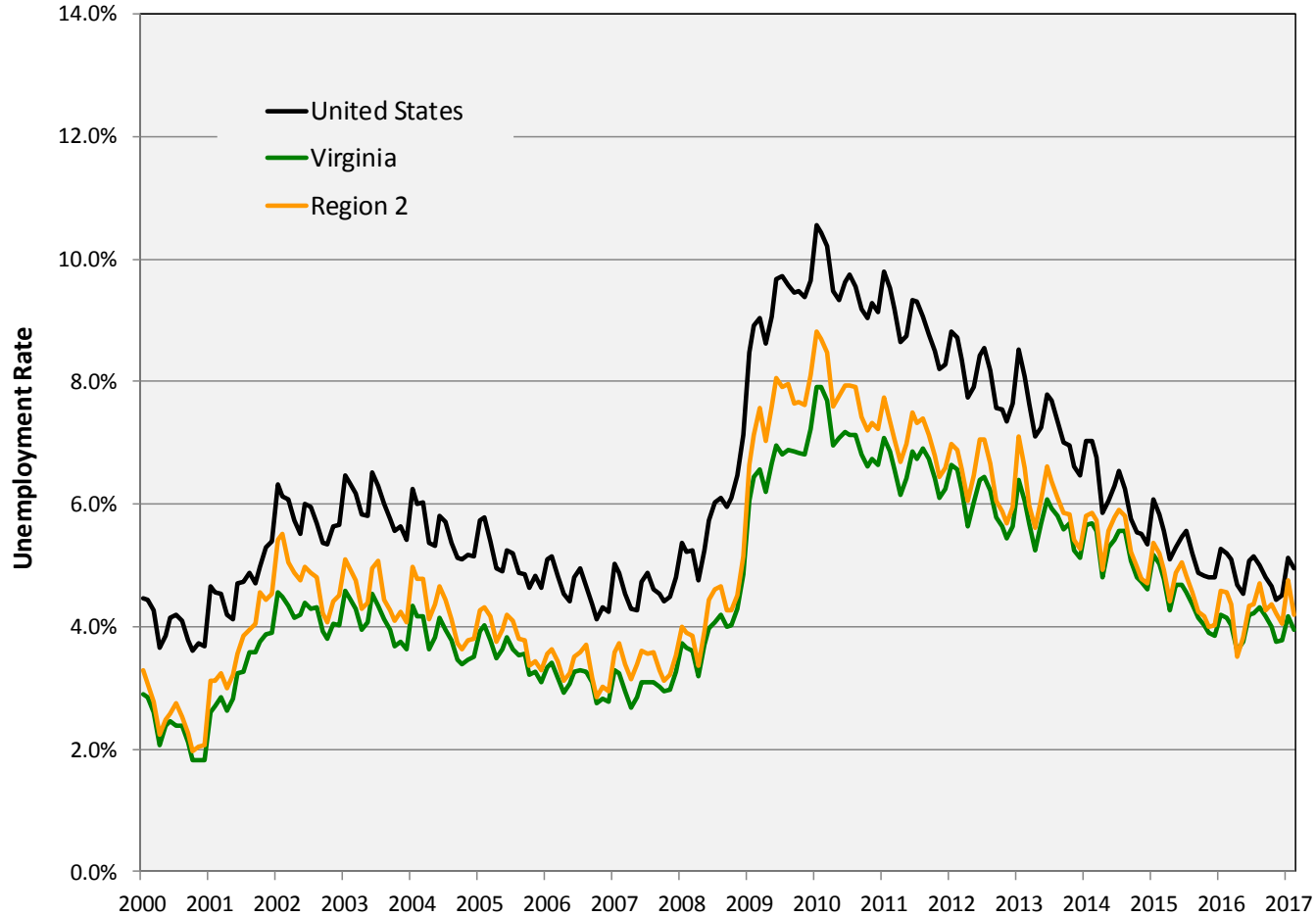
Source: US BLS Local Area Unemployment Statistics (2016 preliminary)





VIRGINIA INITIATIVE FOR  
**GROWTH &  
OPPORTUNITY**  
IN EACH REGION

# Unemployment Rate



Source: US Bureau of Labor Statistics, Local Area Unemployment Statistics



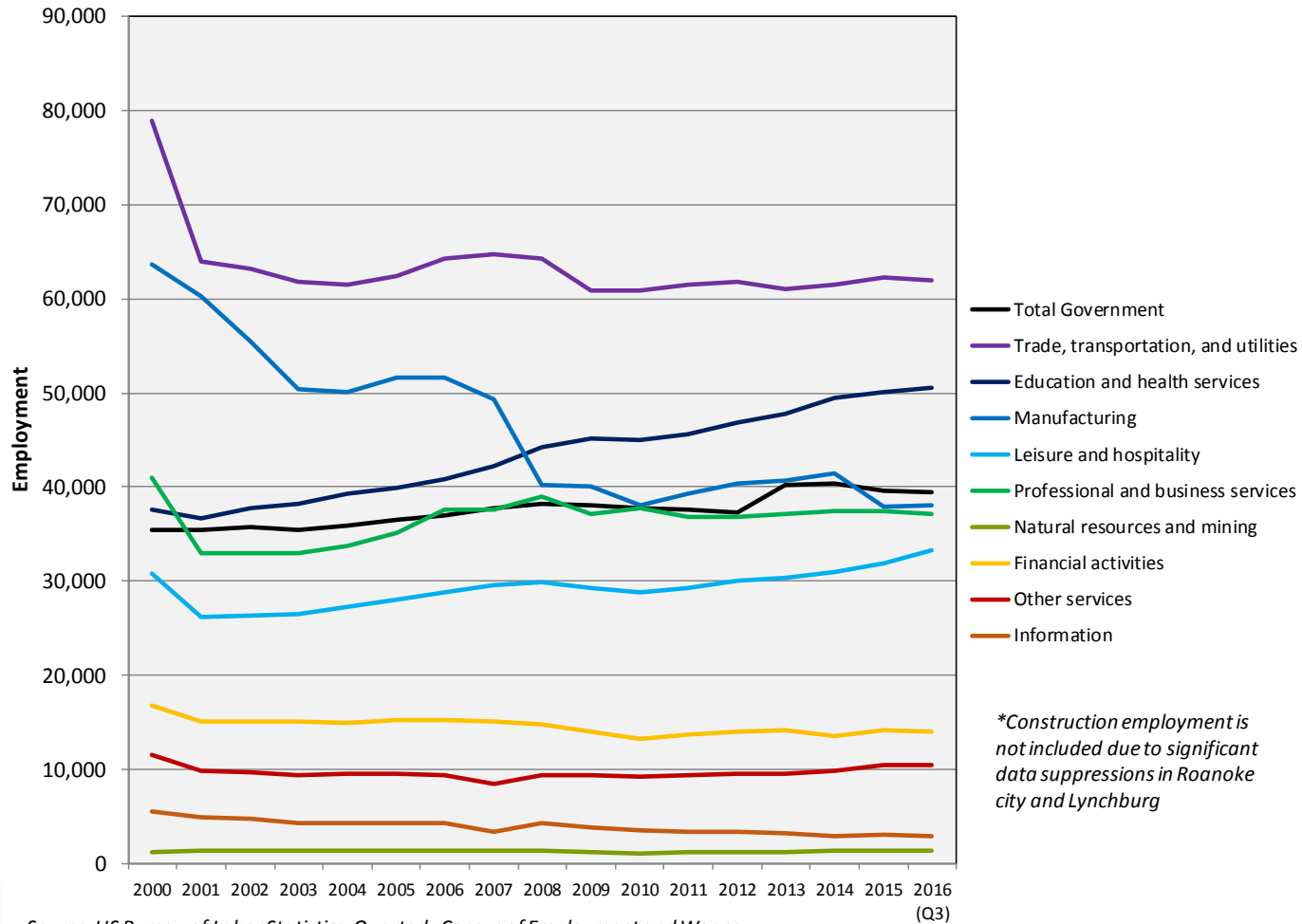
VIRGINIA INITIATIVE FOR  
**GROWTH &  
OPPORTUNITY**  
IN EACH REGION

# Industry



VIRGINIA INITIATIVE FOR  
**GROWTH &  
 OPPORTUNITY**  
 IN EACH REGION

# Employment Trends by Industry Sector



Source: US Bureau of Labor Statistics, Quarterly Census of Employment and Wages

*\*Construction employment is not included due to significant data suppressions in Roanoke city and Lynchburg*



# Employment Trends by Industry Sector

## Region 2: Industry Sectors, 2015\*

Sector	Employment#	LQ	Region 2 Avg Wage	US Avg Wage
Trade, transportation, and utilities	62,351	1.00	\$33,258	\$44,321
Education and health services	50,158	1.02	\$45,666	\$47,383
Manufacturing	37,869	1.32	\$54,667	\$64,305
Professional and business services	37,508	0.82	\$46,603	\$69,270
Leisure and hospitality	31,859	0.90	\$14,791	\$21,807
Local government	27,518	0.85	\$35,340	\$47,573
Financial activities	14,186	0.78	\$50,711	\$87,915
Construction	13,044	0.87	\$43,022	\$57,009
Other services	10,420	1.03	\$26,982	\$35,116
State government	7,211	0.68	\$40,492	\$55,878
Federal government	4,919	0.76	\$69,160	\$77,900
Information	2,973	0.46	\$51,673	\$95,098
Natural resources and mining	1,418	0.30	\$36,891	\$58,461

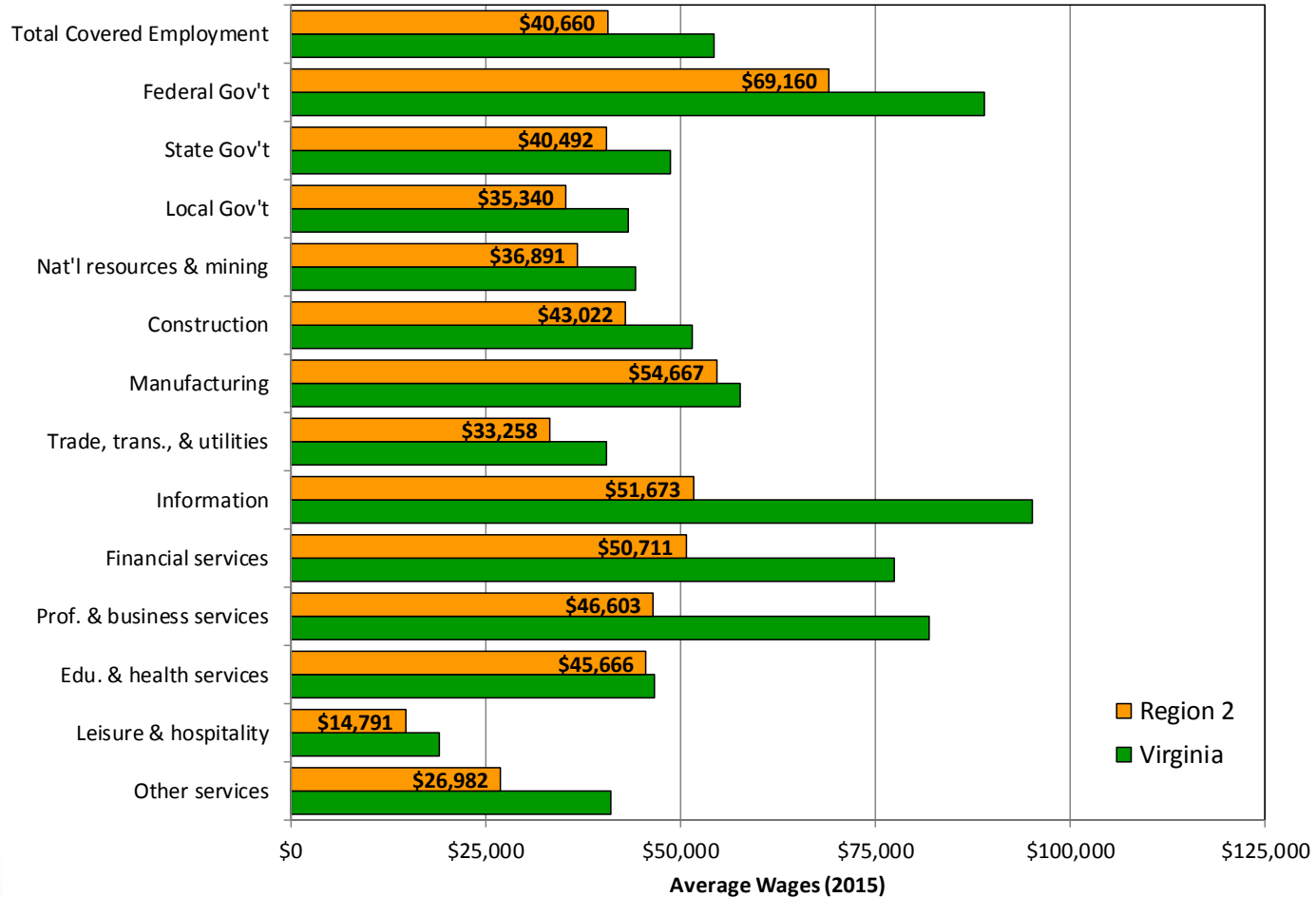
Source: US Bureau of Labor Statistics, Quarterly Census of Employment and Wages

\*2015 is the most recently available complete year

#Does not include suppressed employment



# Industry Wages by Sector



Source: US Bureau of Labor Statistics, Quarterly Census of Employment and Wages



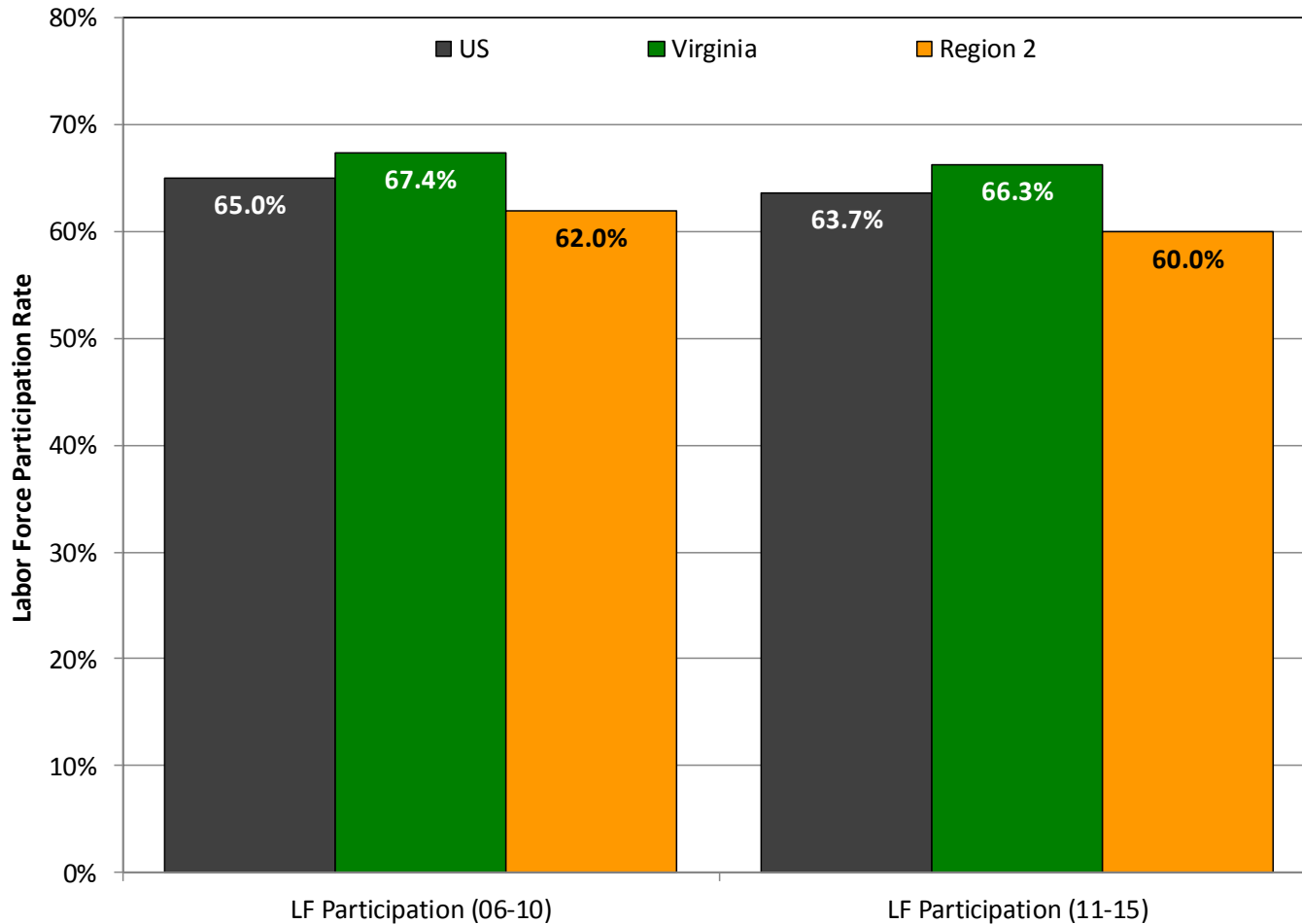
VIRGINIA INITIATIVE FOR  
**GROWTH &  
OPPORTUNITY**  
IN EACH REGION

# Labor Force



VIRGINIA INITIATIVE FOR  
**GROWTH &  
OPPORTUNITY**  
IN EACH REGION

# Labor Force Participation Rate



Source: US Census Bureau, 2006-2010 and 2011-2015 American Community Surveys



VIRGINIA INITIATIVE FOR  
**GROWTH &  
 OPPORTUNITY**  
 IN EACH REGION

# Labor Force Participation Rate

## Labor Force Participation Rate: Region 2

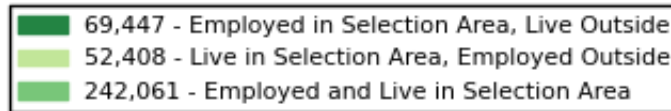
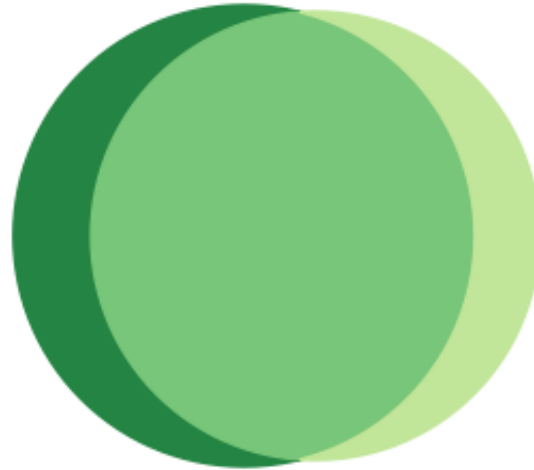
	LF Participation (06-10)	LF Participation (11-15)
<b>United States</b>	<b>65.0%</b>	<b>63.7%</b>
<b>Virginia</b>	<b>67.4%</b>	<b>66.3%</b>
<b>Region 2</b>	<b>62.0%</b>	<b>60.0%</b>
Alleghany	58.5%	51.9%
Amherst	61.4%	59.1%
Appomattox	63.3%	57.2%
Bedford	64.7%	61.1%
Botetourt	64.4%	62.7%
Campbell	63.7%	61.8%
Craig	66.0%	53.5%
Floyd	63.4%	63.2%
Franklin	59.7%	57.6%
Giles	55.9%	57.6%
Montgomery	59.7%	58.4%
Pulaski	59.0%	58.0%
Roanoke	67.3%	62.6%
Covington city	55.5%	52.3%
Lynchburg city	59.7%	57.9%
Radford city	52.9%	49.8%
Roanoke city	63.1%	63.9%
Salem city	61.8%	62.9%

Source: US Census Bureau, 2006-2010 and 2011-2015 American Community Surveys



# Commuting (Inflow/Outflow)

Inflow/Outflow Job Counts in 2014



## Inflow/Outflow Job Counts (Primary Jobs): Region 2

	2014	
	Count	Share
Employed in the Selection Area	311,508	100.00%
Employed in the Selection Area but Living Outside	69,447	22.30%
Employed and Living in the Selection Area	242,061	77.70%
Living in the Selection Area	294,469	100.00%
Living in the Selection Area but Employed Outside	52,408	17.80%
Living and Employed in the Selection Area	242,061	82.20%

Source: US Census Bureau, Longitudinal Employer-Household Dynamics OnTheMap, 2014



# Commuting (Inflow/Outflow)

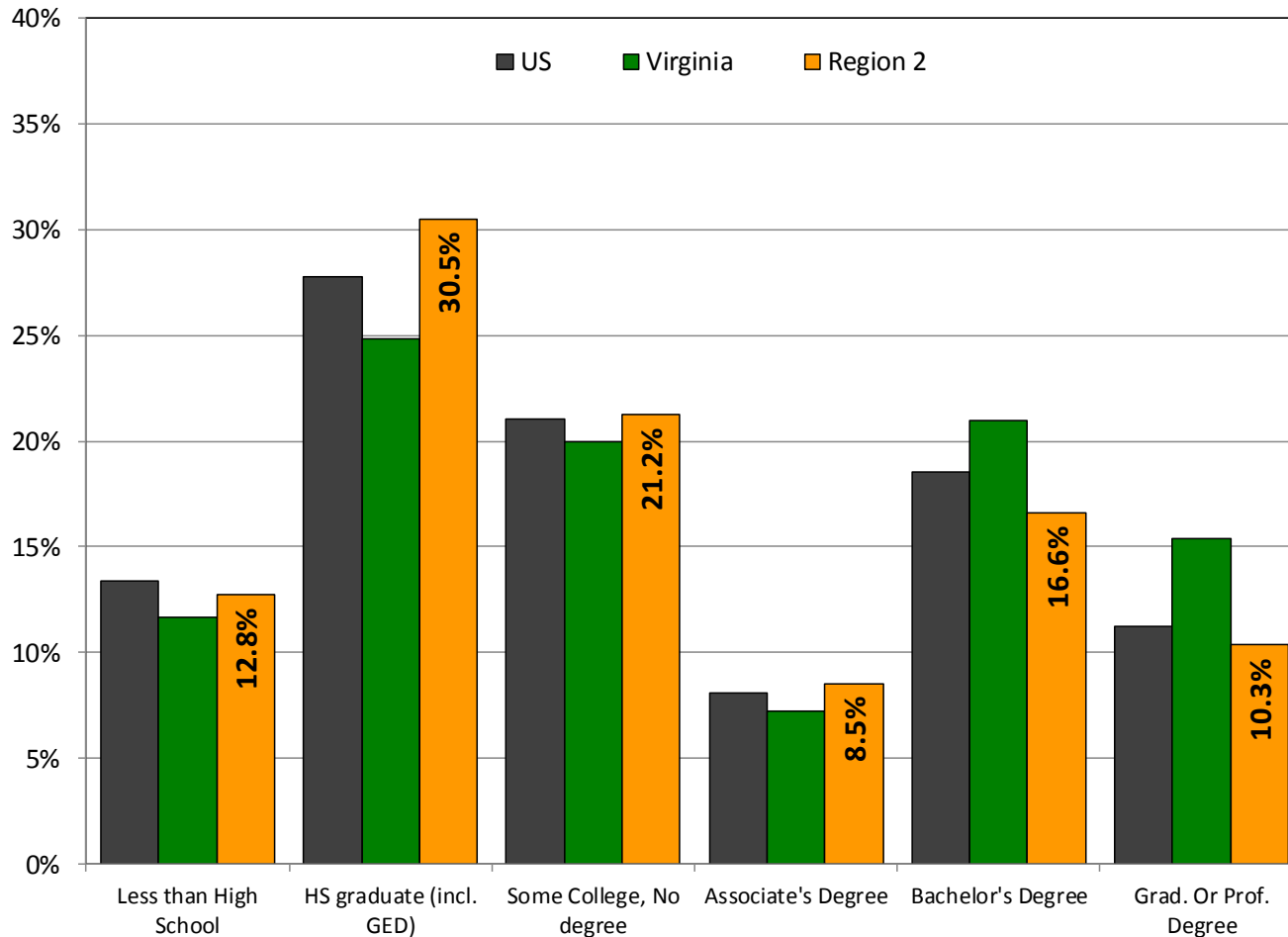
## Commuting Patterns: Region 2

	Employed in Selection Area	Employed in the Selection Area but Living Outside		Employed and Living in the Selection Area		Living in the Selection Area	Living in the Selection Area but Employed Outside		Living and Employed in the Selection Area	
<b>Virginia</b>	<b>3,313,939</b>	<b>286,033</b>	<b>8.6%</b>	<b>3,027,906</b>	<b>91.4%</b>	<b>3,377,666</b>	<b>349,760</b>	<b>10.4%</b>	<b>3,027,906</b>	<b>89.6%</b>
<b>Region 2</b>	<b>311,508</b>	<b>69,447</b>	<b>22.3%</b>	<b>242,061</b>	<b>77.7%</b>	<b>294,469</b>	<b>52,408</b>	<b>17.8%</b>	<b>242,061</b>	<b>82.2%</b>
Alleghany	3,319	1,939	58.4%	1,380	41.6%	5,897	4,517	76.6%	1,380	23.4%
Amherst	9,129	5,784	63.4%	3,345	36.6%	12,952	9,607	74.2%	3,345	25.8%
Appomattox	2,568	1,416	55.1%	1,152	44.9%	6,978	5,826	83.5%	1,152	16.5%
Bedford	17,754	9,961	56.1%	7,793	43.9%	31,225	23,432	75.0%	7,793	25.0%
Botetourt	9,618	6,715	69.8%	2,903	30.2%	14,171	11,268	79.5%	2,903	20.5%
Campbell	16,314	10,986	67.3%	5,328	32.7%	21,775	16,447	75.5%	5,328	24.5%
Craig	576	229	39.8%	347	60.2%	1,927	1,580	82.0%	347	18.0%
Floyd	2,660	1,008	37.9%	1,652	62.1%	5,908	4,256	72.0%	1,652	28.0%
Franklin	13,960	5,870	42.0%	8,090	58.0%	20,527	12,437	60.6%	8,090	39.4%
Giles	4,371	2,345	53.6%	2,026	46.4%	6,393	4,367	68.3%	2,026	31.7%
Montgomery	37,245	19,477	52.3%	17,768	47.7%	30,643	12,875	42.0%	17,768	58.0%
Pulaski	12,876	7,761	60.3%	5,115	39.7%	13,690	8,575	62.6%	5,115	37.4%
Roanoke	35,253	25,137	71.3%	10,116	28.7%	41,297	31,181	75.5%	10,116	24.5%
Covington city	3,351	2,693	80.4%	658	19.6%	2,335	1,677	71.8%	658	28.2%
Lynchburg city	45,495	32,695	71.9%	12,800	28.1%	25,421	12,621	49.6%	12,800	50.4%
Radford city	7,224	5,959	82.5%	1,265	17.5%	4,480	3,215	71.8%	1,265	28.2%
Roanoke city	66,657	49,325	74.0%	17,332	26.0%	38,702	21,370	55.2%	17,332	44.8%
Salem city	23,138	20,146	87.1%	2,992	12.9%	10,148	7,156	70.5%	2,992	29.5%

Source: US Census Bureau, Longitudinal Employer-Household Dynamics OnTheMap, 2014



# Educational Attainment



Source: US Census Bureau, 2011-2015 American Community Survey



# Educational Attainment

## Educational Attainment: Region 2

	2006-2010						2011-2015					
	Less than High School	HS graduate (incl. GED)	Some College, No degree	Associate's Degree	Bachelor's Degree	Grad. Or Prof. Degree	Less than High School	HS graduate (incl. GED)	Some College, No degree	Associate's Degree	Bachelor's Degree	Grad. Or Prof. Degree
<b>United States</b>	14.9%	29.0%	20.6%	7.5%	17.6%	10.3%	13.3%	27.8%	21.1%	8.1%	18.5%	11.2%
<b>Virginia</b>	13.9%	26.0%	19.6%	6.7%	19.9%	13.9%	11.7%	24.8%	19.9%	7.3%	21.0%	15.4%
<b>Region 2</b>	16.1%	31.7%	20.7%	7.6%	14.9%	8.9%	12.8%	30.5%	21.2%	8.5%	16.6%	10.3%
Alleghany	18.2%	38.3%	18.8%	9.9%	9.7%	5.2%	16.4%	36.9%	22.3%	8.6%	9.9%	5.8%
Amherst	21.7%	35.0%	20.9%	6.8%	10.1%	5.5%	17.2%	35.7%	20.7%	8.1%	12.2%	6.1%
Appomattox	20.2%	41.9%	20.6%	5.5%	7.7%	4.1%	16.0%	36.1%	21.4%	8.8%	10.1%	7.6%
Bedford	15.0%	32.8%	21.2%	7.1%	15.5%	8.5%	11.9%	31.0%	21.9%	8.5%	17.3%	9.4%
Botetourt	10.9%	35.9%	21.3%	9.1%	16.1%	6.8%	8.9%	35.0%	21.4%	8.5%	17.7%	8.5%
Campbell	17.4%	35.8%	22.1%	8.4%	12.2%	4.1%	15.2%	36.1%	21.4%	8.1%	12.3%	6.9%
Craig	16.6%	39.7%	20.5%	9.6%	8.4%	5.2%	10.4%	48.4%	19.7%	6.8%	11.8%	2.9%
Floyd	20.6%	34.4%	18.7%	7.0%	14.0%	5.3%	16.8%	35.6%	20.8%	8.6%	12.1%	6.0%
Franklin	20.0%	37.0%	21.2%	6.6%	9.5%	5.7%	16.0%	32.0%	23.4%	8.1%	13.1%	7.5%
Giles	19.7%	37.4%	21.0%	5.9%	10.1%	6.0%	16.0%	40.0%	19.5%	8.6%	9.5%	6.3%
Montgomery	11.9%	24.2%	17.4%	7.2%	18.9%	20.5%	8.7%	21.8%	16.3%	7.4%	23.2%	22.5%
Pulaski	20.9%	33.7%	20.3%	11.2%	9.7%	4.2%	16.0%	34.2%	21.5%	10.5%	11.4%	6.4%
Roanoke	10.3%	26.0%	22.5%	8.6%	21.2%	11.3%	8.1%	26.4%	21.4%	10.0%	22.7%	11.4%
Covington city	19.1%	39.3%	23.6%	7.6%	6.5%	3.9%	16.8%	43.5%	22.9%	7.6%	6.0%	3.3%
Lynchburg city	16.9%	28.7%	20.4%	5.7%	17.5%	10.8%	11.7%	25.1%	22.3%	7.8%	19.9%	13.2%
Radford city	11.1%	24.7%	19.4%	9.6%	22.3%	12.8%	10.6%	22.6%	19.0%	12.3%	20.7%	14.8%
Roanoke city	19.2%	30.4%	21.1%	7.4%	14.2%	7.8%	15.6%	30.4%	22.5%	7.9%	14.8%	8.8%
Salem city	12.5%	31.3%	19.4%	7.7%	18.0%	11.1%	10.0%	29.8%	22.0%	9.8%	17.1%	11.3%

Source: US Census Bureau, 2006-2010 and 2011-2015 American Community Surveys



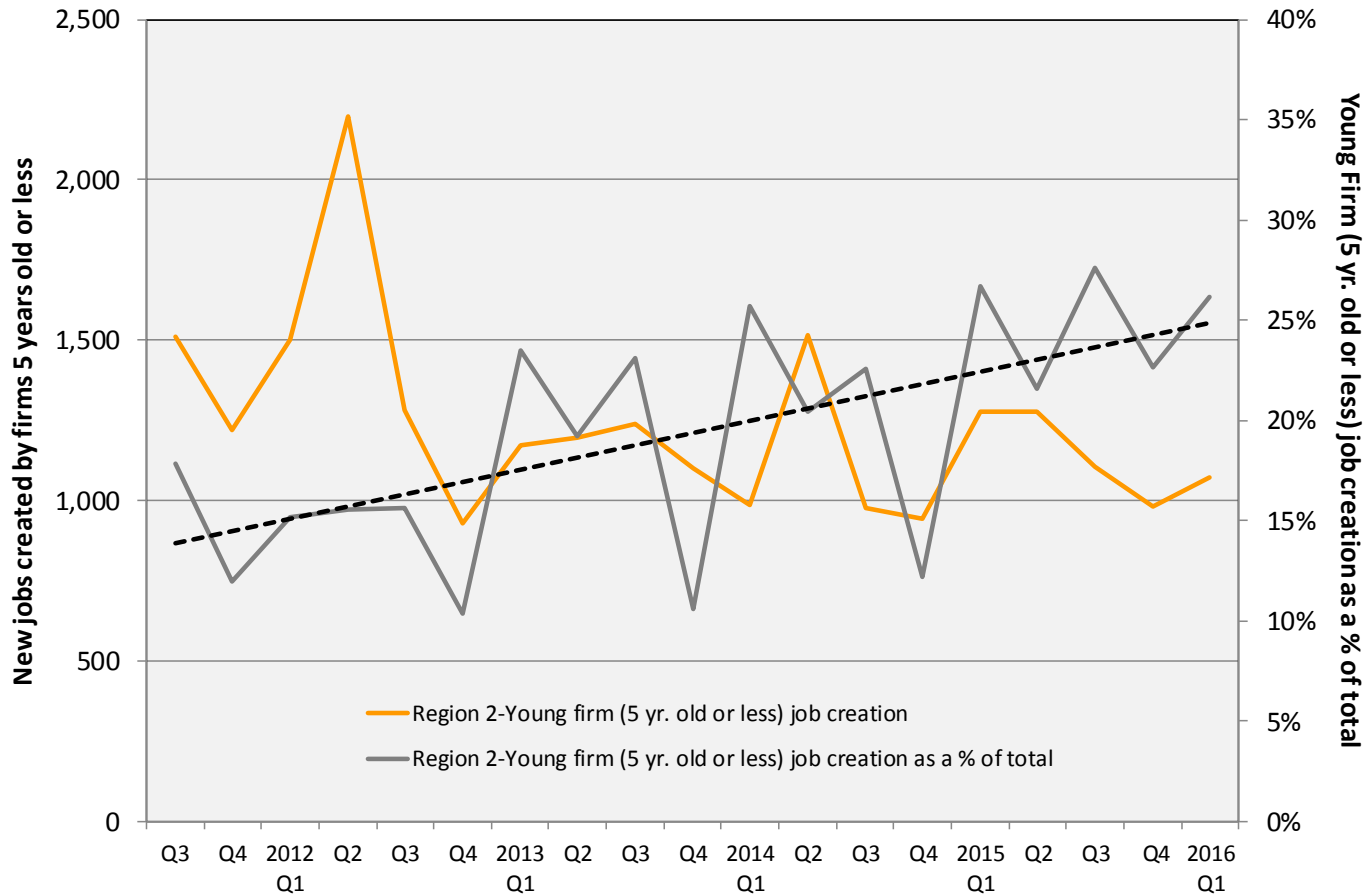
VIRGINIA INITIATIVE FOR  
**GROWTH &  
OPPORTUNITY**  
IN EACH REGION

# Firm Growth



VIRGINIA INITIATIVE FOR  
**GROWTH &  
OPPORTUNITY**  
IN EACH REGION

# Jobs Created by Young Companies (5 years old or less)



Source: US Census Bureau, Longitudinal Employer-Household Dynamics, Quarterly Workforce Indicators



# Jobs Created by Young Companies (5 years old or less)

## Region 2: Young firm (5 yrs old or less) job creation

	2012 Average	2015 Average	2012 as a % of Total	2015 as a % of Total
<b>US</b>	<b>1,542,135</b>	<b>1,674,953</b>	<b>25.2%</b>	<b>26.7%</b>
<b>Virginia</b>	<b>42,118</b>	<b>39,288</b>	<b>19.4%</b>	<b>26.2%</b>
<b>Region 2</b>	<b>3,193</b>	<b>2,961</b>	<b>14.3%</b>	<b>24.2%</b>
Alleghany	35	32	19.1%	24.1%
Amherst	87	86	19.7%	30.0%
Appomattox	33	43	20.7%	32.1%
Bedford	312	256	26.3%	29.2%
Botetourt	105	156	16.0%	35.8%
Campbell	163	186	17.8%	23.6%
Craig	3	2	14.8%	4.5%
Floyd	59	76	32.9%	43.0%
Franklin	179	216	18.6%	29.7%
Giles	31	45	11.9%	26.9%
Montgomery	410	438	19.1%	29.8%
Pulaski	130	103	23.0%	17.7%
Roanoke	478	324	22.8%	25.6%
Covington city	36	32	28.9%	34.1%
Lynchburg city	361	337	8.2%	21.6%
Radford city	38	46	15.4%	24.5%
Roanoke city	558	394	8.4%	15.8%
Salem city	175	192	14.4%	23.7%

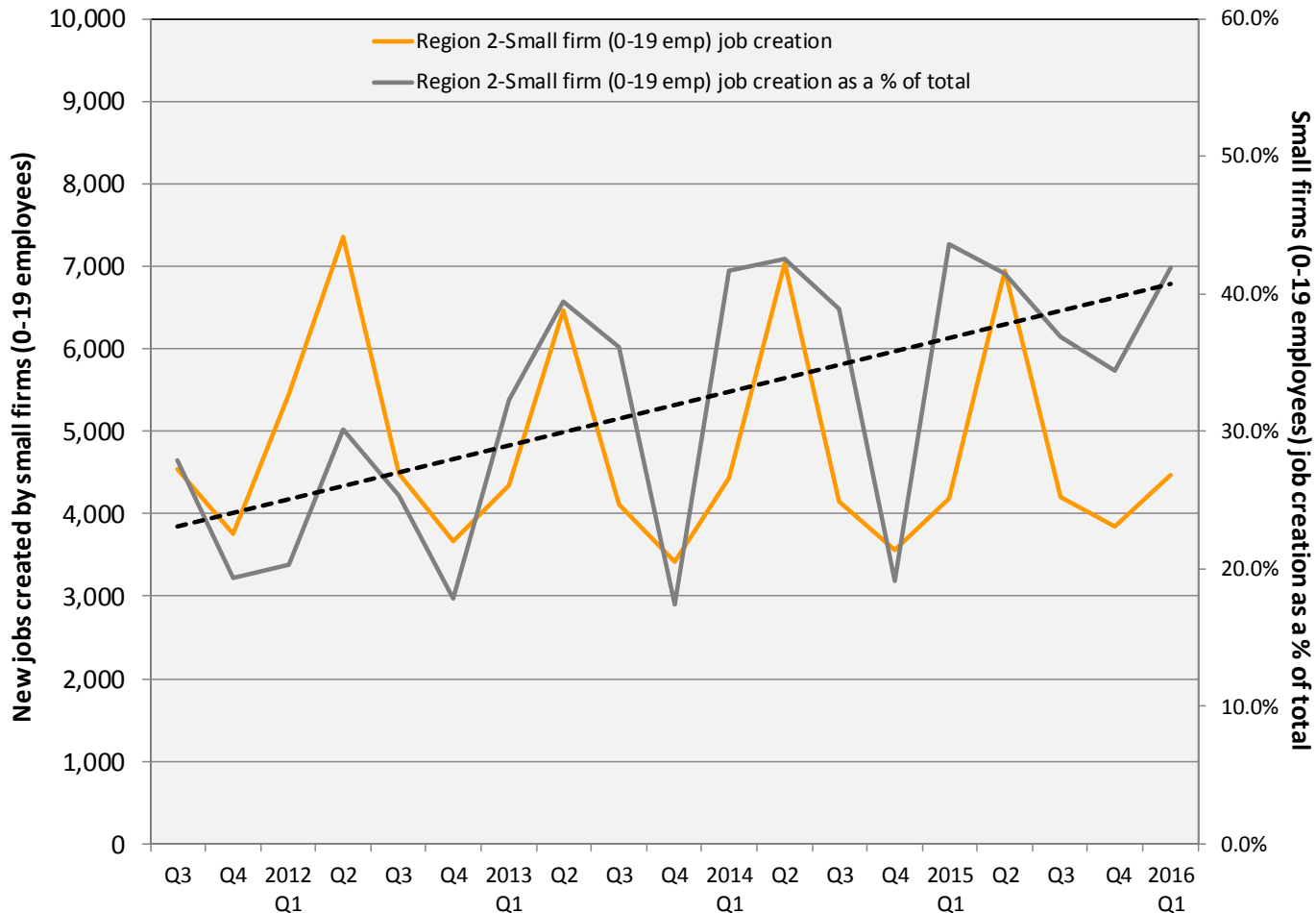
Source: US Census Bureau, LEHD, QWI



VIRGINIA INITIATIVE FOR  
**GROWTH &  
 OPPORTUNITY**  
 IN EACH REGION

# Jobs Created by Small Companies

## (less than 20 employees)



Source: US Census Bureau, Longitudinal Employer-Household Dynamics, Quarterly Workforce Indicators





VIRGINIA INITIATIVE FOR  
**GROWTH &  
 OPPORTUNITY**  
 IN EACH REGION

# Jobs Created by Small Companies

(less than 20 employees)

**Region 2: Small firm (0-19 Emp.) job creation**

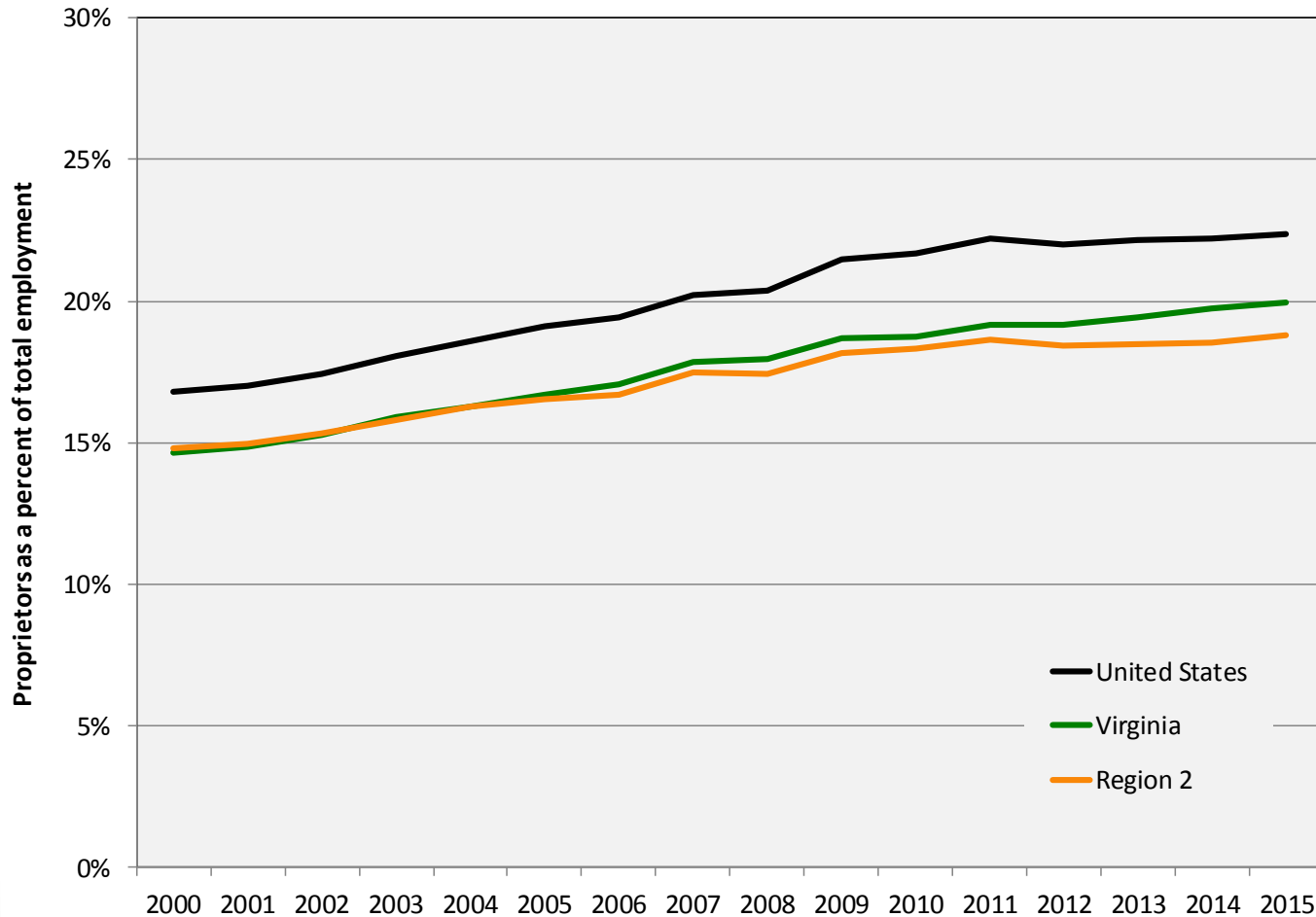
	2012 Average	2015 Average	2012 as a % of Total	2015 as a % of Total
<b>US</b>	<b>2,203,129</b>	<b>2,268,500</b>	<b>36.0%</b>	<b>36.2%</b>
<b>Virginia</b>	<b>58,797</b>	<b>54,683</b>	<b>27.1%</b>	<b>36.4%</b>
<b>Region 2</b>	<b>5,237</b>	<b>4,792</b>	<b>23.4%</b>	<b>39.2%</b>
Alleghany	80	71	43.5%	53.1%
Amherst	144	147	32.5%	51.1%
Appomattox	98	97	61.0%	73.5%
Bedford	525	492	44.2%	56.0%
Botetourt	231	196	35.1%	44.9%
Campbell	371	369	40.6%	46.9%
Craig	11	20	47.7%	51.3%
Floyd	123	130	69.2%	73.4%
Franklin	385	376	40.1%	51.7%
Giles	81	76	31.1%	45.7%
Montgomery	642	567	30.0%	38.6%
Pulaski	189	207	33.3%	35.5%
Roanoke	539	522	25.7%	41.2%
Covington city	67	50	53.7%	53.8%
Lynchburg city	640	521	14.5%	33.5%
Radford city	73	63	29.7%	33.9%
Roanoke city	744	637	11.3%	25.5%
Salem city	297	252	24.4%	31.1%

Source: US Census Bureau, LEHD, QWI



VIRGINIA INITIATIVE FOR  
**GROWTH &  
OPPORTUNITY**  
IN EACH REGION

# Sole Proprietorships as a percent of total employment



Source: US Bureau of Economic Analysis



# Sole Proprietorships

Proprietors as a percent of total employment: Region 2

	2000 Proprietors	2010 Proprietors	2015 Proprietors	Annual Growth (00-10)	Annual Growth (10-15)	Proprietors as a % of total employment
<b>United States</b>	<b>27,760,800</b>	<b>37,508,700</b>	<b>42,561,400</b>	<b>3.1%</b>	<b>2.1%</b>	<b>22.4%</b>
<b>Virginia</b>	<b>644,573</b>	<b>890,602</b>	<b>1,008,978</b>	<b>3.3%</b>	<b>2.1%</b>	<b>19.9%</b>
<b>Region 2</b>	<b>63,032</b>	<b>76,840</b>	<b>82,204</b>	<b>2.0%</b>	<b>1.1%</b>	<b>18.8%</b>
Alleghany + Covington, VA*	1,735	1,353	1,509	-2.5%	1.8%	15.2%
Amherst	3,001	2,921	2,926	-0.3%	0.0%	23.8%
Appomattox	1,976	1,570	1,711	-2.3%	1.4%	33.4%
Bedford	7,379	9,071	9,714	2.1%	1.1%	32.0%
Botetourt	4,750	3,979	4,225	-1.8%	1.0%	27.3%
Campbell + Lynchburg, VA*	7,713	12,131	13,098	4.6%	1.3%	14.9%
Craig	888	637	673	-3.3%	0.9%	47.1%
Floyd	2,667	2,432	2,571	-0.9%	0.9%	43.3%
Franklin	3,901	6,746	7,122	5.6%	0.9%	31.1%
Giles	1,485	1,795	1,758	1.9%	-0.3%	26.0%
Montgomery + Radford, VA*	7,131	10,194	11,213	3.6%	1.6%	17.6%
Pulaski	2,329	2,690	2,748	1.5%	0.4%	15.6%
Roanoke + Salem, VA*	12,784	12,905	13,227	0.1%	0.4%	17.4%
Roanoke city	5,293	8,416	9,709	4.7%	2.4%	11.8%

Source: US Bureau of Economic Analysis



VIRGINIA INITIATIVE FOR  
**GROWTH &  
OPPORTUNITY**  
IN EACH REGION

# Thank You

Terry L. Clower Ph.D. – [tclower@gmu.edu](mailto:tclower@gmu.edu)

Mark C. White Ph.D. – [mwhite@gmu.edu](mailto:mwhite@gmu.edu)

Spencer A. Shanholtz – [sshanhol@gmu.edu](mailto:sshanhol@gmu.edu)



[cra.gmu.edu](http://cra.gmu.edu)

[@GMU\\_CRA](#)