

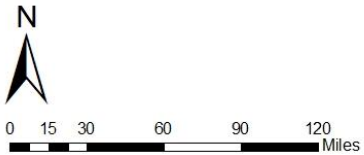
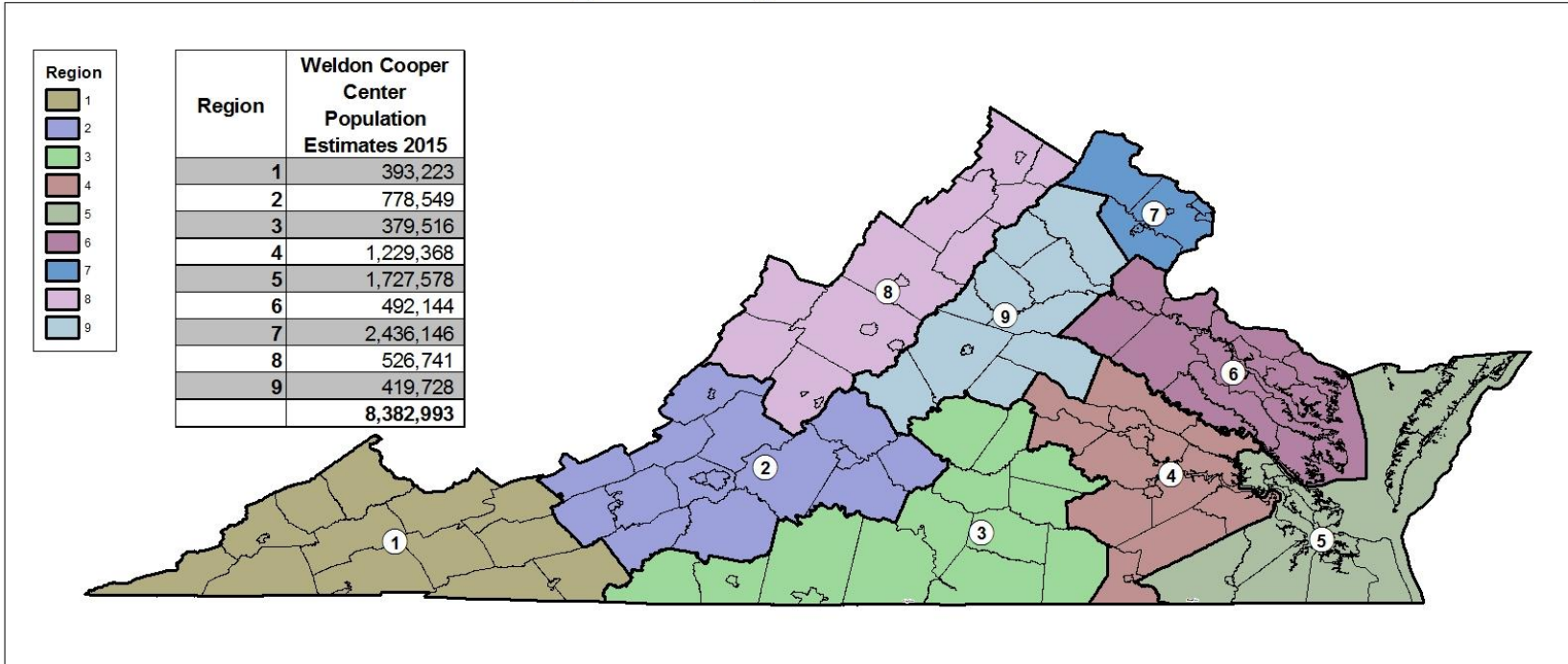


VIRGINIA INITIATIVE FOR
**GROWTH &
OPPORTUNITY**
IN EACH REGION

REGIONAL BASELINE MEASURES
REGION 3



GO Virginia Regional Boundaries



Source: US Census, VA PDC



12/5/2016



VIRGINIA INITIATIVE FOR
**GROWTH &
OPPORTUNITY**
IN EACH REGION

Region 3

Counties of:

- Amelia, Brunswick, Buckingham, Charlotte, Cumberland, Halifax, Henry, Lunenburg, Mecklenburg, Nottoway, Patrick, Pittsylvania, Prince Edward

Cities of:

- Danville, Martinsville



VIRGINIA INITIATIVE FOR
**GROWTH &
OPPORTUNITY**
IN EACH REGION

Data Included

- **Population**
 - Population Trends
- **Income and Wealth**
 - Per Capita Income
 - Percent of Population in Poverty
- **Employment**
 - Total Employment
 - Unemployment Rate
- **Industry**
 - Employment Trends by Industry Sector
 - Relative Concentration (Location Quotients) by Sector
 - Wages by Industry Sector



VIRGINIA INITIATIVE FOR
**GROWTH &
OPPORTUNITY**
IN EACH REGION

Data Included

- **Labor Force**
 - Labor Force Participation Rate
 - Commuting inflow/outflow
 - Educational Attainment
- **Firm Growth**
 - Jobs Created by Young Companies (5 years old or less)
 - Jobs Created by Small Companies (less than 20 employees)
 - Sole Proprietorships



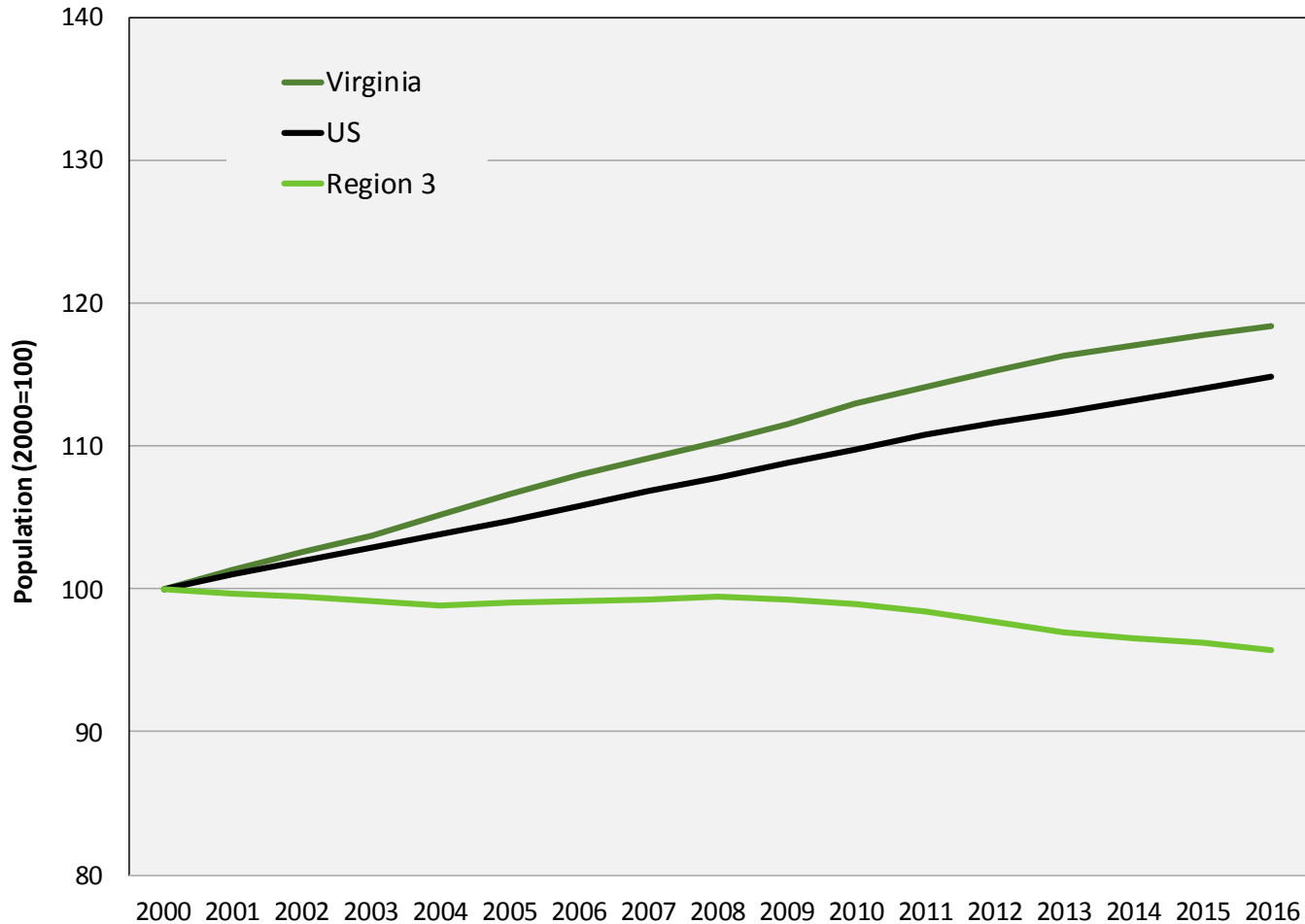
VIRGINIA INITIATIVE FOR
**GROWTH &
OPPORTUNITY**
IN EACH REGION

Population



VIRGINIA INITIATIVE FOR
**GROWTH &
OPPORTUNITY**
IN EACH REGION

Population Trends



Source: US Census Bureau, Population Estimates Programs



Population Trends

Population Trends: Region 3

	2000	2010	2016	Annual Growth (00-10)	Annual Growth (10-16)
United States	281,424,600	308,745,538	323,127,513	0.9%	0.8%
Virginia	7,105,817	8,025,773	8,411,808	1.2%	0.8%
Region 3	387,778	383,660	371,277	-0.1%	-0.5%
Amelia	11,446	12,742	12,913	1.1%	0.2%
Brunswick	18,387	17,406	16,243	-0.5%	-1.1%
Buckingham	15,634	17,109	17,048	0.9%	-0.1%
Charlotte	12,476	12,564	12,129	0.1%	-0.6%
Cumberland	8,987	10,029	9,652	1.1%	-0.6%
Halifax	37,299	36,155	34,992	-0.3%	-0.5%
Henry	57,903	54,157	51,445	-0.7%	-0.9%
Lunenburg	13,093	12,905	12,273	-0.1%	-0.8%
Mecklenburg	32,384	32,695	30,892	0.1%	-0.9%
Nottoway	15,773	15,834	15,595	0.0%	-0.3%
Patrick	19,418	18,479	17,923	-0.5%	-0.5%
Pittsylvania	61,835	63,600	61,687	0.3%	-0.5%
Prince Edward	19,708	23,351	23,142	1.7%	-0.1%
Danville city	48,104	42,915	41,898	-1.1%	-0.4%
Martinsville city	15,331	13,719	13,445	-1.1%	-0.3%

Source: US Census Bureau, Population Estimates Programs



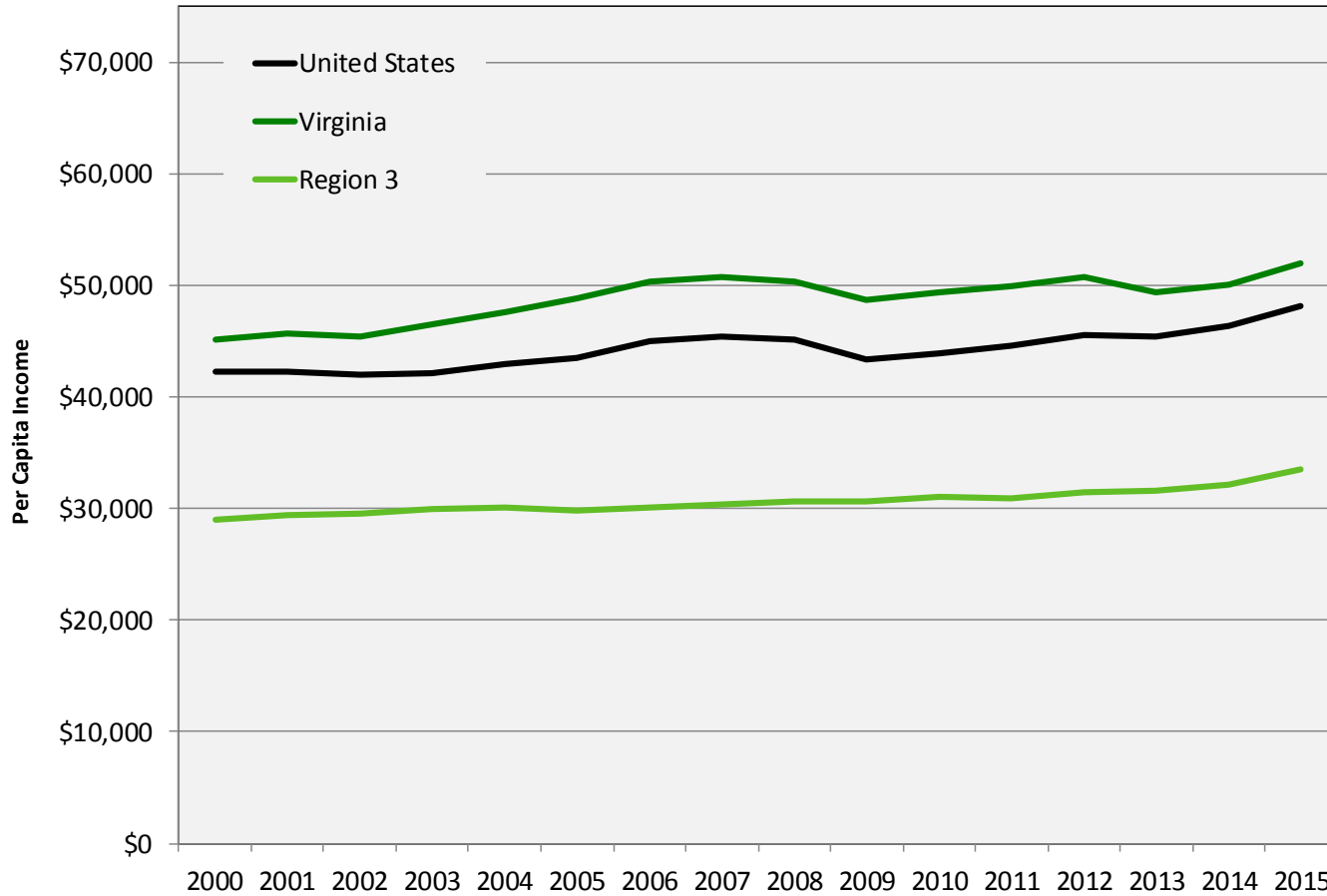
VIRGINIA INITIATIVE FOR
**GROWTH &
OPPORTUNITY**
IN EACH REGION

Income and Wealth



VIRGINIA INITIATIVE FOR
**GROWTH &
OPPORTUNITY**
IN EACH REGION

Per Capita Income



Source: US Bureau of Economic Analysis, PCI adjusted for 2015 dollars



Per Capita Income

Per Capita Income: Region 3

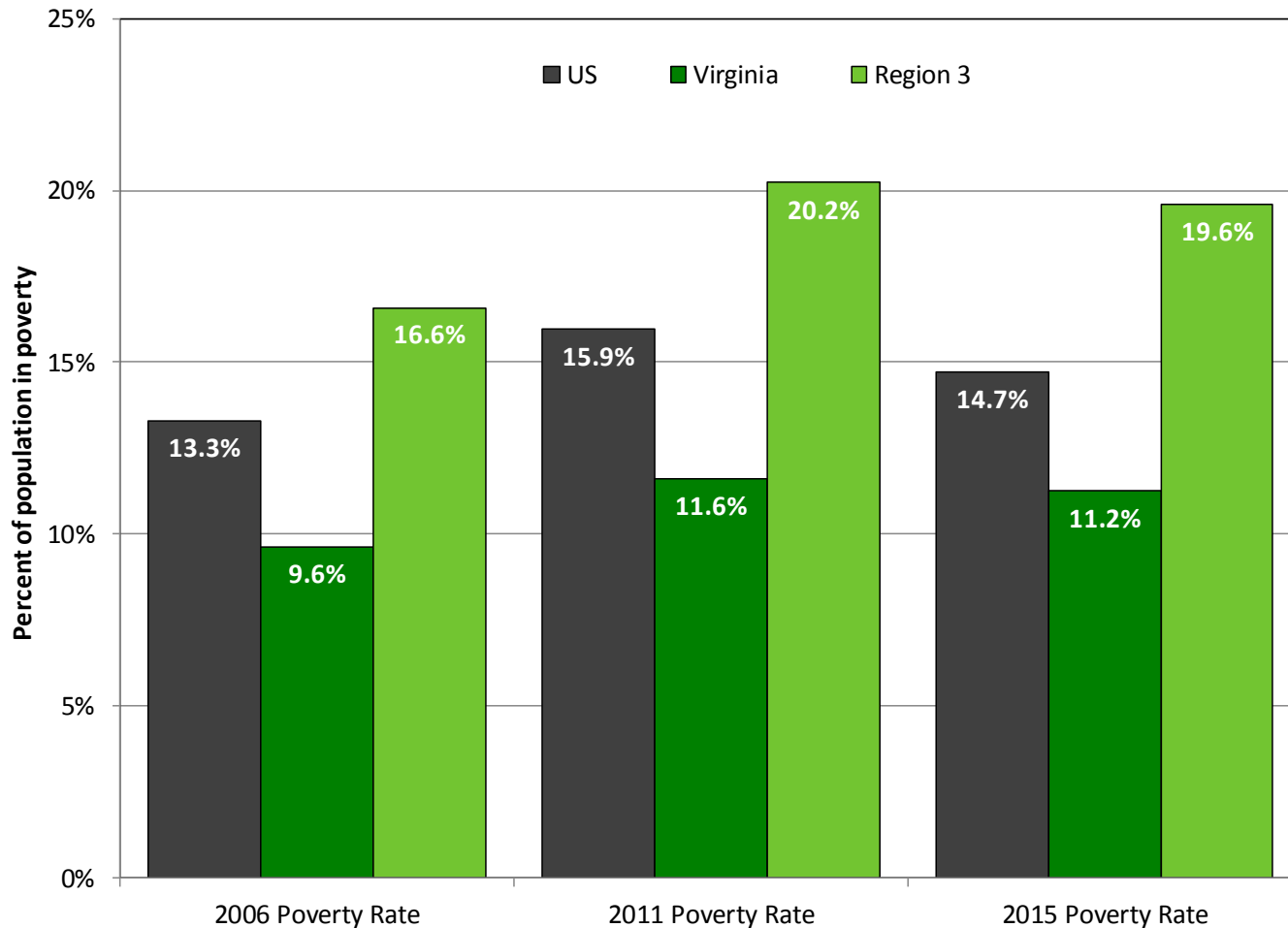
	2000	2010	2015	Annual Growth (00-10)	Annual Growth (10-15)
United States	\$42,231	\$43,902	\$48,112	0.4%	1.5%
Virginia	\$45,144	\$49,421	\$52,052	0.9%	0.9%
Region 3	\$29,000	\$30,990	\$33,480	0.7%	1.3%
Amelia	\$33,191	\$37,162	\$40,511	1.1%	1.4%
Brunswick	\$25,447	\$29,178	\$31,332	1.4%	1.2%
Buckingham	\$23,791	\$25,928	\$27,449	0.9%	1.0%
Charlotte	\$27,968	\$29,446	\$32,048	0.5%	1.4%
Cumberland	\$29,071	\$30,349	\$34,599	0.4%	2.2%
Halifax	\$28,018	\$31,891	\$33,960	1.3%	1.1%
Henry + Martinsville, VA*	\$30,718	\$32,921	\$34,968	0.7%	1.0%
Lunenburg	\$25,761	\$27,856	\$30,733	0.8%	1.7%
Mecklenburg	\$29,404	\$31,495	\$34,137	0.7%	1.4%
Nottoway	\$29,942	\$32,631	\$35,630	0.9%	1.5%
Patrick	\$25,942	\$28,701	\$30,794	1.0%	1.2%
Pittsylvania + Danville, VA*	\$30,744	\$31,423	\$34,119	0.2%	1.4%
Prince Edward	\$24,116	\$26,526	\$29,186	1.0%	1.6%

Source: US Bureau of Economic Analysis, PCI adjusted for 2015 dollars



VIRGINIA INITIATIVE FOR
**GROWTH &
OPPORTUNITY**
IN EACH REGION

Percent of Population in Poverty



Source: US Census Bureau, Small Area Income and Poverty Estimates



Percent of Population in Poverty

Poverty Trends: Region 3

	2006 Poverty Rate	2011 Poverty Rate	2015 Poverty Rate
United States	13.3%	15.9%	14.7%
Virginia	9.6%	11.6%	11.2%
Region 3	16.6%	20.2%	19.6%
Amelia	9.2%	11.9%	11.1%
Brunswick	19.0%	25.6%	22.1%
Buckingham	17.6%	21.3%	20.2%
Charlotte	17.3%	20.9%	19.2%
Cumberland	15.0%	17.9%	19.6%
Halifax	18.4%	19.3%	16.9%
Henry	14.4%	20.5%	19.6%
Lunenburg	19.8%	22.6%	21.1%
Mecklenburg	14.8%	19.0%	20.4%
Nottoway	19.3%	22.1%	23.7%
Patrick	14.1%	18.0%	17.0%
Pittsylvania	13.0%	14.7%	17.1%
Prince Edward	19.6%	25.0%	22.3%
Danville city	22.3%	26.5%	23.5%
Martinsville city	20.2%	24.5%	23.7%

Source: US Census Bureau, Small Area Income and Poverty Estimates



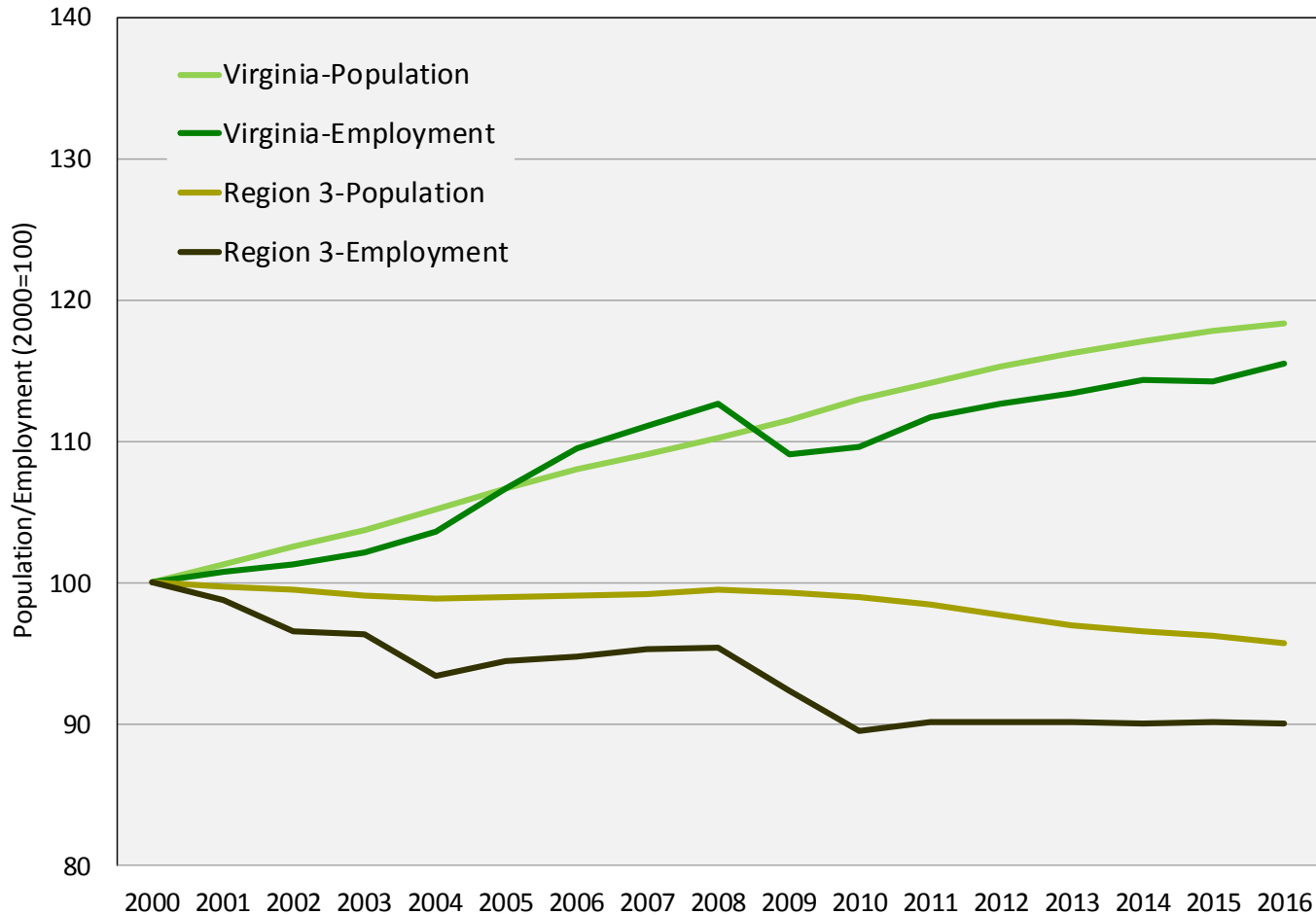
VIRGINIA INITIATIVE FOR
**GROWTH &
OPPORTUNITY**
IN EACH REGION

Employment



VIRGINIA INITIATIVE FOR
**GROWTH &
OPPORTUNITY**
IN EACH REGION

Total Employment



Source: US Census Bureau Population Estimates, US Bureau of Labor Statistics Local Area Unemployment Statistics (2016 preliminary)



Total Employment

Employment Trends: Region 3

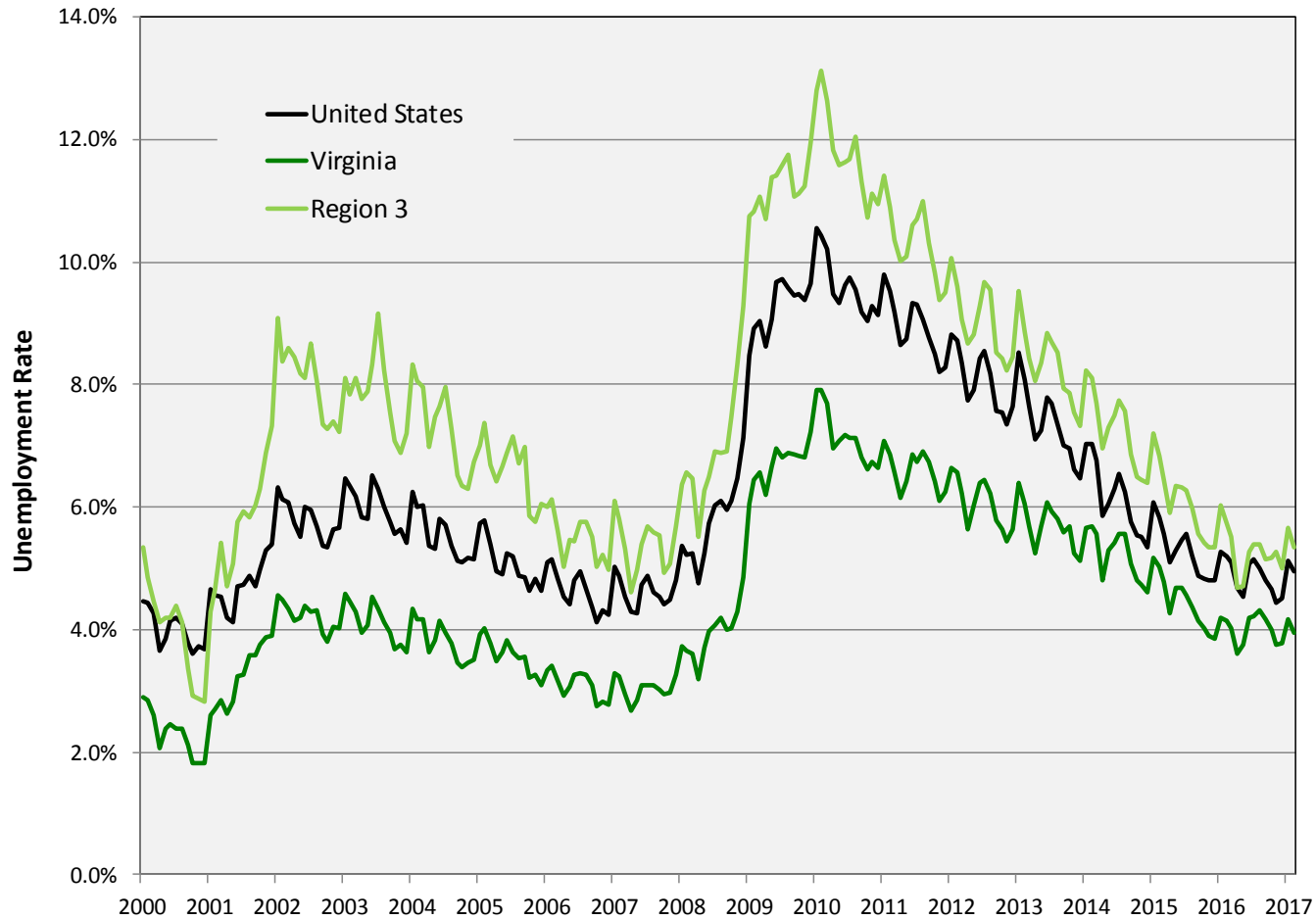
	2000	2010	2016	Annual Growth (00-10)	Annual Growth (10-16)
United States	136,891,000	139,064,000	151,436,000	0.2%	1.4%
Virginia	3,522,865	3,860,386	4,070,260	0.9%	0.9%
Region 3	170,177	152,273	153,265	-1.1%	0.1%
Amelia	5,748	5,699	6,049	-0.1%	1.0%
Brunswick	6,609	6,168	5,813	-0.7%	-1.0%
Buckingham	5,947	5,868	6,068	-0.1%	0.6%
Charlotte	5,343	4,820	4,926	-1.0%	0.4%
Cumberland	4,142	4,141	4,357	0.0%	0.8%
Halifax	15,392	14,651	13,939	-0.5%	-0.8%
Henry	27,447	20,467	20,725	-2.9%	0.2%
Lunenburg	5,187	5,020	5,038	-0.3%	0.1%
Mecklenburg	13,765	12,552	11,773	-0.9%	-1.1%
Nottoway	5,991	6,338	6,809	0.6%	1.2%
Patrick	9,193	7,266	7,463	-2.3%	0.4%
Pittsylvania	30,895	27,543	28,496	-1.1%	0.6%
Prince Edward	7,859	9,284	9,230	1.7%	-0.1%
Danville city	20,448	17,390	17,784	-1.6%	0.4%
Martinsville city	6,211	5,066	4,798	-2.0%	-0.9%

Source: US BLS Local Area Unemployment Statistics (2016 preliminary)



VIRGINIA INITIATIVE FOR
**GROWTH &
OPPORTUNITY**
IN EACH REGION

Unemployment Rate



Source: US Bureau of Labor Statistics, Local Area Unemployment Statistics



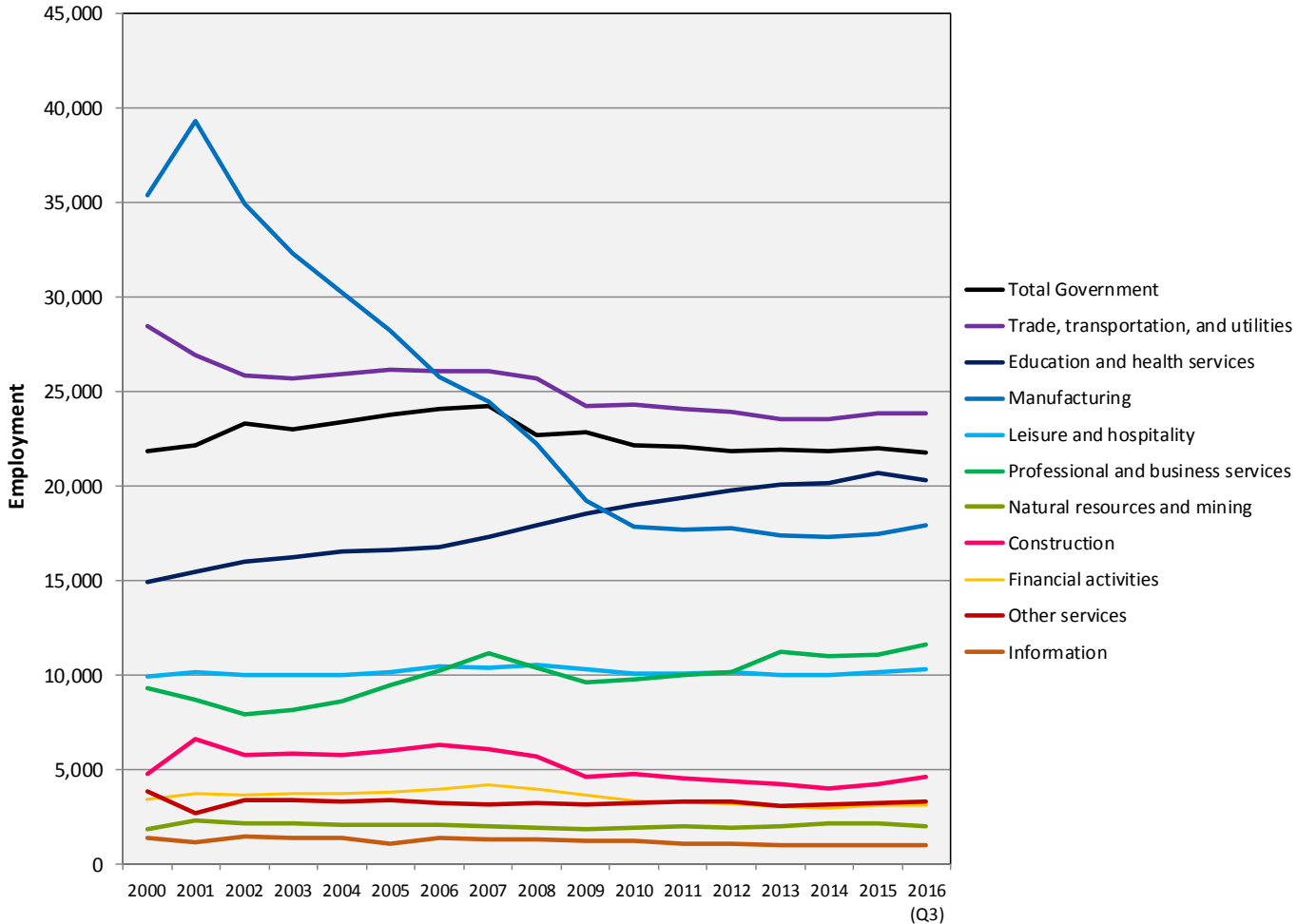
VIRGINIA INITIATIVE FOR
**GROWTH &
OPPORTUNITY**
IN EACH REGION

Industry



VIRGINIA INITIATIVE FOR
**GROWTH &
 OPPORTUNITY**
 IN EACH REGION

Employment Trends by Industry Sector



Source: US Bureau of Labor Statistics, Quarterly Census of Employment and Wages



Employment Trends by Industry Sector

Region 3: Industry Sectors, 2015*

Sector	Employment#	LQ	Region 3 Avg Wage	US Avg Wage
Trade, transportation, and utilities	23,852	1.01	\$30,438	\$44,321
Education and health services	20,730	1.11	\$34,115	\$47,383
Manufacturing	17,450	1.61	\$44,021	\$64,305
Local government	14,370	1.17	\$31,557	\$47,573
Professional and business services	11,063	0.64	\$30,117	\$69,270
Leisure and hospitality	10,170	0.76	\$14,106	\$21,807
State government	6,510	1.61	\$38,428	\$55,878
Construction	4,268	0.75	\$36,337	\$57,009
Other services	3,220	0.85	\$23,628	\$35,116
Financial activities	3,106	0.45	\$38,377	\$87,915
Natural resources and mining	2,126	1.20	\$36,667	\$58,461
Federal government	1,144	0.47	\$54,321	\$77,900
Information	1,008	0.41	\$41,374	\$95,098

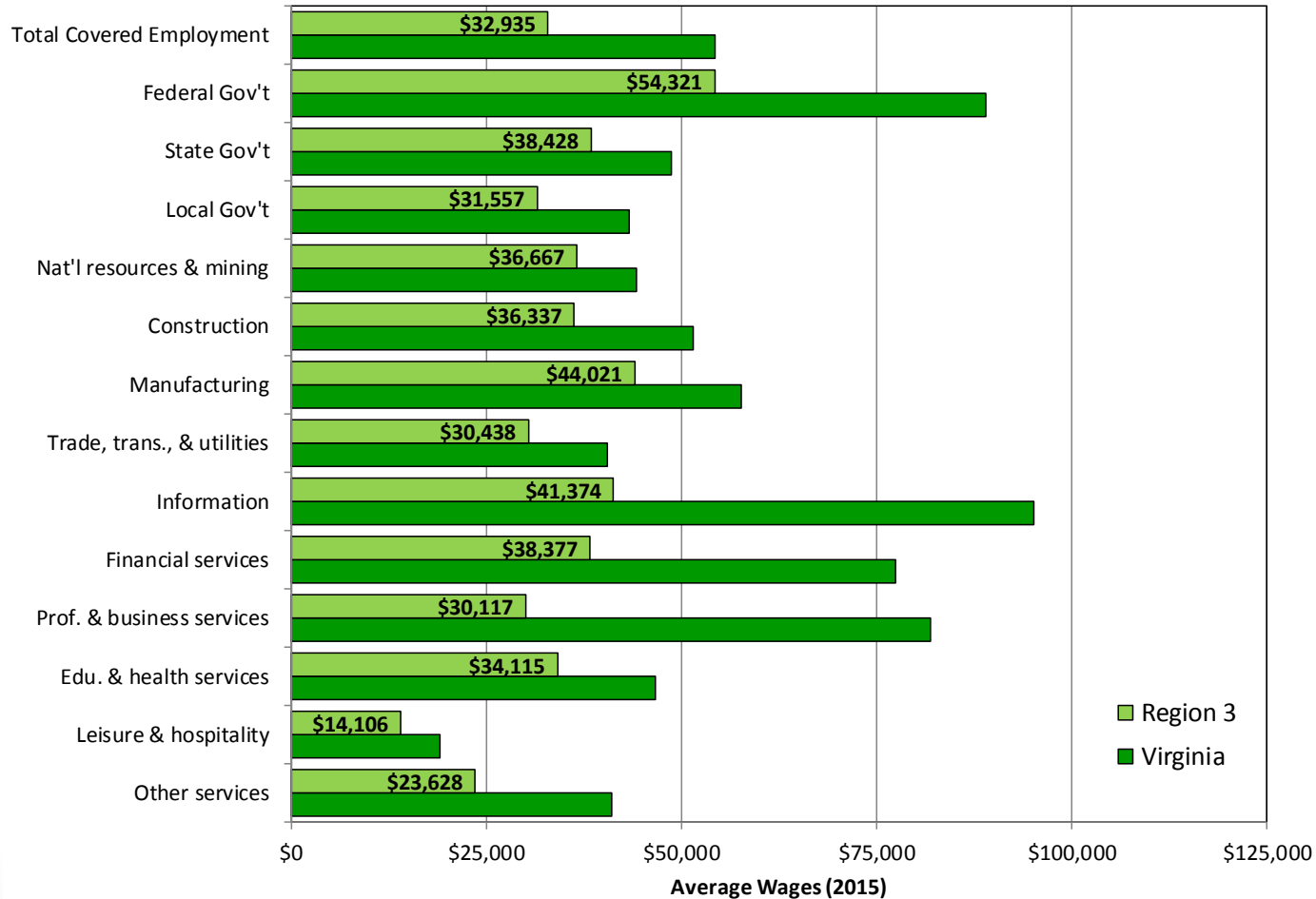
Source: US Bureau of Labor Statistics, Quarterly Census of Employment and Wages

*2015 is the most recently available complete year

#Does not include suppressed employment



Industry Wages by Sector



Source: US Bureau of Labor Statistics, Quarterly Census of Employment and Wages



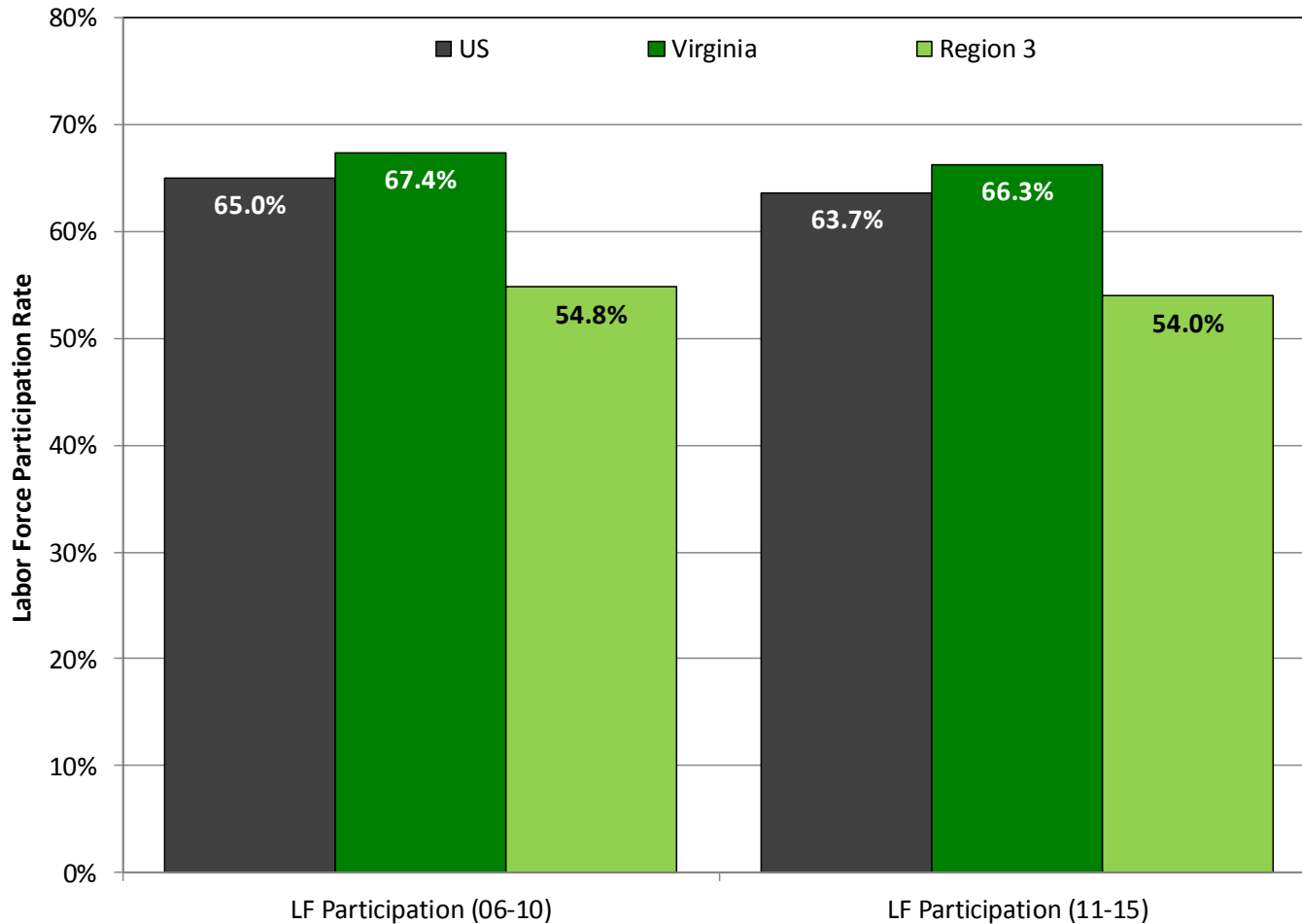
VIRGINIA INITIATIVE FOR
**GROWTH &
OPPORTUNITY**
IN EACH REGION

Labor Force



VIRGINIA INITIATIVE FOR
**GROWTH &
OPPORTUNITY**
IN EACH REGION

Labor Force Participation Rate



Source: US Census Bureau, 2006-2010 and 2011-2015 American Community Surveys



Labor Force Participation Rate

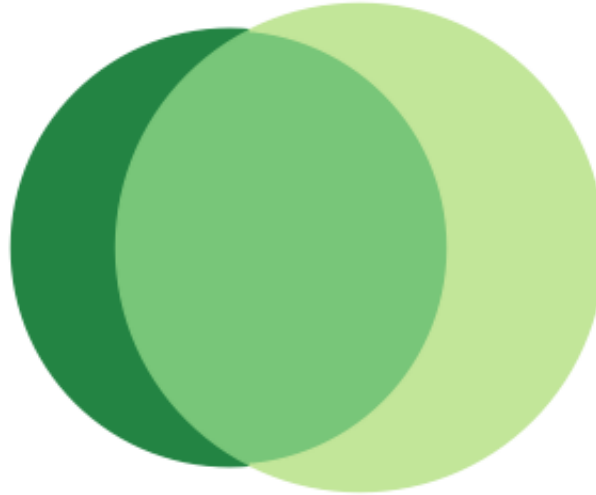
Labor Force Participation Rate: Region 3

	LF Participation (06-10)	LF Participation (11-15)
United States	65.0%	63.7%
Virginia	67.4%	66.3%
Region 3	54.8%	54.0%
Amelia	61.3%	58.0%
Brunswick	45.8%	51.4%
Buckingham	27.7%	51.5%
Charlotte	55.7%	55.5%
Cumberland	58.3%	63.0%
Halifax	54.9%	53.4%
Henry	57.3%	55.6%
Lunenburg	51.2%	47.3%
Mecklenburg	52.7%	51.1%
Nottoway	57.3%	49.6%
Patrick	55.1%	49.1%
Pittsylvania	60.0%	58.4%
Prince Edward	54.8%	47.7%
Danville city	57.5%	56.0%
Martinsville city	56.1%	53.4%

Source: US Census Bureau, 2006-2010 and 2011-2015 American Community Surveys²

Commuting (Inflow/Outflow)

Inflow/Outflow Job Counts in 2014



31,503	- Employed in Selection Area, Live Outside
59,237	- Live in Selection Area, Employed Outside
82,086	- Employed and Live in Selection Area

Inflow/Outflow Job Counts (Primary Jobs): Region 3

	2014	
	Count	Share
Employed in the Selection Area	113,589	100.00%
Employed in the Selection Area but Living Outside	31,503	27.70%
Employed and Living in the Selection Area	82,086	72.30%
Living in the Selection Area	141,323	100.00%
Living in the Selection Area but Employed Outside	59,237	41.90%
Living and Employed in the Selection Area	82,086	58.10%

Source: US Census Bureau, Longitudinal Employer-Household Dynamics OnTheMap, 2014



Commuting (Inflow/Outflow)

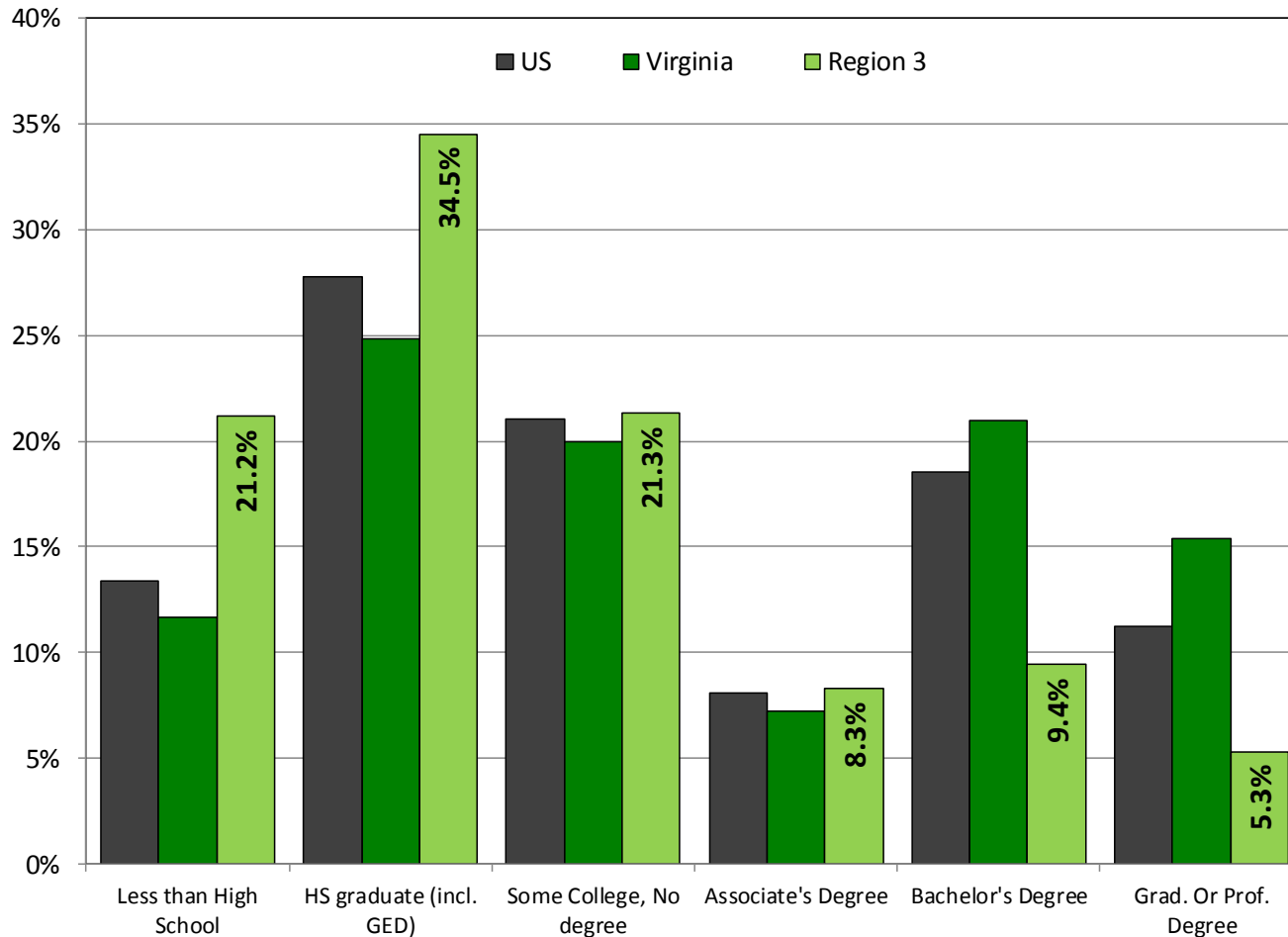
Commuting Patterns: Region 3

	Employed in Selection Area	Employed in the Selection Area but Living Outside		Employed and Living in the Selection Area		Living in the Selection Area	Living in the Selection Area but Employed Outside		Living and Employed in the Selection Area	
Virginia	3,313,939	286,033	8.6%	3,027,906	91.4%	3,377,666	349,760	10.4%	3,027,906	89.6%
Region 3	113,589	31,503	27.7%	82,086	72.3%	141,323	59,237	41.9%	82,086	58.1%
Amelia	2,091	1,179	56.4%	912	43.6%	5,403	4,491	83.1%	912	16.9%
Brunswick	3,663	2,142	58.5%	1,521	41.5%	6,240	4,719	75.6%	1,521	24.4%
Buckingham	6,989	3,702	53.0%	3,287	47.0%	7,525	4,238	56.3%	3,287	43.7%
Charlotte	2,583	1,480	57.3%	1,103	42.7%	4,604	3,501	76.0%	1,103	24.0%
Cumberland	1,196	701	58.6%	495	41.4%	3,965	3,470	87.5%	495	12.5%
Halifax	11,299	4,678	41.4%	6,621	58.6%	13,927	7,306	52.5%	6,621	47.5%
Henry	14,827	7,735	52.2%	7,092	47.8%	19,073	11,981	62.8%	7,092	37.2%
Lunenburg	2,087	1,152	55.2%	935	44.8%	4,545	3,610	79.4%	935	20.6%
Mecklenburg	10,365	5,377	51.9%	4,988	48.1%	11,827	6,839	57.8%	4,988	42.2%
Nottoway	5,083	3,238	63.7%	1,845	36.3%	5,742	3,897	67.9%	1,845	32.1%
Patrick	4,666	2,053	44.0%	2,613	56.0%	6,690	4,077	60.9%	2,613	39.1%
Pittsylvania	11,106	4,971	44.8%	6,135	55.2%	24,255	18,120	74.7%	6,135	25.3%
Prince Edward	7,887	5,067	64.2%	2,820	35.8%	8,022	5,202	64.8%	2,820	35.2%
Danville city	25,396	17,226	67.8%	8,170	32.2%	15,505	7,335	47.3%	8,170	52.7%
Martinsville city	8,335	7,041	84.5%	1,294	15.5%	4,985	3,691	74.0%	1,294	26.0%

Source: US Census Bureau, Longitudinal Employer-Household Dynamics OnTheMap, 2014



Educational Attainment



Source: US Census Bureau, 2011-2015 American Community Survey



Educational Attainment

Educational Attainment: Region 3

	2006-2010						2011-2015					
	Less than High School	HS graduate (incl. GED)	Some College, No degree	Associate's Degree	Bachelor's Degree	Grad. Or Prof. Degree	Less than High School	HS graduate (incl. GED)	Some College, No degree	Associate's Degree	Bachelor's Degree	Grad. Or Prof. Degree
United States	14.9%	29.0%	20.6%	7.5%	17.6%	10.3%	13.3%	27.8%	21.1%	8.1%	18.5%	11.2%
Virginia	13.9%	26.0%	19.6%	6.7%	19.9%	13.9%	11.7%	24.8%	19.9%	7.3%	21.0%	15.4%
Region 3	26.3%	35.0%	18.4%	7.2%	8.6%	4.7%	21.2%	34.5%	21.3%	8.3%	9.4%	5.3%
Amelia	22.0%	40.0%	19.8%	5.2%	8.7%	4.4%	20.3%	34.1%	24.1%	7.0%	11.4%	3.1%
Brunswick	32.7%	32.3%	16.1%	7.0%	8.4%	3.5%	24.1%	35.7%	19.6%	7.6%	7.5%	5.6%
Buckingham	38.4%	35.6%	9.9%	3.6%	9.3%	3.1%	22.8%	43.5%	17.7%	5.6%	7.6%	2.8%
Charlotte	28.4%	30.1%	20.3%	6.2%	10.3%	4.7%	22.0%	37.6%	18.8%	7.6%	9.2%	4.8%
Cumberland	27.5%	36.5%	17.6%	5.9%	8.3%	4.1%	22.5%	36.5%	18.8%	7.7%	10.0%	4.5%
Halifax	27.1%	34.5%	17.7%	7.6%	7.2%	6.0%	20.2%	36.5%	20.3%	7.5%	10.1%	5.3%
Henry	27.8%	33.5%	19.0%	8.9%	7.1%	3.8%	21.6%	34.1%	22.4%	10.5%	7.3%	4.1%
Lunenburg	28.5%	38.8%	16.6%	6.1%	7.0%	3.0%	25.6%	34.9%	21.4%	5.9%	8.1%	4.1%
Mecklenburg	24.8%	36.7%	19.0%	6.1%	8.6%	4.8%	21.2%	32.5%	22.7%	8.0%	9.8%	5.8%
Nottoway	27.2%	37.9%	16.7%	6.7%	5.8%	5.8%	22.3%	37.1%	19.5%	5.9%	10.5%	4.7%
Patrick	25.9%	36.8%	18.6%	9.2%	7.3%	2.3%	21.3%	36.0%	21.2%	8.9%	8.0%	4.7%
Pittsylvania	24.0%	35.9%	19.8%	7.5%	8.8%	4.0%	19.3%	35.3%	22.3%	8.9%	9.4%	4.8%
Prince Edward	18.9%	43.3%	15.5%	3.9%	10.9%	7.6%	18.0%	34.6%	17.9%	5.2%	12.4%	12.0%
Danville city	24.1%	29.9%	21.1%	8.7%	10.0%	6.1%	21.3%	28.1%	22.8%	10.0%	11.3%	6.5%
Martinsville city	21.7%	30.4%	20.1%	7.4%	13.6%	6.8%	21.9%	29.7%	21.8%	8.8%	10.0%	7.7%

Source: US Census Bureau, 2006-2010 and 2011-2015 American Community Surveys



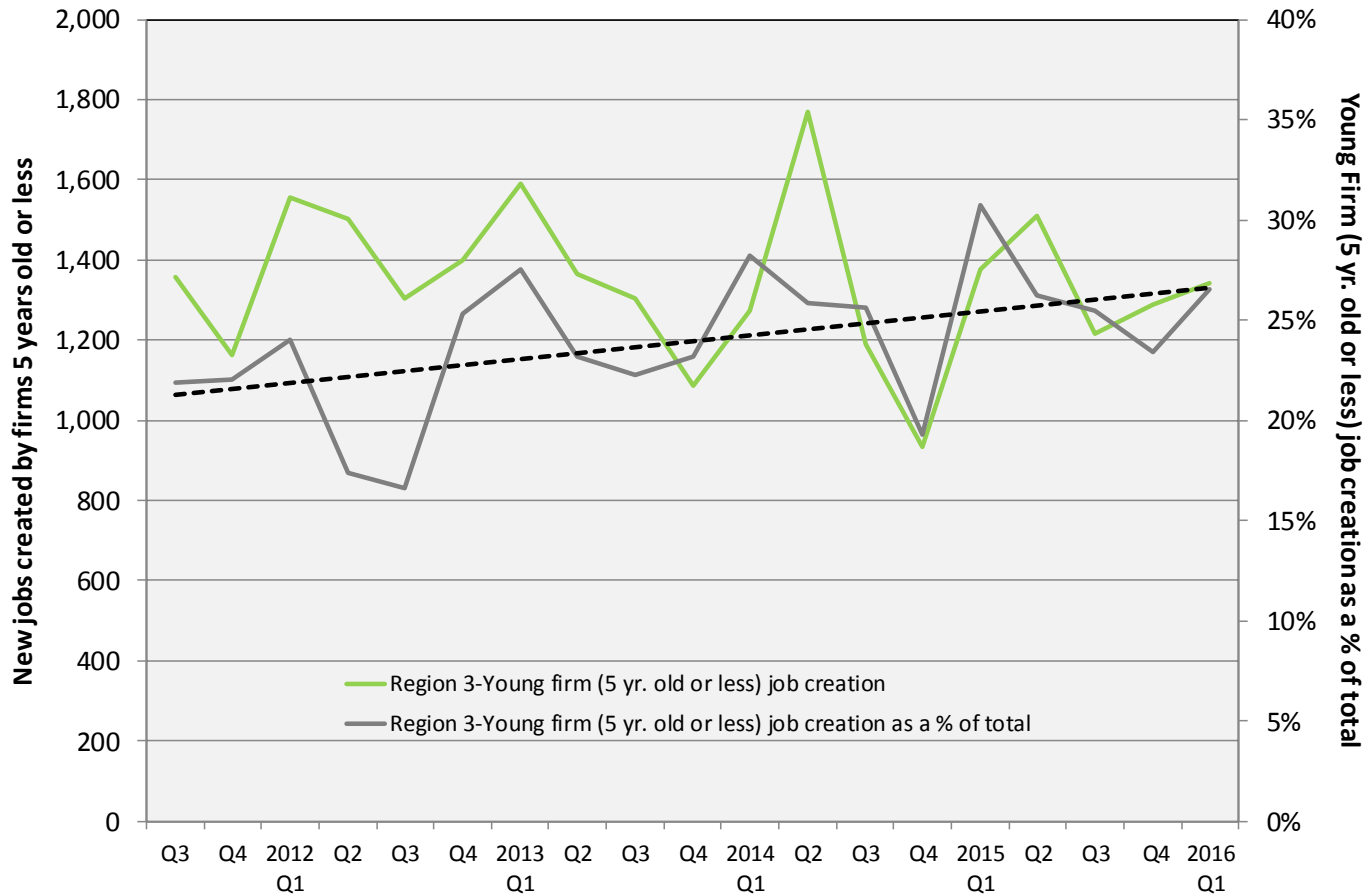
VIRGINIA INITIATIVE FOR
**GROWTH &
OPPORTUNITY**
IN EACH REGION

Firm Growth



VIRGINIA INITIATIVE FOR
**GROWTH &
 OPPORTUNITY**
 IN EACH REGION

Jobs Created by Young Companies (5 years old or less)



Source: US Census Bureau, Longitudinal Employer-Household Dynamics, Quarterly Workforce Indicators



Jobs Created by Young Companies

(5 years old or less)

Region 3: Young firm (5 yrs old or less) job creation

	2012 Average	2015 Average	2012 as a % of Total	2015 as a % of Total
US	1,542,135	1,674,953	25.2%	26.7%
Virginia	42,118	39,288	19.4%	26.2%
Region 3	1,440	1,348	20.2%	26.3%
Amelia	34	39	22.4%	33.8%
Brunswick	51	52	29.0%	35.2%
Buckingham	45	51	28.3%	39.0%
Charlotte	38	50	25.6%	37.0%
Cumberland	21	17	30.0%	30.1%
Halifax	93	133	11.1%	31.7%
Henry	179	147	20.2%	18.3%
Lunenburg	28	37	22.9%	43.2%
Mecklenburg	159	104	25.2%	20.7%
Nottoway	57	66	30.3%	30.8%
Patrick	54	42	25.7%	15.4%
Pittsylvania	195	183	28.9%	37.4%
Prince Edward	95	65	14.5%	24.0%
Danville city	258	230	17.4%	20.4%
Martinsville city	135	134	18.0%	36.5%

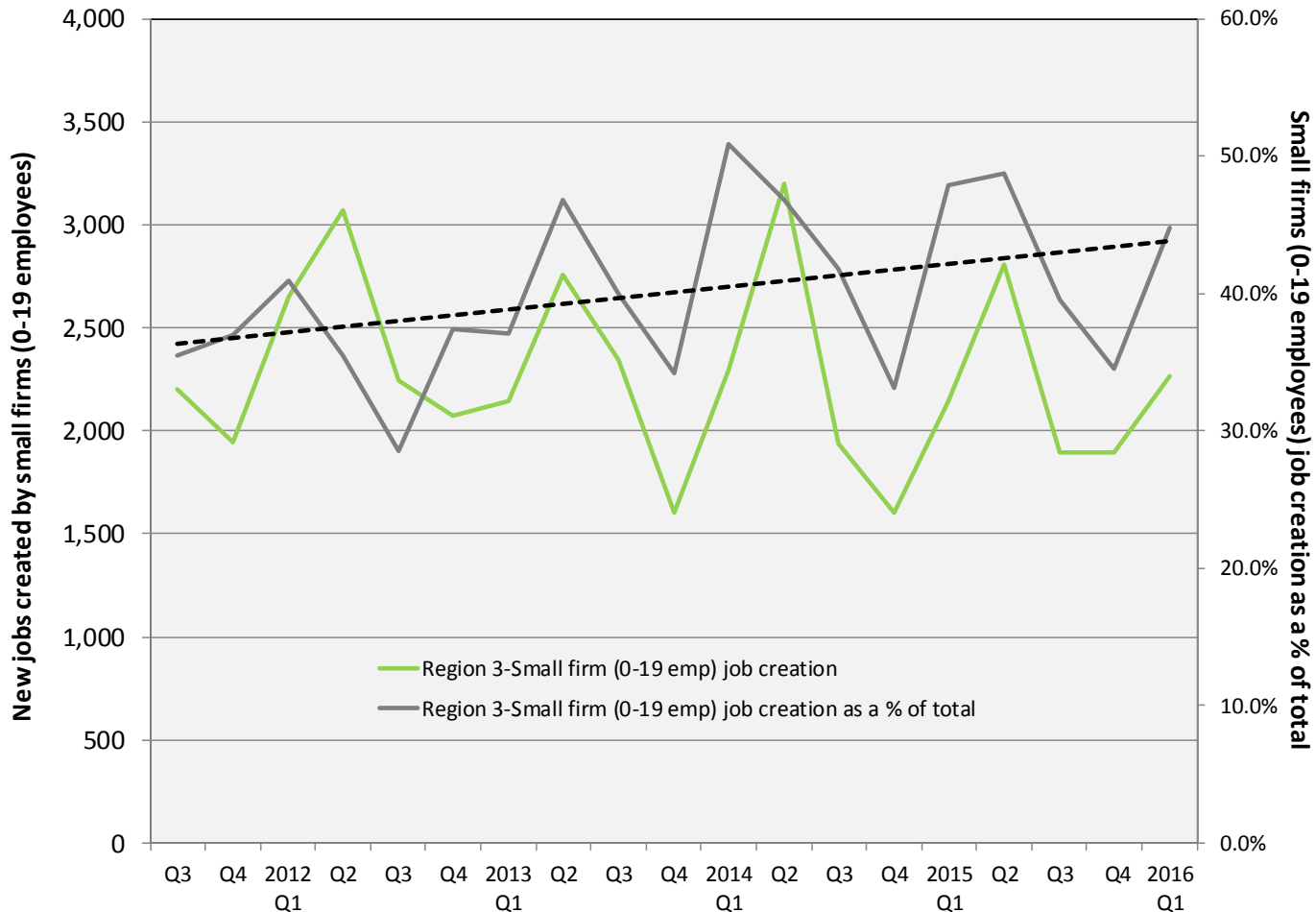
Source: US Census Bureau, LEHD, QWI



VIRGINIA INITIATIVE FOR
**GROWTH &
 OPPORTUNITY**
 IN EACH REGION

Jobs Created by Small Companies

(less than 20 employees)



Source: US Census Bureau, Longitudinal Employer-Household Dynamics, Quarterly Workforce Indicators



Jobs Created by Small Companies

(less than 20 employees)

Region 3: Small firm (0-19 Emp.) job creation

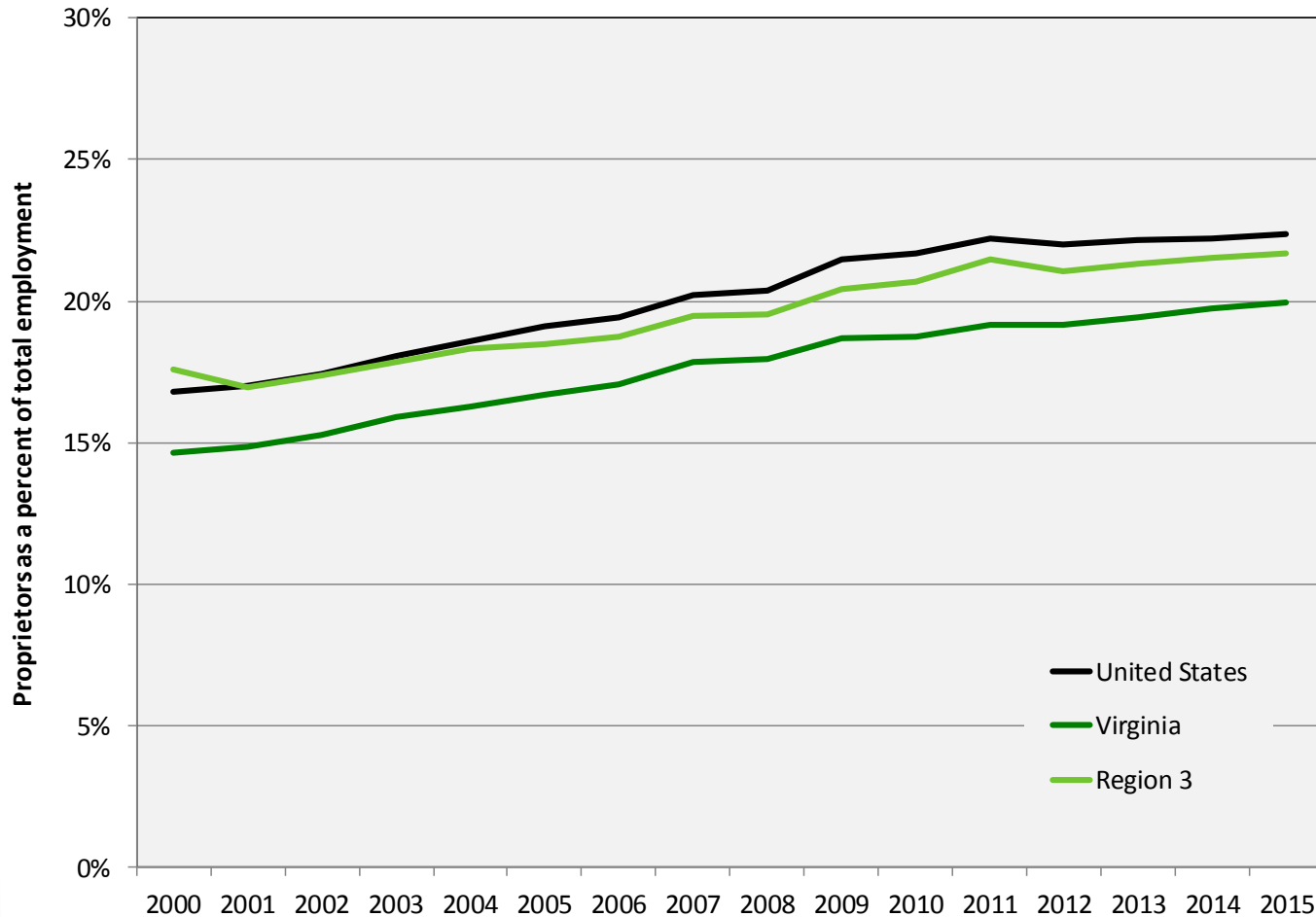
	2012 Average	2015 Average	2012 as a % of Total	2015 as a % of Total
US	2,203,129	2,268,500	36.0%	36.2%
Virginia	58,797	54,683	27.1%	36.4%
Region 3	2,509	2,186	35.2%	42.6%
Amelia	85	87	56.8%	75.5%
Brunswick	94	88	52.8%	59.3%
Buckingham	74	80	47.1%	60.8%
Charlotte	77	75	51.7%	55.4%
Cumberland	46	44	66.4%	77.4%
Halifax	206	209	24.8%	50.1%
Henry	287	252	32.4%	31.5%
Lunenburg	68	65	55.8%	75.7%
Mecklenburg	266	203	42.1%	40.3%
Nottoway	112	105	59.6%	49.4%
Patrick	133	98	62.9%	36.1%
Pittsylvania	342	266	50.7%	54.6%
Prince Edward	145	111	22.2%	41.1%
Danville city	403	335	27.2%	29.6%
Martinsville city	172	169	23.0%	46.1%

Source: US Census Bureau, LEHD, QWI



VIRGINIA INITIATIVE FOR
**GROWTH &
OPPORTUNITY**
IN EACH REGION

Sole Proprietorships as a percent of total employment



Source: US Bureau of Economic Analysis



Sole Proprietorships

Proprietors as a percent of total employment: Region 3

	2000 Proprietors	2010 Proprietors	2015 Proprietors	Annual Growth (00-10)	Annual Growth (10-15)	Proprietors as a % of total employment
United States	27,760,800	37,508,700	42,561,400	3.1%	2.1%	22.4%
Virginia	644,573	890,602	1,008,978	3.3%	2.1%	19.9%
Region 3	33,805	34,286	36,873	0.1%	1.2%	21.7%
Amelia	1,637	1,660	1,743	0.1%	0.8%	39.4%
Brunswick	1,230	1,222	1,365	-0.1%	1.9%	23.4%
Buckingham	2,339	1,403	1,389	-5.0%	-0.2%	28.0%
Charlotte	1,845	1,912	1,914	0.4%	0.0%	37.6%
Cumberland	854	751	889	-1.3%	2.9%	37.3%
Halifax	3,572	3,233	3,509	-1.0%	1.4%	21.0%
Henry + Martinsville, VA*	5,215	5,373	5,797	0.3%	1.3%	18.1%
Lunenburg	1,150	970	1,103	-1.7%	2.2%	27.7%
Mecklenburg	2,939	2,985	3,243	0.2%	1.4%	20.4%
Nottoway	1,462	1,494	1,476	0.2%	-0.2%	19.0%
Patrick	1,997	2,226	2,230	1.1%	0.0%	28.6%
Pittsylvania + Danville, VA*	8,041	8,866	9,913	1.0%	1.9%	19.3%
Prince Edward	1,524	2,191	2,302	3.7%	0.8%	19.3%

Source: US Bureau of Economic Analysis



VIRGINIA INITIATIVE FOR
**GROWTH &
OPPORTUNITY**
IN EACH REGION

Thank You

Terry L. Clower Ph.D. – tclower@gmu.edu

Mark C. White Ph.D. – mwhite@gmu.edu

Spencer A. Shanholtz – sshanhol@gmu.edu



cra.gmu.edu

[@GMU_CRA](#)