



VIRGINIA INITIATIVE FOR
**GROWTH &
OPPORTUNITY**
IN EACH REGION

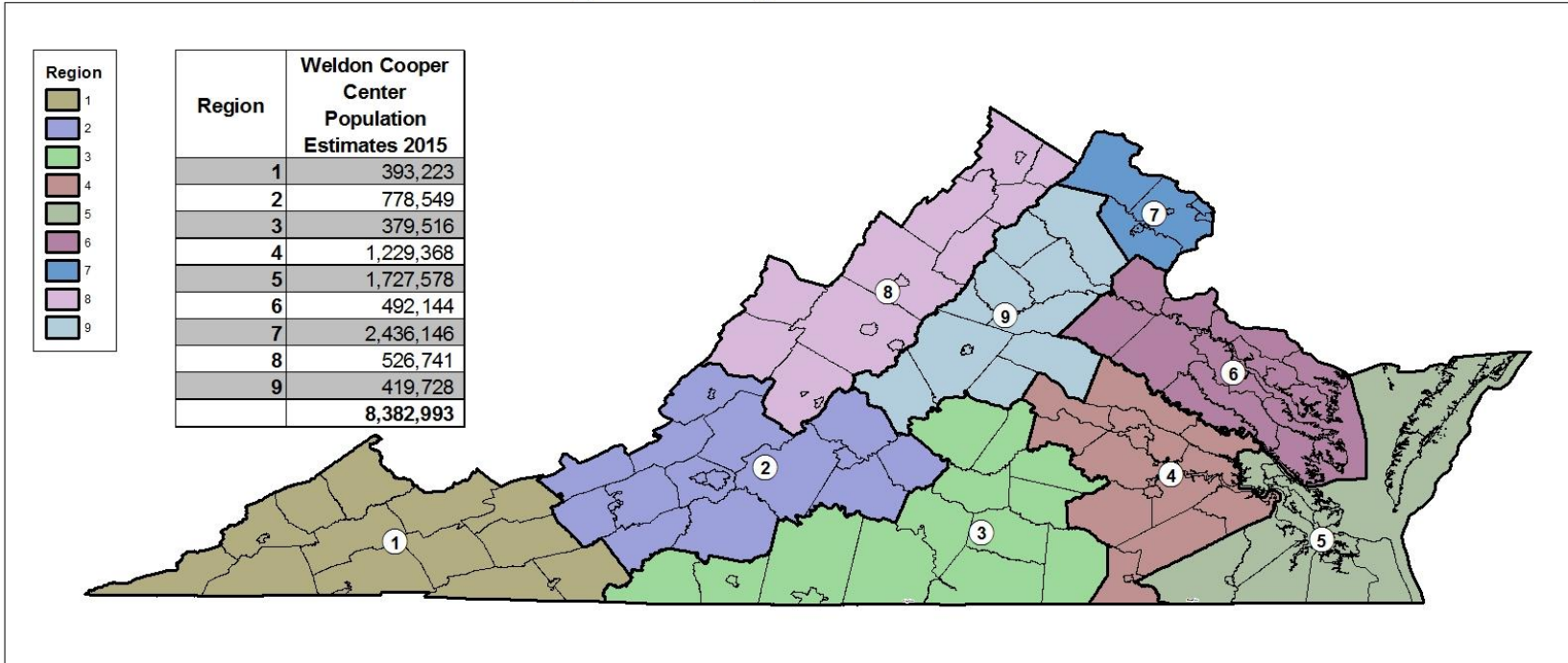
REGIONAL BASELINE MEASURES
REGION 7





VIRGINIA INITIATIVE FOR
**GROWTH &
OPPORTUNITY**
IN EACH REGION

GO Virginia Regional Boundaries



0 15 30 60 90 120 Miles

Source: US Census, VA PDC



12/5/2016



VIRGINIA INITIATIVE FOR
**GROWTH &
OPPORTUNITY**
IN EACH REGION

Region 7

Counties of:

- Arlington, Fairfax, Loudoun, Prince William

Cities of:

- Alexandria, Fairfax, Falls Church, Manassas, Manassas Park



VIRGINIA INITIATIVE FOR
**GROWTH &
OPPORTUNITY**
IN EACH REGION

Data Included

- **Population**
 - Population Trends
- **Income and Wealth**
 - Per Capita Income
 - Percent of Population in Poverty
- **Employment**
 - Total Employment
 - Unemployment Rate
- **Industry**
 - Employment Trends by Industry Sector
 - Relative Concentration (Location Quotients) by Sector
 - Wages by Industry Sector



VIRGINIA INITIATIVE FOR
**GROWTH &
OPPORTUNITY**
IN EACH REGION

Data Included

- **Labor Force**
 - Labor Force Participation Rate
 - Commuting inflow/outflow
 - Educational Attainment
- **Firm Growth**
 - Jobs Created by Young Companies (5 years old or less)
 - Jobs Created by Small Companies (less than 20 employees)
 - Sole Proprietorships



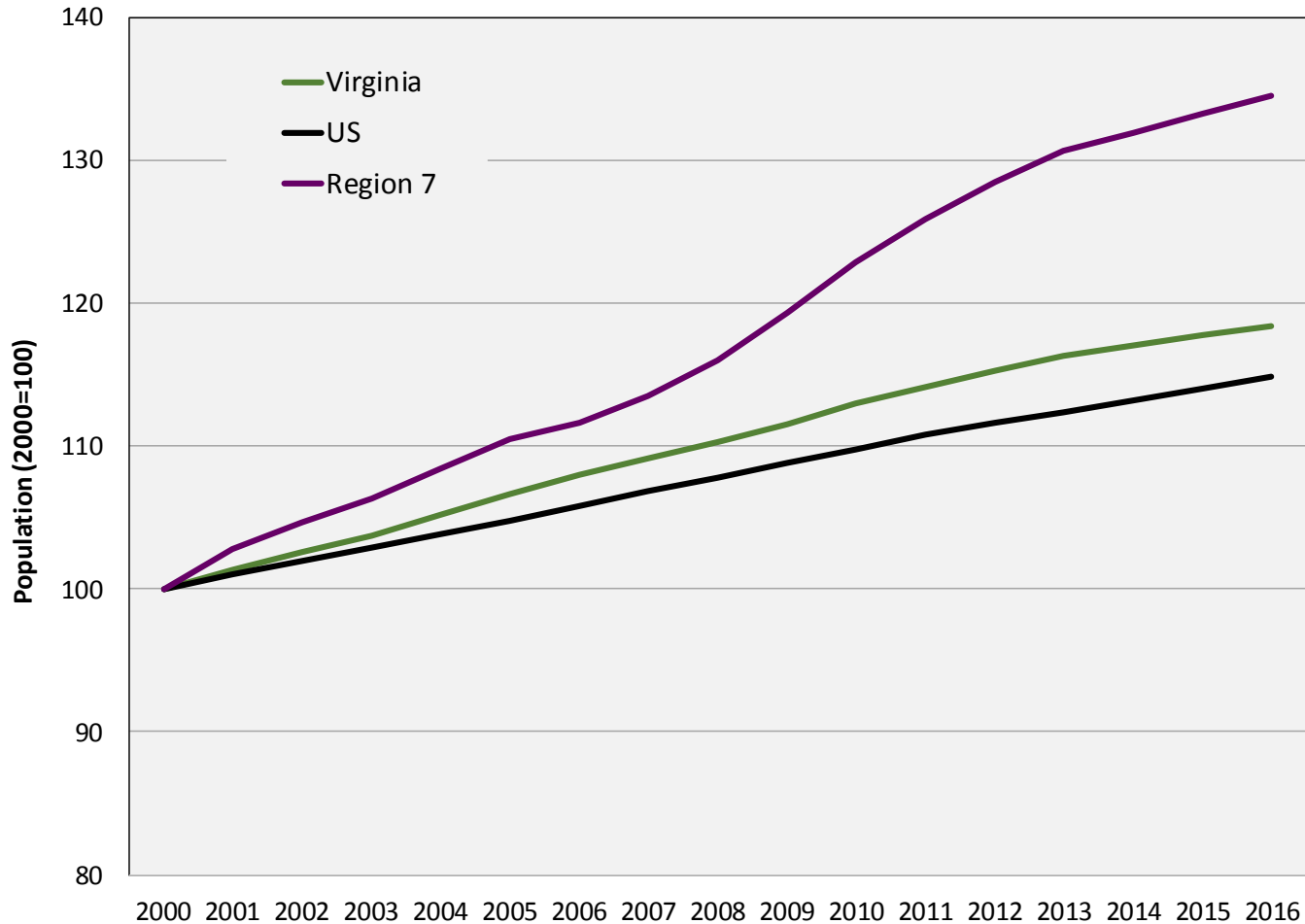
VIRGINIA INITIATIVE FOR
**GROWTH &
OPPORTUNITY**
IN EACH REGION

Population



VIRGINIA INITIATIVE FOR
**GROWTH &
OPPORTUNITY**
IN EACH REGION

Population Trends



Source: US Census Bureau, Population Estimates Programs



Population Trends

Population Trends: Region 7

	2000	2010	2016	Annual Growth (00-10)	Annual Growth (10-16)
United States	281,424,600	308,745,538	323,127,513	0.9%	0.8%
Virginia	7,105,817	8,025,773	8,411,808	1.2%	0.8%
Region 7	1,829,631	2,246,802	2,461,243	2.1%	1.5%
Arlington	189,198	209,449	230,050	1.0%	1.6%
Fairfax	975,476	1,086,767	1,138,652	1.1%	0.8%
Loudoun	173,907	315,585	385,945	6.1%	3.4%
Prince William	284,565	406,385	455,210	3.6%	1.9%
Alexandria city	129,225	140,874	155,810	0.9%	1.7%
Fairfax city	21,600	22,596	24,164	0.5%	1.1%
Falls Church city	10,441	12,441	14,014	1.8%	2.0%
Manassas city	34,914	38,266	41,483	0.9%	1.4%
Manassas Park city	10,305	14,439	15,915	3.4%	1.6%

Source: US Census Bureau, Population Estimates Programs



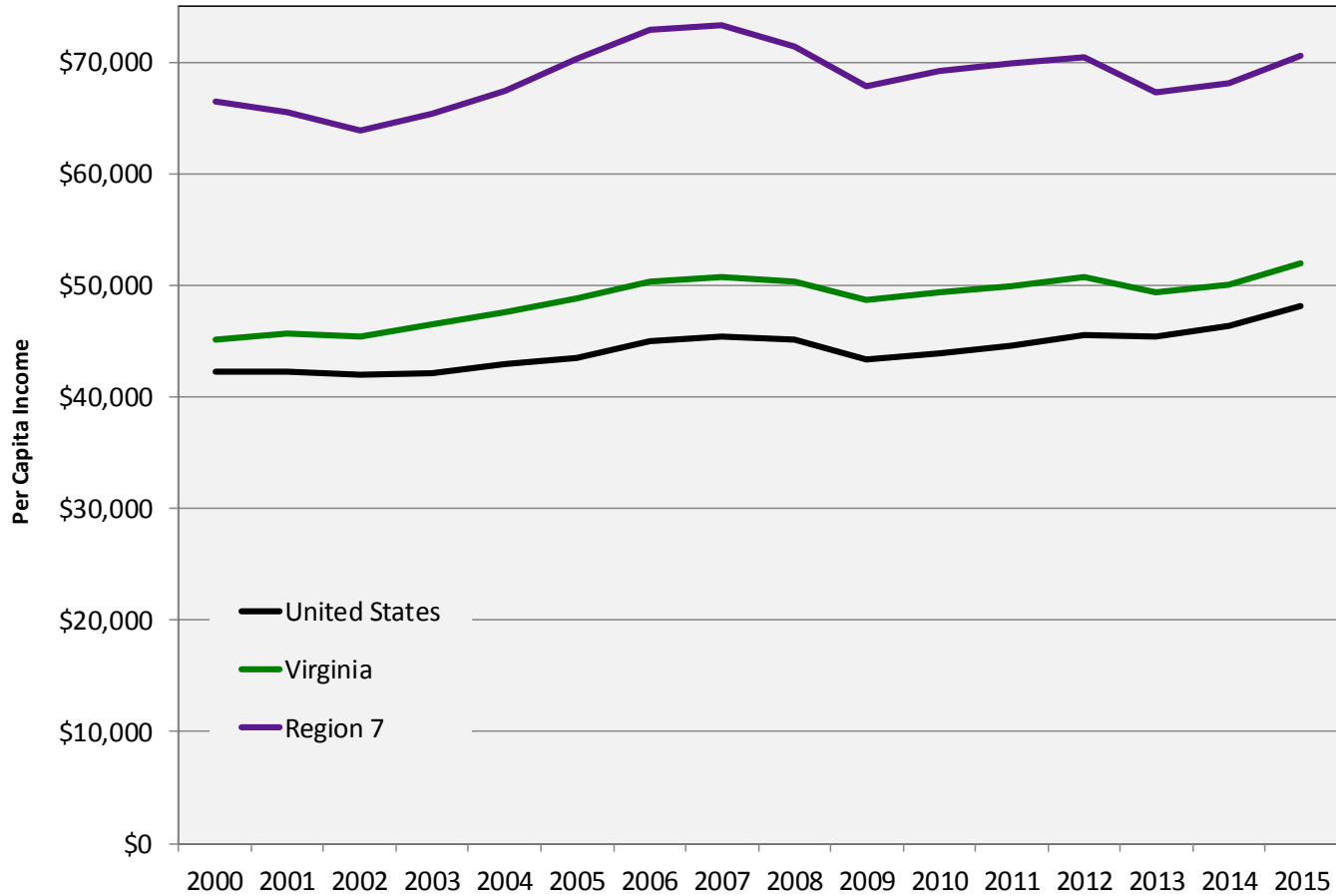
VIRGINIA INITIATIVE FOR
**GROWTH &
OPPORTUNITY**
IN EACH REGION

Income and Wealth



VIRGINIA INITIATIVE FOR
**GROWTH &
OPPORTUNITY**
IN EACH REGION

Per Capita Income



Source: US Bureau of Economic Analysis, PCI adjusted for 2015 dollars



Per Capita Income

Per Capita Income: Region 7

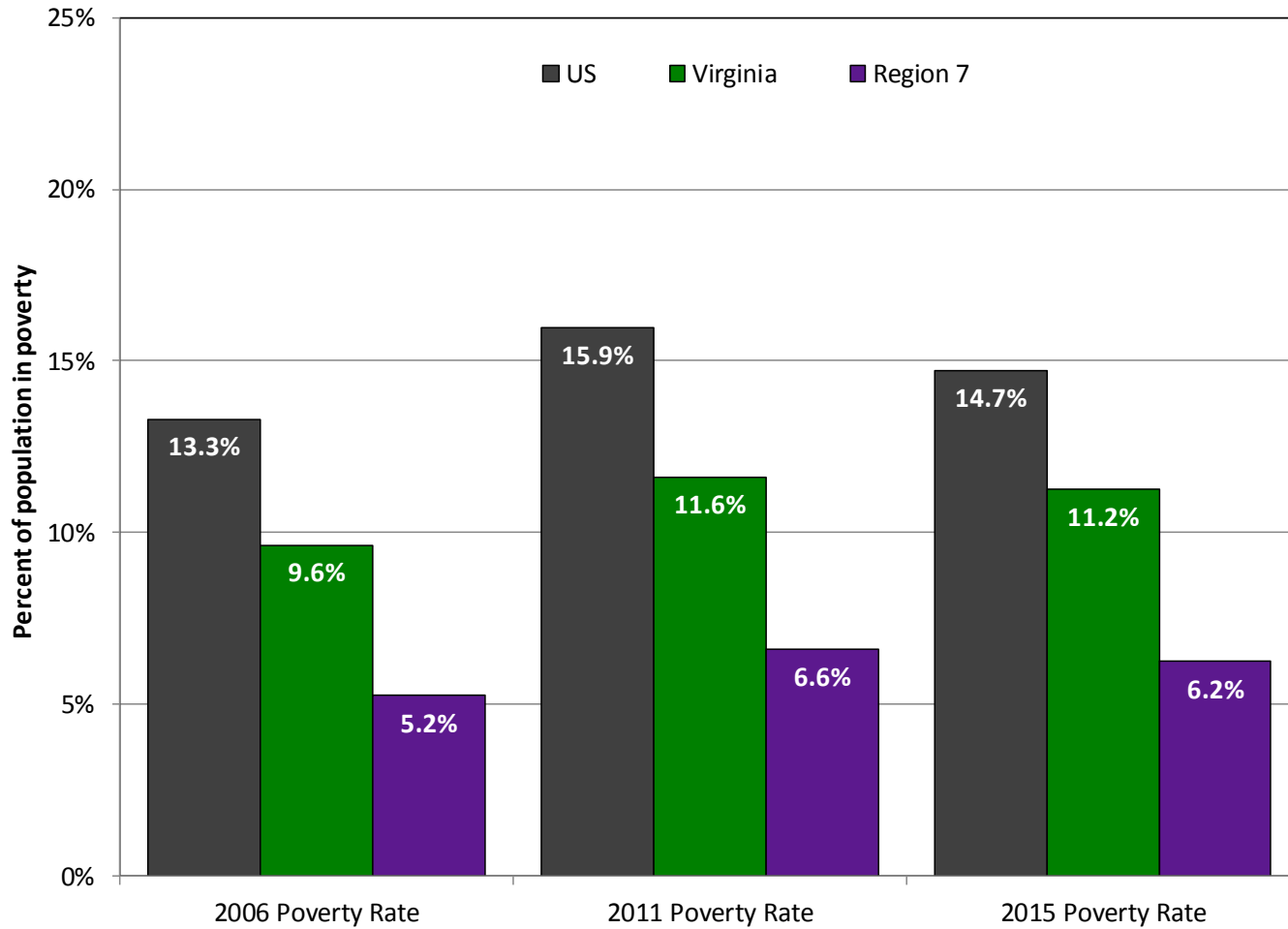
	2000	2010	2015	Annual Growth (00-10)	Annual Growth (10-15)
United States	\$42,231	\$43,902	\$48,112	0.4%	1.5%
Virginia	\$45,144	\$49,421	\$52,052	0.9%	0.9%
Region 7	\$66,533	\$69,164	\$70,571	0.4%	0.3%
Arlington	\$72,736	\$86,356	\$86,161	1.7%	0.0%
Fairfax, Fairfax City + Falls Church, VA*	\$73,532	\$71,897	\$74,923	-0.2%	0.7%
Loudoun	\$58,139	\$68,643	\$69,895	1.7%	0.3%
Prince William, Manassas + Manassas Park, VA*	\$44,459	\$50,753	\$50,315	1.3%	-0.1%
Alexandria city	\$70,507	\$83,007	\$82,683	1.6%	-0.1%

Source: US Bureau of Economic Analysis, PCI adjusted for 2015 dollars



VIRGINIA INITIATIVE FOR
**GROWTH &
OPPORTUNITY**
IN EACH REGION

Percent of Population in Poverty



Source: US Census Bureau, Small Area Income and Poverty Estimates



Percent of Population in Poverty

Poverty Trends: Region 7

	2006 Poverty Rate	2011 Poverty Rate	2015 Poverty Rate
United States	13.3%	15.9%	14.7%
Virginia	9.6%	11.6%	11.2%
Region 7	5.2%	6.6%	6.2%
Arlington	7.0%	7.4%	7.1%
Fairfax	5.2%	6.8%	6.2%
Loudoun	2.9%	4.0%	3.7%
Prince William	5.1%	6.9%	6.7%
Alexandria city	7.2%	8.1%	9.1%
Fairfax city	5.4%	7.3%	7.3%
Falls Church city	3.1%	2.9%	3.4%
Manassas city	7.4%	10.3%	9.6%
Manassas Park city	6.9%	8.0%	7.7%

Source: US Census Bureau, Small Area Income and Poverty Estimates



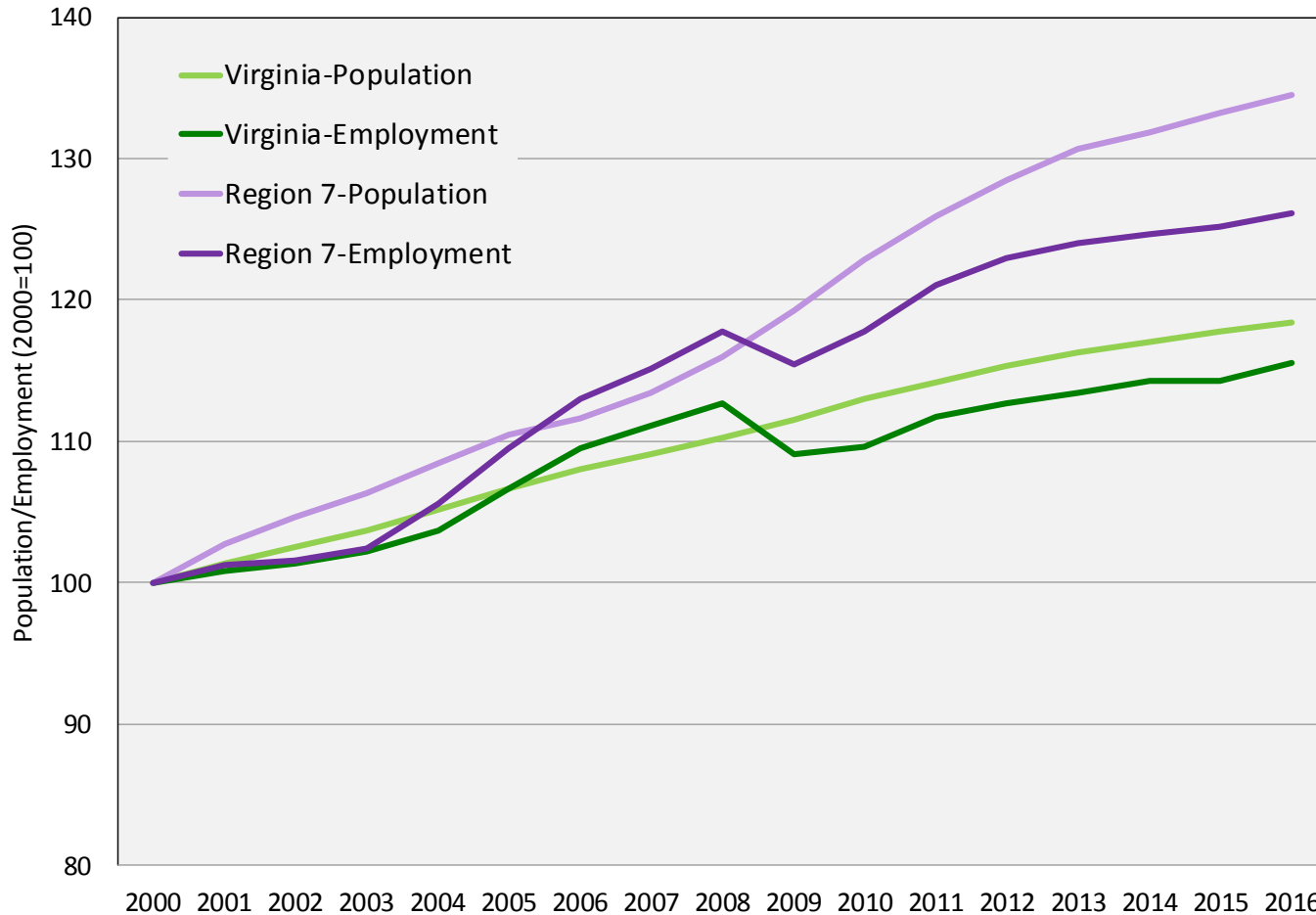
VIRGINIA INITIATIVE FOR
**GROWTH &
OPPORTUNITY**
IN EACH REGION

Employment



VIRGINIA INITIATIVE FOR
**GROWTH &
OPPORTUNITY**
IN EACH REGION

Total Employment



Source: US Census Bureau Population Estimates, US Bureau of Labor Statistics Local Area Unemployment Statistics (2016 preliminary)



Total Employment

Employment Trends: Region 7

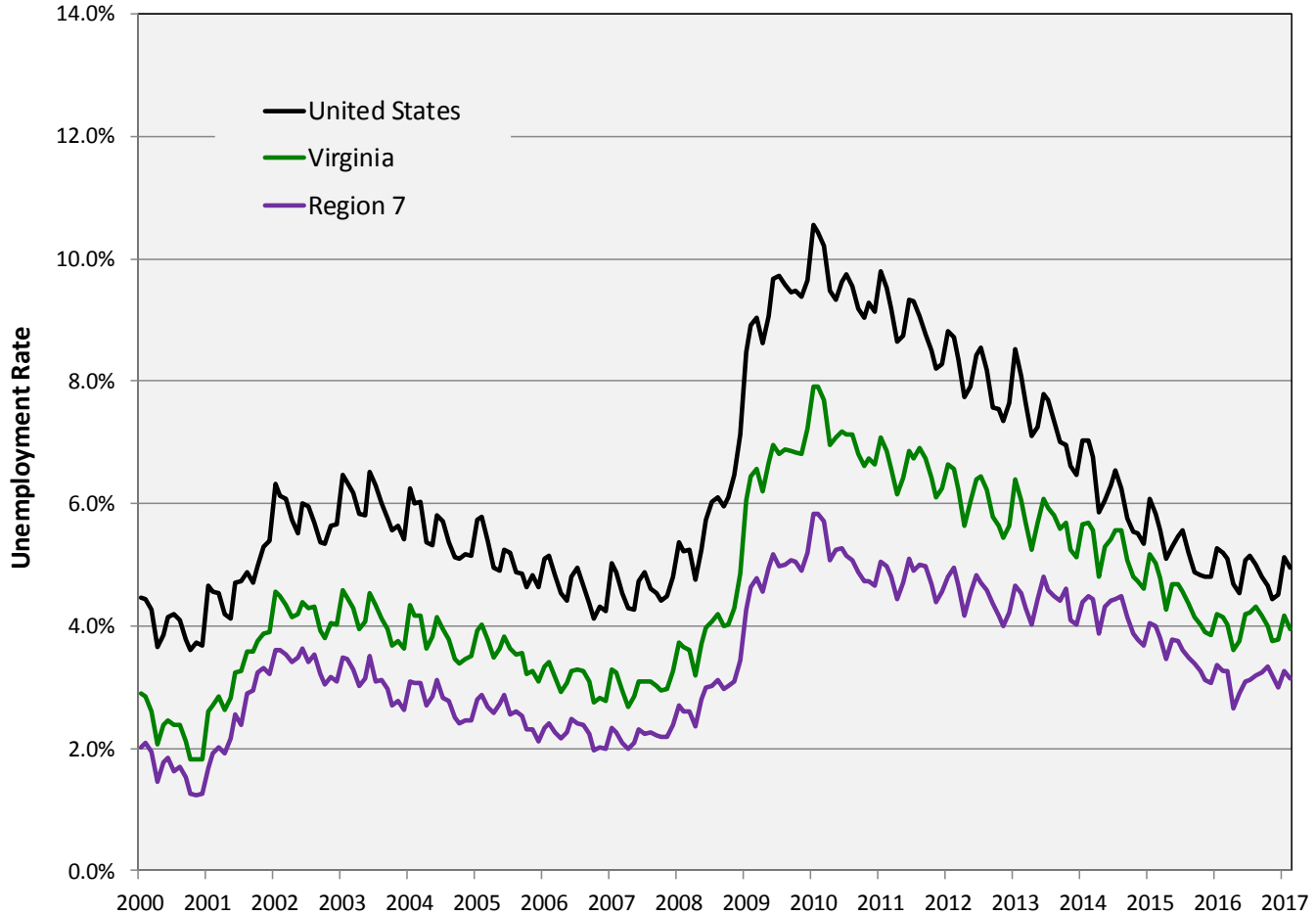
	2000	2010	2016	Annual Growth (00-10)	Annual Growth (10-16)
United States	136,891,000	139,064,000	151,436,000	0.2%	1.4%
Virginia	3,522,865	3,860,386	4,070,260	0.9%	0.9%
Region 7	1,031,194	1,214,760	1,301,155	1.7%	1.2%
Arlington	117,448	131,701	142,150	1.2%	1.3%
Fairfax	541,678	579,498	602,777	0.7%	0.7%
Loudoun	98,642	166,487	190,816	5.4%	2.3%
Prince William	150,881	205,097	224,269	3.1%	1.5%
Alexandria city	79,495	85,915	91,427	0.8%	1.0%
Fairfax city	12,336	11,974	12,880	-0.3%	1.2%
Falls Church city	6,056	7,022	7,616	1.5%	1.4%
Manassas city	18,949	19,503	21,346	0.3%	1.5%
Manassas Park city	5,709	7,563	7,875	2.9%	0.7%

Source: US BLS Local Area Unemployment Statistics (2016 preliminary)



VIRGINIA INITIATIVE FOR
**GROWTH &
OPPORTUNITY**
IN EACH REGION

Unemployment Rate



Source: US Bureau of Labor Statistics, Local Area Unemployment Statistics



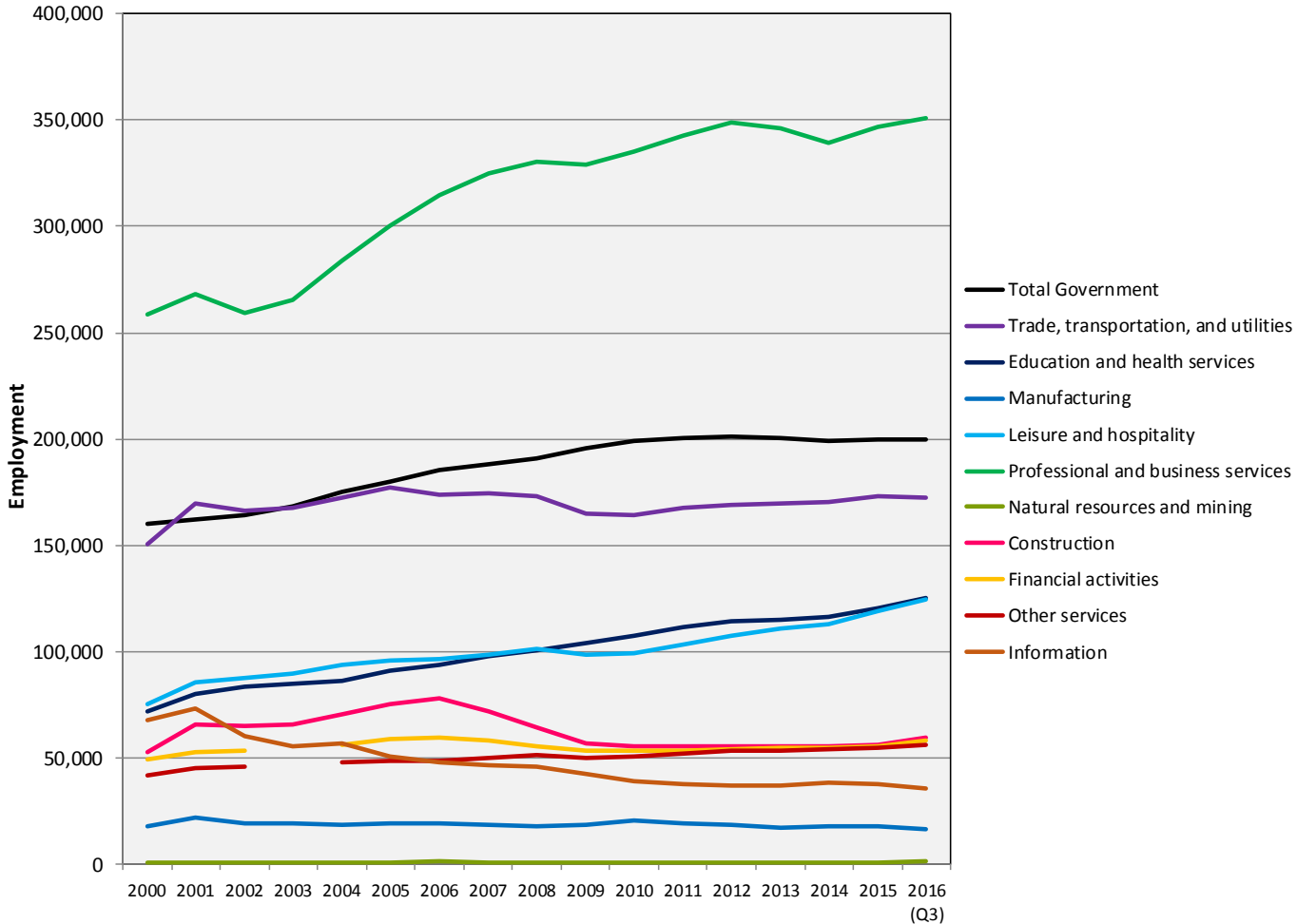
VIRGINIA INITIATIVE FOR
**GROWTH &
OPPORTUNITY**
IN EACH REGION

Industry



VIRGINIA INITIATIVE FOR
**GROWTH &
OPPORTUNITY**
IN EACH REGION

Employment Trends by Industry Sector



Source: US Bureau of Labor Statistics, Quarterly Census of Employment and Wages



Employment Trends by Industry Sector

Region 7: Industry Sectors, 2015*

Sector	Employment#	LQ	Region 7 Avg Wage	US Avg Wage
Professional and business services	346,476	2.08	\$103,401	\$69,270
Trade, transportation, and utilities	173,258	0.76	\$48,052	\$44,321
Education and health services	120,699	0.67	\$52,721	\$47,383
Leisure and hospitality	119,123	0.93	\$24,423	\$21,807
Local government	105,083	0.89	\$56,201	\$47,573
Federal government	79,284	3.38	\$104,292	\$77,900
Construction	55,928	1.02	\$61,298	\$57,009
Financial activities	55,787	0.84	\$102,058	\$87,915
Other services	54,897	1.50	\$56,295	\$35,116
Information	37,654	1.61	\$123,697	\$95,098
Manufacturing	17,933	0.17	\$94,156	\$64,305
State government	15,441	0.40	\$49,944	\$55,878
Natural resources and mining	1,039	0.06	\$54,444	\$58,461

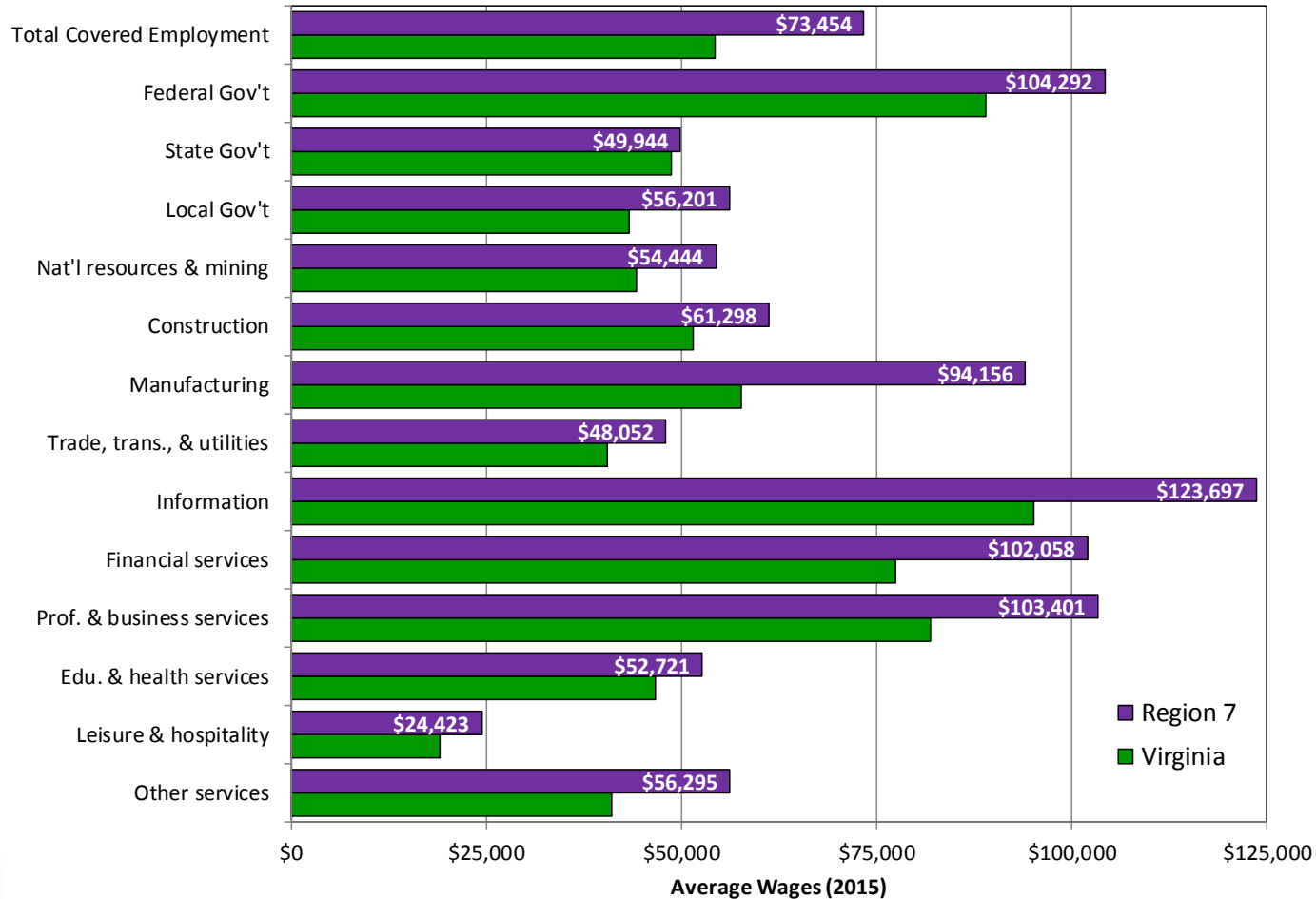
Source: US Bureau of Labor Statistics, Quarterly Census of Employment and Wages

*2015 is the most recently available complete year

#Does not include suppressed employment



Industry Wages by Sector



Source: US Bureau of Labor Statistics, Quarterly Census of Employment and Wages



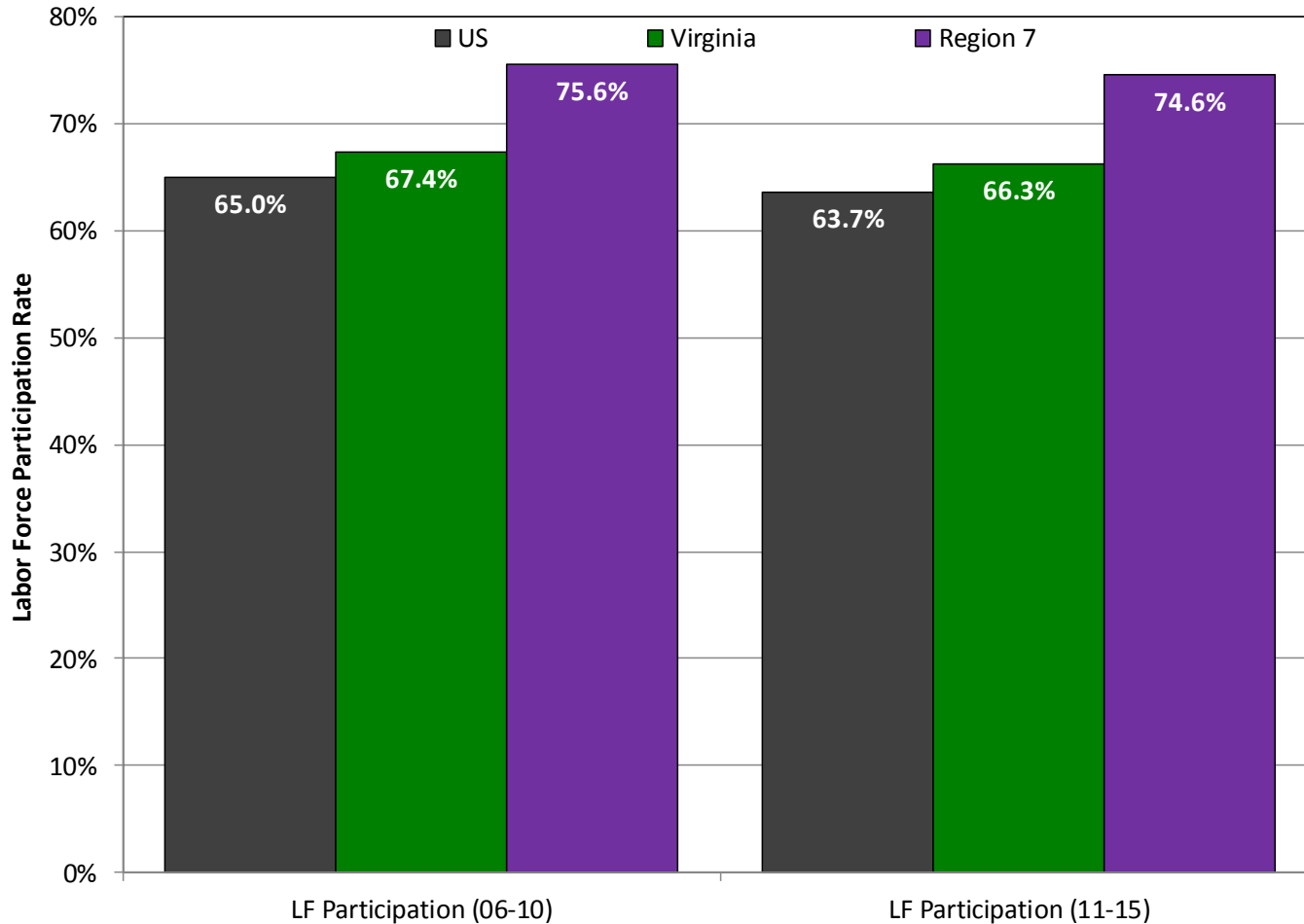
VIRGINIA INITIATIVE FOR
**GROWTH &
OPPORTUNITY**
IN EACH REGION

Labor Force



VIRGINIA INITIATIVE FOR
**GROWTH &
OPPORTUNITY**
IN EACH REGION

Labor Force Participation Rate



Source: US Census Bureau, 2006-2010 and 2011-2015 American Community Surveys



Labor Force Participation Rate

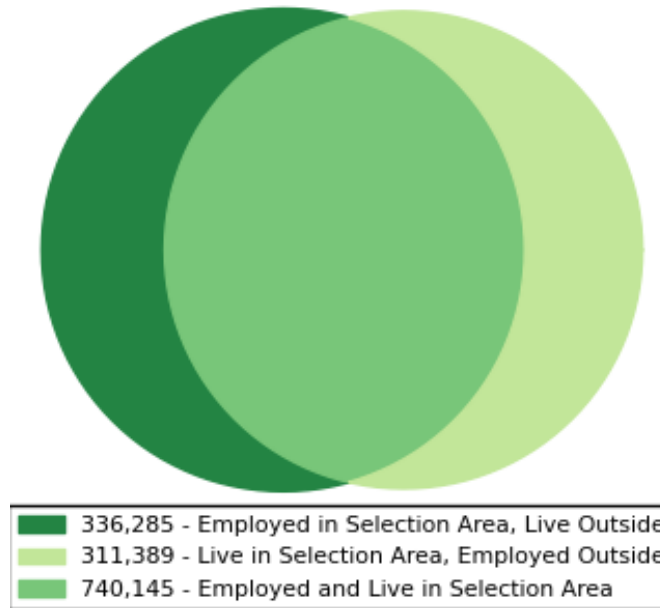
Labor Force Participation Rate: Region 7

	LF Participation (06-10)	LF Participation (11-15)
United States	65.0%	63.7%
Virginia	67.4%	66.3%
Region 7	75.6%	74.6%
Arlington	79.3%	78.6%
Fairfax	73.9%	72.8%
Loudoun	77.5%	76.1%
Prince William	76.2%	74.3%
Alexandria city	78.4%	79.5%
Fairfax city	68.1%	70.6%
Falls Church city	74.1%	76.0%
Manassas city	75.7%	75.6%
Manassas Park city	77.3%	71.8%

Source: US Census Bureau, 2006-2010 and 2011-2015 American Community Surveys

Commuting (Inflow/Outflow)

Inflow/Outflow Job Counts in 2014



Inflow/Outflow Job Counts (Primary Jobs): Region 7

	2014	
	Count	Share
Employed in the Selection Area	1,076,430	100.00%
Employed in the Selection Area but Living Outside	336,285	31.20%
Employed and Living in the Selection Area	740,145	68.80%
Living in the Selection Area	1,051,534	100.00%
Living in the Selection Area but Employed Outside	311,389	29.60%
Living and Employed in the Selection Area	740,145	70.40%

Source: US Census Bureau, Longitudinal Employer-Household Dynamics OnTheMap, 2014



Commuting (Inflow/Outflow)

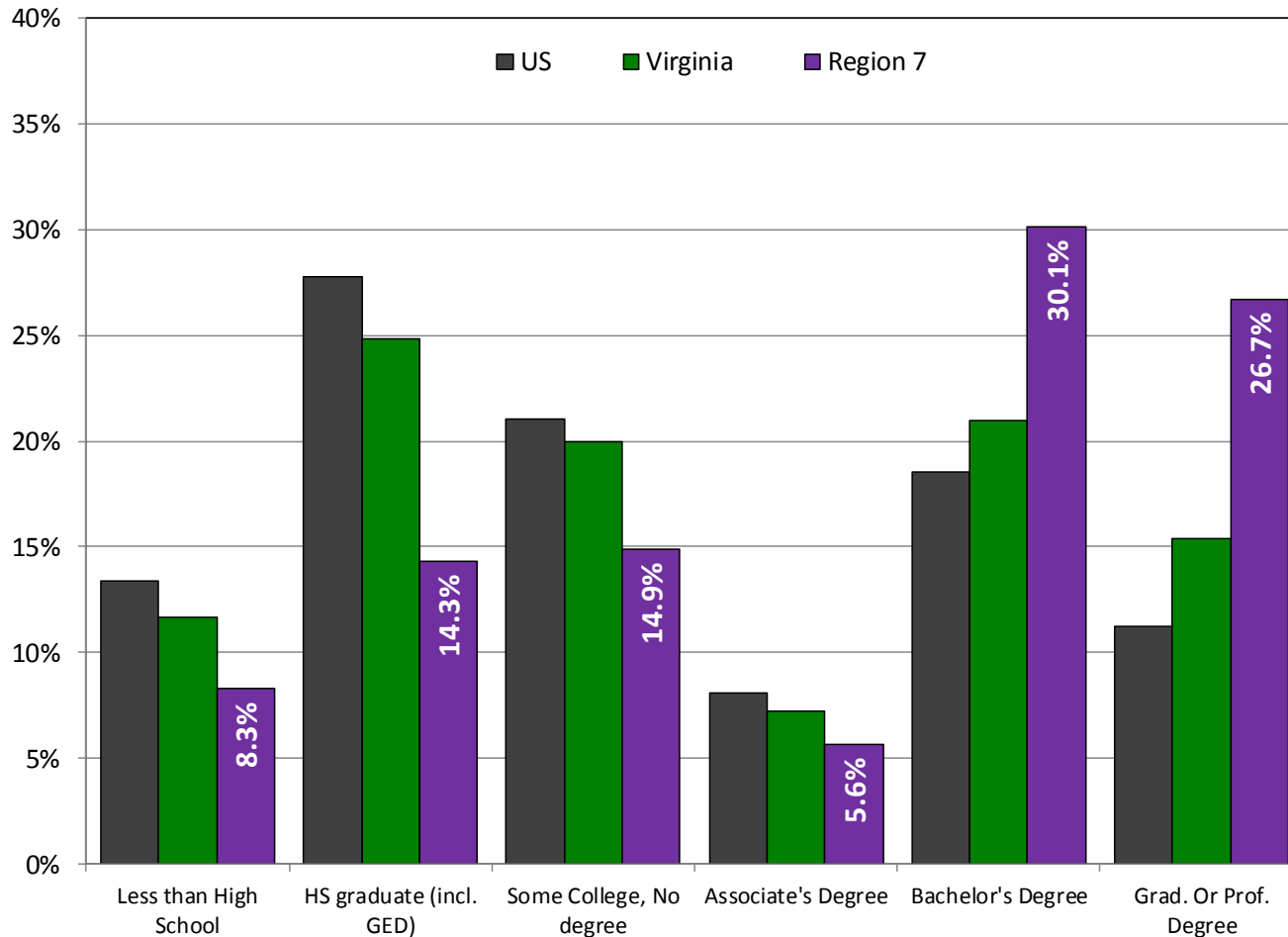
Commuting Patterns: Region 7

	Employed in Selection Area	Employed in the Selection Area but Living Outside		Employed and Living in the Selection Area		Living in the Selection Area	Living in the Selection Area but Employed Outside		Living and Employed in the Selection Area	
Virginia	3,313,939	286,033	8.6%	3,027,906	91.4%	3,377,666	349,760	10.4%	3,027,906	89.6%
Region 7	1,076,430	336,285	31.2%	740,145	68.8%	1,051,534	311,389	29.6%	740,145	70.4%
Arlington	136,014	116,490	85.6%	19,524	14.4%	107,175	87,651	81.8%	19,524	18.2%
Fairfax	554,568	334,799	60.4%	219,769	39.6%	478,537	258,768	54.1%	219,769	45.9%
Loudoun	137,954	86,093	62.4%	51,861	37.6%	173,673	121,812	70.1%	51,861	29.9%
Prince William	107,826	64,347	59.7%	43,479	40.3%	183,760	140,281	76.3%	43,479	23.7%
Alexandria city	84,726	73,593	86.9%	11,133	13.1%	67,727	56,594	83.6%	11,133	16.4%
Fairfax city	21,759	20,837	95.8%	922	4.2%	10,459	9,537	91.2%	922	8.8%
Falls Church city	8,499	8,043	94.6%	456	5.4%	5,699	5,243	92.0%	456	8.0%
Manassas city	21,631	19,184	88.7%	2,447	11.3%	17,864	15,417	86.3%	2,447	13.7%
Manassas Park city	3,453	3,082	89.3%	371	10.7%	6,640	6,269	94.4%	371	5.6%

Source: US Census Bureau, Longitudinal Employer-Household Dynamics OnTheMap, 2014



Educational Attainment



Source: US Census Bureau, 2011-2015 American Community Survey



Educational Attainment

Educational Attainment: Region 7

	2006-2010						2011-2015					
	Less than High School	HS graduate (incl. GED)	Some College, No degree	Associate's Degree	Bachelor's Degree	Grad. Or Prof. Degree	Less than High School	HS graduate (incl. GED)	Some College, No degree	Associate's Degree	Bachelor's Degree	Grad. Or Prof. Degree
United States	14.9%	29.0%	20.6%	7.5%	17.6%	10.3%	13.3%	27.8%	21.1%	8.1%	18.5%	11.2%
Virginia	13.9%	26.0%	19.6%	6.7%	19.9%	13.9%	11.7%	24.8%	19.9%	7.3%	21.0%	15.4%
Region 7	8.7%	15.1%	15.5%	5.4%	30.0%	25.3%	8.3%	14.3%	14.9%	5.6%	30.1%	26.7%
Arlington	7.5%	9.4%	9.2%	3.7%	33.5%	36.7%	6.5%	8.3%	8.7%	3.6%	34.5%	38.4%
Fairfax	8.1%	14.0%	14.6%	5.3%	30.6%	27.4%	8.0%	13.0%	13.7%	5.4%	30.9%	29.0%
Loudoun	6.5%	14.5%	16.0%	5.8%	35.5%	21.6%	6.4%	13.8%	15.4%	6.2%	34.8%	23.4%
Prince William	11.6%	22.2%	21.8%	7.0%	22.8%	14.7%	10.3%	21.7%	21.5%	7.7%	23.2%	15.5%
Alexandria city	9.1%	12.7%	13.7%	4.2%	31.3%	29.1%	8.5%	12.1%	13.9%	4.2%	29.8%	31.5%
Fairfax city	6.9%	15.2%	18.6%	6.1%	29.4%	23.8%	7.6%	15.2%	16.9%	5.5%	31.2%	23.7%
Falls Church city	4.4%	11.3%	10.1%	3.3%	30.3%	40.6%	2.3%	7.5%	8.4%	3.0%	34.4%	44.4%
Manassas city	19.4%	25.2%	21.3%	5.7%	18.6%	9.7%	18.5%	26.0%	19.5%	7.1%	17.6%	11.2%
Manassas Park city	21.5%	31.0%	15.5%	10.0%	12.5%	9.5%	17.7%	26.0%	21.8%	6.2%	18.9%	9.3%

Source: US Census Bureau, 2006-2010 and 2011-2015 American Community Surveys



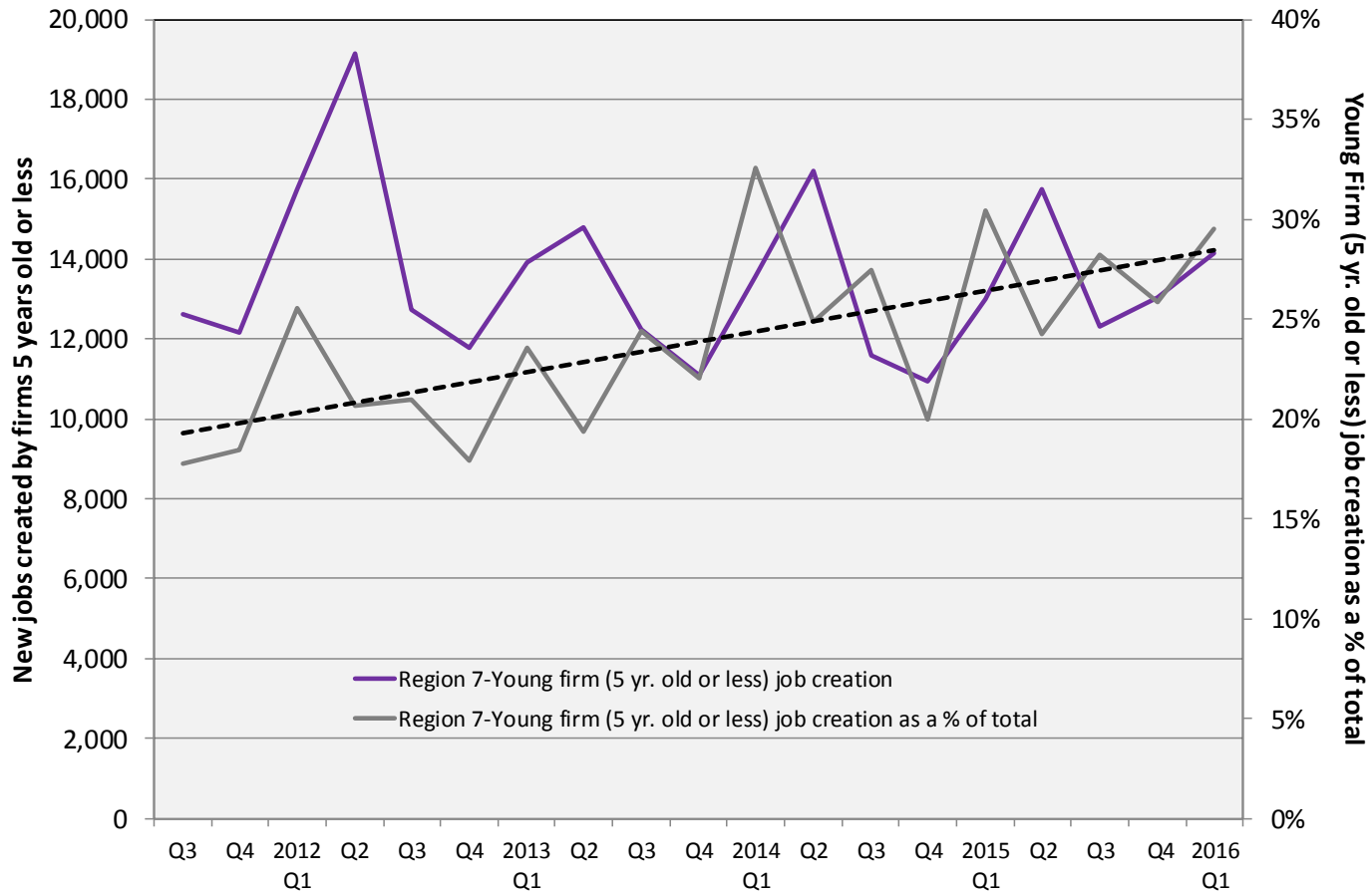
VIRGINIA INITIATIVE FOR
**GROWTH &
OPPORTUNITY**
IN EACH REGION

Firm Growth



VIRGINIA INITIATIVE FOR
**GROWTH &
 OPPORTUNITY**
 IN EACH REGION

Jobs Created by Young Companies (5 years old or less)



Source: US Census Bureau, Longitudinal Employer-Household Dynamics, Quarterly Workforce Indicators



VIRGINIA INITIATIVE FOR
**GROWTH &
 OPPORTUNITY**
 IN EACH REGION

Jobs Created by Young Companies (5 years old or less)

Region 7: Young firm (5 yrs old or less) job creation

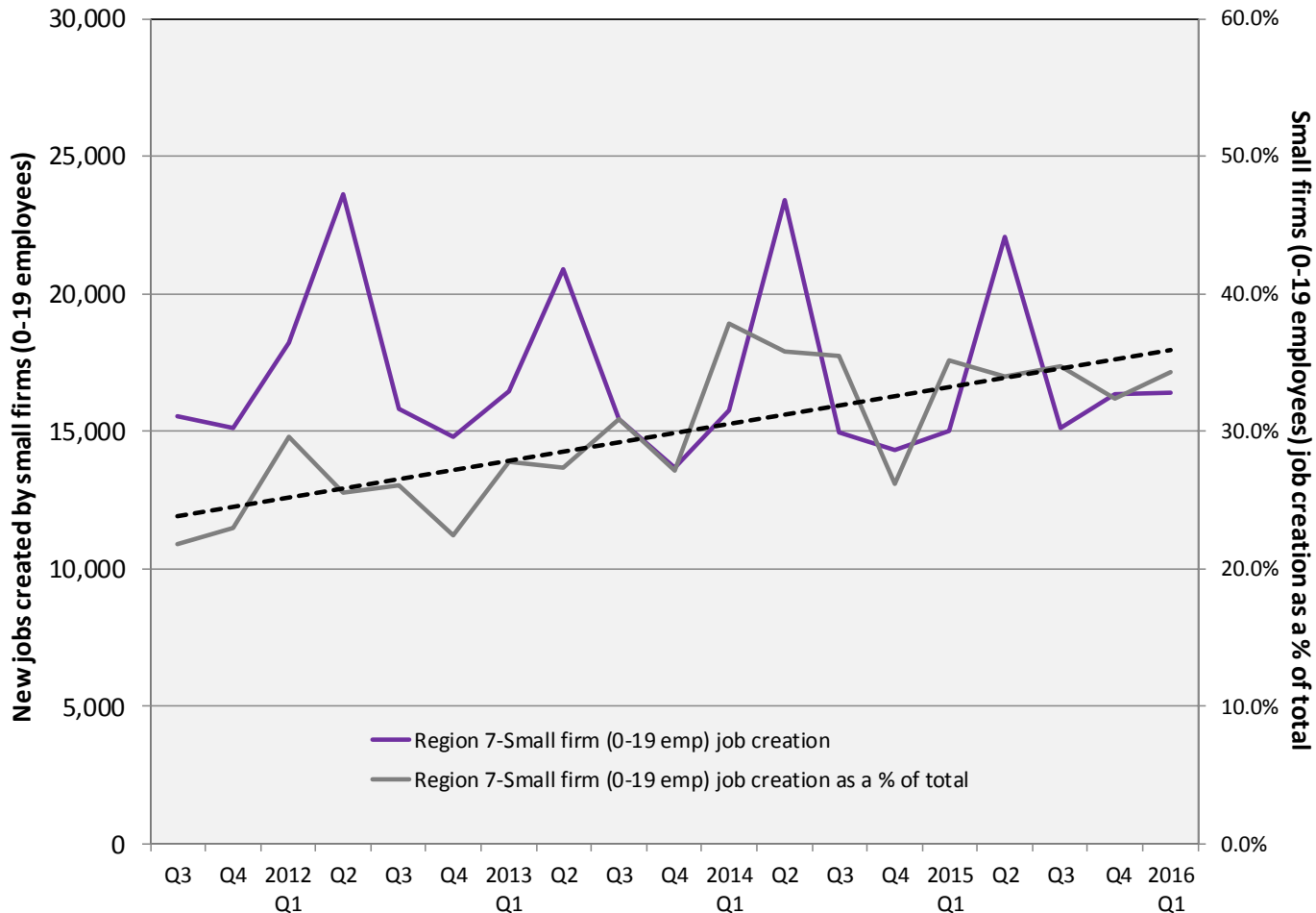
	2012 Average	2015 Average	2012 as a % of Total	2015 as a % of Total
US	1,542,135	1,674,953	25.2%	26.7%
Virginia	42,118	39,288	19.4%	26.2%
Region 7	14,851	13,512	21.2%	26.8%
Arlington	1,606	1,666	20.6%	27.1%
Fairfax	7,126	6,123	19.8%	24.8%
Loudoun	2,542	2,132	24.6%	27.8%
Prince William	1,760	1,713	22.7%	29.6%
Alexandria city	960	980	20.0%	29.2%
Fairfax city	344	347	24.6%	31.9%
Falls Church city	186	176	31.3%	31.4%
Manassas city	272	299	21.4%	32.8%
Manassas Park city	56	75	25.4%	41.6%

Source: US Census Bureau, LEHD, QWI



VIRGINIA INITIATIVE FOR
**GROWTH &
OPPORTUNITY**
IN EACH REGION

Jobs Created by Small Companies (less than 20 employees)



Source: US Census Bureau, Longitudinal Employer-Household Dynamics, Quarterly Workforce Indicators



Jobs Created by Small Companies

(less than 20 employees)

Region 7: Small firm (0-19 Emp.) job creation

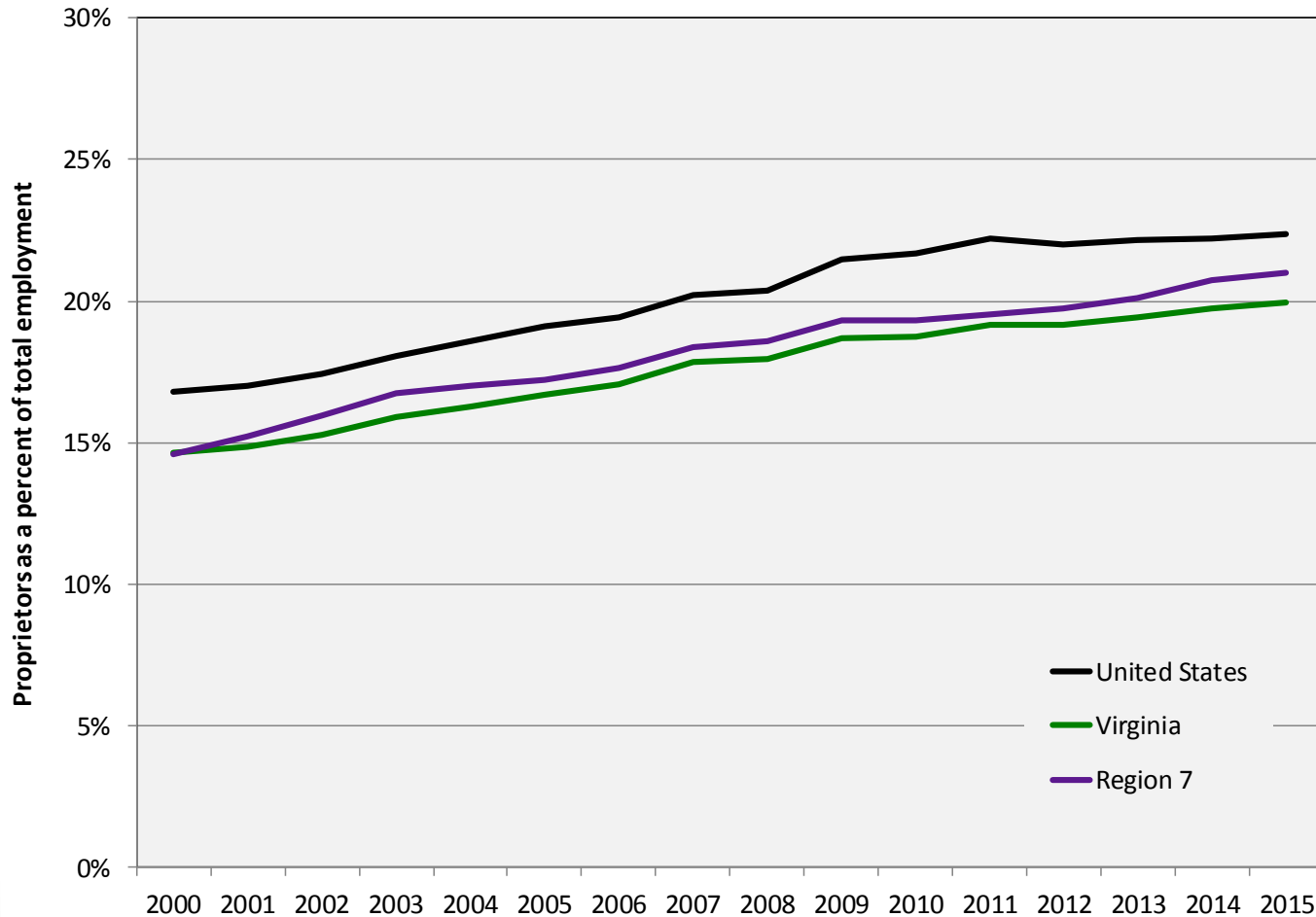
	2012 Average	2015 Average	2012 as a % of Total	2015 as a % of Total
US	2,203,129	2,268,500	36.0%	36.2%
Virginia	58,797	54,683	27.1%	36.4%
Region 6	2,280,032	2,340,321	35.5%	36.2%
Arlington	1,872	1,639	24.0%	26.7%
Fairfax	8,450	8,054	23.5%	32.6%
Loudoun	2,819	2,763	27.3%	36.0%
Prince William	2,310	2,258	29.8%	39.0%
Alexandria city	1,326	1,186	27.6%	35.3%
Fairfax city	543	492	38.9%	45.2%
Falls Church city	272	246	45.7%	43.8%
Manassas city	413	407	32.5%	44.6%
Manassas Park city	105	94	47.5%	52.1%

Source: US Census Bureau, LEHD, QWI



VIRGINIA INITIATIVE FOR
**GROWTH &
OPPORTUNITY**
IN EACH REGION

Sole Proprietorships as a percent of total employment



Source: US Bureau of Economic Analysis



Sole Proprietorships

Proprietors as a percent of total employment: Region 7

	2000 Proprietors	2010 Proprietors	2015 Proprietors	Annual Growth (00-10)	Annual Growth (10-15)	Proprietors as a % of total employment
United States	27,760,800	37,508,700	42,561,400	3.1%	2.1%	22.4%
Virginia	644,573	890,602	1,008,978	3.3%	2.1%	19.9%
Region 7	191,824	297,319	350,228	4.5%	2.8%	21.0%
Alexandria city	11,078	19,658	23,782	5.9%	3.2%	18.8%
Arlington	19,720	27,714	32,531	3.5%	2.7%	14.7%
Fairfax, Fairfax City + Falls Church, VA*	117,649	160,284	182,824	3.1%	2.2%	20.9%
Loudoun	18,049	41,293	51,153	8.6%	3.6%	23.5%
Prince William, Manassas + Manassas Park, VA*	25,328	48,370	59,938	6.7%	3.6%	26.4%

Source: US Bureau of Economic Analysis



VIRGINIA INITIATIVE FOR
**GROWTH &
OPPORTUNITY**
IN EACH REGION

Thank You

Terry L. Clower Ph.D. – tclower@gmu.edu

Mark C. White Ph.D. – mwhite@gmu.edu

Spencer A. Shanholtz – sshanhol@gmu.edu



cra.gmu.edu

[@GMU_CRA](#)